



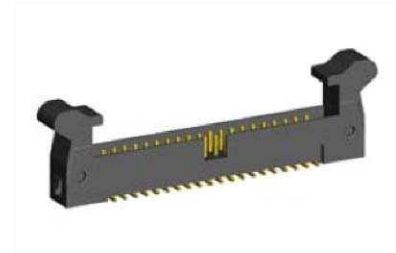
2.0mm Ejector Header SMT Type

MATERIAL

Insulator : Polyester
Contact Pin : Brass

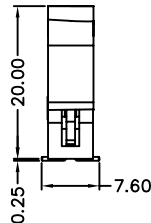
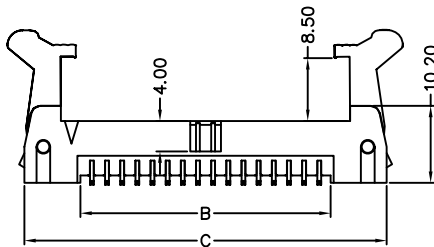
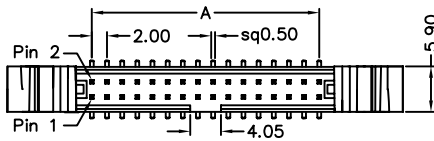
SPECIFICATION

Current Rate : 1 AMP
Insulation Resistance : 1000MΩMin. at DC 500V
Contact Resistance : 10mΩMax. at DC 100mA
Operation Temperature : -40°C to +105°C

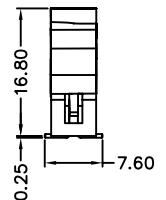
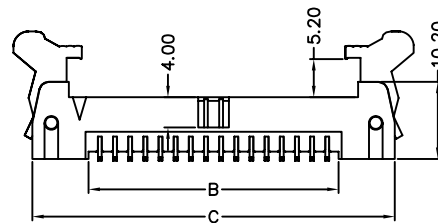
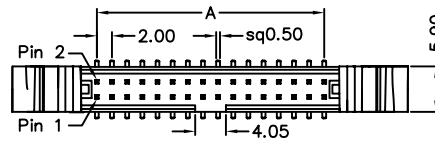


Detail Dimensions

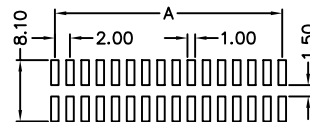
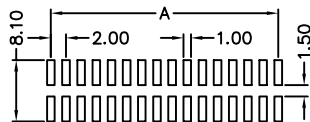
52H-90-xxGB14



52H-90-xxGB24



Recommended P.C.B Layout



Order Information

52H-x 0 - xx G B xx
1 2 3 4

| Standard Parts | Type |
|----------------|---------------|
| 52H-90-xxGB14 | Long Ejector |
| 52H-90-xxGB24 | Short Ejector |

- 7: Green Product
- 9: Green Product High Temp
- No. of contacts
- G: Gold Flash
- T: Tin Plating
- Pinrex internal code

Number Of Contacts

Unit: mm

| Poles | DIM A | DIM B | DIM C | Poles | DIM A | DIM B | DIM C | Poles | DIM A | DIM B | DIM C | | | | |
|-------|-------|-------|-------|-------|-------|-------|-------|-------|-------|-------|-------|--|--|--|--|
| 10 | 8.00 | 10.00 | 25.90 | 26 | 24.00 | 26.00 | 41.90 | 60 | 58.00 | 60.00 | 75.90 | | | | |
| 12 | 10.00 | 12.00 | 27.90 | 30 | 28.00 | 30.00 | 45.90 | | | | | | | | |
| 14 | 12.00 | 14.00 | 29.90 | 32 | 30.00 | 32.00 | 47.90 | | | | | | | | |
| 16 | 14.00 | 16.00 | 31.90 | 34 | 32.00 | 34.00 | 49.90 | | | | | | | | |
| 20 | 18.00 | 20.00 | 35.90 | 40 | 38.00 | 40.00 | 55.90 | | | | | | | | |
| 22 | 20.00 | 22.00 | 37.90 | 44 | 42.00 | 44.00 | 59.90 | | | | | | | | |
| 24 | 22.00 | 24.00 | 39.90 | 50 | 48.00 | 50.00 | 65.90 | | | | | | | | |