



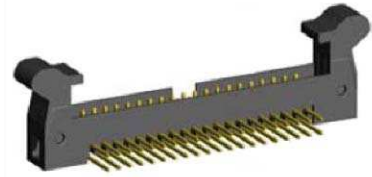
2.0mm Ejector Header Right Angle Type

■ MATERIAL

Insulator : Polyester
Contact Pin : Brass

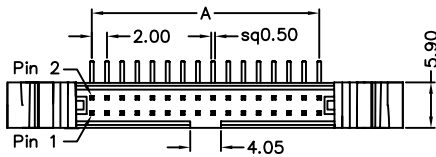
■ SPECIFICATION

Current Rate : 1 AMP
Insulation Resistance : 1000MΩMin. at DC 500V
Contact Resistance : 10mΩMax. at DC 100mA
Operation Temperature : -40°C to +105°C

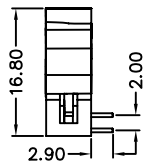
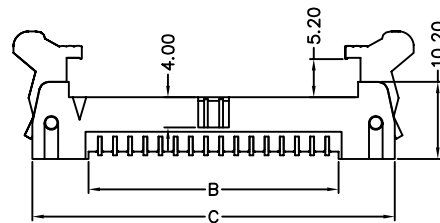
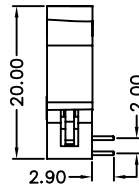
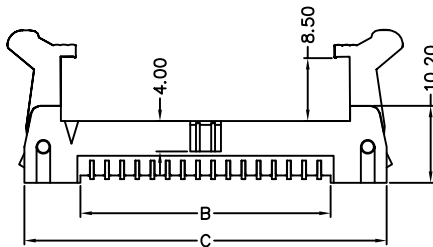
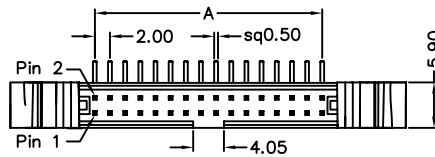


■ Detail Dimensions

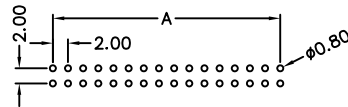
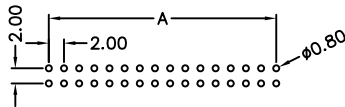
52G-90-xxGB14



52G-90-xxGB24



■ Recommended P.C.B Layout



■ Order Information

52G-x 0 - xx G B xx
1 2 3 4

Standard Parts	Type
52G-90-xxGB14	Long Ejector
52G-90-xxGB24	Short Ejector

- 7: Green Product
- 9: Green Product High Temp
- No. of contacts
- G: Gold Flash
- T: Tin Plating
- Pinrex internal code

■ Number Of Contacts

Unit: mm

Poles	DIM A	DIM B	DIM C	Poles	DIM A	DIM B	DIM C	Poles	DIM A	DIM B	DIM C				
10	8.00	10.00	25.90	26	24.00	26.00	41.90	60	58.00	60.00	75.90				
12	10.00	12.00	27.90	30	28.00	30.00	45.90								
14	12.00	14.00	29.90	32	30.00	32.00	47.90								
16	14.00	16.00	31.90	34	32.00	34.00	49.90								
20	18.00	20.00	35.90	40	38.00	40.00	55.90								
22	20.00	22.00	37.90	44	42.00	44.00	59.90								
24	22.00	24.00	39.90	50	48.00	50.00	65.90								