



2.54mm Female Header SMT Type H=5.0mm

MATERIAL

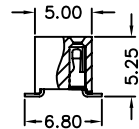
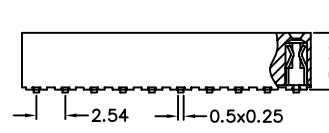
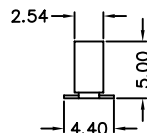
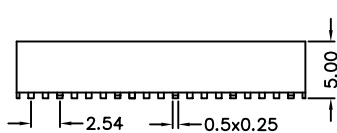
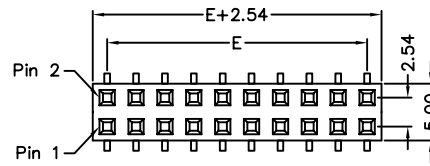
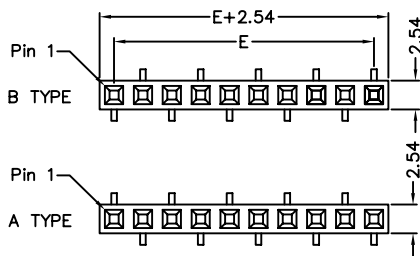
Insulator : High Temperature Polyester
Contact Pin : Phosphor Bronze

SPECIFICATION

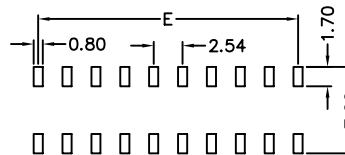
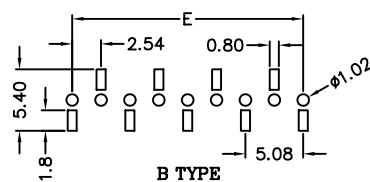
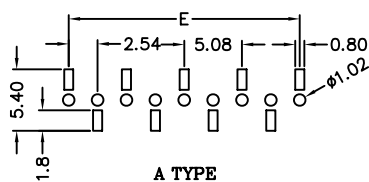
Current Rate : 3 AMP
Insulation Resistance : 5000MΩMin. at DC 500V
Contact Resistance : 20mΩMax. at DC 100mA
Operation Temperature : -40°C to + 105°C



Detail Dimensions



Recommended P.C.B Layout



Order Information

61S-x x - xx G B xx
1 2 3 4 5

- 7: Green Product
- 9: Green Product High Temp
- 1: Single row
- 2: Dual rows
- No. of contacts per row
- Gold Flash
- Selective Gold Plating
- Tin Plating

5. Pinrex internal code

Standard Parts	Type
61S-x1-xxGB00	A Type
61S-x1-xxGB01	B Type
61S-x2-xxGB00	

Number Of Contacts

Unit: mm

Poles	DIM E	Poles	DIM E	Poles	DIM E	Poles	DIM E	Poles	DIM E	Poles	DIM E
		8	17.78	15	35.56	22	53.34	29	71.12	36	88.90
2	2.54	9	20.32	16	38.10	23	55.88	30	73.66	37	91.44
3	5.08	10	22.86	17	40.64	24	58.42	31	76.20	38	93.98
4	7.62	11	25.40	18	43.18	25	60.96	32	78.74	39	96.52
5	10.16	12	27.94	19	45.72	26	63.50	33	81.28	40	99.06
6	12.70	13	30.48	20	48.26	27	66.04	34	83.82		
7	15.24	14	33.02	21	50.80	28	68.58	35	86.36		