



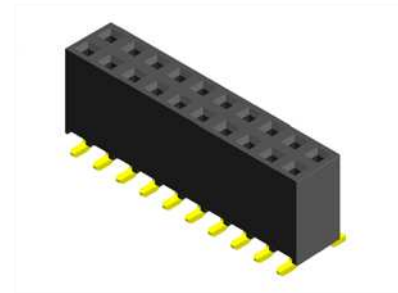
2.0mm Female Header SMT Type H=6.35mm

MATERIAL

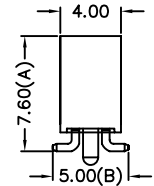
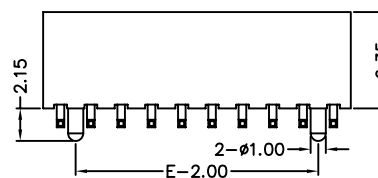
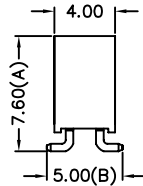
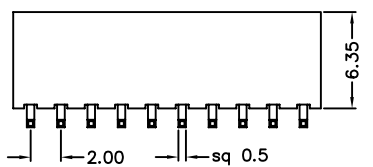
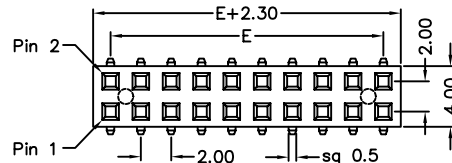
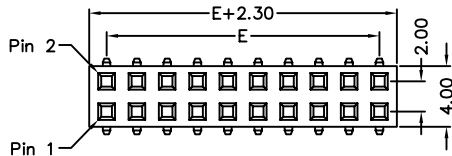
Insulator : High Temperature Polyester
Contact Pin : Phosphor Bronze

SPECIFICATION

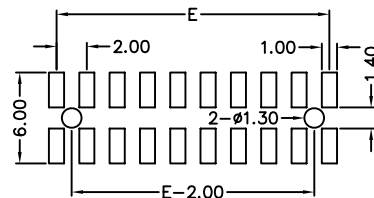
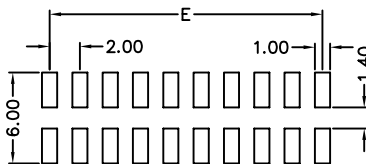
Current Rate : 1 AMP
Insulation Resistance : 5000MΩMin. at DC 500V
Contact Resistance : 20mΩMax. at DC 100mA
Operation Temperature : -40°C to + 105°C



Detail Dimensions



Recommended P.C.B Layout



Order Information

62N-x 2 - xx G B xx
1 2 3 4

- 1. 7: Green Product
9: Green Product High Temp
- 2. No. of contacts per row
- 3. G: Gold Flash
S: Selective Gold Plating
T: Tin Plating
- 4. Pinrex internal code

Standard Parts	Type
62N-x2-xxGB00	w/o posts
62N-x2-xxGB12	with posts

Number Of Contacts

Unit: mm

Poles	DIM E	Poles	DIM E	Poles	DIM E	Poles	DIM E	Poles	DIM E	Poles	DIM E				
		8	14.00	15	28.00	22	42.00	29	56.00	36	70.00				
2	2.00	9	16.00	16	30.00	23	44.00	30	58.00	37	72.00				
3	4.00	10	18.00	17	32.00	24	46.00	31	60.00	38	74.00				
4	6.00	11	20.00	18	34.00	25	48.00	32	62.00	39	76.00				
5	8.00	12	22.00	19	36.00	26	50.00	33	64.00	40	78.00				
6	10.00	13	24.00	20	38.00	27	52.00	34	66.00						
7	12.00	14	26.00	21	40.00	28	54.00	35	68.00						