



1.27x2.54mm Female Header SMT Type H=5.8mm

MATERIAL

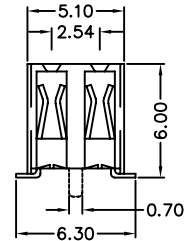
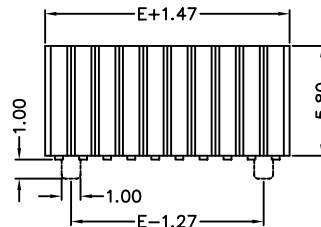
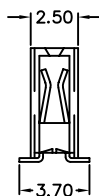
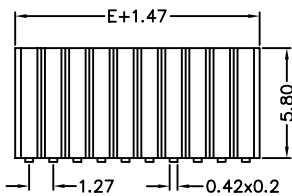
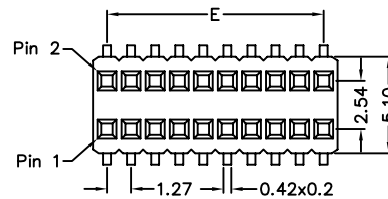
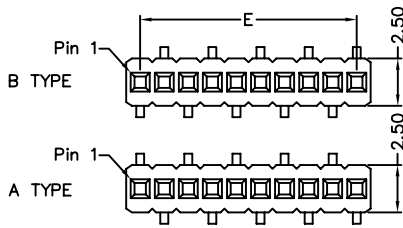
Insulator : High Temperature Polyester
Contact Pin : Phosphor Bronze

SPECIFICATION

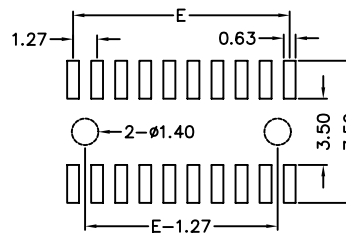
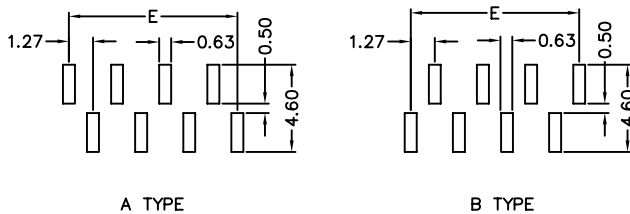
Current Rate : 1 AMP
Insulation Resistance : 5000MΩMin. at DC 500V
Contact Resistance : 20mΩMax. at DC 100mA
Operation Temperature : -40°C to + 105°C



Detail Dimensions



Recommended P.C.B Layout



Order Information

642-x x - xx G B xx
1 2 3 4

- 7: Green Product
9: Green Product High Temp
- 1: Single row
2: Double rows
- No. of contacts per row
- Pinrex internal code

Standard Parts	Type
642-x1-xxGB01	Type B
642-x1-xxGB02	Type A
642-x2-xxGB00	w/o posts
642-x2-xxGB02	with posts

Number Of Contacts

Unit: mm

Poles	DIM E	Poles	DIM E	Poles	DIM E	Poles	DIM E	Poles	DIM E	Poles	DIM E
		8	8.89	15	17.78	22	26.67	29	35.56	36	44.45
		9	10.16	16	19.05	23	27.94	30	36.83	37	45.72
3	2.54	10	11.43	17	20.32	24	29.21	31	38.10	38	46.99
4	3.81	11	12.70	18	21.59	25	30.48	32	39.37	39	48.26
5	5.08	12	13.97	19	22.86	26	31.75	33	40.64	40	49.53
6	6.35	13	15.24	20	24.13	27	33.02	34	41.91		
7	7.62	14	16.51	21	25.40	28	34.29	35	43.18		