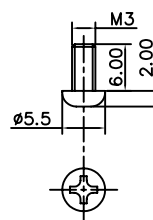
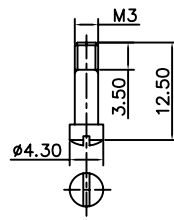
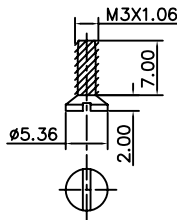
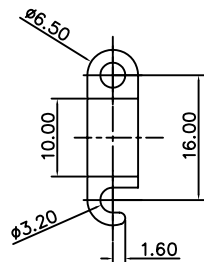
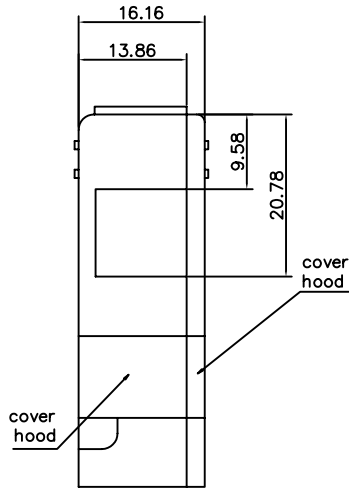
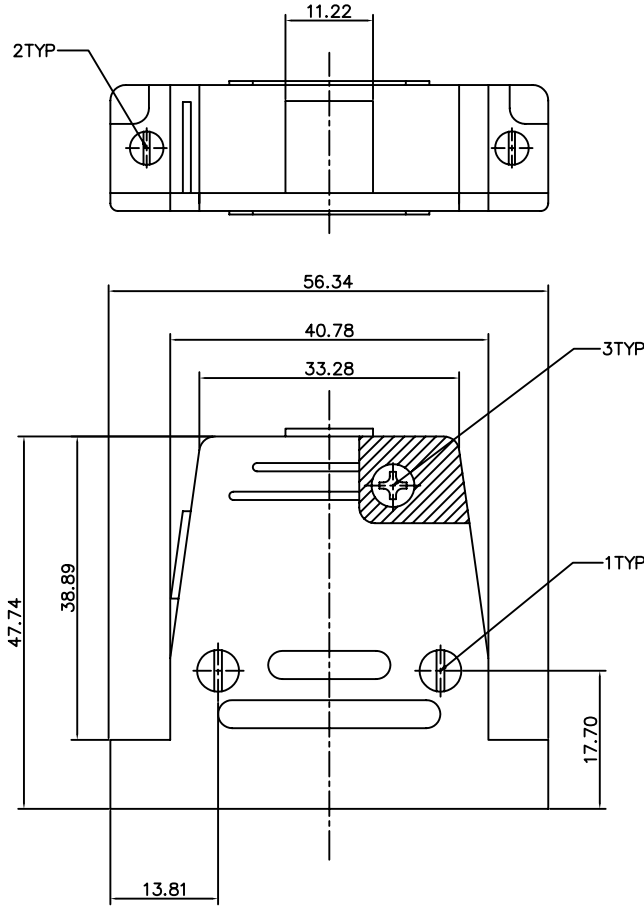


This document is the property of Amphenol Corporation and is delivered on the express condition that it is not to be disclosed, reproduced or used, in whole or in part, for manufacture or sale by anyone other than Amphenol Corporation without its prior consent, & that no right is granted to disclose or to use any information in this document.



1

2

3

| REVISIONS | | | | |
|-----------|-----|-------------|----------|----------|
| SYM | ECN | DESCRIPTION | DATE | APPROVED |
| A | | | 07/03/07 | |

D-SUB TECHNICAL DATA

Hood, plastic, For 25 positions D-SUB connectors
 MATERIAL :plastic
 CLIMATIC : Temperature range -30 °C up to 90°C
 MARKING : Amphenol-...(Series No.)
 Commercial reference
 Manufacturing date

PRODUCT CODE

ROHS L 17158906

| | | |
|---|--|-------------------------|
| UNLESS OTHERWISE SPECIFIED TOLERANCES U.S. METRIC .X +/- 0.50 .XX +/- 0.30 .XXX +/- 0.20 FRACTIONS +/- ANGLES +/- 2° FOR MATERIALS AND FINISHES SEE NOTES REMOVE SHARP EDGES DIMENSIONS U.S. INCHES METRIC MM | APPROVAL DRAWN Helen Jiang 07/03/07 CHECKED Mk.wang 07/03/07 CHECKED | DATE 07/03/07 |
| | DRAWING FILE : | |
| | ANGLE OF PROJECTION | |
| | SIZE DRAWING NO. A4 C L17158906 | |

| | | |
|----------------------|------------------------|------------------|
| Amphenol | | |
| TITLE hood | | |
| SCALE NONE | SHEET 1 OF 1 | REV. A |