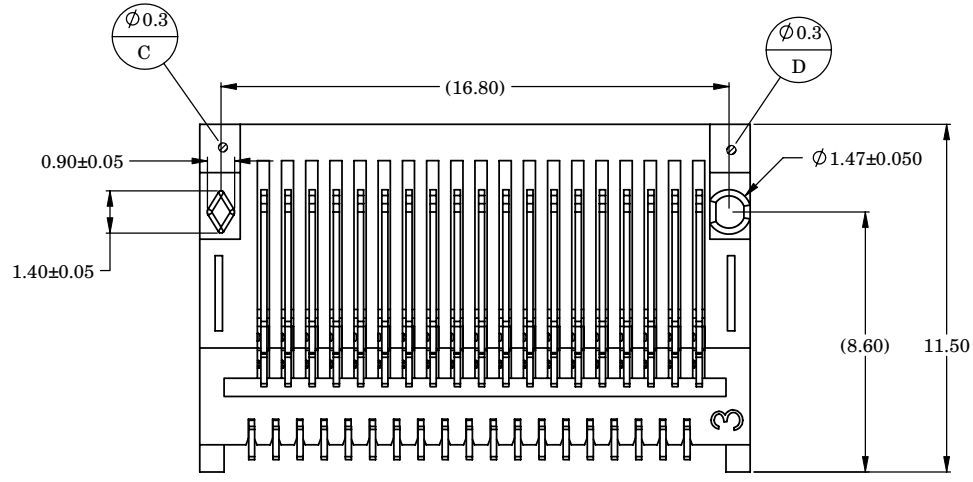
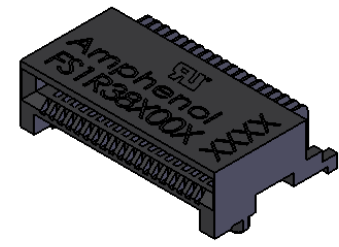
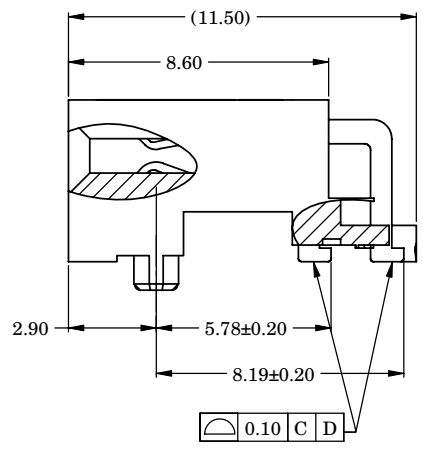
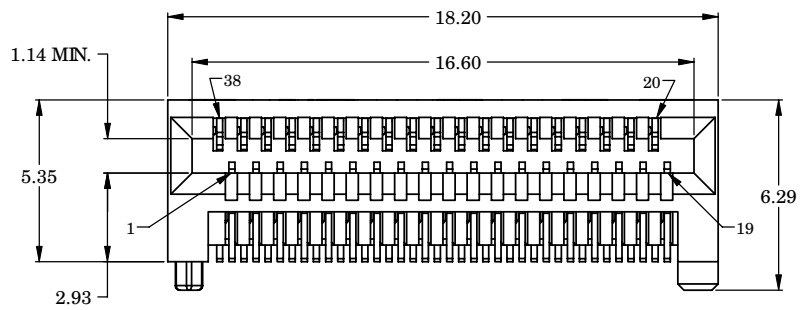
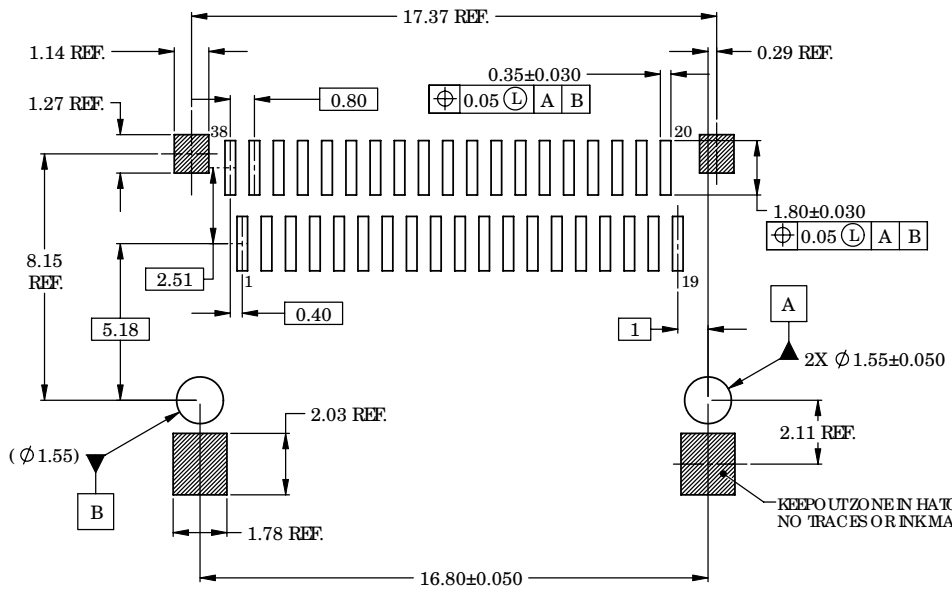


REVISIONS			
REV	REN	DESCRIPTION	DATE APPROVED
F		MATING END POSITION ADDED	APR 20 06 22
G		PN LABEL ADDED	APR 06 06 22
H		CORRECTION TO HOUSING CONFIGURATION DISPLAYED	APR 06 06 22



PART NUMBER	PACKAGING	CONTACT PLATING
FS1-R38-2000	TAPE AND REEL	30µ" GOLD OVER 50µ" NICKEL IN CONTACT AREAS 100µ" MATTE TIN OVER 50µ" NICKEL IN SOLDER AREAS
FS1-R38-3000		15µ" GOLD OVER 50µ" NICKEL IN CONTACT AREAS 100µ" MATTE TIN OVER 50µ" NICKEL IN SOLDER AREAS



NOTES:

- MATERIAL
HOUSING: SOLDER REFLOW PROCESS COMPATIBLE LCP, UL94V-0
CONTACTS: PHOSPHOR BRONZE
- ROHS COMPLIANT
- PERFORMANCE
ELECTRICAL: 0.5 AMPS MAX PER CONTACT
MECHANICAL: 250 MATING CYCLES MINIMUM
- COMPLIES WITH SFF 8436.

KEEP OUT ZONE IN HATCHED AREAS
NO TRACES OR INK MARKING ALLOWED

DO NOT SCALE DRAWING

RECOMMENDED PCB LAYOUT

THIS DOCUMENT CONTAINS PROPRIETARY INFORMATION AND SUCH INFORMATION MAY NOT BE DISCLOSED TO OTHERS FOR ANY PURPOSE OR USED FOR MANUFACTURING PURPOSES WITHOUT PERMISSION FROM AMPHENOL CANADA CORP.

UNLESS OTHERWISE SPECIFIED, DIMENSIONS ARE IN MILLIMETERS		APPROVALS	DATE	Amphenol Canada Corp.	
DRAWN	YK	21/APR/06		TITLE	
DRAWN	YK	21/APR/06		38 POSITION RIGHT ANGLE HIGH SPEED CONNECTOR	
DWG. NO.	EAR 12923	SCALE	NTS	DRAWN BY	P-FS1-R38-X000
REVISION NO.	03554	DWG. APP'D		REV.	H
				SCALE	1 OF 1