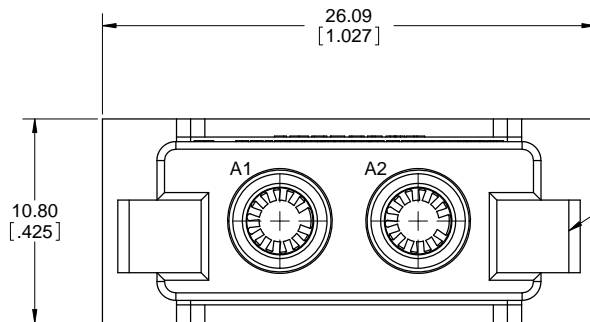
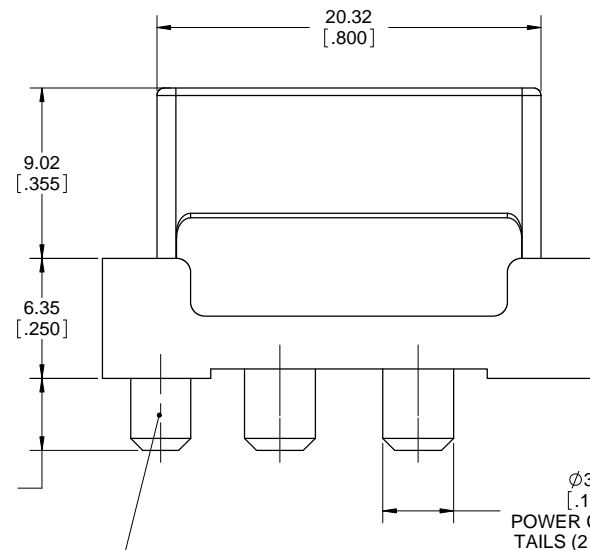




| REVISIONS | | | |
|-----------|---------------------------------|----------|-------|
| REV | DESCRIPTION, ECN, EAR NO. | DATE | APP'D |
| A | PROPOSAL DWG (EAR 13803) | NOV18/10 | |
| B | UPDATE (EAR 13812) | DEC03/10 | |
| C | UPDATE WITH FINAL DESIGN | JAN13/11 | |
| D | SPEC UPDATE (EAR 13936) | AUG23/11 | S.M |
| E | TOLERANCES ADDED | FEB1/12 | S.M |
| F | UL FILE NUMBER ADDED | MAR26/12 | S.M |
| G | UPDATED WITH MACHINED CB HOLDER | DEC06/12 | S.M |
| H | UPDATE TO MATING CONNECTORS | MAY31/13 | S.M |
| J | UPDATE TO MATING CONNECTORS | AUG29/13 | S.M |

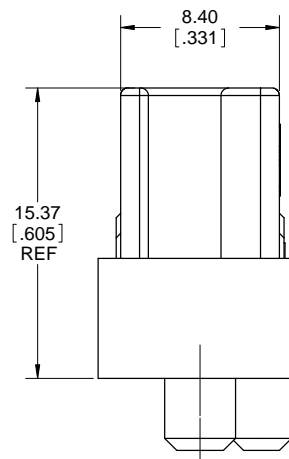


SLOT ACCEPTS PIN CONNECTOR HOUSING BLADE LOCATED OFF CENTER TO PREVENT IMPROPER MATING

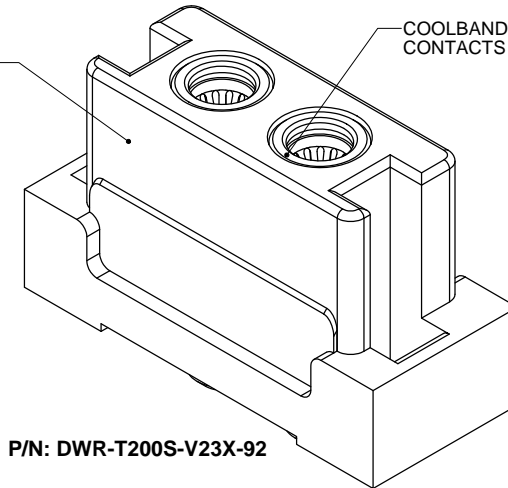


ORIENTATION PEG PREVENTS ASSEMBLY ERRORS

POWER CONTACT TAILS (2 PLACES)



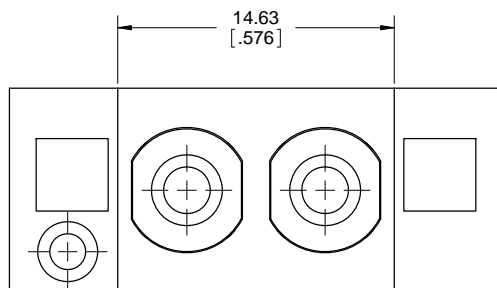
SOCKET HOUSING



P/N: DWR-T200S-V23X-92

NOTES:

- MATERIALS: ALL MATERIALS ARE RoHS COMPLIANT PER EU DIRECTIVE 2011/65/EU AND AMENDMENTS.
 - HOUSING: HIGH TEMPERATURE RESISTANT NYLON, UL FLAMMABILITY RATING 94V-0, COLOUR BLACK
 - POWER CONTACTS: BERYLLIUM COPPER COOLBAND MATING GRID, TELLURIUM COPPER ALLOY BALANCE.
- PLATING:
 - FOR P/N DWR-T200S-V233-92, MATING GRID PLATED WITH 0.76µm (30µ") GOLD OVER 1.27µm (50µ") NICKEL, 2.54µm (100µ") MATTE TIN BALANCE.
 - FOR P/N DWR-T200S-V236-92, MATING GRID PLATED WITH 5.08µm (200µ") SILVER OVER 1.27µm (50µ") NICKEL, SILVER OVER NICKEL BALANCE.
- WHEN MATING WITH PIN CONNECTOR (SEE TABLE 1 ON SHEET 2), THE INSERTION FORCE REQUIRED WILL BE 5 KG MAX. THE WITHDRAWAL FORCE REQUIRED FOR SEPARATION WILL BE 0.7 KG MIN, 3 KG MAX. THE ORDER OF MECHANICAL AND ELECTRICAL ENGAGEMENT IS A) HOUSING BLADES, B) HOUSING SHROUD AND C) POWER CONTACTS
- ELECTRICAL CHARACTERISTICS
 - CURRENT RATING: 40A PER CONTACT
 - OPERATING TEMPERATURE: -55°C TO +105°C
 - DIELECTRIC WITHSTANDING VOLTAGE: 1500VDC
 - INSULATION RESISTANCE: 5000 MEGAOHMS
- UL FILE NUMBER: E64911



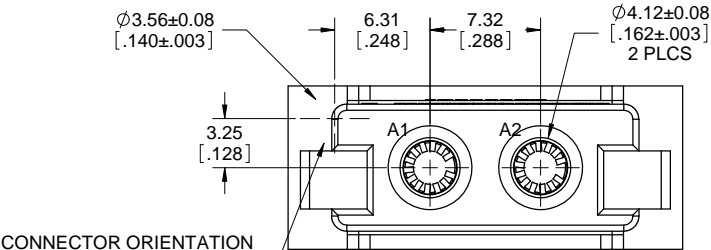
| | | | |
|----------------------------|------------------------|-----------|----------|
| UNLESS SPECIFIED OTHERWISE | DRAWN | S.CAELERS | NOV18/10 |
| PRIMARY UNITS MILLIMETERS | CHECKED | | |
| SECONDARY INCHES | M.E. APP'D | | |
| REFERENCE IN PARENTHESES | Q.A. APP'D | | |
| GENERAL TOLERANCES | DWG APPR. | | |
| 1 DECIMAL PLACE | ENG. REL. NO. | EAR 13803 | |
| 2 DECIMAL PLACES ±0.100 | REF. | | |
| 3 DECIMAL PLACES | THIRD ANGLE PROJECTION | | |
| ANGULAR DEGREES | DO NOT SCALE DRAWING | | |

Amphenol Canada Corp.

DWR SERIES SLIM DRAWER, 2 POWER SOCKET CONNECTOR, SIZE 10 COOL POWER, SPECIAL .288" PITCH, PCB TAILS, RoHS COMPLIANT

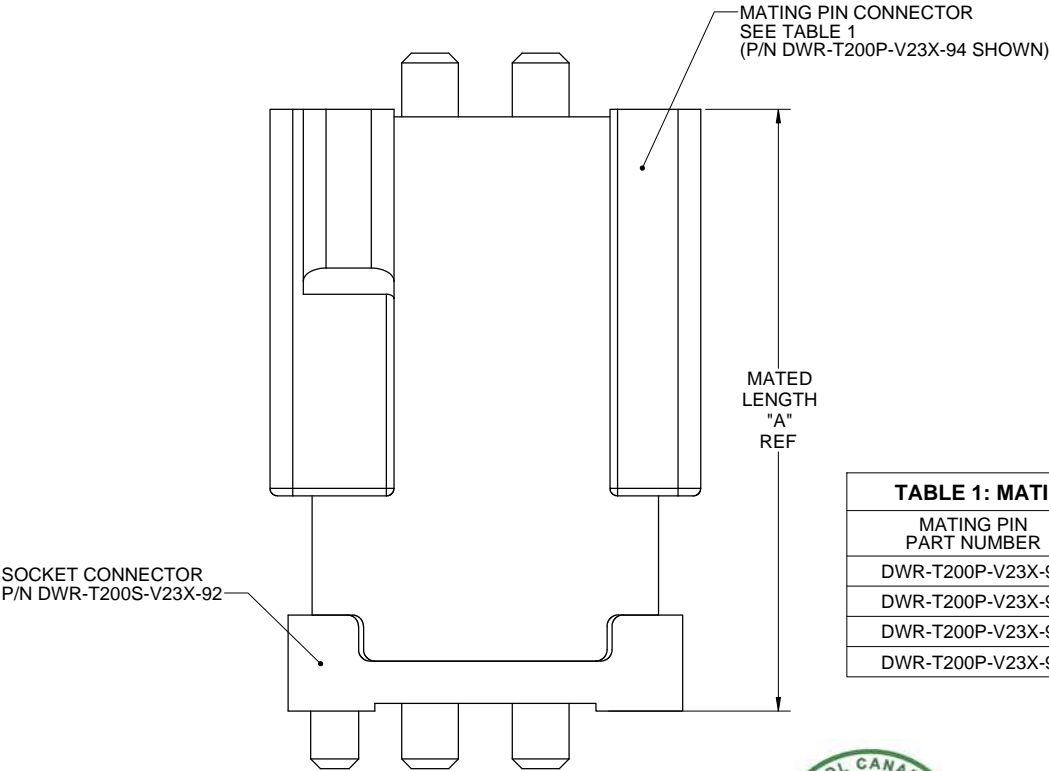
P-DWR-T200S-V23X-92

| REVISIONS | | | |
|-----------|---------------------------------|----------|-------|
| REV | DESCRIPTION, ECN, EAR NO. | DATE | APP'D |
| A | PROPOSAL DWG (EAR 13803) | NOV18/10 | |
| B | UPDATE (EAR 13812) | DEC03/10 | |
| C | UPDATE WITH FINAL DESIGN | JAN13/11 | |
| D | SPEC UPDATE (EAR 13936) | AUG23/11 | S.M |
| E | TOLERANCES ADDED | FEB1/12 | S.M |
| F | UL FILE NUMBER ADDED | MAR26/12 | S.M |
| G | UPDATED WITH MACHINED CB HOLDER | DEC06/12 | S.M |
| H | UPDATE TO MATING CONNECTORS | MAY31/13 | S.M |
| J | UPDATE TO MATING CONNECTORS | AUG29/13 | S.M |

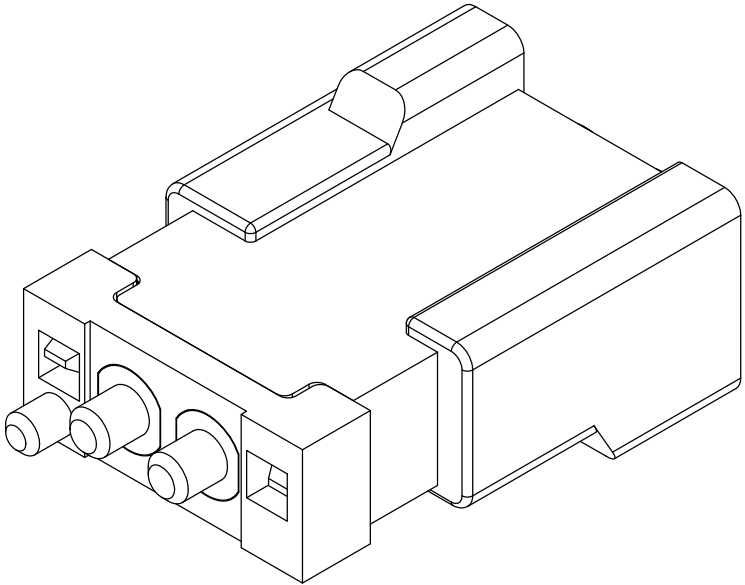


LOCATE HOLES
 $\phi 0.13$ [.005] DIA
POSITION DIMENSIONS
ARE BASIC

RECOMMENDED PCB LAYOUT
(COMPONENT SIDE OF BOARD)
SCALE 4:1



| TABLE 1: MATING PIN CONNECTORS | |
|--------------------------------|----------------------|
| MATING PIN PART NUMBER | MATED LENGTH "A" REF |
| DWR-T200P-V23X-93 | 39.80 [1.567] |
| DWR-T200P-V23X-94 | 39.80 [1.567] |
| DWR-T200P-V23X-95 | 42.00 [1.654] |
| DWR-T200P-V23X-96 | 38.00 [1.496] |



MATED ASSEMBLY
SIDE VIEW
SCALE 4:1



| | | | |
|------------------------------|------------------------|-----------|----------|
| UNLESS SPECIFIED OTHERWISE | DRAWN | S.CAELERS | NOV18/10 |
| PRIMARY UNITS MILLIMETERS | CHECKED | | |
| SECONDARY INCHES | M.E. APP'D | | |
| REFERENCE IN PARENTHESES | Q.A. APP'D | | |
| GENERAL TOLERANCES | DWG APPR. | | |
| 1 DECIMAL PLACE | ENG. REL. NO. | EAR 13803 | |
| 2 DECIMAL PLACES ± 0.100 | REF. | | |
| 3 DECIMAL PLACES | THIRD ANGLE PROJECTION | | |
| ANGULAR DEGREES | | | |

Amphenol Canada Corp.

DWR SERIES SLIM DRAWER, 2 POWER
SOCKET CONNECTOR, SIZE 10 COOL
POWER, SPECIAL .288" PITCH,
PCB TAILS, ROHS COMPLIANT

P-DWR-T200S-V23X-92

| | |
|-------------------|--------------|
| DWG. NO. | REV |
| | J |
| CODE ID NO. 03554 | DWG SIZE: X |
| SCALE: 5:1 | SHEET 2 OF 2 |