

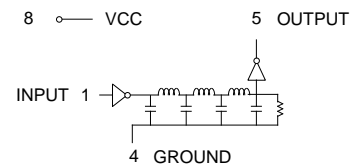
SMD 8 Pin Single Output TTL Compatible Active Delay Lines

TIME DELAY (ns) ±5% or ±2 nS†	PART NUMBER	TIME DELAY (ns) ±5% or ±2 nS†	PART NUMBER
5	EPA426-5	50	EPA426-50
10	EPA426-10	60	EPA426-60
12	EPA426-12	75	EPA426-75
15	EPA426-15	100	EPA426-100
20	EPA426-20	125	EPA426-125
25	EPA426-25	150	EPA426-150
30	EPA426-30	175	EPA426-175
35	EPA426-35	200	EPA426-200
40	EPA426-40	225	EPA426-225
45	EPA426-45	250	EPA426-250

†Whichever is greater. Delay Times referenced from input to leading edges at 25°C, 5.0V, with no load.

DC Electrical Characteristics		Min	Max	Unit
Parameter	Test Conditions			
V _{OH}	High-Level Output Voltage	2.7		V
V _{OL}	Low-Level Output Voltage		0.5	V
V _{IK}	Input Clamp Voltage		-1.2	V
I _{IH}	High-Level Input Current		50	µA
	V _{CC} = min. V _{IH} = min. I _{OL} = max		1.0	mA
	V _{CC} = max. V _{IN} = 2.7V		-2	mA
	V _{CC} = max. V _{IN} = 5.25V		-100	mA
I _{IL}	Low-Level Input Current		75	mA
I _{OS}	Short Circuit Output Current	-40	75	mA
I _{CCH}	High-Level Supply Current		75	mA
I _{CCL}	Low-Level Supply Current		75	mA
T _{RO}	Output Rise Time		4	nS
N _H	Fanout High-Level Output		20 TTL LOAD	
N _L	Fanout Low-Level Output		10 TTL LOAD	

Schematic



Recommended Operating Conditions		Min	Max	Unit
V _{CC}	Supply Voltage	4.75	5.25	V
V _{IH}	High-Level Input Voltage	2.0		V
V _{IL}	Low-Level Input Voltage		0.8	V
I _{IK}	Input Clamp Current		-18	mA
I _{OH}	High-Level Output Current		-1.0	mA
I _{OL}	Low-Level Output Current		20	mA
PW*	Pulse Width of Total Delay	40		%
d*	Duty Cycle		40	%
T _A	Operating Free-Air Temperature	0	+70	°C

*These two values are inter-dependent.

Input Pulse Test Conditions @ 25° C		Unit
E _{IN}	Pulse Input Voltage	3.2 Volts
PW	Pulse Width % of Total Delay	110 %
T _{RI}	Pulse Rise Time (0.75 - 2.4 Volts)	2.0 nS
P _{RR}	Pulse Repetition Rate @ T _d ≤ 200 nS	1.0 MHz
	Pulse Repetition Rate @ T _d > 200 nS	100 KHz
V _{CC}	Supply Voltage	5.0 Volts

Package Dimensions

