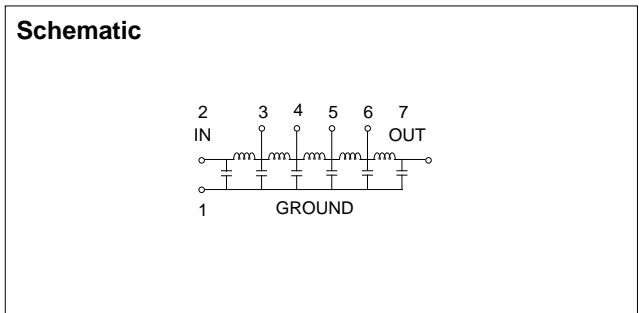


# 7 Pin Single-in-Line Package Passive Delay Lines

Zo OHMS ±10%	DELAY nS ±5% or ±2 nS†	TAP DELAYS ±5% or ±2 nS†	RISE TIME nS Max.	DCR OHMS Max.	PCA PART NUMBER	Zo OHMS ±10%	DELAY nS ±5% or ±2 nS †	TAP DELAYS ±5% or ±2 nS†	RISE TIME nS Max.	DCR OHMS Max.	PCA PART NUMBER
50	5	1	2	0.3	EP120650	100	5	1	2	0.5	EP120661
50	10	2	3	0.5	EP120651	100	10	2	3.3	1.0	EP120662
50	20	4	6	0.8	EP120652	100	20	4	6	1.5	EP120663
50	30	6	9	1.2	EP120653	100	30	6	9	2.5	EP120664
50	40	8	12	1.8	EP120654	100	40	8	11	4.0	EP120665
50	50	10	15	2.3	EP120655	100	50	10	14	5.0	EP120666
50	60	12	18	2.5	EP120656	100	60	12	17	5.5	EP120667
50	70	14	22	3.5	EP120657	100	70	14	21	6.0	EP120668
50	80	16	24	4.2	EP120658	100	80	16	23	6.5	EP120669
50	90	18	27	4.5	EP120659	100	90	18	25	7.0	EP120670
50	100	20	28	5.2	EP120660	100	100	20	28	7.5	EP120671

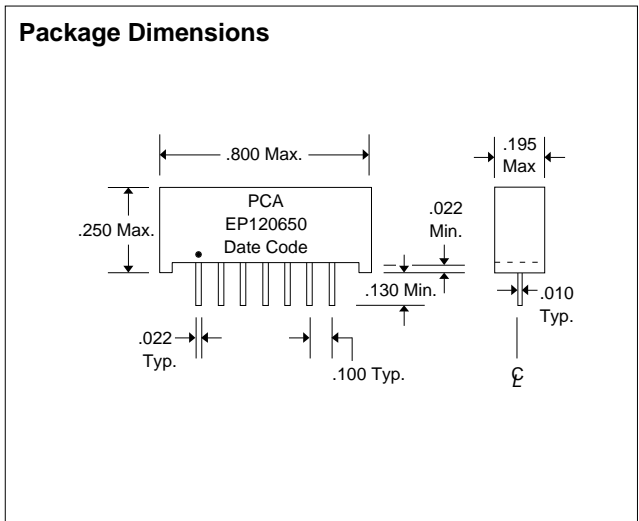
† Whichever is greater.

DC Electrical Characteristics	Min	Max	Unit
Distortion		±10	%
Temperature Coefficient of Delay		100	PPM/°C
Insulation Resistance @ 100 Vdc	1K		Meg Ohms
Dielectric Strength		100	Vdc



Recommended Operating Conditions	Min	Max	Unit
PW* Pulse Width % of Total Delay	200		%
D* Duty Cycle		40	%
TA Operating Free Air Temperature	0	70	°C

\*These two values are inter-dependent.



Input Pulse Test Conditions @ 25°C		
V <sub>IN</sub>	Pulse Input Voltage	3 Volts
PW	Pulse Width % of Total Delay	300 %
TR	Input Rise Time (10 - 90%)	2.0 nS
PRR	Pulse Repetition Rate @ T <sub>d</sub> ≤ 150 nS	1.0 MHz
	Pulse Repetition Rate @ T <sub>d</sub> > 150 nS	300 KHz