

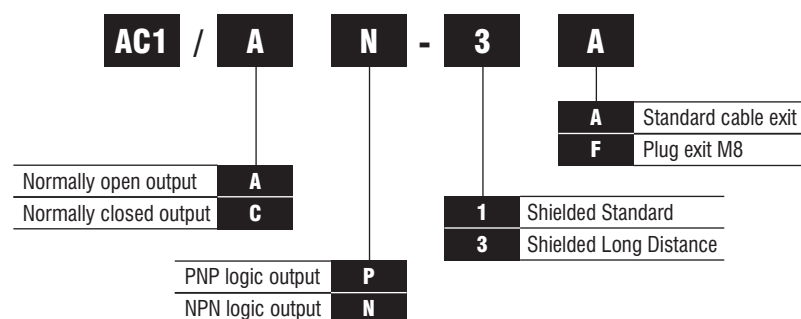
Miniature Inductive 3-wire DC Proximity Switch AC1



- Ultra small 4mm diameter stainless steel housing
- Shielded models
- IP67 Protection degree
- Short circuit and over-voltage protection
- LED status indicator
- Nominal sensing distance: Shielded Standard 0.8mm
Shielded Long Distance 1.5mm



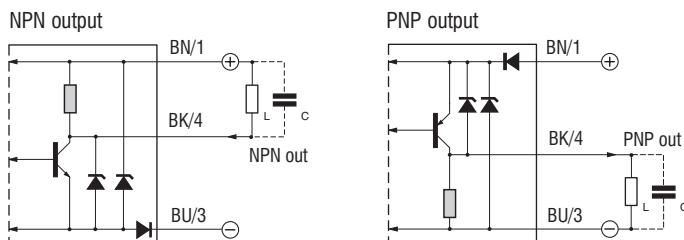
Options and ordering codes



Specifications

Model	AC1/xx-1x	AC1/xx-3X
Nominal sensing distance S_n	0.8mm	1.5mm
Hysteresis	1 to 20%	
Standard target	4 x 4mm	4.5 x 4.5mm
Repeat accuracy	5% @ $U_B = 20$ to 30 V; $T_a = 23^\circ\text{C} \pm 5^\circ\text{C}$	
Operating voltage	10 to 30 VDC	
Ripple	$\leq 10\%$	
Output current	≤ 100 mA	
Output voltage drop	≤ 1.5 V @ 100mA	
No-load current	≤ 10 mA	
Leakage current	≤ 10 μA	
Switching frequency	7 kHz	
Time delay before availability	≤ 50 ms	
Temperature range	-25°C to $+70^\circ\text{C}$	
Thermal drift	$\leq 10\%$	
Supply electrical protection	polarity reversal	
Output electrical protection	short circuit (auto reset), overvoltage pulses	
Protection degree	IP67	
Housing material	stainless steel AISI 303	
Active head material	PBT	
LED indicators	On (yellow LED)	

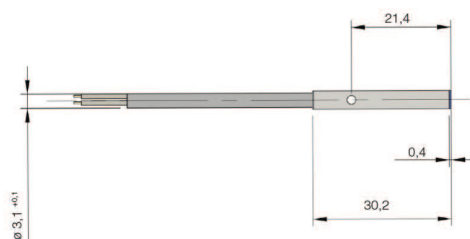
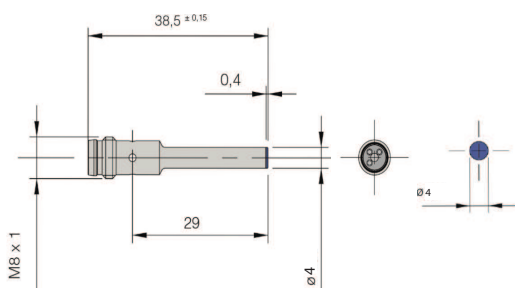
Wiring diagrams



Correction factor

Model	FE360	Copper	Aluminum	Brass	Stainless Steel
AC1/xx-1x	1	$0.28 \pm 10\%$	$0.21 \pm 10\%$	$0.32 \pm 10\%$	$0.63 \pm 10\%$
AC1/xx-3X	1	$0.29 \pm 10\%$	$0.23 \pm 10\%$	$0.31 \pm 10\%$	$0.66 \pm 10\%$

Dimensions (mm)



Connectors M8

