

Part No.	Size	Weight
E2M	20'H x 16"W x 4.5'D	16 lb.

### Overview

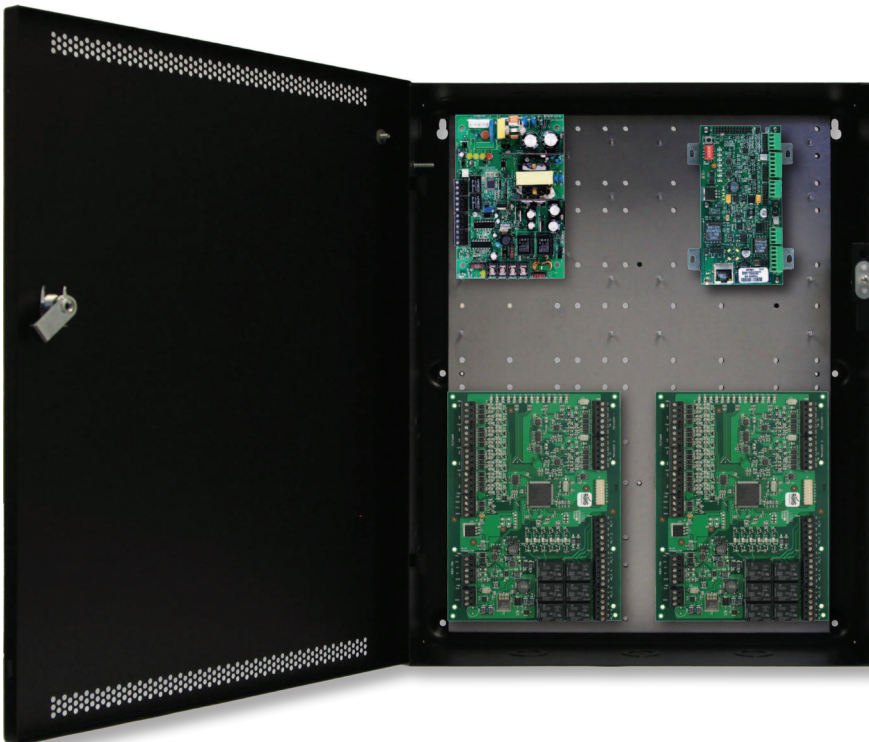
MCLASS multi-purpose enclosures offer maximum flexibility, functionality and savings to access system designers. MCLASS enclosures are engineered to house FlexPower® power management boards alongside access hardware in one compact, secure system.

To prevent damage to system electronics, the backplate separates from the enclosure for access hardware mounting in the shop while wiring is pulled to the enclosure at the job site. Once configured, the backplate can be re-mounted for final ties and checkout.

### Features

- Mounts LSP power and access hardware in a variety of combinations
- Removable back plate simplifies job installation
- Logical mounting pattern for access and power
  - ◆ Hole pattern mounts LSP power boards
  - ◆ Stud pattern mounts Mercury panels
- Mechanical refinements
  - ◆ 4.5" enclosure depth to accommodate battery
  - ◆ 19 Gauge steel with textured black finish
  - ◆ Lock and tamper switch standard

### Flexible Backplate Mounting System



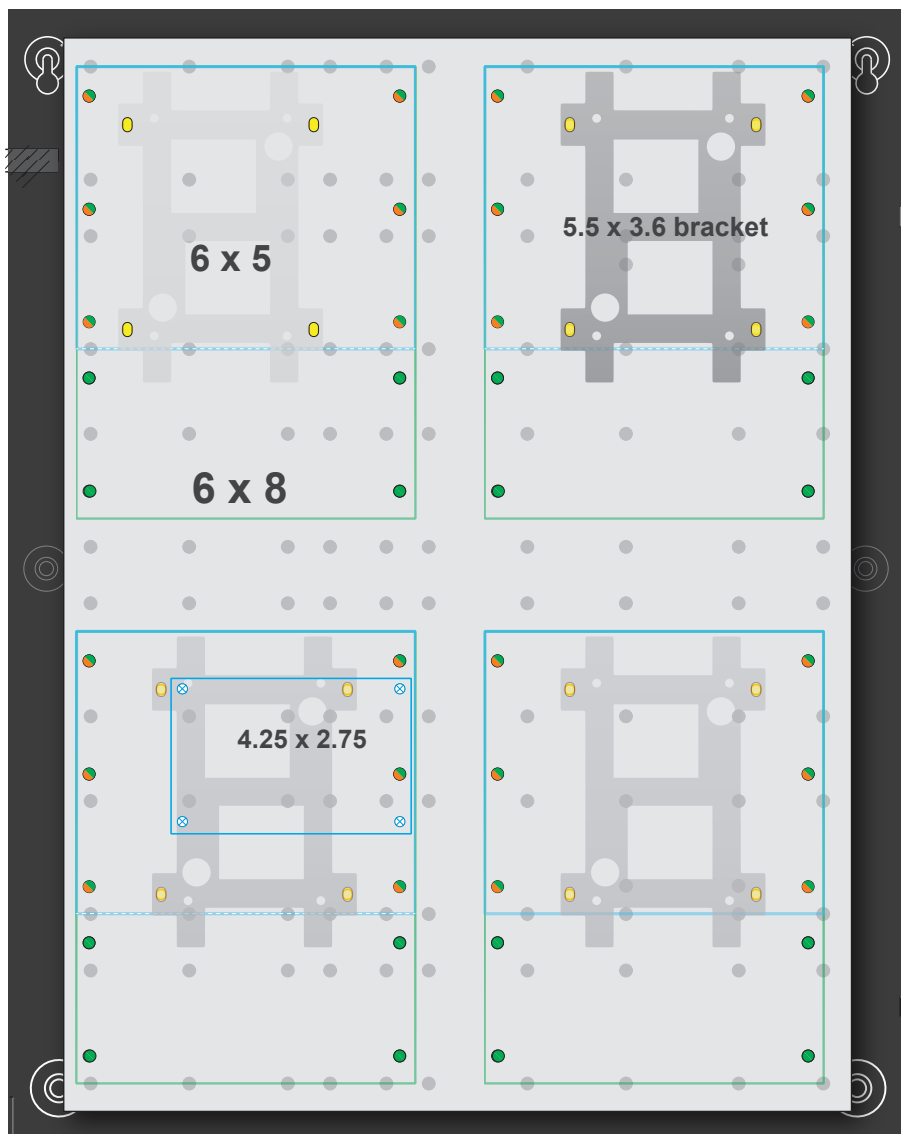
The E2M backplate is removable and mounts Mercury access hardware and FlexPower modules in a variety of combinations.

FlexPower components mount in predrilled hole patterns. Mercury / Lenel hardware mounts on a threaded stud pattern so as to preserve a visible difference between the two equipment mounting mechanisms.





A complete set of hardware is supplied for mounting Mercury / Lenel panels into the E2M MCLASS enclosure.

E2M access mounting combinations

Panel Footprint	Model Number		Max with Power	Max all Access
4.25 x 2.75	MR50	LNL-1300	1	1
5.5 x 3.6 (bracket)	EP1501	LNI-2210	3	4
5.5 x 3.6 (bracket)	MR51e	no cross	3	4
6 x 5	-	LNL-500	3	4
6 x 5	EP2500	LNL-3300	3	4
6 x 5	MUX-8	LNL-8000	3	4
6 x 8	EP1502	LNL-2220	3	4
6 x 8	MR52	LNL-1320	3	4
6 x 8	MR16in	LNL-1100	3	4
6 x 8	MR16out	LNL-1200	3	4
6 x 8	-	LNL-2000	3	4

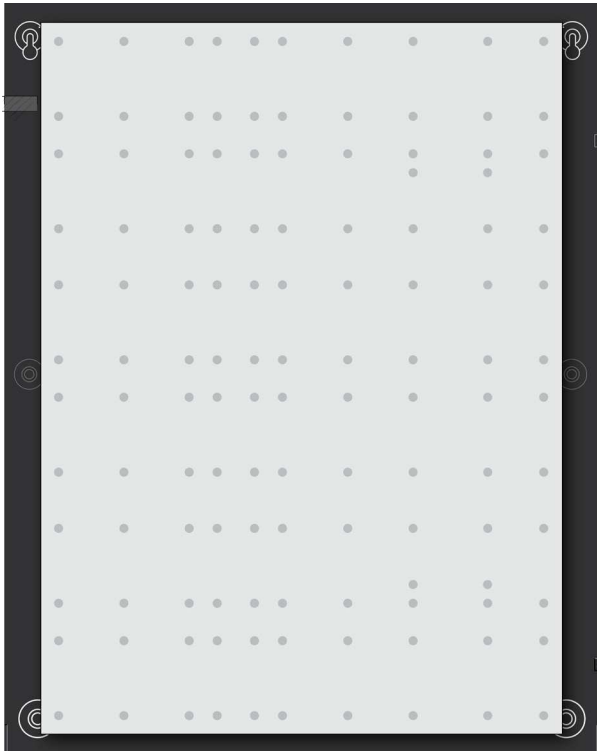


**MOUNTING PATTERN KEY**

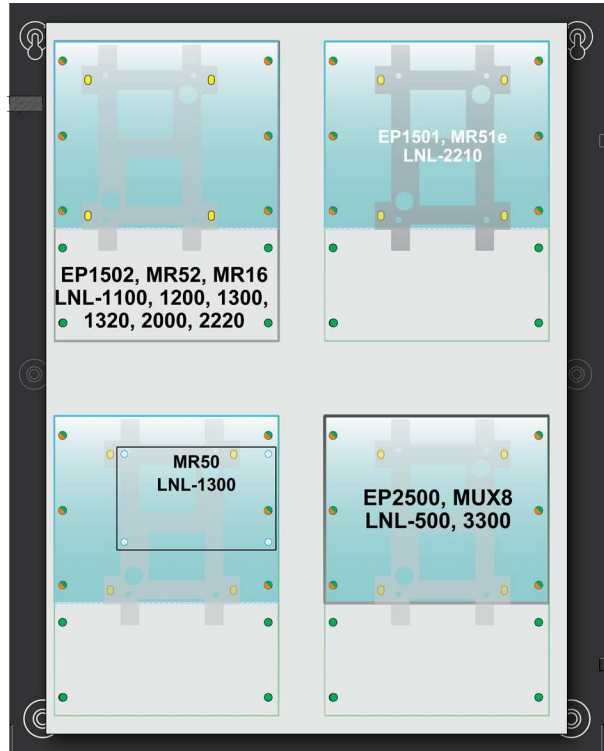
-  (4) slots 6 x 5 board size
-  (4) slots 6 x 8 board size
-  (4) slots 5.5 x 3.6 (bracket)
-  (1) slot 2.75 x 4.25 board size

## BACKPLATE MOUNTING PATTERNS

Hole pattern for FlexPower modules

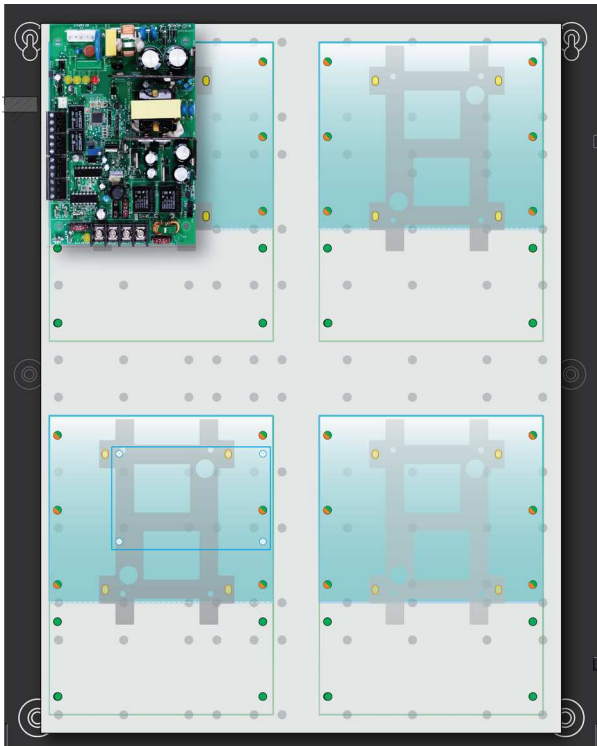


Stud pattern for Mercury access hardware



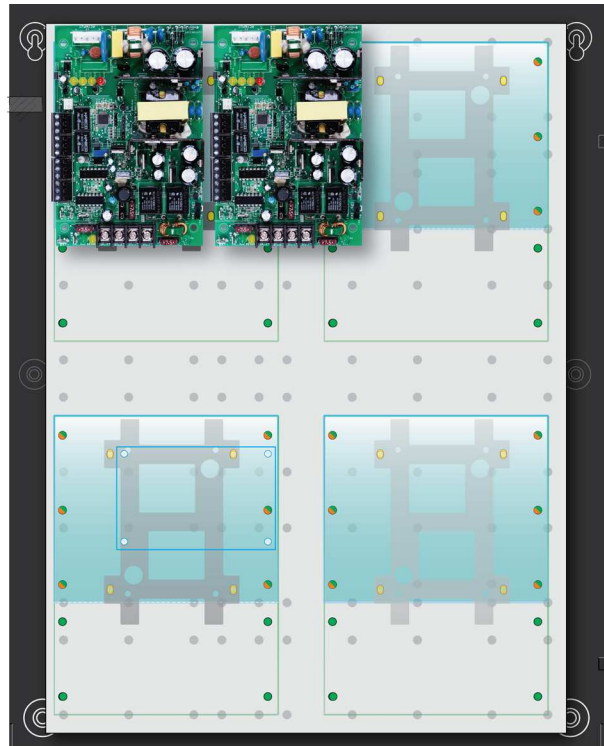
## TYPICAL SYSTEM CONFIGURATIONS

Power up to three controllers



◆ FPO75-E2M

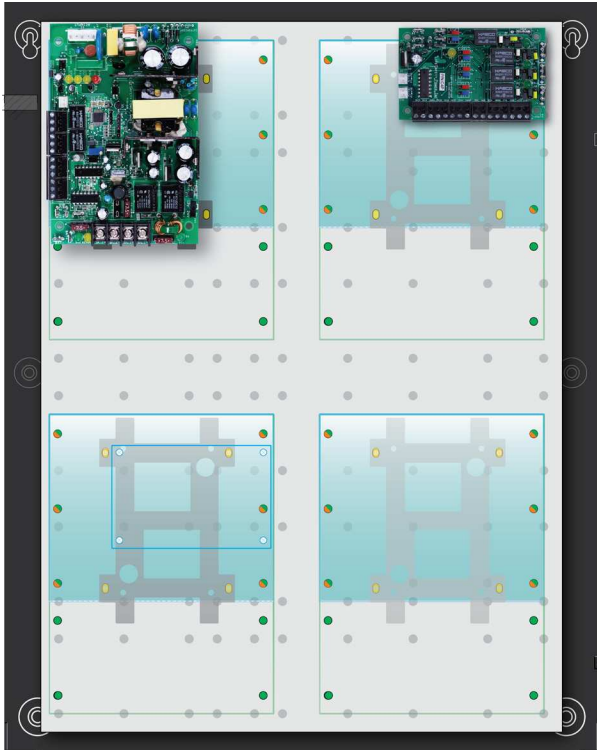
Independent 12 and 24VDC power



◆ FPO75/75-E2M

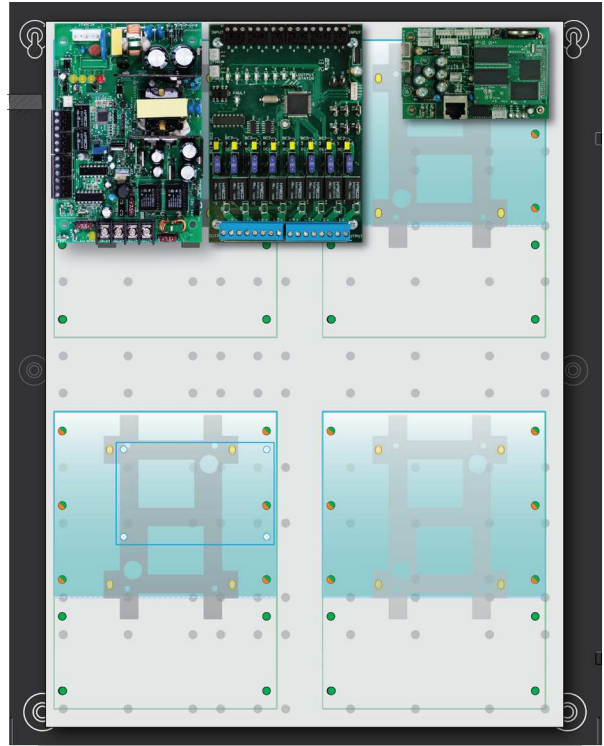
## TYPICAL SYSTEM CONFIGURATIONS

*C4 lock board protects Mercury panels*



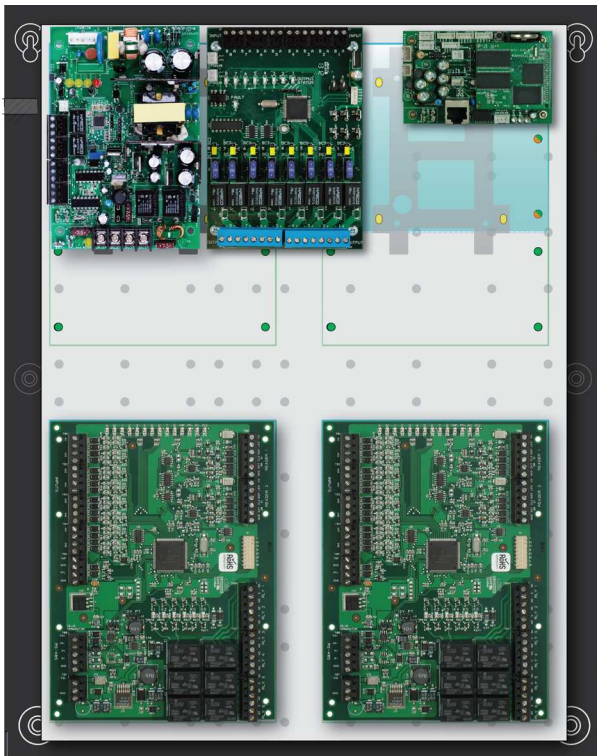
◆ FPO75/75-E2M

*M8 managed lock board for protection AND remote monitoring*

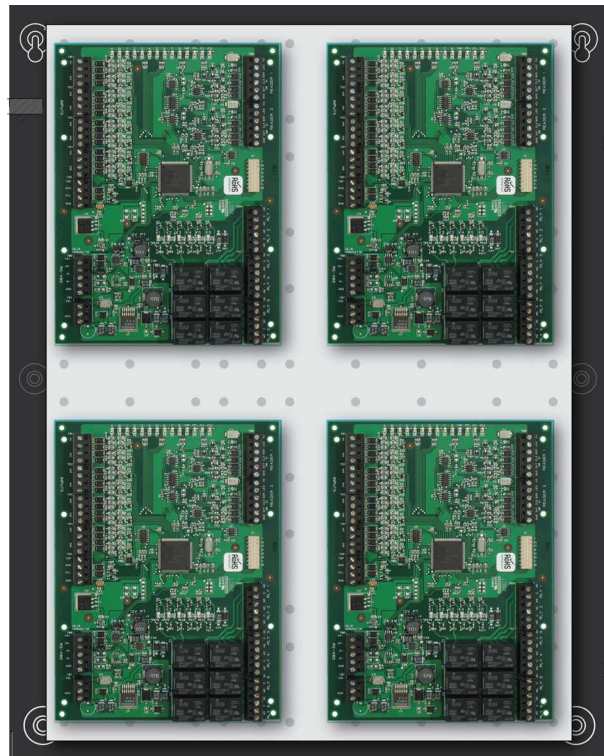


◆ FPO75/75-E2M

*Remote monitored power - 4 doors*

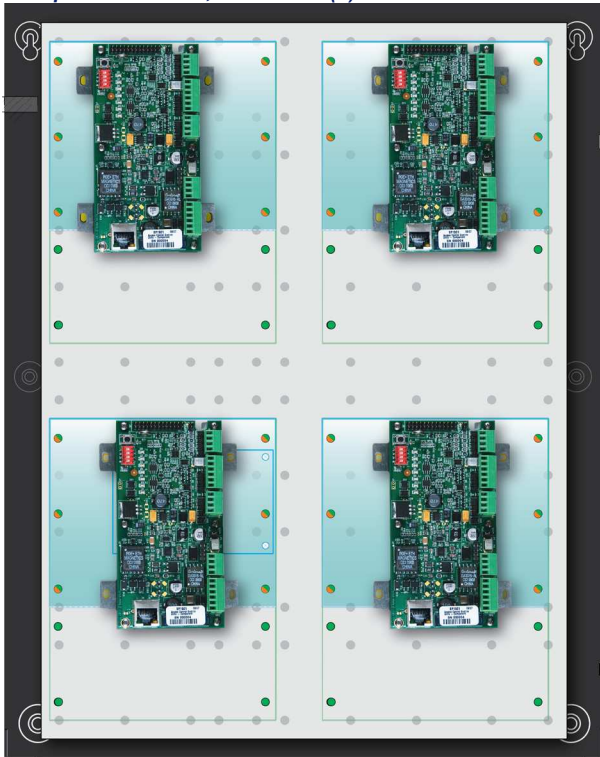


*Backplate fits up to four MR52 sized boards*

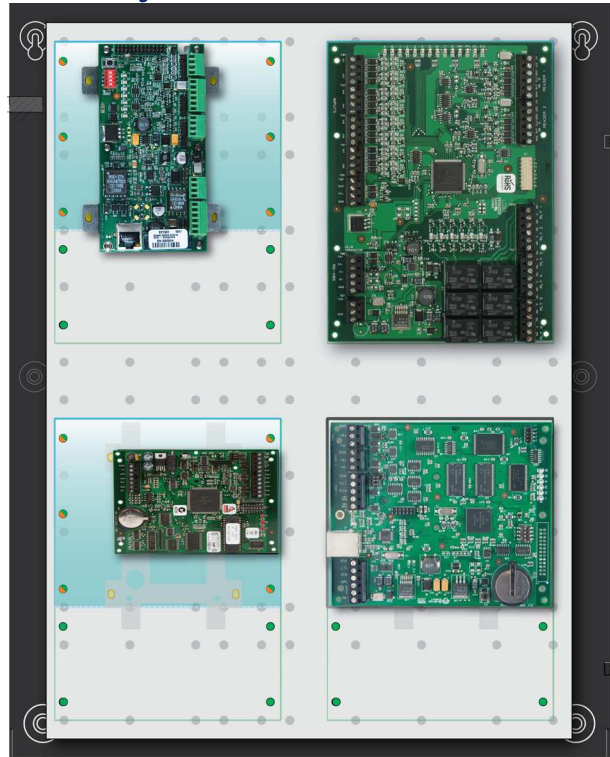


## TYPICAL CONFIGURATIONS

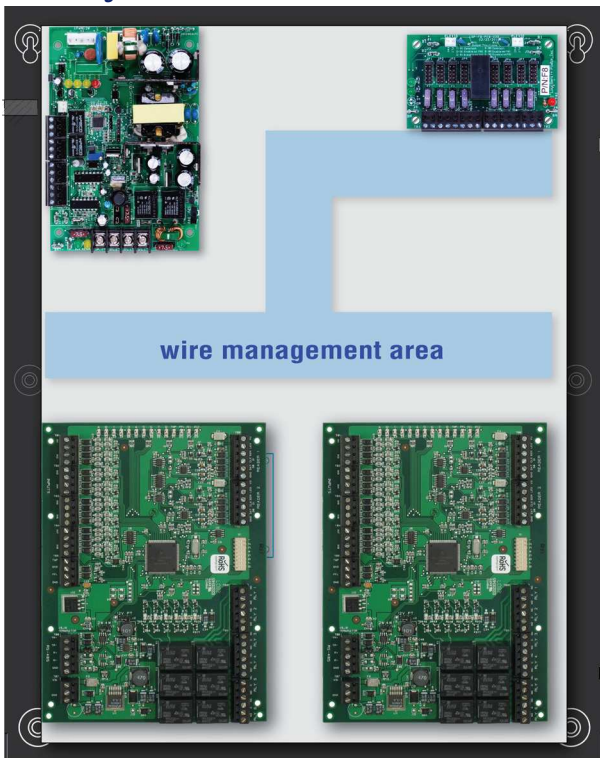
Fits up to four EP1501, MR51e and (1) MR50



Other mounting variations



Wire management



**Worldwide Headquarters**  
**LifeSafety Power, Inc.**  
750 Tower Road, Unit B  
Mundelein, IL 60060 USA  
PH 888-577-2898  
info@lifesafetypower.com

**Important:** All information, including illustrations, is believed to be reliable. Users, however, should independently evaluate the suitability of each product for their particular application. LifeSafety Power makes no warranties as to the accuracy or completeness of the information, and disclaims any liability regarding its use. LifeSafety Power's only obligations are those in the LifeSafety Power Standard Terms and Conditions of Sale for this product, and in no case will LifeSafety Power or its distributors be liable for any incidental, indirect, or consequential damages arising from the sale, resale, use, or misuse of the product. Specifications are subject to change without notice. In addition, LifeSafety Power reserves the right to make changes—without notification to Buyer—to processing or materials that do not affect compliance with any applicable specification.

LifeSafety Power, FlexPower, DataLink, GreenSmart, FlexConnect, PowerCom, Reliability+, SureCharge, TruWatt, and VSelect are registered trademarks of LifeSafety Power Inc. or its affiliates.

© 2014 LifeSafety Power Inc. P01-460A 06/14