

Part No.	Size	Weight
E1M	14"H x 12"W x 4.5"D'	13 lb.

Overview

MCLASS multi-purpose enclosures offer maximum flexibility, functionality and savings to access system designers. MCLASS enclosures are engineered to house FlexPower® power management boards alongside access hardware in one compact, secure system.

To prevent damage to system electronics, the backplate separates from the enclosure for access hardware mounting in the shop while wiring is pulled to the enclosure at the job site. Once configured, the backplate can be re-mounted for final ties and checkout.

Features

- Mounts LSP power and access hardware in a variety of combinations
- Removable back plate simplifies job installation
- Logical mounting pattern for access and power
 - ◆ Hole pattern mounts LSP power boards
 - ◆ Stud pattern mounts Mercury panels
- Mechanical refinements
 - ◆ 4.5" enclosure depth to accommodate battery
 - ◆ 19 Gauge steel with textured black finish
 - ◆ Lock and tamper switch standard

Flexible Backplate Mounting System



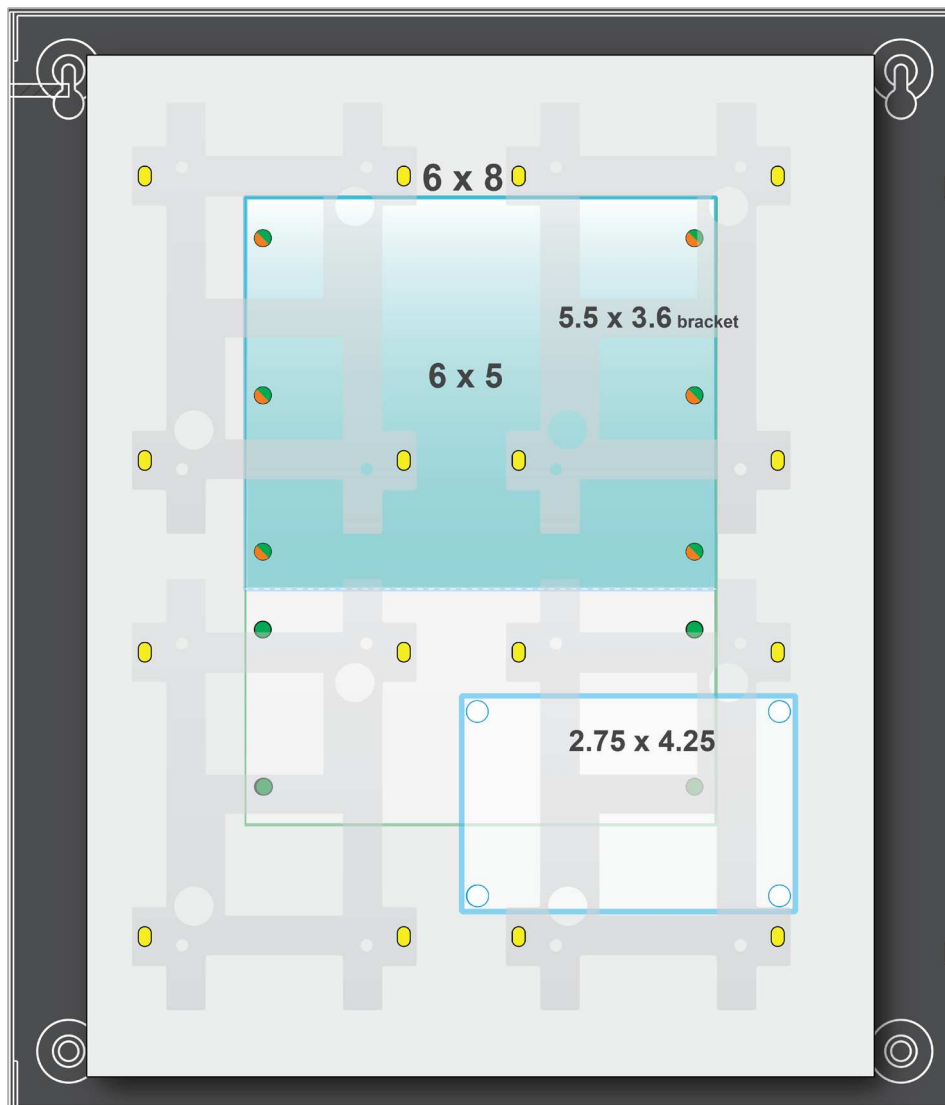
The E1M backplate is removable and mounts Mercury access hardware and FlexPower modules in a variety of combinations.

FlexPower components mount in predrilled hole patterns. Mercury / Lenel hardware mounts on a threaded stud pattern so as to preserve a visible difference between the two equipment mounting mechanisms.

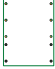



A complete set of hardware is supplied for mounting Mercury / Lenel panels into the E1M MCLASS enclosure.

E1M access mounting combinations

Panel Footprint	Model Number		Max fit w/ Power	Max all Access
4.25 x 2.75	MR50	LNL-1300	1	1
5.5 x 3.6 (bracket)	EP1501	LNI-2210	3	4
5.5 x 3.6 (bracket)	MR51e	no cross	3	4
6 x 5	-	LNL-500		1
6 x 5	EP2500	LNL-3300		1
6 x 5	MUX-8	LNL-8000		1
6 x 8	EP1502	LNL-2220		1
6 x 8	MR52	LNL-1320		1
6 x 8	MR16in	LNL-1100		1
6 x 8	MR16out	LNL-1200		1
6 x 8	-	LNL-2000		1

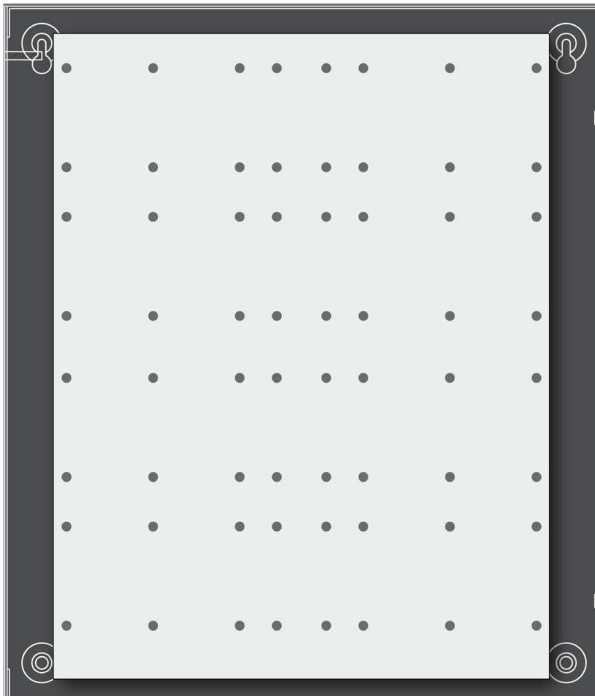


MOUNTING PATTERN KEY

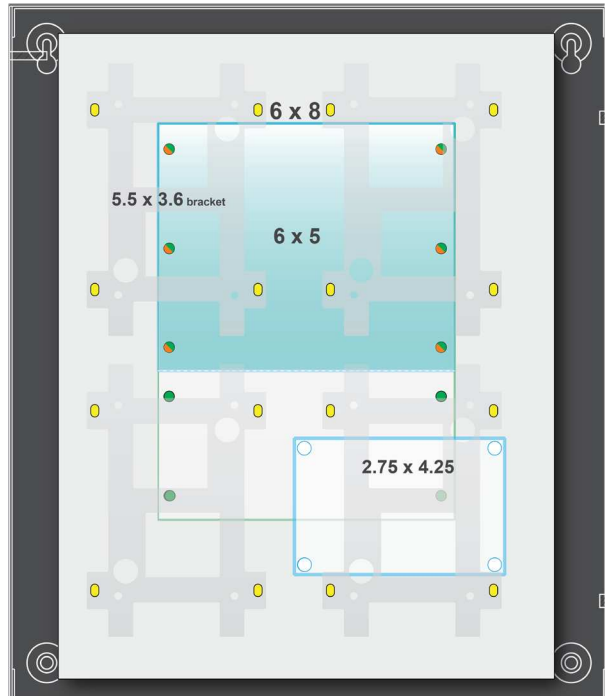
-  (1) slot 6 x 8 board size
-  (1) slot 6 x 5 board size
-  (4) slots 5.5 x 3.6 (bracket)
-  (1) slot 2.75 x 4.25 board size

BACKPLATE MOUNTING PATTERNS

Hole pattern for FlexPower modules

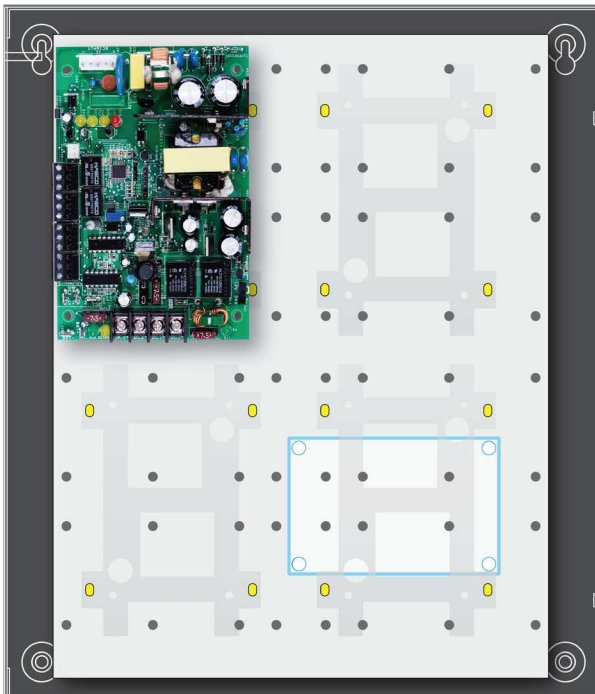


Hole pattern for Mercury access hardware



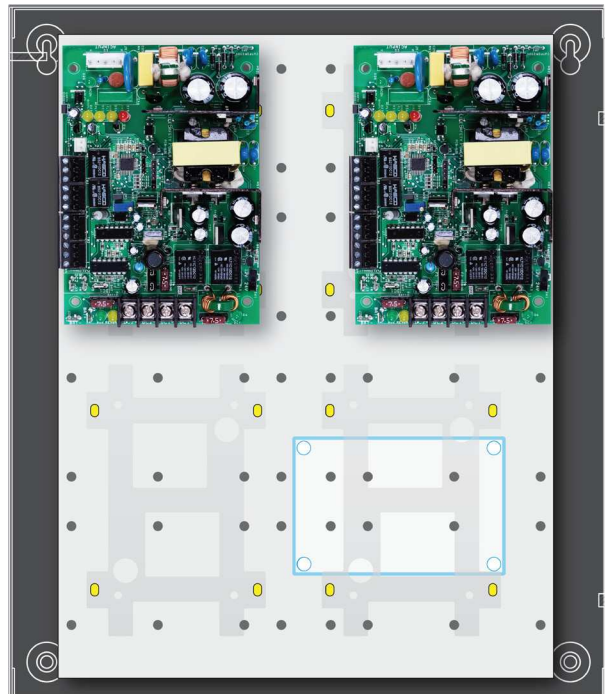
TYPICAL SYSTEM CONFIGURATIONS

Power up to three controllers



◆ FP075-E1M

Independent 12 and 24VDC power



◆ FP075/75-E1M

TYPICAL SYSTEM CONFIGURATIONS

Two door with 8 auxiliary and 4 relay control outputs



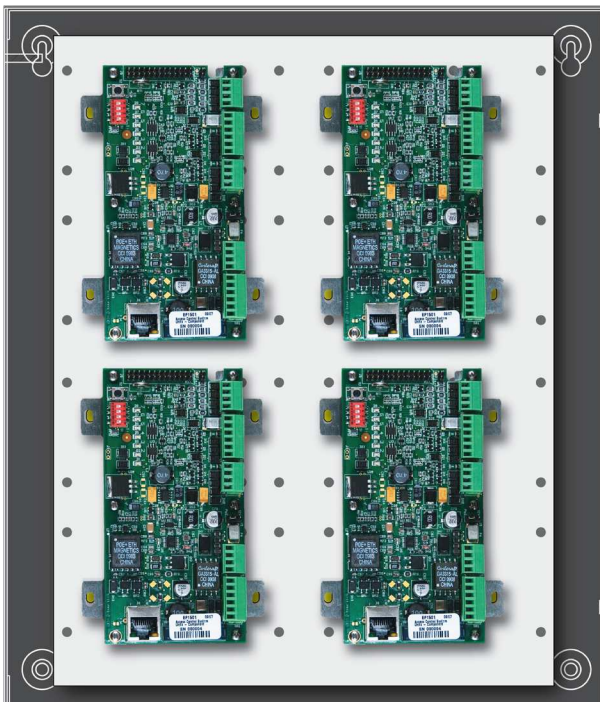
◆ FPO75-C4D8E1M

Remote monitoring ps and 8 relay control outputs

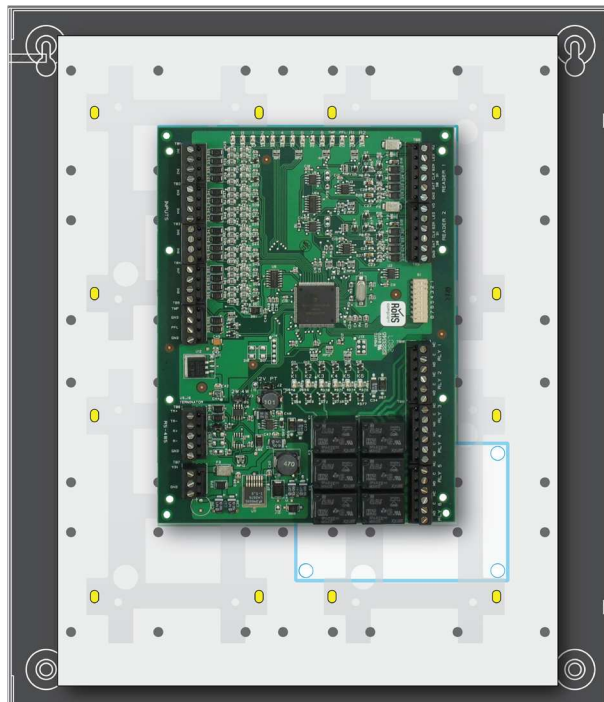


◆ FPO75-M8NL4E1M

Backplate fits up to four EP1501 sized boards



Backplate mounts one MR52 sized board in vertical position



Worldwide Headquarters
LifeSafety Power, Inc.
 750 Tower Road, Unit B
 Mundelein, IL 60060 USA
 PH 888-577-2898
 info@lifesafetypower.com

Important: All information, including illustrations, is believed to be reliable. Users, however, should independently evaluate the suitability of each product for their particular application. LifeSafety Power makes no warranties as to the accuracy or completeness of the information, and disclaims any liability regarding its use. LifeSafety Power's only obligations are those in the LifeSafety Power Standard Terms and Conditions of Sale for this product, and in no case will LifeSafety Power or its distributors be liable for any incidental, indirect, or consequential damages arising from the sale, resale, use, or misuse of the product. Specifications are subject to change without notice. In addition, LifeSafety Power reserves the right to make changes—without notification to Buyer—to processing or materials that do not affect compliance with any applicable specification.

LifeSafety Power, FlexPower, Reliability+, SureCharge, TruWatt, and VSelect are registered trademarks of LifeSafety Power Inc. or its affiliates.

© 2014 LifeSafety Power Inc. P01-459A 06/14