



Features and Functions

Enables network connectivity of AC cctv systems for remote power reset

- ◆ 24/7 network power management
- ◆ Provides individual control for two voltage busses

PowerCom interface provides power status monitoring of

- ◆ Voltage presence
- ◆ Cabinet temperature

Network & Email alerts for

- ◆ System service interval
- ◆ External event activation (ie tamper switch)

Description

NETLINK is a patented networked power management system for security and life safety applications.

The NLR is an add on accessory kit used with LifeSafety Power's FPA AC power management systems that enables remote power cycling of two AC outputs. The NLR kit consists of one (1) NL1 NetLink WAN/LAN communication module and one (1) NS2 AC-DC relay module for connection to the AC input.

The use of this kit with FlexPower AC equipment is intended to provide an "ON-OFF" capability for use when a "reboot" is necessary to restore a device to service, such as a frozen camera dome. The NLR allows the camera to be reset from a remote location and eliminates the need to dispatch a technician to perform that service.

The NLR can control up to two voltage busses with the included NS2 board from the network or internet.

Agency Listings UL2044, UL294, UL60950-1

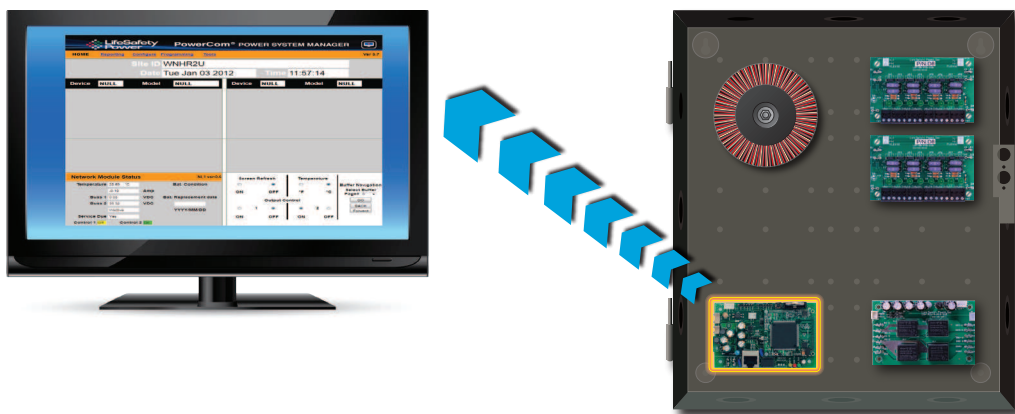
Electrical Ratings	Specification
Input Operating Voltage	9 to 30 VDC
Input Operating Current	60 mA nominal
Network Data Rate	10/100 Mbps
Event Input	9 to 32 VDC
Output 1, 2 Max Sink Current	50 mA nominal

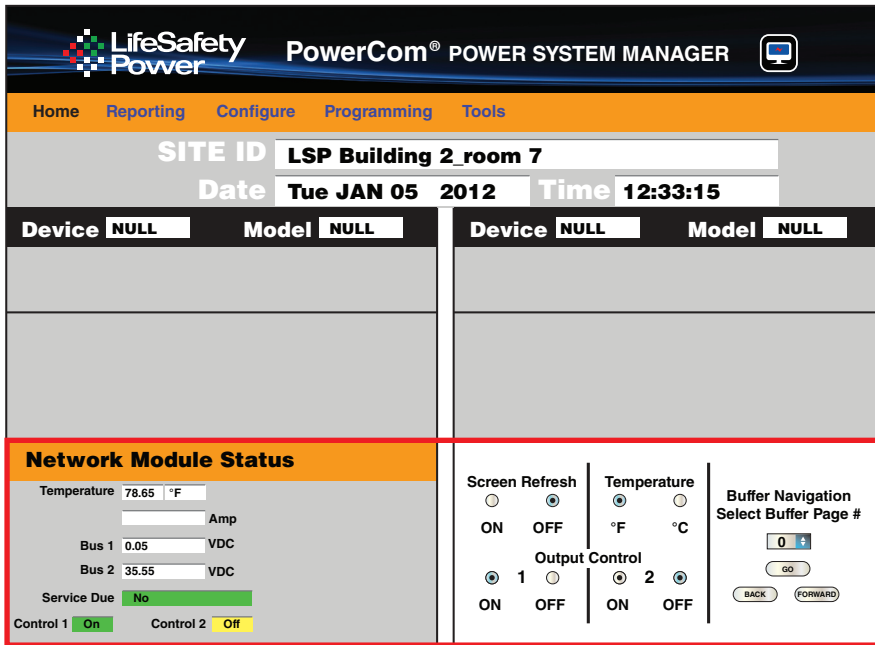
Ordering	Mechanical Information
NLR FPA Remote Reset Kit	Size: 4" x 2.5" x 1.5" Weight: .50 lb.

Provided with Cables, Mounting Hardware

Monitoring / Reporting / and Control Function

Monitored Parameters	Event-triggered Alerts & Reports	Control Functions
Cabinet Temperature	Notification of System Service	Output 1 (On or Off)
Voltage Presence	Scheduled System Status Report	Output 2 (On or Off)
	Event Activation Alert (<i>user specified</i>)	





NLR Browser Home Screen

When used in an AC system, the PowerCom Manager screen has functions limited to the red box area

Network module status screen

- ◆ Cabinet temperature
- ◆ Buss 1 and 2 voltage
- ◆ Service due date

Control 1 and Control 2 status

- ◆ Yellow = OFF
- ◆ Green = ON

LifeSafetyPower.com

(888) 577-2898
 info@lifesafetypower.com

Specifications subject to change without notice.

© 2013 LifeSafety Power Inc. All rights reserved. LifeSafety Power and FlexPower are registered trademarks of LifeSafety Power Inc. All other trademarks and copyrights are the property of their respective owners.

P01-300A 12/13

LifeSafety Power, Inc.
 750 Tower Road, Unit B
 Mundelein, IL 60060 USA