

AT-331: Versatile Dual 3 Phase Generator

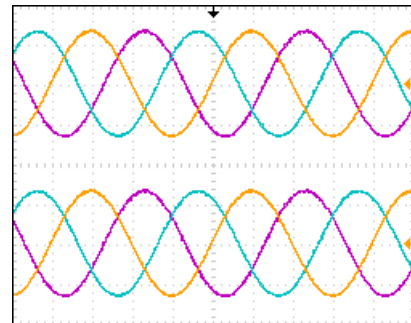
Features

- Dual three-phase outputs
- From 1Hz to 500Hz
- Up to 90V_{RMS}
- Up to 0.5A
- Each phase is independantly configurable
- 4 digital I/O (CMOS levels)
- Individual output TRIP functionality
- Standard EIA 19" chassis
- Configurable by PC interface (USB 2.0)



Applications

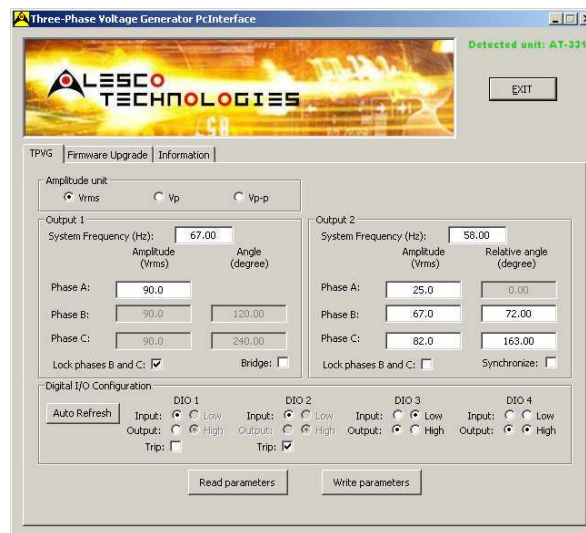
- Laboratory bench dual 3 phase generator
- Protection relay test
- Transfer switch test
- Transformer test



Functionalities Overview

- Bridgeable outputs: When selected, the output power is doubled, but when this functionality is enabled, only one output is available.
- TRIP functionality: Two of the digital I/O could be configured as TRIP inputs. (i.e. When a TRIP input is triggered, the corresponding source is immediately stopped (0Vrms)).
- Synchronized outputs: When selected, both outputs are referred to the same time base.

PC Interface Overview



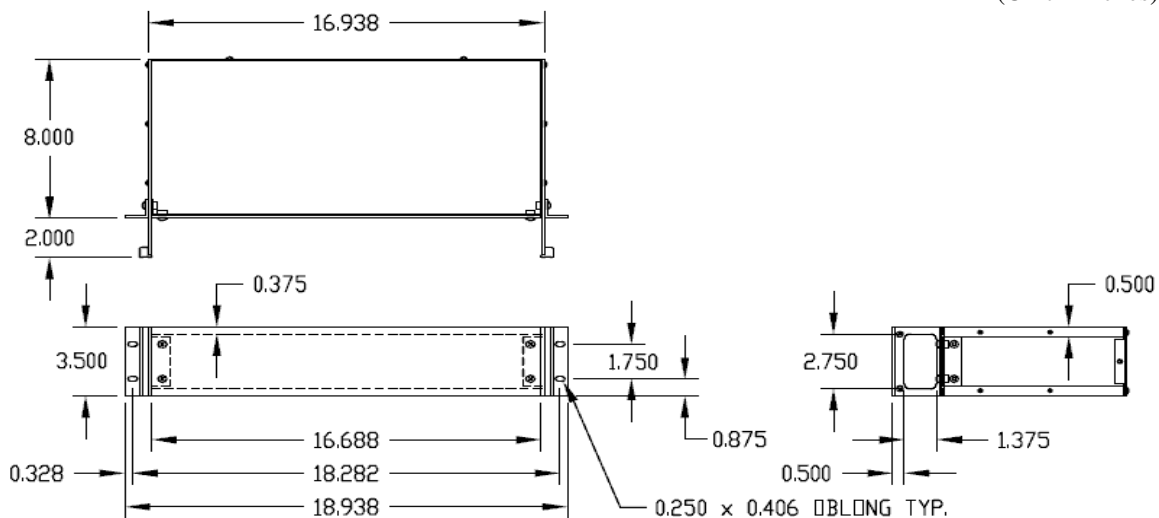
Alesco Technologies
 A division of Sysacom R&D plus inc
 Le Gardeur, Quebec
 324 St-Paul
 Canada, J5Z 4H9

Voice: (450) 585-6396
 Email: support@alesco-technologies.com
www.sysacom.com

Specifications (25°C)	AT-331
Outputs ratings	
Output voltage	0.0Vrms to 90.0Vrms
Output resolution	0.1Vrms
Output frequency	1.00Hz to 500.00Hz
Frequency resolution	0.01Hz
Frequency tolerance	±300ppm
Output phase	0.00° to 360.00°
Phase resolution	0.01°
Maximum output current per phase	0.5A
Maximum output current per phase (bridged)	1.0A
Maximum output power per phase	45VA
Maximum output power per phase (bridged)	90VA
Maximum total output power	270VA
Over current protection (per phase)	0.9A
Sampling frequency	36.621KHz
Signal integrity, second harmonic (I _L = 0.5A @ 400Hz)	-42.5dB
Signal integrity, third harmonic (I _L = 0.5A @ 400Hz)	-46.6dB
Signal integrity, fourth harmonic (I _L = 0.5A @ 400Hz)	-74.0dB
Digital I/O	
Type	CMOS with 4.7K pull-up to 5V
V _{IH MIN}	3.7V
V _{IL MAX}	1.3V
V _{OH MIN}	4.7V
V _{OL MAX}	0.2V
Output impedance	100Ω
Maximum output current	20mA
TRIP input	Positive logic (active high)
Environment	
Operating Temperature Range	+5°C to +40°C
Storage Temperature Range	+5°C to +40°C
Electrical	
Supply Voltage	115V _{AC} ± 10% @ 50/60Hz
Supply current max.	600VA

Mechanical

(Unit = inches)



Alesco Technologies
 A division of Sysacom R&D plus inc
 Le Gardeur, Quebec
 324 St-Paul
 Canada, J5Z 4H9

Voice: (450) 585-6396
 Email: support@alesco-technologies.com
www.sysacom.com