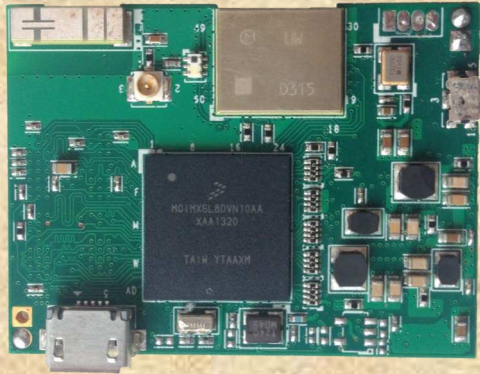


# i.MX\_6 SoloLite Multi-Purpose Wi-Fi Card



## Overview

Based on the **Freescale i.MX\_6 SoloLite Applications Processor**, the i.MX6 SoloLite Multi-purpose Wi-Fi Card is designed for next generation of low power , wireless connectivity. Equipped with more than just Wi-Fi Capabilities, this intelligent controller platform provides high performance processing capabilities and is optimized for lowest power consumption.

Additionally this board can be used as a validation and development platform for software stack development for both i.MX\_6SL processor as well as Wi-Fi interface on i.MX\_6SL processor and as a reference platform for further hardware development.

With an on board Wi-Fi module having Client and Access Point capabilities and peer to peer communication, Multi-purpose Wi-Fi Card allows designers to quickly and seamlessly add internet connectivity to various applications. Low voltage, low power consumption, small footprint and reduced system cost make this multi-purpose Wi-Fi card ideal for a wide range of applications.

Easy Integration

Quicker Time to Market

Reduced Cost

Intelligent Controller

## Features

- + Based on i.MX6 Sololite processor
- + Supports 802.11 a/b/g/n
- + Supports dual band operation at 2.4GHz as well as 5GHz
- + Supports simultaneous AP and Client Modes
- + On board Chip Antennae
- + Option for connecting external antennae
- + Very small Form Factor- 43mm X 32 mm
- + Easily customized to include BT- 4.0 Option
- + CFCC Compliant Ready



# Applications

- + Wi-Fi Proximity Sensor (for Wi-Fi ad blaster)
- + Smart Energy( E.g: Lighting Control)
- + Home/Commercial Automation (E.g: Security, HVAC)
- + Industrial Sensors and controls (E.g: Chemical Sensors, M2M Communication)
- + Medical devices ( E.g: Fitness Equipment, Glucose Meters, Patient Asset Tracking)

# Technical Specifications

## Standard

- + IEEE 802.11 a/b/g/n, Wi-Fi compliant

Standard	Frequency	Data Rate	Mode
802.11 a	5180-5320 MHz	6,9,12,18,24,36,48, 54 Mbps	OFDM
	5500-5700 MHz		
	5745-5825 MHz		
802.11 b	2412-2472 MHz	1,2,5,5,11 Mbps	DSSS/CCK
802.11 g	2412-2472 MHz	6,9,12,18,24,36,48, 54 Mbps	OFDM
802.11 n (2.4 G)	2412-2472 MHz	6.5,13,19.5,26,39,52 ,58.5,65 Mbps	OFDM
802.11 n (5 G)	5180-5320 MHz	6.5,13,19.5,26,39,52 ,58.5,65 Mbps	OFDM
	5500-5700 MHz		
	5745-5825 MHz		

## Chipset i.MX6 Sololite

- + AP: i.MX6 Sololite , ARM Cortex-A9 @ 1 GHz
- + DDR3 Memory: 256/512MB
- + Data Storage: 16/32 MB Serial Flash
- + USB Interface : USB Client for programming and firmware update
- + UART and JTAG Debug Interface

## Software

- + Supports Linux Operating System
- + Security: WEP, WPA, WPA2
- + DHCP Enabled
- + TFTP through Wi-Fi
- + HTTP Server Enabled
- + Telnet Support

## Operating Voltage

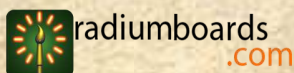
- + DC: 3.3V – 4V

## Environmental

- + Temperature Range: 0 ~ 70°C (Operating)
- + Humidity :15 ~95%

## Physical Specification

- + Dimensions: 43mm X 32 mm



For details on the product contact B-22 Infocity, Sec-34, Gurgaon, Haryana, India-122001  
T:0124-4284250 E: info@radiumboards.com

[www.radiumboards.com](http://www.radiumboards.com)