



THE COMPLETE VIEWER FOR MS PROJECT

celebrating 10 YEARS

10 Years of Project Efficiency for Over 5 Million Customers

Data Sheet

Contents

CONTENTS	2
CHAPTER 1: INTRODUCTION	4
INTRODUCTION	4
USING SEAVUS PROJECT VIEWER™	5
CHAPTER 2: FEATURES AT A GLANCE	7
SUPPORTED FILE FORMAT	7
MICROSOFT® PROJECT 2013	7
MICROSOFT® WINDOWS 8	8
RIBBONS	8
OPEN .SSV FILE FORMAT	8
OPEN .XML FILES	9
OPEN .MDB FILES	9
OPEN .MPD FILES	9
IMPORT FROM MICROSOFT® EXCEL	9
IMPORT FILES WITH ODBC DATA SOURCE	10
MICROSOFT SHAREPOINT INTEGRATION	10
SKYDRIVE INTEGRATION	10
IMPORT FROM GOOGLE DRIVE	11
EXPORT IN MICROSOFT® POWERPOINT	11
SUPPORTED VIEWS	11
SEAVUS CHARTS	13
SUPPORTED REPORTS	13
TABLES, FILTERS AND GROUPS	14
CUSTOM FIELDS	14
ENTERPRISE CUSTOM FIELDS	15
CUSTOM FORMS	15
SAVE MY SETTINGS – USER PROFILE	16
CHANGE LANGUAGE WITHIN THE APPLICATION	16
ADVANCED SEARCH OPTION	16
IMPORT FORM PROJECT SERVER 2013	17

SEAVUS PROJECT VIEWER™ TASK UPDATE	17
SEAVUS PROJECT SEARCH	17
PERFORMANCE	17
IMPROVED RELATIONSHIP WITH CUSTOMERS	18
CHAPTER 3: DETAILED FEATURE LIST	19
<hr/>	
GENERAL FEATURES	19
GANTT CHART VIEWS	22
NETWORK DIAGRAM VIEWS	23
TIMELINE VIEW	24
TEAM PLANNER VIEW	24
CALENDAR VIEWS	24
RESOURCE GRAPH VIEWS	25
TASK SHEET VIEWS	25
RESOURCE SHEET VIEWS	26
TASK USAGE VIEWS	26
RESOURCE USAGE VIEWS	27
RELATIONSHIP DIAGRAM	27
BAR CHART	27
BAR CHART STACKED	28
LINE CHART	28
LINE CHART STACKED	29
PIE CHART	29
TASK ENTRY VIEW	29
TASK FORM VIEW	30
TASK DETAILS FORM VIEW	30
TASK NAME FORM VIEW	30
RESOURCE FORM VIEW	31
RESOURCE NAME FORM VIEW	31
RESOURCE ALLOCATION	31
FIELDS	32
CUSTOM FORMS	33
CUSTOM FIELDS	33
ENTERPRISE CUSTOM FIELDS	33
SAVE MY SETTINGS – USER PROFILE	34
LANGUAGE	35
CHAPTER 4: SYSTEM REQUIREMENTS	36
<hr/>	
SUPPORTED PLATFORMS	36
HARDWARE REQUIREMENTS	37
	38

Chapter 1: Introduction

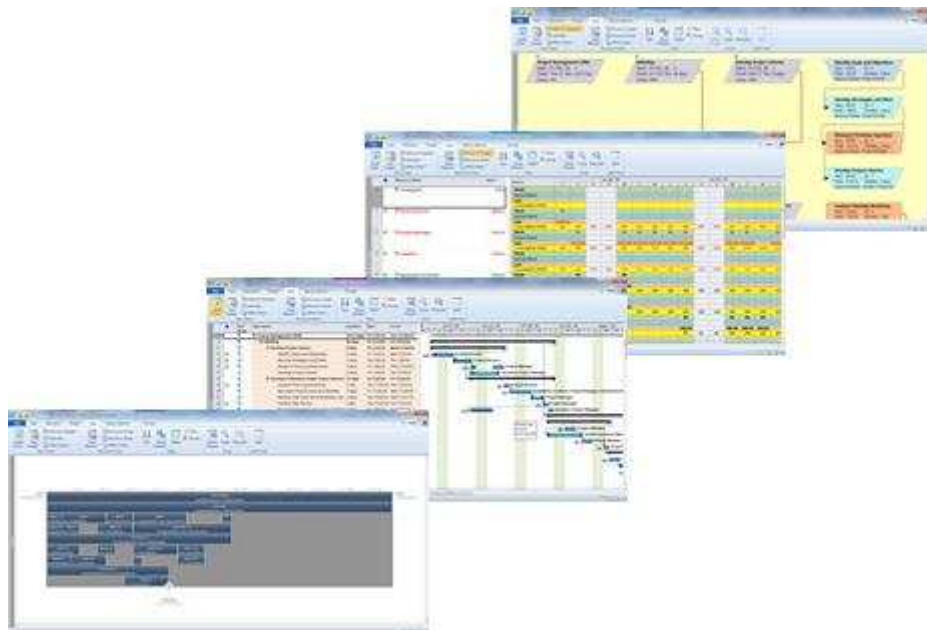
In this section you will learn:

- ✓ What is Seavus Project Viewer™
- ✓ Who can use Seavus Project Viewer™

Introduction

This whitepaper provides business and technical overviews of the Seavus Project Viewer™. It covers the benefits of using Seavus Project Viewer™ application, and gives a description of its features and functions.

Seavus Project Viewer™ is a complete viewer for Microsoft® Project files that facilitates excellent cooperation in projects where the project stakeholders need to view and share information from project management. Seavus Project Viewer™ is a fast and light weight standalone application that reads the native .mpp file format and does not require any previous installation of Microsoft® Project on the user's computer.



Using Seavus Project Viewer™

In general, users of Microsoft® Project plans can be categorized in the following way:

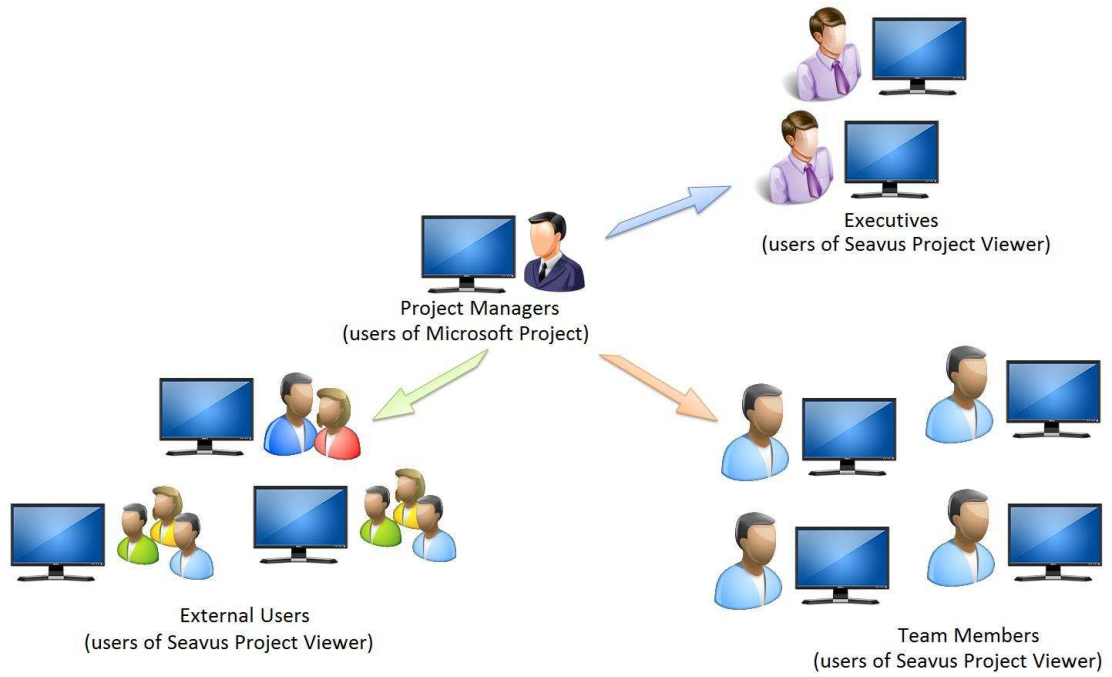
- Users that create/modify project plans, like project manager (the Authors of the project plans) and.
- Users that only need to review and/or analyze the information in the previously prepared project plans (the Viewers of the project plans).

Seavus Project Viewer™ fully satisfies the needs of the second category – the Viewers of the project plans, by providing them with a complete set of views and additional features for reviewing and analyzing project information. Keeping a competitive price, while offering complete and high quality features, Seavus Project Viewer™ not only reduces license costs in organizations substantially, it also enables a vast number of users that were fed with project information through alternative and inefficient means, like file exports or printed plans, due to high cost and complexity of using Microsoft® Project, now to directly communicate with other project stakeholders using the same information and as well.

The Viewers of the project plans can be categorized in the following categories:

- *Team Members* – personnel responsible for many of the day-to-day activities that are scheduled in one or more projects to which they are assigned, and need to frequently look at their assignments in the different projects, making sure they follow the project schedule,
- *Executives* – individuals who are responsible for one or more projects, such as an entire department or a specific region of the organization, and require visibility into all of the projects for which they are responsible, to determine the overall status of projects and to ensure that the work is aligned with the strategic goals of the organization, and
- *External Project Stakeholders* (Vendors, Distributors, Suppliers, Sub-contractors, Customers, etc.) – personnel working at organizations other than the project owner, directly or indirectly involved in the project, and require a possibility to review their assignments or follow the overall project status.

Analysis shows that the number of Viewers of the project plans (potential Seavus Project Viewer™ users) is much greater than the Authors of the same. This is illustrated on the next figure.



Chapter 2: Features At A Glance

In this section you will learn:

- ✓ Which version of Microsoft® Project are supported by Seavus Project Viewer™
- ✓ Which file formats are supported by Seavus Project Viewer™
- ✓ Applications from the Microsoft Office that act as a team with Seavus Project Viewer™
- ✓ Detailed list of supported views

Supported File Format

Seavus Project Viewer™ reads .mpp file format, which is the native file format for Microsoft® Project. The supported versions of the .mpp file format are:

- Microsoft® Project 2003
- Microsoft® Project 2007
- Microsoft® Project 2010
- Microsoft® Project 2013

Microsoft® Project 2013

Seavus Project Viewer™ 2013 supports viewing, analyzing and printing project files created in Microsoft® Project 2013, in addition to all previous versions of Microsoft® Project, from Microsoft® Project 2003 onward.

With Seavus Project Viewer™, the user will see the same visual effects as those in Microsoft® Project 2013, such as the new style contained in the Gantt bars for Auto and Manually scheduled task, Inactive task as well as Gantt bars style colors and fonts.

Microsoft® Windows 8

Seavus Project Viewer™ supports the Microsoft® Windows 8 (Consumer Preview) Operating System. This is in addition to our currently supported platforms (Microsoft® Windows 7, Microsoft® Windows Vista, Microsoft® Windows 2000 Professional & Server, Microsoft® Windows XP Home & Professional Edition, Microsoft® Windows 2003 Server).

Ribbons

Beside the Standard Graphical User Interface (GUI), that consists of menus and toolbars, Seavus Project Viewer™ gives you the possibility to work with Ribbon GUI. By its definition, Ribbon is a single tab bar that contains graphical elements as representation for different functionalities. Several application's control with similar functionalities can form a Group inside the Ribbon.

The Seavus Project Viewer™ Ribbon GUI consists of Application menu, where all features from the File menu from the Standard GUI are placed and Ribbons containing the other viewing features. There is no difference between Standard and Ribbon GUI from functionality point of view: all features from the first workaround are implemented in the other one.

Seavus Project Viewer™ contains five standard ribbons:

- Task
- Resource
- Project
- View
- Seavus Add-ins

Depending from the selected view, at the end of the standard ribbon arrangement, a new ribbon appears. This ribbon contains features that are unique for the selected view or unique to the category that the selected view belongs.

Open .ssv file format

Seavus Project Viewer™ provides a secure file format that allows the user to lock and hide columns that contain sensitive information which project managers do not wish certain parties to be allowed to see. .ssv (Seavus Secure View file) is file format that is generated from Microsoft® Project while using Seavus Secure View add-in. This add-in allows project managers to lock and hide columns that contain information which is not appropriate for certain team members. Once the project plan is saved in .ssv file

format, team members can open the file and work with the information that the project managers have determined will be displayed.

Open .xml files

Project Managers who create project plans in Microsoft Project may choose to save these plans in a file format other than the standard .mpp file format. One such format is XML. The .xml file format allows project managers to publish project information to Web pages or on corporate intranets for viewing i.e. Electronic Publishing. The same .xml file can be sent via e-mail to all team members. Seavus Project Viewer™ is now able to recognize this .xml file format, open the project plan and display all details as shown in the original Microsoft Project® plan.

Open .mdb files

The .MDB file format is the native format of Microsoft Access. Project managers currently may save the entire project plan or part of a project's data in this file format. Seavus Project Viewer™ is now able to recognize this .MDB file format, open the project plan and display all details as shown in the original Microsoft Project® plan.

Open .mpd files

Seavus Project Viewer™ now supports Microsoft Project Database format - .MPD files.

Import From Microsoft® Excel

Seavus Project Viewer™ users now have the ability to import project plan information in .xls/xlsx format (.xls/xlsx is native format of Microsoft® Excel 2003/2007(2010)) exported from Microsoft® Project. All project information that project manager has entered in the project plan and then convert it in .xls/xlsx format, Seavus Project Viewer™ will be able to reproduce them in the same way as they are created in Microsoft® Project.

In addition, users will receive a special Microsoft® Excel template, where they will enter the information for the project plan. This feature allows Project Managers to quickly create project plans in Microsoft® Excel and Seavus Project Viewer™ will then be able to import them and provide users with the ability to see all the views created by the Project Manager.

Import Files With ODBC Data Source

ODBC (Open Data Base Connectivity) data source is set of protocols, drivers and instructions for storing the route to access and work with different data sources. It is a method, which primary role is to access any data from any application, regardless of which database management system (DBMS) is handling the data.

The ODBC data source will allow Seavus Project Viewer™ to access data in DBMS using SQL as a standard for accessing the data.

This mean that the Project managers can publish their project plans created in Microsoft® Project Professional, in the company databases and Seavus Project Viewer™ can access to it, read the .mpp file and present the information to the user.

This feature applies only for Project Server 2003.

Microsoft SharePoint Integration

Microsoft SharePoint is the most used application for storing, organizing, sharing and accessing data, with main accent on content and document management. It is used in most companies from Fortune 500 group. Beside uploading and editing files created in different applications from the Office suite, you can create your own project management environment and upload your project plans on Microsoft SharePoint site specially created for that purpose and share it with your team and project's stakeholders.

With Microsoft's SharePoint integration within Seavus Project Viewer, you do not need a web browser any more for accessing the project files. The workflow is more than simple: Project Manager creates and uploads project plan from Microsoft Project to Microsoft SharePoint. Using the SharePoint functionality in Seavus Project Viewer and its Windows credentials, the team member connects to the specified site where the project plan is located and downloads it. Once the project plan is loaded in Seavus Project plan, team member can use all implemented features for better viewing/printing project's assignments.

SkyDrive Integration

Starting from version 2013, Microsoft has implemented the SkyDrive integration in their Office suite as well as in Microsoft Project. SkyDrive is a file hosting service allowing users to upload, synchronize and share their files to a cloud storage and access them via Web browser or from their PC. Project plans can be uploaded and

synchronized on SkyDrive directly from Microsoft Project, without leaving the application.

Seavus Project Viewer has the possibility to connect to SkyDrive. Once again, the workflow is identical with the Microsoft's SharePoint workflow. Project plans are created, edited and uploaded on SkyDrive by the project manager and team members using Seavus Project Viewer connect to the SkyDrive and download the project information. Once the project plan is loaded in Seavus Project plan, team member can use all implemented features for better viewing/printing project's assignments.

Import from Google Drive

Google Drive is a file storage with synchronization service, powered by Google, with possibilities for cloud storage, file sharing and collaboration. Users have the possibility to create their own file folder system, defined by their needs. This means that every company can create their own project management storage tree, where the project files will be uploaded and synchronized.

Connecting to Google Drive, Seavus Project Viewer will read and present the folder structure to the user, allowing him to choose which project plan will be selected and opened.

Export In Microsoft® PowerPoint

Microsoft® PowerPoint is used for creating presentations - one use of PowerPoint is to display the key points of a project plan along with all the pertinent information. With our 'export to Microsoft® PowerPoint' feature, Seavus Project Viewer™ is now able to export project plan information directly into Microsoft® PowerPoint. This feature helps teams to create presentations containing key project plan information without having to use Microsoft® Project.

Supported Views

The following standard views, available by default in Microsoft® Project, are supported by the Seavus Project Viewer™:

- Calendar
- Bar Rollup
- Detail Gantt
- Gantt Chart
- Leveling Gantt

- Milestone Date Rollup
- Milestone Rollup
- Multiple Baselines Gantt
- Task Entry
- Task Form
- Task Details Form
- Task Name Form
- Tracking Gantt
- Timeline
- Network Diagram
- Descriptive Network Diagram
- Task Sheet
- Task Usage
- Relationship Diagram
- Resource Graph
- Resource Sheet
- Resource Usage
- Resource Form
- Resource Name form
- Resource Allocation
- Team Planner

In addition to the standard views, Seavus Project Viewer™ is capable to work with user-defined views, i.e. the views that the project manager have created in Microsoft® Project and saved in the project plan, i.e. the .mpp file. Seavus Project Viewer™ supports user-defined views of the

- Gantt chart views
- Network diagram views
- Task sheet views
- Task usage views
- Relationship diagram views
- Resource graph views
- Resource sheet views
- Resource usage views

Finally, the presentation of the views in Seavus Project Viewer™ fully matches Microsoft® Project views, providing the same display of the project information to any

project stakeholder using Seavus Project Viewer™, as the display available to the project managers working in Microsoft® Project.

Seavus Charts

Seavus Charts are views that are characterized with numerical and functional representation of the project information. They are very useful when users need to analyze large quantities of project data or to identify the relationships that exist between different parts of the project.

The following Chart views are supported by the Seavus Project Viewer™:

- Bar Chart
- Bar Chart Stacked
- Line Chart
- Line Chart Stacked
- Pie Chart

For example, if you choose a Bar Chart, the information is presented with rectangular forms, in the pie chart category the data is proportional with the area defined with the radius of the pie and the arc and in the line chart the information is presented with data points connected with line.

Supported Reports

The following standard views, available by default in Microsoft® Project, are supported by the Seavus Project Viewer™:

- Overview:
 - Project Summary
 - Top Level Tasks
 - Critical Tasks
 - Milestones
 - Working Days
- Current Activities
 - Unstarted Tasks
 - Tasks Starting Soon
 - Tasks In Progress
 - Completed Tasks
 - Should Have Started Tasks
 - Slipping Tasks

- Costs
 - Cash Flow
 - Budget Report
 - Overbudget Tasks
 - Overbudget Resources
 - Earned Value
- Assignments
 - Who Does What
 - Who Does What When
 - To Do List
 - Overallocated Resources
- Workload
 - Task Usage
 - Resource Usage
- Custom
 - Crosstab
 - Resource
 - Resource (material)
 - Resource (work)
 - Resource Usage (material)
 - Resource Usage (work)
 - Task

Tables, Filters and Groups

Seavus Project Viewer™ supports all standard task and resource tables, filters, and groups, available by default in Microsoft® Project.

In addition to the standard tables, filters, and groups, Seavus Project Viewer™ supports any user-defined task and resource tables, filters, and groups.

In Seavus Project Viewer™, you can also create your own task and resource tables, or manipulate the table fields directly in the active view.

Finally, Seavus Project Viewer™ lets you make your own filters using the AutoFilter functionality.

Custom Fields

Microsoft® Project provides a set of custom fields that allows project managers to save information that is unique to a project plan.

Using these custom fields, the .mpp file becomes a data repository for the project. Project managers can save that data using one or all of the following categories:

- Cost
- Date
- Duration
- Finish
- Number
- Start
- Text

Seavus Project Viewer™ has the ability to read and display this information from within the .mpp file.

Enterprise Custom Fields

Seavus Project Viewer™ besides presenting the standard columns now supports displaying Enterprise custom fields from Enterprise Projects imported from Project Server 2007.

The Following fields are supported:

- Enterprise Project Text
- Enterprise Project Cost
- Enterprise Project Duration
- Enterprise Project Date
- Enterprise Project Number
- Enterprise Project Flag

Custom Forms

Custom Forms will help you get the information you need in very short period of time. Instead of switching from one view to another, or inserting columns or selecting the appropriate tables for the specific category, the Custom Forms feature will display the information you need to see immediately.

Seavus Project Viewer™ supports the following Custom Forms:

- Entry – presents the main task information.
- Cost Tracking – presents task information associated with the costs of the task.

- Work Tracking – presents task information on associated with the work that is to be performed on that task.
- Schedule Tracking – presents task information and highlights the scheduled parameters for every task.
- Task Relationship – presents the task’s predecessors and successors.
- Tracking – presents information about the task at any given point in time.

Save My Settings – User Profile

Seavus Project Viewer™ provides the user with the ability to format and display project plan information in a way that is most appropriate for his\her work. The user can adjust the timescale, set up a particular view or set of views in the Resource Usage and Task Usage view and/or can insert/hide columns in the views from the Gantt Chart family so that the end result is a custom view of all project plan information in a format that works best for the user.

Depending upon how the user wishes to work with this functionality, these local settings can be loaded every time a user opens an .mpp file or for particular project plan.

Change Language Within The Application

This is new feature that became available in Seavus Project Viewer™ from version 4.1 build 6610. Now, the option for choosing the application language has been removed from the installation steps and placed within the application – *Tools* menu, *Language* option.

With this feature the need of reinstalling the application in order to change the application language has been avoided. You can now switch the application language by simple click on the desired language and restarting the application.

There are ten available languages: English (default), German, French, Spanish, Dutch, Czech, Russian, Italian, Japanese and Chinese (Simplified).

Advanced Search Option

Seavus Project Viewer™ has an advanced search option that enables users to browse different names or terms in task and/or resource columns. User has several search options that allow quick searching of the desired name/term. Whether the searched name/term belongs to the task or resource part of the project plan (or both), the result

can be presented in the Resource Form view or the Task Form view. Using these forms, user can view detailed information related to the searched name/term.

Import Form Project Server 2013

Starting with version 8.5, Seavus Project Viewer™ can open project plans published on Microsoft® Project Server 2013. Using simple interface, user can connect to the Project Server 2013 using its credentials and open the necessary project plan. With this powerful feature, Seavus Project Viewer™ can be used as viewer not only for .mpp files, but also for project plans created in the EPM 2013 environment.

Seavus Project Viewer™ Task Update

With Task Update option in Seavus Project Viewer™ the users now have the ability to collaborate with project managers so they will have up-to-date information about the current status of the project tasks and track if all assignments in the project plan are finished on time.

Team members that are using Seavus Project Viewer™ and Project Managers using Microsoft Project for collaboration need only shared folder on which the project files will be saved and Seavus Add-in for MS Project on Project Manager's side.

Seavus Project Viewer™ Task Update can help companies to decrease their costs, easily track their projects, have better overview of their projects and avoid useless e-mail communication between project manager and team members.

Seavus Project Search

Seavus Project Search is tool for searching a text inside project files created in Microsoft Project (MPP files), stored locally on your PC.

It operates like most of the known desktop search applications and increases the ability to accurately locate information within MPP files. Seavus Project Search is a standalone application which can be installed together with Seavus Project Viewer™ and acts as a meta-search engine for full-text search engines like Windows Desktop Search and Google Desktop Search.

Performance

Seavus Project Viewer™ is a light weight, yet powerful application that does not require a lot of memory, and still has amazing characteristics when opening .mpp files:

- Files up to 1 MB in less than 3 sec.
- Files up to 10 MB in less than 20 sec.

In addition, Seavus Project Viewer™ supports large .mpp files up to 10 GB.

The above specifications and limits are supported when you run Seavus Project Viewer™ on Microsoft Windows 2000 Professional SP3, Windows XP SP1, Windows Vista or Windows 7 (as a minimum software requirement), although actual limits and performance speed depend on your computer's configuration. Note that out of memory errors may occur before you reach the listed limits.

Improved Relationship With Customers

The new version of Seavus Project Viewer™ includes several new features that bring Seavus Project Viewer™ closer to the customers. If a user experiences a problem with the software, he or she can e-mail Seavus support department directly from the application or start a chat with a support officer. Another addition is that users are now directly involved in the implementation of the new features of the Seavus Project Viewer™ by sending their proposals, suggestions or comments from a dialog form inside Seavus Project Viewer™.

Chapter 3: Detailed Feature List

In this section you will learn:

- ✓ Detailed features of the entire application

General Features

Table 1. General Features in Seavus Project Viewer™

Feature	Description
Application type	Stand-alone desktop application that does not require previous installation of Microsoft® Project on the machine.
Supported file format	MPP (native Microsoft® Project file format), saved in, Microsoft® Project 2003, Microsoft® Project 2007, Microsoft® Project 2010 and Microsoft® Project 2013); MPD (Microsoft Project Database); SSV (Seavus Secure View file format); XML (Extensible Markup Language), MPX (Microsoft Project Exchange), MDB (native Microsoft Access® file format)
User interface	Similar to Microsoft® Office Project 2007, Similar to Microsoft® Office Project 2010 and Microsoft® Office Project 2013
Views	<p><u>Task</u>: Calendar, Bar Rollup, Detail Gantt, Gantt Chart, Leveling Gantt, Milestone Date Rollup, Milestone Rollup, Multiple Baselines Gantt, Tracking Gantt, Network Diagram, Descriptive Network Diagram, Task Sheet, Relationship Diagram, Timeline, Task Form, Task Name Form, Task Details Form</p> <p><u>Resource</u>: Resource Graph, Resource Sheet, Team Planner, Resource Form, Resource Name Form</p> <p><u>Assignment</u>: Task Usage, Resource Usage.</p> <p>In addition, Seavus Project Viewer™ supports any custom-created Gantt Chart, Network Diagram, Task Sheet, Task Usage, Relationship diagram, Resource Graph, Resource Sheet, and Resource Usage view.</p>
Reports	<p><u>Overview</u>: Project Summary, Top Level Tasks, Critical Tasks, Milestones, Working Days</p> <p><u>Current Activities</u>: Unstarted Tasks, Tasks Starting Soon, Tasks In Progress, Completed Tasks, Should Have Started Tasks, Slipping Tasks</p> <p><u>Costs</u>: Cash Flow, Budget Report, Overbudget Tasks, Overbudget Resources, Earned Value</p>

	<p><u>Assignments</u>: Who Does What, Who Does What When, To Do List, Overallocated Resources</p> <p><u>Workload</u>: Task Usage, Resource Usage</p> <p><u>Custom</u>: Crosstab, Resource, Resource (material), Resource (work), Resource Usage (material), Resource Usage (work), Task</p>
Tables	<p><u>Task</u>: Baseline, Constraint Dates, Cost, Delay, Earned Value, Earned Value Cost Indicators, Earned Value Schedule Indicators, Entry, Export, Hyperlink, Rollup Table, Schedule, Summary, Tracking, Usage, Variance, Work</p> <p><u>Resource</u>: Cost, Earned Value, Entry, Entry – Material Resources, Entry – Work Resources, Export, Hyperlink, Summary, Usage, Work</p> <p>In addition, Seavus Project Viewer™ supports any custom-created task or resource table.</p>
Filters	<p><u>Task</u>: Active Tasks, Completed Tasks, Cost Greater Than..., Cost Overbudget, Created After..., Critical, Date Range..., In Progress Tasks, Incomplete Tasks, Late Tasks, Late/Overbudget Tasks Assigned To..., Linked Fields, Manually Scheduled Tasks, Milestones, Resource Group..., Should Start By..., Should Start/Finish By..., Slipped/Late Progress, Slipping Tasks, Summary Tasks, Task Range..., Tasks With A Task Calendar Assigned, Tasks With Attachments, Tasks With Deadlines, Tasks With Estimated Durations, Tasks With Fixed Dates, Tasks/Assignments With Overtime, Top Level Tasks, Unstarted Tasks, Using Resource In Date Range..., Using Resource..., Work Overbudget</p> <p><u>Resource</u>: Budget Resources, Cost Greater Than..., Cost Overbudget, Created After..., Date Range..., Group..., In Progress Assignment, Linked Fields, Non-budget Resources, Overallocated Resources, Resource Range..., Resources – Material, Resources – Work, Resources With Attachments, Resources/Assignments With Overtime, Should Start By..., Should Start/Finish By..., Slipped/Late Progress, Slipping Assignments, Unstarted Assignments, Work Complete, Work Incomplete, Work Overbudget</p> <p>In addition, Seavus Project Viewer™ supports any custom-created task or resource filter.</p>
Groups	<p><u>Task</u>: Active v. Inactive, Auto Scheduled v. Manually Scheduled, Complete and Incomplete Tasks, Constraint Type, Critical, Duration, Duration then Priority, Milestones, Priority, Priority Keeping Outline Structure, Resource, Status</p> <p><u>Resource</u>: Assignmet Keeping Outline Structure, Complete and Incomplete Resources, Resource Group, Standard Rate, Work vs. Material Resources</p> <p>In addition, Seavus Project Viewer™ supports any custom-created task or resource group.</p>
Printing	<p>Complete support for printing, along with print preview and page setup options for all views and reports.</p> <p>Page Setup dialog options:</p> <ul style="list-style-type: none"> ● Page settings: orientation, scaling (adjust to N% normal size, or fit to N pages wide by M pages tall), paper size ● Margin settings: margin settings, page borders

	<ul style="list-style-type: none"> ● Header settings: choose the type of header (file or custom), option for selecting the font, size and color of the text, possibility for entering image in the header, alignment of the text. ● Footer settings: choose the type of footer (file or custom), option for selecting the font, size and color of the text, possibility for entering image in the header, alignment of the text. ● View settings (gantt or sheet views): print all sheet columns, print first N columns on all pages, print blank pages, legend options, print notes ● View settings (calendar view): months per page, only show days in month, only show weeks in month, weeks per page, week height as on screen
Outlining	Complete support for outlining options and outlining functionality, like show the outline symbol and number, choose an outline level to automatically expand or hide the tasks at the chosen level, etc
Sorting	<u>Task</u> : by Start Date, by Finish Date, by Priority, by Cost, by ID, including custom "Sort by" functionality <u>Resource</u> : by Cost, by Name, by ID, including custom "Sort by" functionality
Find & Go To	Complete support for searching through any task or resource fields and all comparison options as in Microsoft® Project. Go To functionality supports positioning directly to a task (by ID), to a location on the timeline (by date), or at the start/end of the selected task (clicking on the task in the table).
Zoom & sizing	Complete support for Zoom in and Zoom out features, as well as Zoom To option for specifying resolution in days, weeks, or months, or the whole project. In addition, any table, including the timeline header in the chart views, can be resized by dragging the row/column/tier separator in the desired direction. Finally, table columns can be auto-sized to adjust to the contents of the field by double-clicking on the column separator.
Drawing objects & hyperlinks	Complete support for drawing objects attached to a task or a timeline in the Gantt Chart views. Complete support for hyperlinks attached to a task, and options to open the hyperlink or add it to the favorites list.
Information dialogs	Seavus Project Viewer™ implements the following information dialogs: <ul style="list-style-type: none"> ● Project Information (and Project Statistics) ● Task Information (including summary tasks, inserted projects and recurring tasks) ● Resource Information ● Assignment information
Document Properties	The following tabs of the Document properties are implemented in Seavus Project Viewer™: <ul style="list-style-type: none"> ● General ● Summary ● Statistic ● Content

Program options	The following configuration options can be changed in Seavus Project Viewer™: <ul style="list-style-type: none"> • Date format (for displaying dates) • Currency options (symbol, decimal digits, and placement) • Outline options (indent name, show outline symbol, and show outline number) • View options for time units (labels for minutes, hours, days, week, months, and years, add space before label, show that tasks have estimated durations, display time unit for duration and work fields) • The path to the global template file
Shared resource pools	Complete support for projects using shared resource pools.
Master projects, subprojects & external tasks	Complete support for master projects containing inserted projects, as well as subprojects with external dependencies, i.e. external tasks.
Importing	Support for importing project plan from Microsoft® Excel, created in special Microsoft® Excel template and from Microsoft® Outlook
Exporting	Support for exporting the active view information in Microsoft® Excel XML Spreadsheet format and CSV format and project plan in Microsoft® Outlook. In addition, the user can export the project plan in the HTML, HyperText Markup Language format or in into Microsoft PowerPoint®..
Global template	Support for a global template, similar to Global.mpt in Microsoft® Project, used to identify the default views, calendars, tables, filters, and groups available in any project opened in Seavus Project Viewer™.
Combined views	Support for creating combined views in Seavus Project Viewer™ by splitting the window in two panes, each containing a different view, where the bottom pane view shows detailed information about the tasks or resources in the top pane view
Password protected files	Support for opening project plans that are password protected
Online help	An extensive and modern help manual, integrated with the application. It provides reference information for the features, along with overviews and best use scenarios for using a particular view or functionality.
Send to	Complete support for sending the project plan to other participants in the project team trough Microsoft® Outlook. Also, it provides option for sending pictures of the tasks and sending task as scheduled notes to the other team members.
Live Update	A Live Update system, which ensures the application is kept up to date with all new features and updates.

Gantt Chart Views

Table 2. Available features in Gantt Chart views

Feature	Description
Supported views	The standard Bar Rollup, Detail Gantt, Gantt Chart, Leveling Gantt, Milestone Date Rollup, Milestone Rollup, Multiple Baselines Gantt, and Tracking Gantt views

	In addition, Seavus Project Viewer™ supports any custom-created Gantt Chart views
Tables	All task tables
Filters	All task filters
Groups	All task groups
Layout options	Complete support for all Layout options. In addition, the user can change the following layout options for the active view: <ul style="list-style-type: none"> • Link style • Bar date format • “Always roll up Gantt bars” setting • “Hide rollup bars when summary expanded”
Font formatting	Complete support for editing the font options for the different text styles, as well as the specific formatting for each row, column, or cell in the table
Bar styles & formatting	Complete support for all bar styles options, as well as the specific formatting for each particular bar in the chart
Text styles & formatting	Complete support for the font options for the different text styles, as well as the specific formatting for each row, column, or cell in the table
Progress Lines	Complete support for all progress lines options and formatting. In addition, the user can change all progress lines options and formatting, including removing or adding progress lines in the active view
Timescale formatting	Complete support for all timescale options and formatting, including support for one, two or three tiers, and non-working time settings. In addition, the user can change any of the timescale options for the active view
Gridlines formatting	Complete support for all gridlines formatting options.

Network Diagram Views

Table 3. Available features in Network Diagrams views

Feature	Description
Supported views	The standard Network Diagram, and Descriptive Network Diagram views. In addition, Seavus Project Viewer™ supports any custom-created Network Diagram views
Tables	Not used.
Filters	All task filters.
Groups	Not supported
Layout options	Complete support for all Layout options.
Box styles & formatting	Complete support for all box styles options, as well as the specific formatting for each particular box on the flowchart.
Data templates	Complete support for all data templates and their options.

Timeline View

Table 4. Available features in Timeline view

Feature	Description
Supported views	The standard Timeline view. In addition, Seavus Project Viewer™ supports any custom-created Timeline view
Tables	Not used
Filters	Not used
Groups	Not used
Bar styles	Complete support for all bar styles options for each detail field
Text styles	Complete support for the font options for the different text styles.
Timescale formatting	Not used
Gridlines formatting	Complete support for all gridlines formatting options.

Team Planner View

Table 5. Available features in Team Planner view

Feature	Description
Supported views	The standard Team Planner view. In addition, Seavus Project Viewer™ supports any custom-created Team Planner view
Tables	Not used
Filters	All resource filters
Groups	All resource groups
Bar styles	Complete support for all bar styles options for each detail field
Text styles	Complete support for the font options for the different text styles.
Timescale formatting	Complete support for all timescale options and formatting, including support for one, two or three tiers, and non-working time settings. In addition, the user can change any of the timescale options for the active view
Gridlines formatting	Complete support for all gridlines formatting options.

Calendar Views

Table 6. Available features in Calendar views

Feature	Description
Supported views	The standard Calendar view
Tables	Not used
Filters	All task filters
Groups	Not used
Bar styles	This view does not support the bar styles options from the .mpp file

Text styles	This view does not support the text styles options from the .mpp file
Timescale formatting	This view does not support the timescale formatting options from the .mpp file
Gridlines formatting	This view does not support the gridlines formatting options from the .mpp file

Resource Graph Views

Table 7. Available features in Resource Graph views

Feature	Description
Supported views	The standard Resource Graph view. In addition, Seavus Project Viewer™ supports any custom-created Resource Graph view
Details	Peak Units, Work, Cumulative Work, Overallocation, Percent allocation, Remaining Availability, Cost, Cumulative Cost, Work Availability, Unit Availability
Tables	Not used
Filters	All resource filters
Groups	Not used
Bar styles	Complete support for all bar styles options for each detail field
Text styles	Complete support for the font options for the different text styles.
Timescale formatting	Complete support for all timescale options and formatting, including support for one, two or three tiers, and non-working time settings. In addition, the user can change any of the timescale options for the active view
Gridlines formatting	Complete support for all gridlines formatting options.

Task Sheet Views

Table 8. Available features in Task Sheet views

Feature	Description
Supported views	The standard Task Sheet view. In addition, Seavus Project Viewer™ supports any custom-created Task Sheet views
Tables	All task tables
Filters	All task filters
Groups	All task groups
Text styles & formatting	Complete support for the font options for the different text styles, as well as the specific formatting for each row, column, or cell in the table
Gridlines formatting	Complete support for all gridlines formatting options.

Resource Sheet Views

Table 9. Available features in Resource Sheet views

Feature	Description
Supported views	The standard Resource Sheet view. In addition, Seavus Project Viewer™ supports any custom-created Resource Sheet views
Tables	All resource tables
Filters	All resource filters
Groups	All resource groups
Text styles & formatting	Complete support for the font options for the different text styles, as well as the specific formatting for each row, column, or cell in the table
Gridlines formatting	Complete support for all gridlines formatting options.

Task Usage Views

Table 10. Available features in Task Usage views

Feature	Description
Supported views	The standard Task Usage view
Details	Actual Cost, Actual Overtime Work, Actual Work, ACWP, Baseline Cost, Baseline Work, Baseline1-10 Cost, Baseline1-10 Work, BCWP, BCWS, Cost, CV, Fixed Cost, Physical Percent (%) Complete, Percent (%) Complete, Regular Work, SV, Work
Tables	All task tables
Filters	All task filters
Groups	Not supported
Detail styles	Complete support for all detail styles options. In addition, the user can change the following detail options for the detail fields: <ul style="list-style-type: none"> ● Font ● Cell background ● Pattern ● "Show in menu" option
Text styles & formatting	Complete support for the font options for the different text styles, as well as the specific formatting for each row, column, or cell in the table
Timescale formatting	Complete support for all timescale options and formatting, including support for one, two or three tiers, and non-working time settings. In addition, the user can change any of the timescale options for the active view
Gridlines formatting	Complete support for all gridlines formatting options.

Resource Usage Views

Table 11. Available features in Resource Usage views

Feature	Description
Supported views	The standard Resource Usage view
Details	Actual Cost, Actual Overtime Work, Actual Work, ACWP, Baseline Cost, Baseline Work, BCWP, BCWS, Cost, Cumulative Cost, Cumulative Work, Overallocation, Overtime Work, Peak, Percentage Allocation, Regular Work, Work Availability, SV, Max Units, Work, Remaining Availability
Tables	All resource tables
Filters	All resource filters
Groups	Not supported
Detail styles	Complete support for all detail styles options. In addition, the user can change the following detail options for the detail fields: <ul style="list-style-type: none"> • Font • Cell background • Pattern • "Show in menu" option
Text styles & formatting	Complete support for the font options for the different text styles, as well as the specific formatting for each row, column, or cell in the table
Timescale formatting	Complete support for all timescale options and formatting, including support for one, two or three tiers, and non-working time settings. In addition, the user can change any of the timescale options for the active view
Gridlines formatting	Complete support for all gridlines formatting options.

Relationship Diagram

Table 12. Available features in Relationship Diagram views

Feature	Description
Supported views	The standard Relationship diagram view
Tables	Not used
Filters	All task filters
Groups	Not used
Layout options	Not used
Box styles & formatting	Not used
Data templates	Not used

Bar Chart

Table 13. Available features in Bar Chart view

Feature	Description
Supported view	Custom created view by Seavus

Details (Task)	Actual Cost, Cost, Cumulative Cost, Actual Work, Regular Work, Work, Cumulative Work
Details (Resource)	Actual Work, Work, Cumulative Work, Actual Overtime Work, Regular Work, Work Availability, Remaining Work, Over-allocation, Cost, Actual Cost, Cumulative Cost, Max. Units, Peak, Percent Allocation, Over-allocated
Tables	Not used
Filters	Not used
Groups	Not used
Bar styles	Supported only predefined bar style
Text styles	Supported only predefined text style

Bar Chart Stacked

Table 14. Available features in Bar Chart Stacked view

Feature	Description
Supported view	Custom created view by Seavus
Details (Task)	Actual Cost, Cost, Cumulative Cost, Actual Work, Regular Work, Work, Cumulative Work
Details (Resource)	Actual Work, Work, Cumulative Work, Actual Overtime Work, Regular Work, Work Availability, Remaining Work, Over-allocation, Cost, Actual Cost, Cumulative Cost, Max. Units, Peak, Percent Allocation, Over-allocated
Tables	Not used
Filters	Not used
Groups	Not used
Bar styles	Supported only predefined bar style
Text styles	Supported only predefined text style

Line Chart

Table 15. Available features in Line Chart

Feature	Description
Supported view	Custom created view by Seavus
Details (Task)	Actual Cost, Cost, Cumulative Cost, Actual Work, Regular Work, Work, Cumulative Work
Details (Resource)	Actual Work, Work, Cumulative Work, Actual Overtime Work, Regular Work, Work Availability, Remaining Work, Over-allocation, Cost, Actual Cost, Cumulative Cost, Max. Units, Peak, Percent Allocation, Over-allocated
Tables	Not used
Filters	Not used
Groups	Not used
Bar styles	Supported only predefined bar style
Text styles	Supported only predefined text style

Line Chart Stacked

Table 16. Available features in Line Chart Stacked view

Feature	Description
Supported view	Custom created view by Seavus
Details (Task)	Actual Cost, Cost, Cumulative Cost, Actual Work, Regular Work, Work, Cumulative Work
Details (Resource)	Actual Work, Work, Cumulative Work, Actual Overtime Work, Regular Work, Work Availability, Remaining Work, Over-allocation, Cost, Actual Cost, Cumulative Cost, Max. Units, Peak, Percent Allocation, Over-allocated
Tables	Not used
Filters	Not used
Groups	Not used
Bar styles	Supported only predefined bar style
Text styles	Supported only predefined text style

Pie Chart

Table 17. Available features in Pie Chart view

Feature	Description
Supported view	Custom created view by Seavus
Details (Task)	Actual Cost, Cost, Cumulative Cost, Actual Work, Regular Work, Work, Cumulative Work
Details (Resource)	Actual Work, Work, Cumulative Work, Actual Overtime Work, Regular Work, Work Availability, Remaining Work, Over-allocation, Cost, Actual Cost, Cumulative Cost, Max. Units, Peak, Percent Allocation, Over-allocated
Tables	Not used
Filters	Not used
Groups	Not used
Bar styles	Supported only predefined bar style
Text styles	Supported only predefined text style

Task Entry View

Table 18. Available features in Task Entry view

Feature	Description
Supported view	Custom created view by Seavus
Details (Task)	Actual Cost, Cost, Cumulative Cost, Actual Work, Regular Work, Work, Cumulative Work
Details (Resource)	Actual Work, Work, Cumulative Work, Actual Overtime Work, Regular Work, Work Availability, Remaining Work, Over-allocation, Cost, Actual Cost, Cumulative Cost, Max. Units, Peak, Percent Allocation, Over-allocated
Tables	Not used
Filters	Not used

Groups	Not used
Bar styles	Supported only predefined bar style
Text styles	Supported only predefined text style

Task Form View

Table 19. Available features in Task Form view

Feature	Description
Supported views	Combination of two views: Gantt chart in the top pane and Task Form view in the bottom pane.
Tables	Not Used
Filters	All task filters
Groups	Not Used
Text styles & formatting	Not Used
Gridlines formatting	Not Used

Task Details Form View

Table 20. Available features in Task Details Form view

Feature	Description
Supported views	Combination of two views: Gantt chart in the top pane and Task Form view in the bottom pane.
Tables	Not Used
Filters	All task filters
Groups	Not Used
Text styles & formatting	Not Used
Gridlines formatting	Not Used

Task Name Form View

Table 21. Available features in Task Name Form view

Feature	Description
Supported views	Combination of two views: Gantt chart in the top pane and Task Form view in the bottom pane.
Tables	Not Used
Filters	All task filters
Groups	Not Used
Text styles & formatting	Not Used
Gridlines formatting	Not Used

Resource Form View

Table 22. Available features in Resource Form view

Feature	Description
Supported Views	Standard Resource Form and combination of two views: Resource Sheet or Resource Usage view in the top pane and Resource Form view in the bottom pane.
Tables	Not used.
Filters	All resource filters.
Groups	Not used.
Text Styles and Formatting	Not used.
Gridlines formatting	Not used.

Resource Name Form view

Table 23. Available features in Resource Name Form view

Feature	Description
Supported Views	Standard Resource Form and combination of two views: Resource Sheet or Resource Usage view in the top pane and Resource Form view in the bottom pane.
Tables	Not used.
Filters	All resource filters.
Groups	Not used.
Text Styles and Formatting	Not used.
Gridlines formatting	Not used.

Resource Allocation

Table 24. Available features in Resource Allocation view

Feature	Description
Supported Views	Combination of two views: Resource Usage view in the top pane and Gantt Chart view in the bottom pane.
Tables	All task/resource tables.
Filters	All task/resource filters.
Groups	All task/resource groups
Text Styles and Formatting	Complete support for the font options for the different text styles, as well as the specific formatting for each row, column, or cell in the table
Gridlines formatting	Complete support for all gridlines formatting options.

Fields

Table 25. Available fields in Seavus Project Viewer™

Feature	Description
Task fields	% Complete, % Work Complete, Actual Cost, Actual Duration, Actual Finish, Actual Overtime Cost, Actual Overtime Work, Actual Start, Actual Work, ACWP, Assignment, Assignment Delay, Assignment Units, Baseline Budget Cost, Baseline Budget Work, Baseline Cost, Baseline Deliverable Finish, Baseline Deliverable Start, Baseline Duration, Baseline Estimated Duration, Baseline Estimated Finish, Baseline Estimated Start, Baseline Finish, Baseline Fixed Costs, Baseline Fixed Costs Accrual, Baseline Start, Baseline Work, Baseline1-10 Cost, Baseline1-10 Deliverable Finish, Baseline1-10 Deliverable Start, Baseline1-10 Duration, Baseline1-10 Estimated Duration, Baseline1-10 Estimated Finish, Baseline1-10 Estimated Start, Baseline1-10 Finish, Baseline1-10 Fixed Costs, Baseline1-10 Fixed Costs Accrual, Baseline1-10 Start, Baseline1-10 Work, BCWP, BCWS, Budget Cost, Budget Work, Confirmed, Constraint Date, Constraint Type, Contact, Cost, Cost Rate Table, Cost Variance, Cost1-10, CPI, Created, Critical, CV, CV%, Date1-10, Deadline, Duration, Duration Variance, Duration1-10, EAC, Early Finish, Early Start, Effort Driven, Estimated, External Task, Finish, Finish Slack, Finish Variance, Finish1-10, Fixed Cost, Fixed Cost Accrual, Flag1-20, Free Slack, Group By Summary, Hide Bar, Hyperlink, Hyperlink Address, Hyperlink Href, Hyperlink SubAddress, ID, Ignore Resource Calendar, Indicators, Late Finish, Late Start, Level Assignments, Leveling Can Split, Leveling Delay, Linked Fields, Marked, Milestone, Name, Notes, Number1-20, Objects, Outline Code1-10, Outline Level, Outline Number, Overallocated, Overtime Cost, Overtime Work, Peak, Physical % Complete, Predecessors, Preleveled Finish, Preleveled Start, Priority, Project, Recurring, Regular Work, Remaining Cost, Remaining Duration, Remaining Overtime Cost, Remaining Overtime Work, Remaining Work, Resource Group, Resource Initials, Resource Names, Resource Phonetics, Response Pending, Resume, Rollup, Scheduled Duration, Scheduled Finish, Scheduled Start, SPI, Start, Start Slack, Start Variance, Start1-10, Status, Status Indicator, Stop, Subproject File, Subproject Read Only, Successors, Summary, SV, SV%, Task Calendar, TCPI, TeamStatus Pending, Text1-30, Total Slack, Type, Unique ID, Unique ID Predecessors, Unique ID Successors, Update Needed, VAC, WBS, WBS Predecessors, WBS Successors, Work, Work Contour, Work Variance
Resource fields	% Work Complete, Accrue At, Active, Actual Cost, Actual Finish, Actual Overtime Cost, Actual Overtime Work, Actual Start, Actual Work, ACWP, Assignment, Assignment Delay, Assignment Units, Available From, Available To, Baseline Budget Cost, Baseline Budget Work, Baseline Cost, Baseline Duration, Baseline Finish, Baseline Fixed Costs, Baseline Fixed Costs Accrual, Baseline Start, Baseline Work, Baseline1-10 Budget Cost, Baseline1-10 Budget Work, Baseline1-10 Cost, Baseline1-10 Estimated Start, Baseline1-10 Finish, Baseline1-10 Fixed Costs, Baseline1-10 Start, Baseline1-10 Work, BCWP, BCWS, Booking Type, Budget, Budget Cost, Budget Work, Can Level, Code, Confirmed, Cost, Cost1-10, Created, CV, Date1-10, Duration1-10, Finish, Finish1-10, Flag1-20, Generic, Group, Hyperlink, Hyperlink Address, Hyperlink Href, Hyperlink SubAddress, ID,

Import, Inactive, Indicators, Leveling Delay, Linked Fields, Material Label, Max. Units, Name, Notes, Number1-20, Objects, Outline Code1-10, Overallocated, Overtime Cost, Overtime Work, Peak, Project, Regular Work, Remaining Cost, Remaining Overtime Cost, Remaining Overtime Work, Remaining Work, Resource Calendar, Resource Group, Resource Initials, Resource Names, Response Pending, Start, Start1-10, SV, TeamStatus Pending, Text1-30, Type, Unique ID, VAC, WBS, Work, Work Variance

Custom Forms

Table 26. Available Custom Forms in Seavus Project Viewer™

Feature	Description
Entry	<i>Task Information:</i> Name, Duration, Start and Finish Date.
Cost Tracking	<i>Cost Information:</i> Total Cost, Baseline Cost, Variance, Fixed Cost, Actual Cost and Remaining Cost. <i>Task Information:</i> Duration, Work, % Complete and % Work Complete.
Work Tracking	<i>Work Information:</i> Total Work, Actual Work Baseline Work, % Complete, Remaining Work and Variance. <i>Task Information:</i> Task Name, Resource Name, Duration, and % Complete.
Schedule Tracking	<i>Schedule Information:</i> Baseline Start, Schedule Start, Variance, Baseline Finish, Baseline Schedule, Variance. <i>Task Information:</i> Task Name, Resource Name, Duration, and % Complete.
Task Relationship Tracking	Predecessors, Successors. <i>Task Information:</i> Task Name, % Complete, Actual Start, Actual Finish, Start, Finish, Duration and Remaining Work.

Custom Fields

Table 27. Available Custom Fields in Seavus Project Viewer™

Feature	Description
Task fields	Cost: Cost1 - Cost10 Date: Date1-Date10 Duration: Duration1- Duration10 Finish: Finish1- Finish10 Number: Number1 – Number20 Start: Start1 – Start10 Text: Text1- Text30
Resource fields	Text: Text1- Text30

Enterprise Custom Fields

Table 28. Available Enterprise Custom Fields in Seavus Project Viewer™

Feature	Description
---------	-------------

Enterprise fields	Enterprise Project Text Enterprise Project Cost Enterprise Project Duration Enterprise Project Date Enterprise Project Number Enterprise Project Flag
--------------------------	--

Save My Settings – User Profile

Table 29. Available Settings for saving in Seavus Project Viewer™

Feature	Description
Columns	Field Name, Align Title, Align Data, Width, Header Text Wrapping <i>Views:</i> Gantt Chart view, Task Usage view, Tracking Gantt view, Resource Sheet view, Resource Usage view
Timescale	Tiers <ul style="list-style-type: none"> ● Tier Type (Top, Middle, Bottom) ● Units ● Label ● Count ● Align ● Use Fiscal Year ● Tick Lines ● Size ● Show ● Scale Separator Non-Working time <ul style="list-style-type: none"> ● Draw ● Color ● Pattern Align Title <i>Views:</i> Gantt Chart view, Task Usage view, Tracking Gantt view, Resource Graph view, Resource Usage view
Details	Work, Actual Work, Cumulative Work, Baseline Work, Cost, Actual Cost <i>Views:</i> Task Usage, Resource Usage
Sort by	Start, Finish, Priority, Cost, ID <i>Views:</i> Gantt Chart view, Task Usage view, Tracking Gantt view, Leveling Gantt, Bar Rollup view, Task Sheet Cost, Name, ID <i>Views:</i> Resource Sheet, Resource Usage
Filter for	Task filters <i>Views:</i> Gantt Chart view, Task Usage view, Tracking Gantt view, Leveling Gantt, Bar Rollup view, Task Sheet Resource filters <i>Views:</i> Resource Sheet, Resource Usage
Group by	Task Groups

- Complete and Incomplete Tasks
- Constraint Type
- Critical
- Duration
- Duration then Priority
- Milestones
- Priority
- Priority Keeping Outline Structure

Views: Gantt Chart view , Task Usage view, Tracking Gantt view, Leveling Gantt, Bar Rollup view, Task Sheet

Resource Groups

- Complete and Incomplete Resources
- Resource Group
- Standard Rate
- Work vs. Material Resources

Views: Resource Sheet, Resource Usage

Outline	Hide Outline Symbols
----------------	----------------------

Language

Table 30. Available languages in Seavus Project Viewer™

Feature	Description
Language	English (default) German French Dutch Spanish Czech Russian Polish Italian Japanese Chinese (Simplified)

Chapter 4: System Requirements

In this section you will learn:

- ✓ About supported OS

Supported Platforms

Seavus Project Viewer™ is tested and certified to work on the following platforms:

- Microsoft® Windows 2000 Professional
- Microsoft® Windows Server 2000
- Microsoft® Windows XP Home Edition
- Microsoft® Windows XP Professional Edition
- Microsoft® Windows Server 2003
- Microsoft® Windows Vista Home Basic
- Microsoft® Windows Vista Home Premium
- Microsoft® Windows Vista Business
- Microsoft® Windows Vista Enterprise
- Microsoft® Windows Vista Ultimate
- Microsoft® Windows 7 Home Basic
- Microsoft® Windows 7 Home Premium
- Microsoft® Windows 7 Enterprise
- Microsoft® Windows 7 Ultimate
- Microsoft® Windows Server 2008 Standard
- Microsoft® Windows Server 2008 Enterprise
- Microsoft® Windows Server 2008 R2 Standard
- Microsoft® Windows Server 2008 R2 Enterprise
- Microsoft® Windows 8
- Microsoft® Windows 8 Pro

- Microsoft® Windows 8 Enterprise
- Microsoft® Windows 8.1
- Microsoft® Windows 8.1 Pro
- Microsoft® Windows 8.1 Enterprise
- Microsoft® Windows Server 2012

Beside the 32 bit operating systems from Microsoft, the 64 bit versions are supported through the built in Windows on Windows64 (WOW64) compatibility layer of the operating system.

Hardware Requirements

- Intel® Pentium II® or Pentium-grade processor, Celeron Processor or Athlon Processor.
- Minimum of 512 MB RAM (higher recommended)
- Disk space required: 50 megabytes
- Super VGA display (with the screen resolution set to at least 800 x 600)

Seavus DOOEL
11 Oktomvri 33A
1000 Skopje, Macedonia
Phone: + 389 2 3253 606
Email: support@seavusprojectviewer.com
URL: www.seavusprojectviewer.com

All documents prepared or furnished by Seavus DOOEL and the copyright therein shall remain the property of Seavus DOOEL.
Photo: Foto Spring