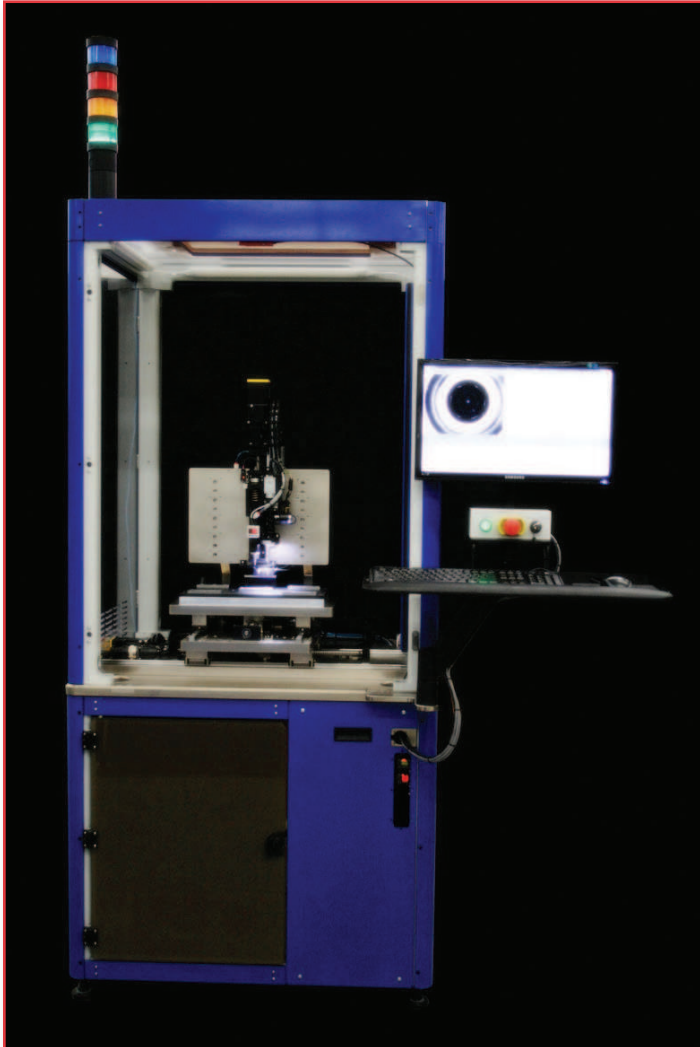




microPEM® Installation Tools

NEW

Designed and developed for high volume, low cost installation of microPEM® fasteners



Specifications

Overall	36" x 36" x 80"H / 91.44cm x 91.44cm x 203.2cm
Work deck	9" x 14" / 22.86cm x 35.56cm
Tool weight (in KP110)	1,250 lbs. / 567kg
Electrical Requirements	120/208 VAC 50/60Hz 10A

Machine Capabilities

- ▶ Tooling available for all microPEM® fastener products.
- ▶ Single or dual head configurations.
 - Max speed = 1 second cycle (dual head version)
 - Max speed = 2 second cycle (single head version)
- ▶ Manual tending of fastener presentation plates and products.
- ▶ Automatic tending as an option.

Standard Features

Flexibility

- ▶ Accommodates full line of microPEM® fasteners with simple tooling change.
- ▶ Large work deck can accommodate one large or multiple small products.
- ▶ Array of threaded tooling attachment points on work deck.
- ▶ Adjustable head Z height.
- ▶ microPEM® fastener presented on deck.

Process Quality

- ▶ Pre and post install vision inspection.
- ▶ Integrated install force monitoring, utilizing microPEM® force algorithms.

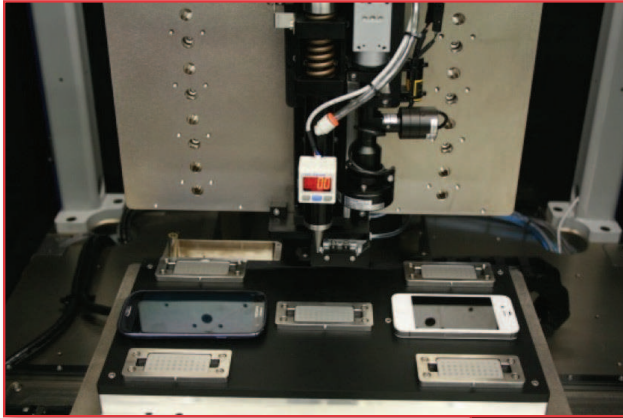
Safety

- ▶ Tamper proof, enclosed work area.
- ▶ Industrial grade tool chassis.
- ▶ Integrated safety circuits.

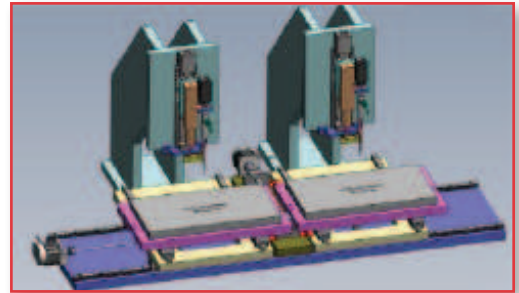
Korvis

microPEM® Installation Tools

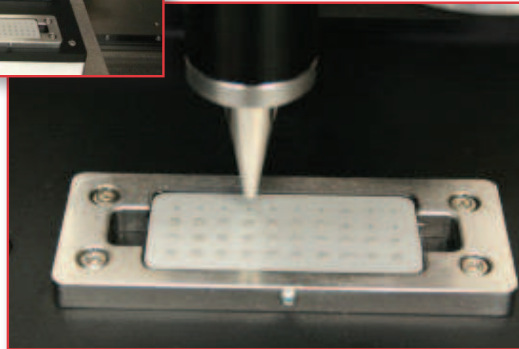
NEW



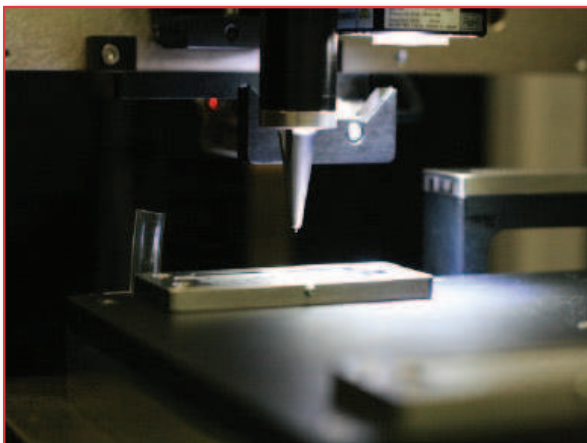
Large deck for work mounting.



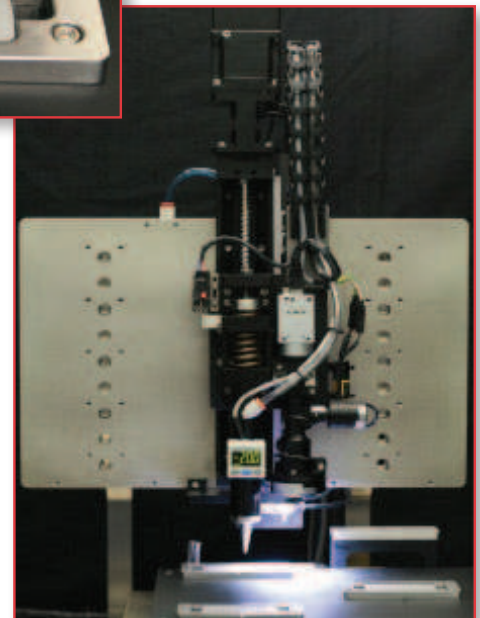
*High capacity,
dual head option*



Representative work holding fixture.



Finding the precise location of the fastener hole.



Shown without shroud for clarity.

For quotation, call 541-738-4360
or email sales@korvis.com

 Korvis

2101 NE Jack London Street,
Corvallis, OR 97330 USA