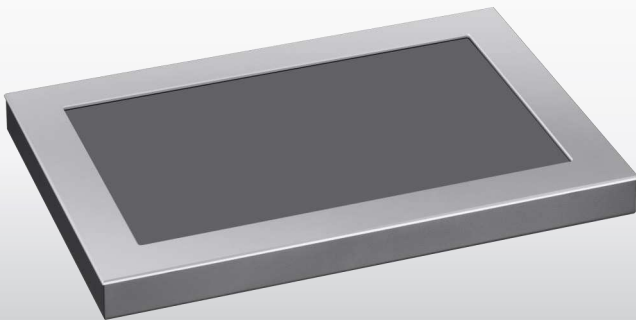




# 15" Touch Panel VisuDomus® Series



## KEY FEATURES

- Intel® Atom™ Z530 with 1.1 or 1.6 GHz
- Intel® System Controller Hub US15W
- Up to 2GB DDR2-533
- Up to 16GB Compact Flash memory card
- 15.4" TFT LCD WXGA (1280 x 800 pixels)
- LED backlight
- 5-wire resistive touch screen
- Ethernet Gigabit connected via RJ45 or LSA patch panel
- USB Host 2.0 high-speed
- Fanless system
- Built-in speakers (optional)



## DESCRIPTION

DH electronics VisuDomus® touch PC is a general-purpose embedded computer equipped with display and touch. It was designed for maximum uptime and reliability to meet the demanding needs of automation systems. The elegant design and a very slim housing round up the impressive physical appearance.



## HIGHLIGHTS

- Slim and elegant design
- High-quality optics with different front variations made of glass or aluminium
- Energy-saving device design
- Optimized for building & industrial automation



## TECHNICAL DETAILS

|                          |                               |
|--------------------------|-------------------------------|
| <b>Article number:</b>   | DHCP-154R-01VD                |
| <b>Power supply:</b>     | 16 - 24 VDC (+/- 10%)         |
| <b>Power usage:</b>      | typ. 19 W                     |
| <b>Operating system:</b> | Microsoft Windows XP embedded |
| <b>Dimensions:</b>       | 407.2 mm x 283.0 mm x 32 mm   |