

CMF Series



The CMF series is a type of common mode filter designed and produced using the multilayer technology. The multilayer construction allows for excellent noise suppression for signal lines used in high-speed and high-density digital equipment such as personal computers, facsimiles, DSC, STB, etc. Both standard series and custom-design products are available.

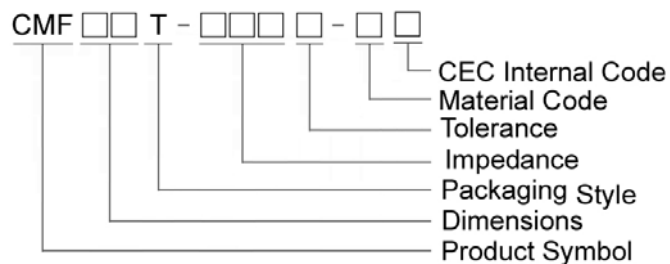
Features

- Multilayer construction for effective suppression of common mode noise at high frequency
- Excellent solderability
- Compact design

Applications

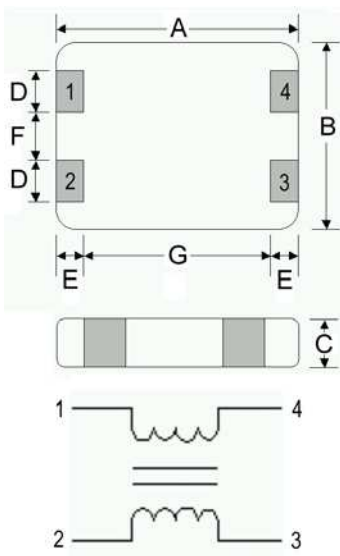
- High speed interfaces (IEEE1394, USB2.0, and LVDS) in electronic devices
- PDP, LCD TV, DVD player, PC, Audio player, DSC
- Digital audio and video equipment such as PDAs, DVC, CD player, MD player, etc.

Product Identification

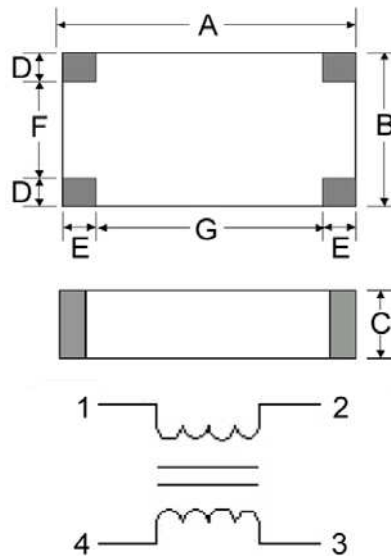


Shape and Dimensions

CMF11



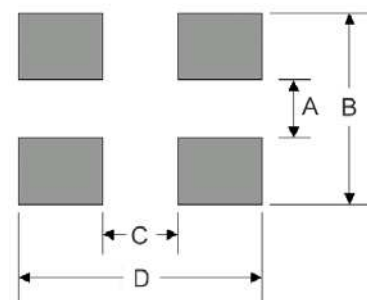
CMF21



Dimensions in mm

TYPE	A	B	C	D	E	F	G
CMF11	1.25±0.15	1.00±0.15	0.60±0.15	0.30±0.15	0.20±0.15	0.25±0.15	0.85±0.15
CMF21	2.00±0.20	1.25±0.20	1.00±0.20	0.35±0.10	0.40±0.10	0.55±0.20	1.20±0.20

Recommended Pattern



Dimensions in mm

TYPE	A	B	C	D
CMF11	0.2~0.3	0.7~1.0	0.7~0.8	1.6~1.9
CMF21	0.50	1.30	0.80	2.60

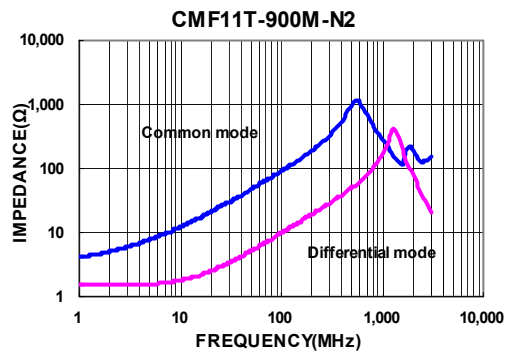
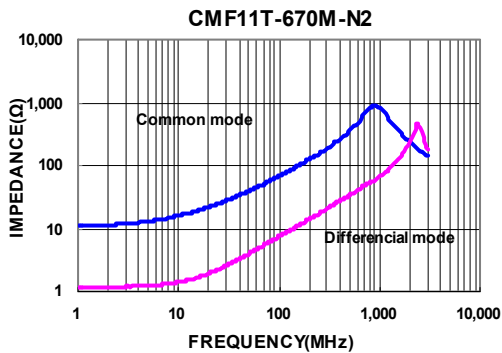
SMD Multilayer Common Mode Filter - CMF Series

Electrical Characteristics

Part Number	Impedance (Ω)	Test Frequency (MHz)	Tolerance ($\pm\%$)	RDC (Ω)Max	Rated Current (mA)Max	Rated Voltage (Vdc)Max	Insulation Resistance (M Ω) Min
CMF11T-670M-N2	67	100	20	1.35	200	10	200
CMF11T-900M-N2	90	100	20	1.45	200	10	200

- When ordering, please specify tolerance and packaging codes
- Tolerance: M = $\pm 20\%$
- Packaging: Clear tape and reel {standard}
- Z: Agilent E4991A
- Rdc (single line): CH502BC HP4338B
- Insulation Resistance: Agilent HP4339B
- Operating temperature range from -40°C to $+105^{\circ}\text{C}$. (Including self - temperature rise)

Test Instruments : Agilent E4991A Material/Impedance Analyzer



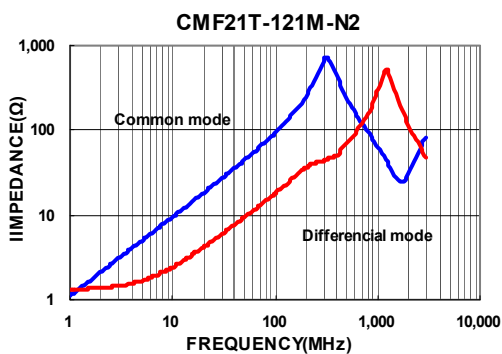
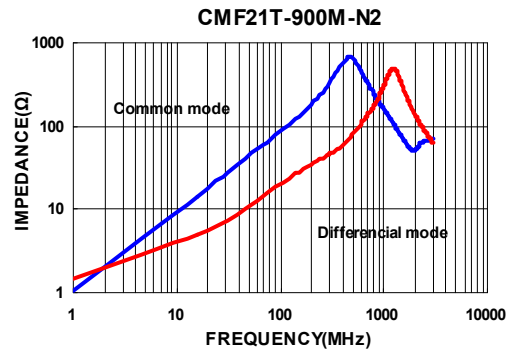
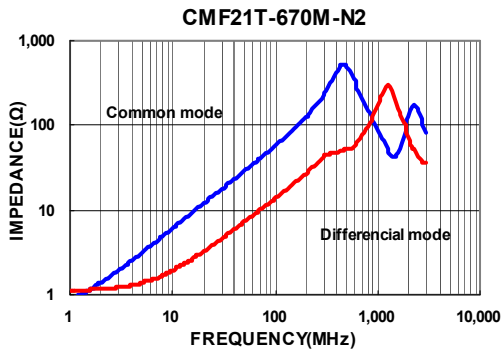
SMD Multilayer Common Mode Filter - CMF Series

Electrical Characteristics

Part Number	Impedance (Ω)	Test Frequency (MHz)	Tolerance ($\pm\%$)	RDC (Ω)Max	Rated Current (mA)Max	Rated Voltage (Vdc)Max	Insulation Resistance (M Ω) Min
CMF21T-670M-N2	67	100	20	0.80	400	30	200
CMF21T-900M-N2	90	100	20	0.85	400	30	200
CMF21T-121M-N2	120	100	20	0.90	400	30	200

- When ordering, please specify tolerance and packaging codes
- Tolerance: M = $\pm 20\%$
- Packaging: Clear tape and reel {standard}
- Z: Agilent E4991A
- Rdc (single line): CH502BC HP4338B
- Insulation Resistance: Agilent HP4339B
- Operating temperature range from -40°C to $+105^{\circ}\text{C}$. (Including self - temperature rise)

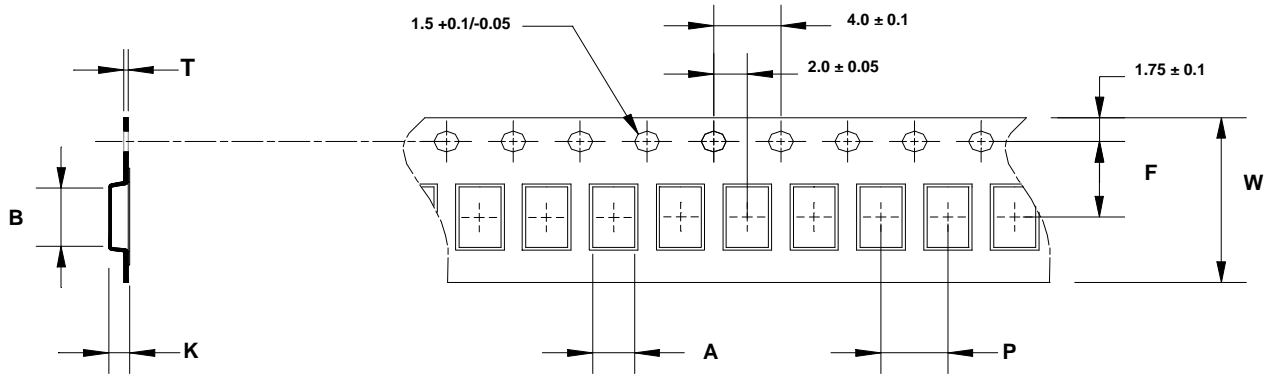
Test Instruments : Agilent E4991A Material/Impedance Analyzer



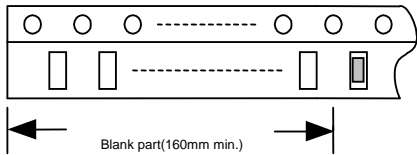
SMD Multilayer Common Mode Filter - CMF Series

Packaging Specifications

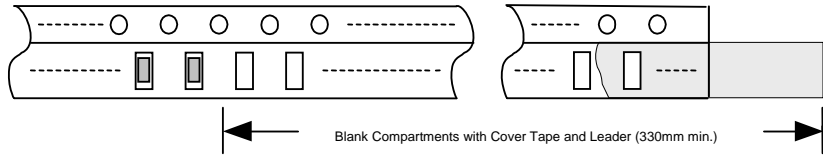
Tape Dimensions



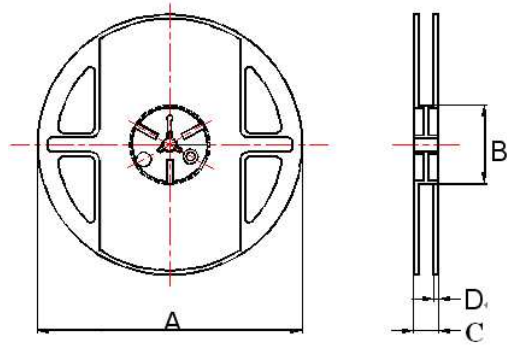
Trailer End



Leader End



Reel Dimensions



Dimensions in mm

TYPE	Tape Dimensions							Reel Dimensions				Quantity
	A	B	T	W	P	F	K	A	B	C	D	PCS / Reel
CMF11	1.15	1.50	0.25	8	4	3.5	0.72	178	60	12	1.5	4000
CMF21	1.45	2.30	0.22	8	4	3.5	1.13	178	60	12	1.5	3000