

MHCB Series



MHCB series is designed for low profile type with low RDC and ultra large current. Its molded magnetic shielded type is suitable for high-density mounting and ultra low buzz noise. Soldering conditions can be easily confirmed when mounting onto the board. This series also provides customers with embossed carrier type packaging for automatic mounting machine.

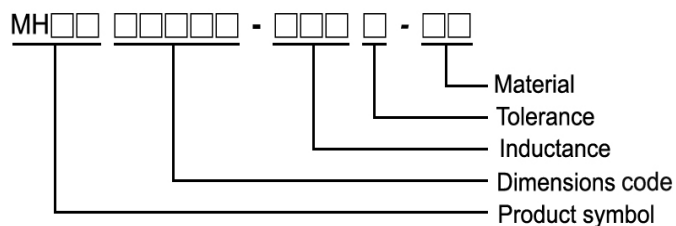
Features

- RoHS, Halogen Free and REACH Compliance
- High rated current
- Ultra low buzz noise

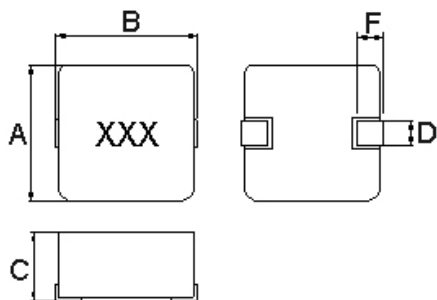
Applications

- Laptops and PCs
- Switches and servers
- Base stations
- DC/DC converters

Product Identification



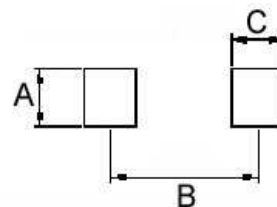
Shape and Dimensions



Dimensions in mm

TYPE	A	B	C	D	F
06030	6.6±0.2	6.95±0.35	2.8±0.2	3.0±0.3	1.6±0.5

Recommended Pattern



Dimensions in mm

TYPE	A	B	C
06030	3.5	6.05	2.35

Molding Power Choke – MHCB Series

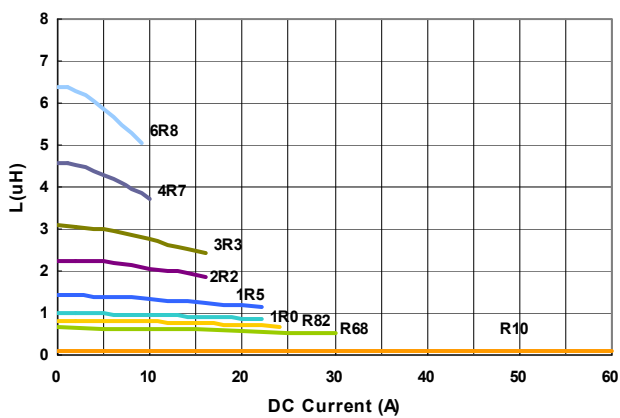
Electrical Characteristics

Part Number	Inductance (μH)	Tolerance ($\pm\%$)	Test Frequency (KHz)	I _{rms} (A)Typ.	I _{sat} (A)Typ.	RDC ($\text{m}\Omega$)Max
MHCB06030-R10M-C1	0.10	20	100	32.5	60	1.7
MHCB06030-R68M-C1	0.68	20	100	15.5	25	5.5
MHCB06030-R82M-C1	0.82	20	100	13.0	24	8.0
MHCB06030-1R0M-C1	1.0	20	100	11.0	22	10
MHCB06030-1R5M-C1	1.50	20	100	9.0	18	15
MHCB06030-2R2M-C1	2.2	20	100	8.0	14	20
MHCB06030-3R3M-C1	3.3	20	100	6.0	13.5	30
MHCB06030-4R7M-C1	4.7	20	100	5.5	10.0	40
MHCB06030-6R8M-C1	6.8	20	100	4.5	8.0	60

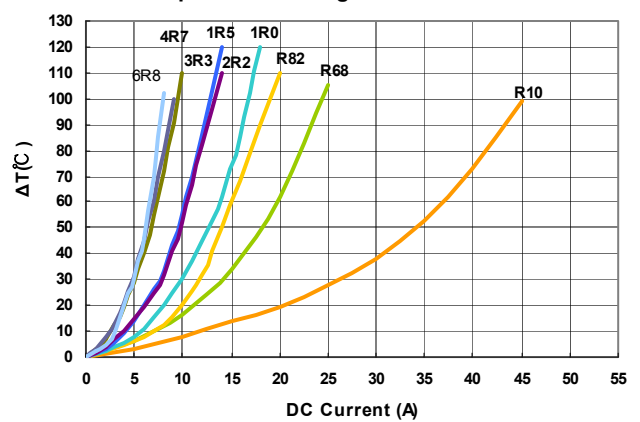
- I_{rms} DC current (A) that will cause an approximate ΔT of 40°C
- I_{sat} DC current (A) that will cause L to drop approximately 20%
- Tolerance : M= $\pm 20\%$
- L : WK 3260B, 100KHz 0.5V
- Rdc : CHEN HWA 502
- Operating temperature range from -55°C to 125°C. (Including self - temperature rise)

Test Instruments : WK3260B Impedance / Material Analyzer

Inductance v.s DC Current



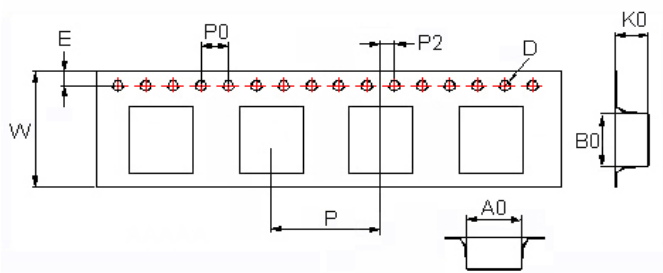
Temperature Change v.s DC Current



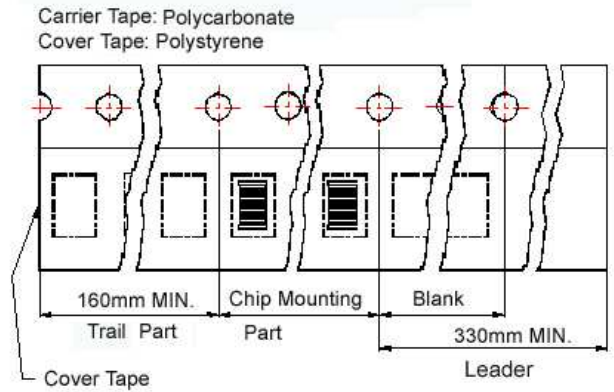
Molding Power Choke – MHCB Series

Packaging Specifications

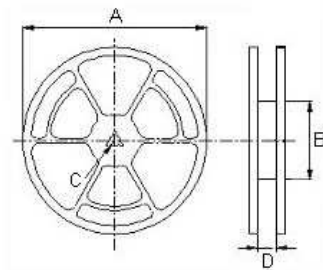
Tape Dimensions



Tape Material



Reel Dimensions



Dimensions in mm

TYPE	Tape Dimensions									Reel Dimensions				Quantity
	A0	B0	K0	D	E	W	P	P0	P2	A	B	C	D	PCS / REEL
06030	6.9	7.6	3.4	1.55	1.75	16	12	4	2	330	100	13	17.4	1000