

# **USB 2.0 Gigabit Ethernet Adapter**

10 / 100 / 1000 Mbps

---

User's Manual

## **Copyright Statement**

No part of this publication may be reproduced in any form by any means without the prior written permission. Other trademarks or brand names mentioned herein are trademarks or registered trademarks of their respective companies.

## **Disclaimer**

Information in this document is subject to change without notice. The manufacturer does not make any representations or warranties (implied or otherwise) regarding the accuracy and completeness of this document and shall in no event be liable for any loss of profit or any commercial damage, including but not limited to special, incidental, consequential, or other damage.

## **Safety Instructions**

Always read the safety instructions carefully

- ◆ Keep this User's Manual for future reference
- ◆ Keep this equipment away from humidity
- ◆ If any of the following situation arises, get the equipment checked by a service technician:
  - The equipment has been exposed to moisture.
  - The equipment has been dropped and damaged.
  - The equipment has obvious sign of breakage.
  - The equipment has not been working well or you cannot get it work according to User's Manual.

# Table of Contents

1. Introduction .....	4
Features .....	4
Package .....	4
Contents System Requirements .....	5
LED Status .....	5
2. Installation .....	5
Driver Installation .....	6
Verifying the Driver Installation in Windows .....	12
Connecting to a Network .....	13
Configuring Network Settings .....	13
Windows XP/2000/Vista .....	13
Windows ME/98SE .....	15
3. Specifications.....	16
4. Regulatory Compliance .....	17

## 1. Introduction

This USB 2.0 Gigabit Ethernet adapter is a cost effective solution that converts a USB port into a 10/100/1000Base-T Ethernet port. It enables low cost and affordable Gigabit Ethernet network connection to desktop, notebook PC, and embedded system using popular USB ports. No need to purchase an expensive Gigabit network interface card and to spare a PCI or Cardbus slot, just using your existing USB ports and you can upgrade your network connection speed.

### Features

- ◆ Supports 10/100/1000 Mbps auto-sensing capability
- ◆ Supports Auto MDIX (straight and cross network cable auto-detection)
- ◆ USB specification 1.0, 1.1 and 2.0 compliant
- ◆ Supports USB full and high speed modes with bus power capability
- ◆ IEEE 802.3, 802.3u, and 802.3ab (10Base-T, 100Base-TX, and 1000Base-T) compatible
- ◆ Supports both full-duplex and half-duplex operation in Fast Ethernet
- ◆ Supports Jumbo packet of up to 9KB
- ◆ Supports suspend mode and remote wakeup via link-up and magic packet
- ◆ Plug and Play Installation

### Package Contents

Before installation, please check the items of the package.

- ◆ USB 2.0 Gigabit Ethernet Adapter
- ◆ Driver CD
- ◆ Quick Installation Guide

## System Requirements

- ◆ Pentium III 800MHz or faster PC with USB 2.0 port
- ◆ 256 MB RAM or more
- ◆ Windows\_ 98SE/ME/2000/XP/Vista/Linux/Mac

## LED Status

LED	Color	Status	Description
Link	Green	Off	Link is not established.
		On	Link is established.
1000Mbps	Green	Off	Link is not established
			Link to 10/100Mbps network.
		On	Link to 1000Mbps network.
		Blinking	There is 1000Mbps traffic flow over the network.

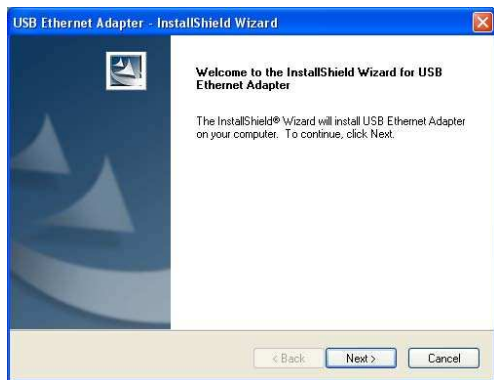
## 2. Installation

### Driver Installation

**Note:** DO NOT connect the Ethernet adapter to your computer before completing the driver installation.

1. Insert the provided CD into your CD-ROM drive. The setup program will start automatically. If not, locate and double-click the **Setup.exe** file in the **Driver** folder to launch the setup program.

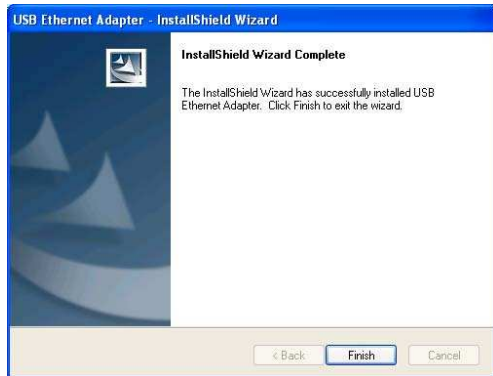
2. Select **Complete** and click **Next**.



3. Click **Install** to start the installation.



4. Click **Finish** when the installation is complete.



5. Select **Yes, I want to restart my computer now** and click **Finish** to reboot your computer.



6. After reboot, connect the Ethernet adapter's USB end to a free USB port of your computer. At this stage, different situations may occur according to your operation system. Follow the instructions below to complete the installation.

## Windows XP / Vista

1. When the **Found New Hardware Wizard** screen appears, select **Install the software automatically (Recommended)** and click **Next**.



2. If compatibility message appears, just click **Continue Anyway**.



3. Click **Finish** to complete the installation.



## Windows 2000

If **Digital Signature Not Found** window appears, just click **Yes**.

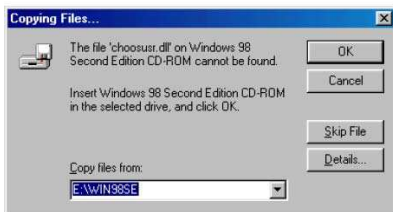


## Windows ME

Just wait the system to complete the installation.

## Windows 98SE

Upon your USB device connection, if the system prompts you for the Windows 98SE CD-ROM, click **OK**. Remove the provided CD and insert the Windows 98SE CD-ROM. Then click **OK** again.

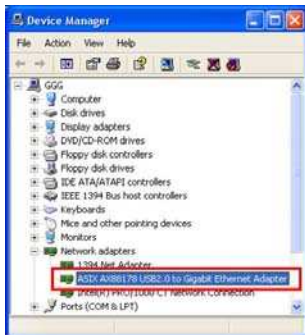


**Important:** Once the above copying files process is done, you must manually restart your computer to ensure the complete installation. Otherwise some services are not yet installed and the network adapter will not function properly.

### ***Verifying the Driver Installation in Windows***

To verify your Ethernet adapter installation, select **Control Panel > System > (Hardware) > Device Manager**. In the **Network adapters** group, a string similar to **USB2.0 to Gigabit Ethernet Adapter** should be displayed.

If there is a question or exclamation mark next to that item, then the driver is not properly installed. Please delete the item and repeat the installation steps.

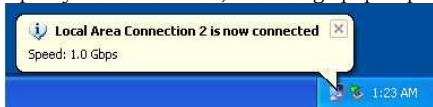


\*The example screenshot is taken from Windows XP.

## Connecting to a Network

Now you can connect your network to the device's LAN port. The LAN port supports Auto-MDIX feature. It eliminates the need to use crossover cables.

Upon your connection, a message pops up in the notification area indicating your connection speed.



The adapter's AutoSense feature can automatically detect the network's maximum line speed. To have a 1000Mbps connection, your network device (e.g., switch, router or DSL modem) must also support 1000Mbps.

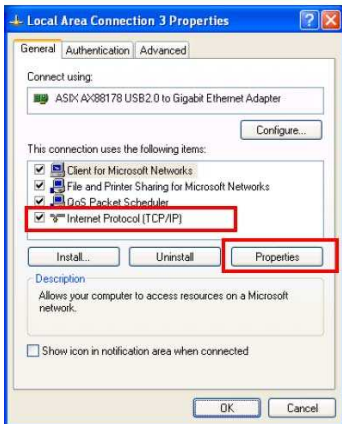
## Configuring Network Settings

You should configure your Ethernet adapter as required according to your network environment. If you are unsure about the settings, consult your network administrator for assistance. The following describes how to launch the network settings window for your Ethernet adapter.

### Windows XP/2000/Vista

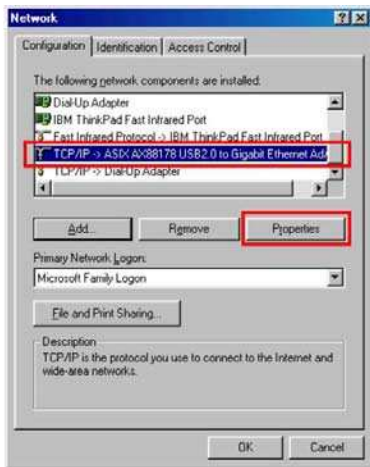
After the installation, a local area connection icon is automatically created for your Ethernet adapter in the **Network Connections** folder. You can access **Network Connections** folder by selecting **Start > Settings > Control Panel > Network and Internet Connections**.

In the **Network Connections** folder, double-click the connection icon for your adapter. Then the **Local Area Connection Properties** window appears.



## Windows ME/98SE

Right-click the **Network Neighborhood** icon on the desktop and select **Properties**. Then the **Network** window appears.



### 3. Specifications

<b>Network Standards</b>	IEEE 802.3, 802.3u, and 802.3ab
<b>Data Bus</b>	USB 2.0
<b>LED Indicators</b>	Link, 1000Mbps
<b>Power</b>	Integrates on-chip 3.3V to 2.5V voltage regulator and requires only single power supply: 3.3V
<b>Network Interface</b>	Female RJ45 jack supporting Auto MDIX
<b>Full Duplex</b>	10BaseT, 100BaseTx, 1000BaseT
<b>Half Duplex</b>	10BaseT, 100BaseTx
<b>RAM</b>	Embedded 20KB SRAM for RX packet buffering and 20KB SRAM for TX packet buffering
<b>Operating Temperature</b>	0°C to 70°C
<b>Operating System Support</b>	Windows 98SE, ME, 2000, XP , Vista / Linux / MAC
<b>Certification</b>	FCC, CE

\* Specification is subject to change without further notice.

## 4. Regulatory Compliance

### FCC Conditions

This equipment has been tested and found to comply with Part 15 of the FCC Rules. Operation is subject to the following two conditions:

(1) This device may not cause harmful interference

(2) This device must accept any interference received. Including interference that may cause undesired operation.

### CE

This equipment is in compliance with the requirements of the following regulations: EN 55 022: CLASS B

### WEEE Information

For EU (European Union) member users: According to the WEEE (Waste electrical and electronic equipment) Directive, do not dispose of this product as household waste or commercial waste. Waste electrical and electronic equipment should be appropriately collected and recycled as required by practices established for your country. For information on recycling of this product, please contact your local authorities, your household waste disposal service or the shop where you purchased the product.



