



HIGH POWER USB WIRELESS-G WI-FI NETWORK ADAPTER



USER MANUAL

NT-WGHU

NT-WGHU / USER'S GUIDE

HIGH POWER USB WIRELESS-G WI-FI NETWORK ADAPTER

The Sabrent High Power Wireless Adapter gives you the flexibility to position your desktop or notebook where you want, without the cost or inconvenience of running network cables. Maximize data transfer speeds of up to 54Mbps from as far as 1000 meters with the included 7" 6 dBi antenna.

Simply install the USB adapter into an available USB port and connect to an available wireless network. If you already have an internal wireless card, you can use this USB 1000mW adapter by disabling your internal card in device manager.

PACKAGE CONTENTS

- Wireless-G USB adapter
- High gain antenna
- USB 2.0 cable
- Drivers CD
- User manual

SYSTEM REQUIREMENTS

- Windows XP, Windows VISTA, Windows 7



HOW IT WORKS



WIRELESS ROUTER



USB 2.0



DESKTOP PC



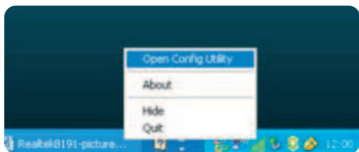
NOTEBOOK

DRIVER INSTALLATION

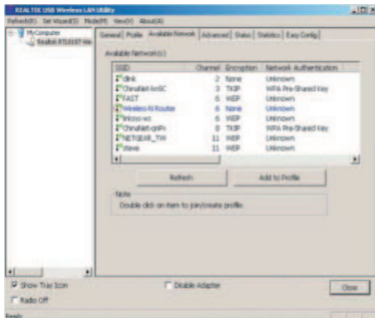
Insert Driver CD into the CD/DVD ROM, click **“Windows”** to start the installation. The default settings should stay the same for most users, so simply click **“Next”** until you are asked to restart the computer.

Once the installation is complete, you can configure the **Sabrent USB Adapter** to a wireless router. The wireless client will operate automatically after the computer is restarted; an application icon will appear at the lower right corner in the desktop of windows system.

- 1 Right click on the wireless icon and select **“Open Config Utility”**



- 2 The configuration utility will scan for wireless networks within range. Click **“Refresh”** to refresh the list of available wireless networks. To join a particular network that displays, select it and click **“Add to Profile”** (Please input the correct password, if required.)



For installation issues, please contact support@sabrent.com

