

# Sabrent EC-UEIS7 USB 2.0/ESATA TO 3.5" IDE/SATA/SATA II ALUMINUM HARD DRIVE ENCLOSURE WITH COOLING FAN

## 1. Device Setup

### 3.5 Inch IDE Drive:

1. Check if your IDE drive has **Jumpers**, if so make sure they are set to **Master**. (Note: Please refer to the drive manufacturer's website for more information regarding your specific hard drive model.):



2. Remove the **screws**, on the side **without** the fan, using the included screwdriver. Remove the **panel**:  
Figure A:



Figure B:



3. Locate the IDE power cable. Connect it to the IDE power port on your drive:  
Figure A:



Figure B:

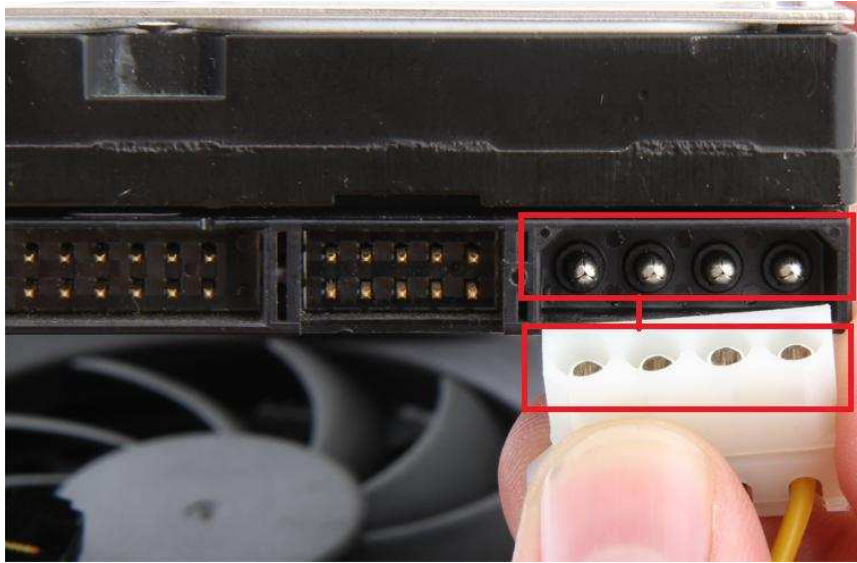
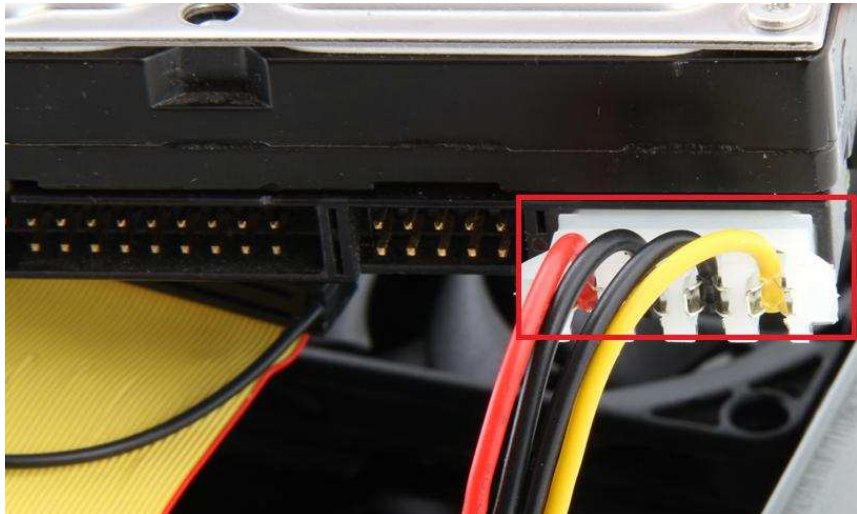
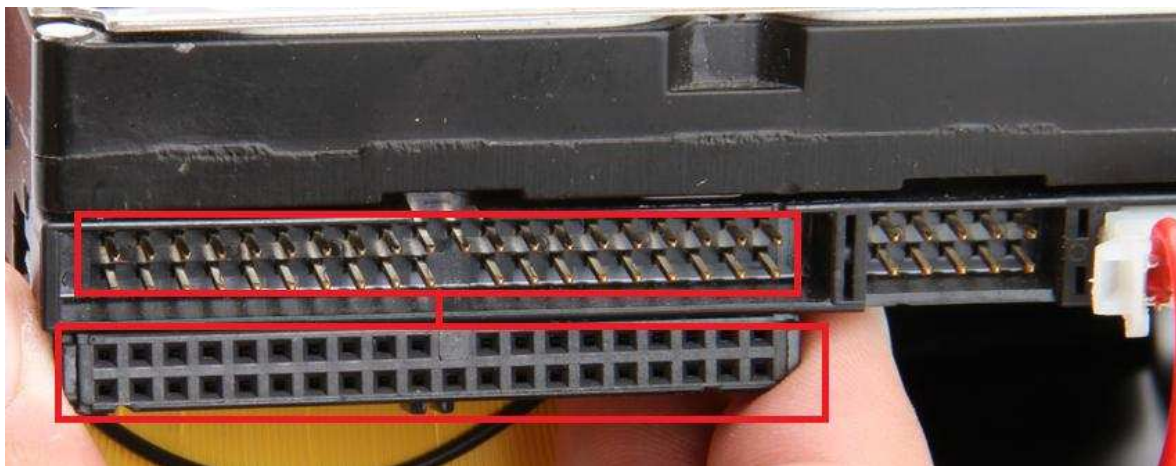


Figure C:



4. Locate the IDE data cable. Connect it to the IDE data port on your drive.

Figure A:



**Figure B:**



**Figure C:**

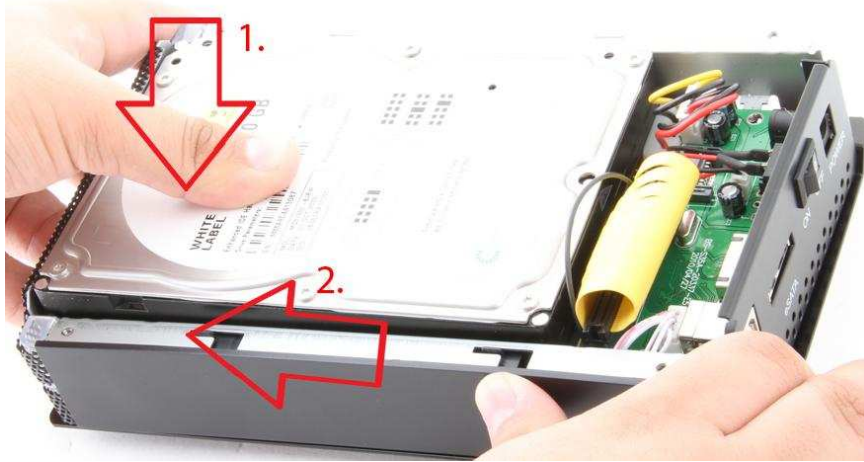


5. Insert the hard into the enclosure, as shown below:

**Figure A:**



Figure B:



6. Place the **cover** back on the enclosure. **Screw** it back in place:

Figure A:



### 3.5 Inch SATA Drive

Figure A:

1. **Remove the screws, on the backside of the fan, using the included screwdriver. Remove the panel:**



Figure B:



1. Locate the SATA port on the enclosure. Plug the hard drive directly into the port.

Figure A:

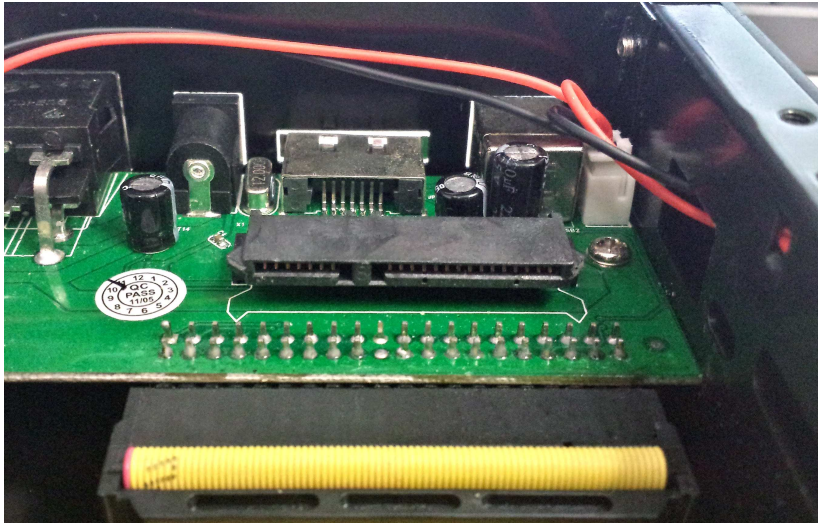


Figure B:

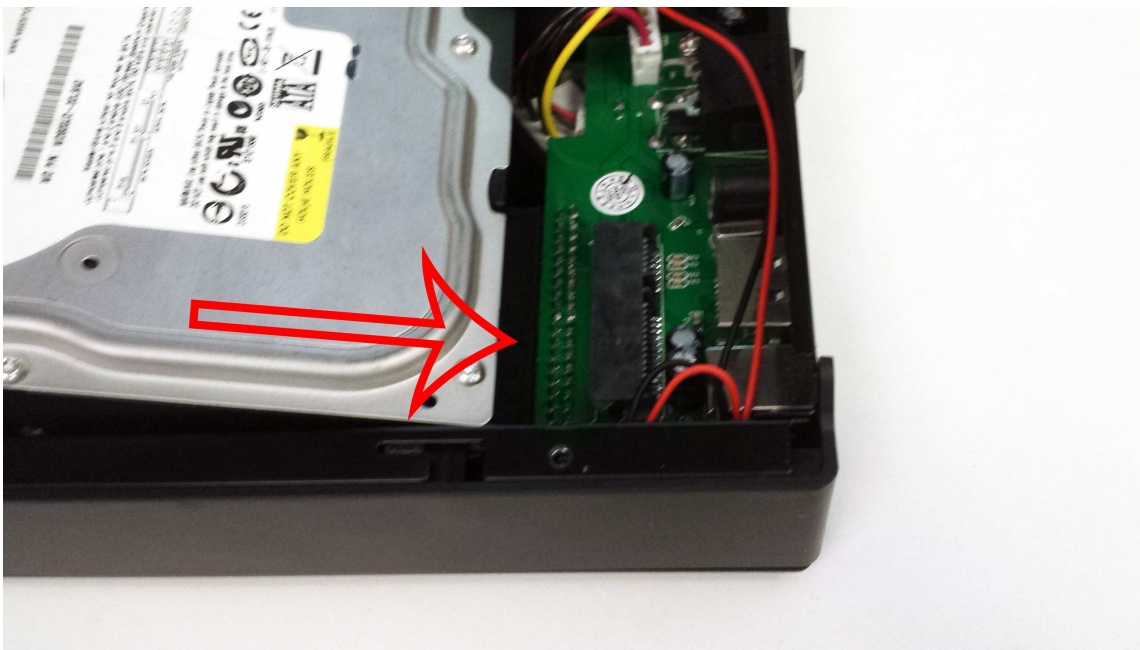


Figure C:



2. Place the **cover** back on the enclosure. **Screw** it back in place:

Figure A:



## 2. Computer Setup

1. Connect the **USB cable** into the **USB port** on the enclosure.

Figure A:



Figure B:



Alternatively, connect the E-Sata cable into the E-Sata port if you require it. (Note: E-Sata connector may be a bit difficult to plug in, and may require a bit of force to properly connect)

Figure A:

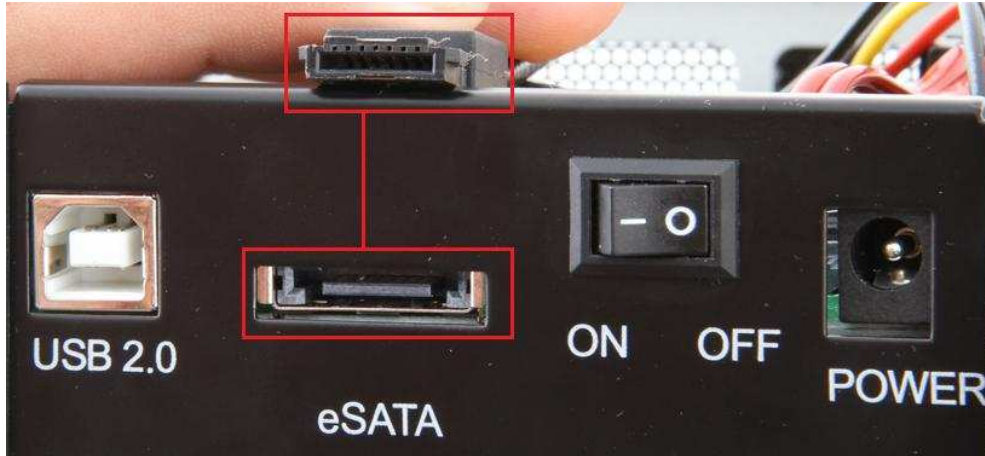
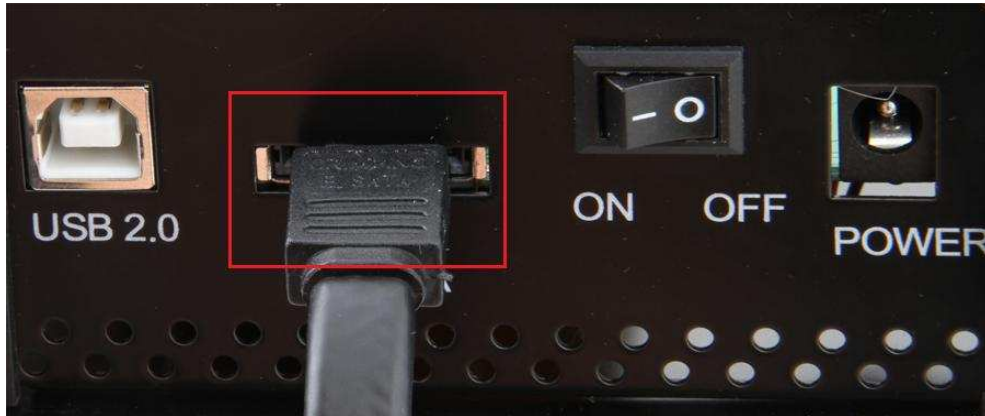


Figure B:



2. Connect the power cable into the power port on the enclosure.

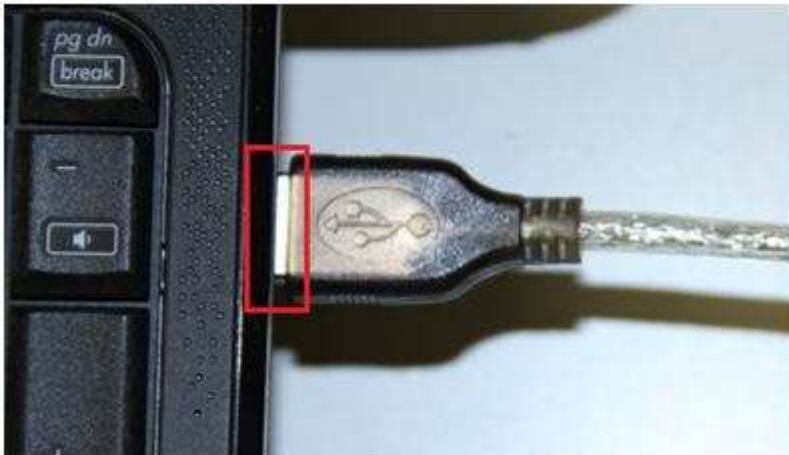
Figure A:



**Figure B:**



- 3. Plug the USB or E-Sata cable into your computer's USB or E-Sata port:**



- 4. Flip the power switch ON:**



## Driver Setup

### Windows 2000/XP/Vista/7

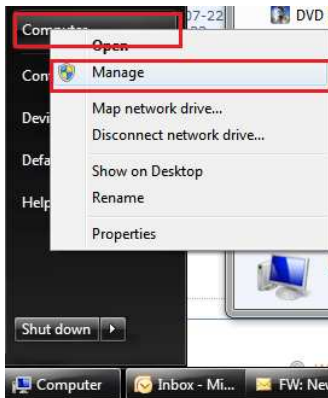
For Windows 2000/XP/VISTA/7, no drivers or software are necessary.

For Windows 98 SE/ ME:

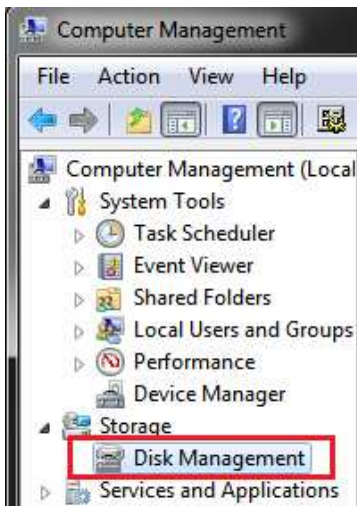
1. Windows will detect New Hardware, and prompt you to install driver.
2. **Choose “Search for the best driver”.**
3. Windows will find the necessary driver, and install them.
4. **Restart** your computer.
5. A new removable drive should appear in **“My Computer”**, assuming the drive has already been initialized. If the drive is new, then proceed to the following section.

**If the Hard-Drive is brand new you may need to initialize it first in order to cause the Drive Letter to appear:**

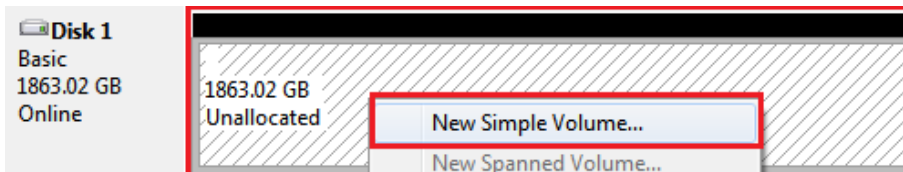
1. **Click the Start button, right-click on “My Computer”, and select “Manage”:**



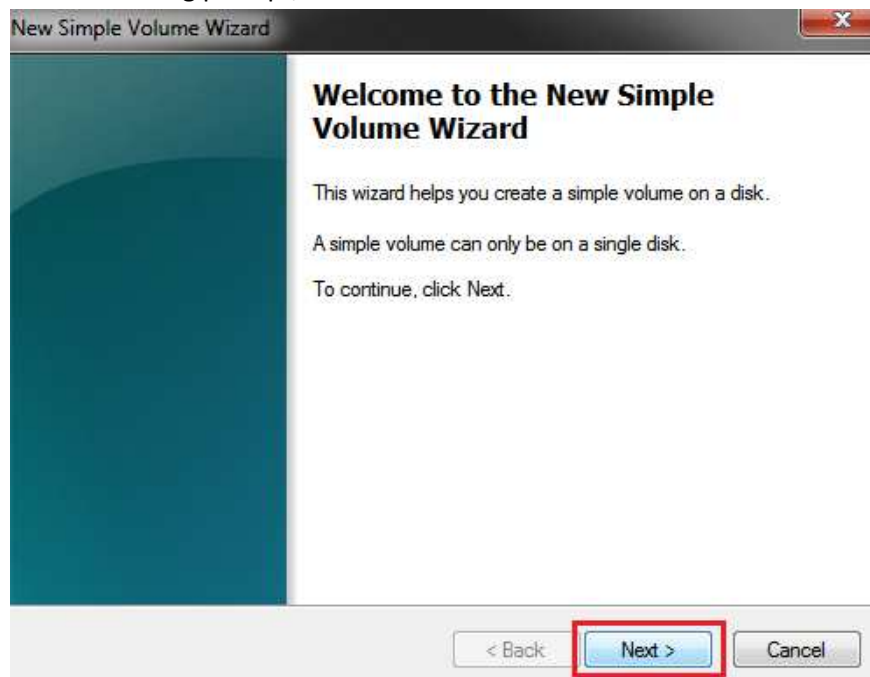
2. **Click on “Disk Management”:**



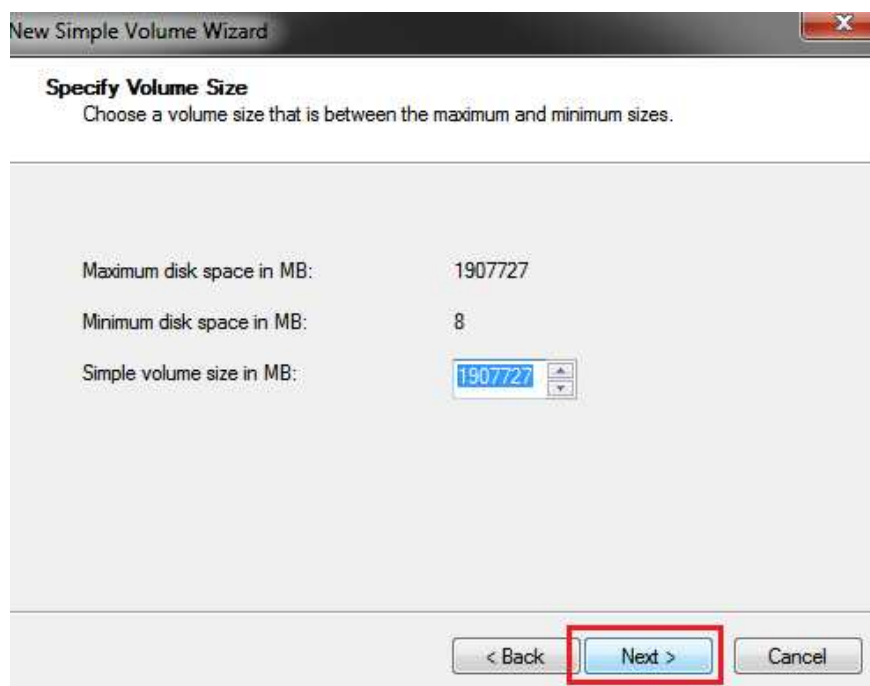
3. **Locate the drive in the right column and right-click on the drive and click “New Simple Volume”:**



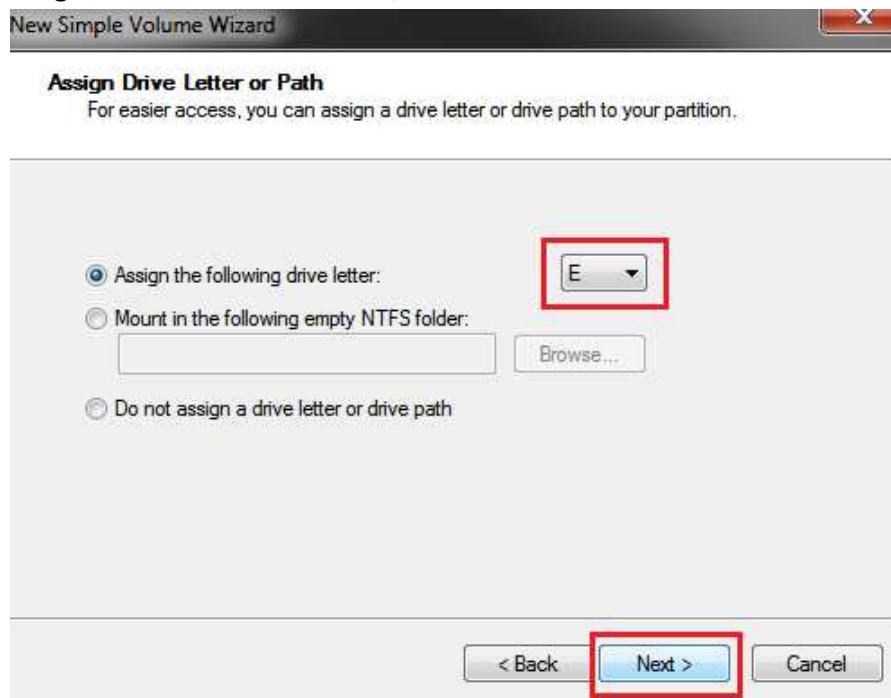
4. At the following prompt, click "Next":



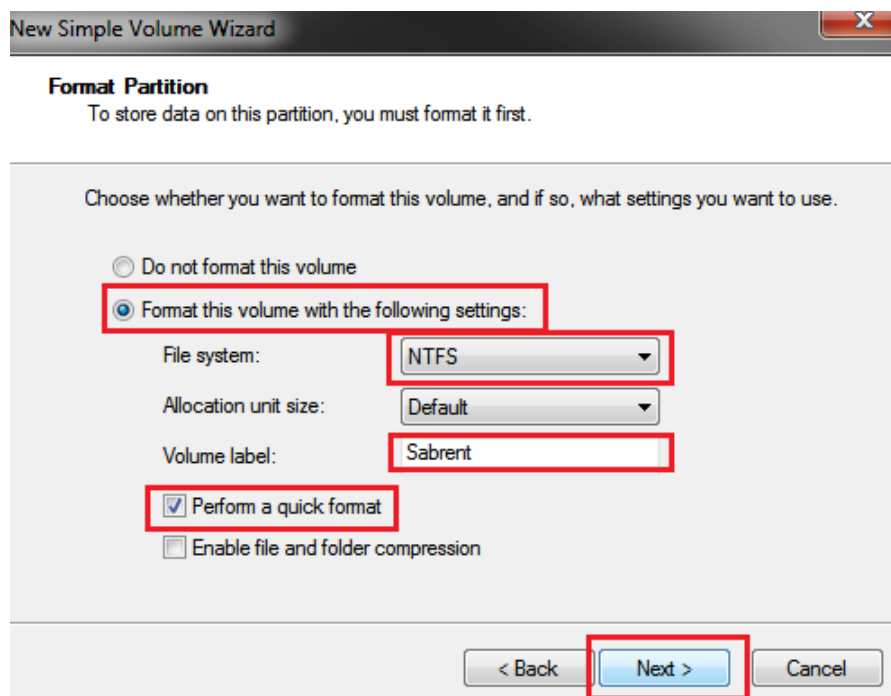
5. Click "Next":



6. Assign a drive letter to the drive, then click "Next":



7. Click on "Format this volume with the following settings:" Change the "File system" to "NTFS". Change the "Volume label" to what you want the drive to be named. Click the checkbox for "Perform a quick format". Click "Next":



8. Click **“Finish”**. Windows will now begin formatting and initializing the disk:

Volume	Layout	Type	File System	Status	Capacity	Free Space	% Free
(C:)	Simple	Basic	NTFS	Healthy (Boot, Page File, Crash Dump, Primary Partition)	148.91 GB	92.12 GB	62 %
Driver (D:)	Simple	Basic	CDFS	Healthy (Primary Partition)	443 MB	0 MB	0 %
Sabrent (E:)	Simple	Basic	NTFS	Healthy (Primary Partition)	1863.01 GB	1862.87 GB	100 %
System Reserved	Simple	Basic	NTFS	Healthy (System, Active, Primary Partition)	100 MB	71 MB	71 %

Disk 1  
Basic  
1863.02 GB  
Online

Sabrent (E:)  
1863.01 GB NTFS  
Healthy (Primary Partition)

9. Open **“My Computer”** and verify that the drive shows up properly:

Computer

Organize AutoPlay Properties System properties Uninstall or change a program

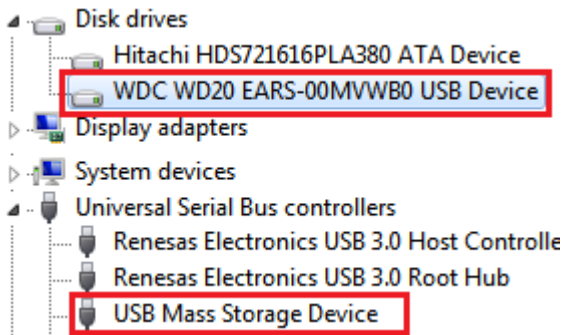
Hard Disk Drives (2)

Local Disk (C:) 92.0 GB free of 148 GB

Sabrent (E:) 1.81 TB free of 1.81 TB

If the drive already has data on it you can skip the previous step.

1. Check the **“Device Manager”** to make sure that the **“USB Mass Storage Device”** driver appears under the **“Universal Serial Bus Controllers”** section. Also check that the drive shows up under **“Disk drives”** as a **“(Hard drive model number) USB Device”**. There should be no error message in your Device Manager, such as a bold or !:



2. You may also need to change the HDD settings from Dynamic to Basic, then format NTFS, and give it a drive letter, but you should back up the data on your drive before doing this. To convert the disk from Dynamic to Basic follow the instructions at the link included. <http://sabrent.com/support/knowledgebase.php?article=58>
3. **Please Note:** Make sure to disable disk drive password protection

### Frequently Asked Questions:

1. **My drive died or was damaged in my previous computer. Why doesn't it/will it work with this adapter?**  
This enclosure is the equivalent of plugging in the drive directly into your computer's IDE or SATA port. If the drive was damaged to the point where it won't work when plugged directly into the computer, then it is likely that it will not work using this adapter.
1. **I set my IDE drive's Jumper to the Master setting, but it still doesn't show up on my computer.**  
Usually you will have to set the Jumper to Master, but depending on the drive you may have to set it to Slave or Cable Select. Check to see if the drive shows up under My Computer after changing the Jumper to each possible setting. If these settings do not work, then simply place the jumper back to the original setting and try once again.
2. **My drive doesn't show up on my computer, but it has data and works elsewhere.**  
Make sure the drive was set up in the **exact** steps laid out in this manual.
3. **Why doesn't my 2+ TB hard drive show up as full capacity? Why doesn't my 2+ TB drive show up at all?**  
If the drive has a **Master Boot Record** partition, then it will only allow a **maximum** usable amount of **2TB**. This limitation exists in all Windows operating systems, up to Windows XP 64 Bit. For Windows Vista and Windows 7 you can get past this limitation, and utilize the full capacity of the drive by converting it to a **GPT** partition drive.

To convert the disk to a **GPT** partition disk in Windows Vista and Windows 7:

**Open “Disk Management”, locate the disk in the list, right click the disk and click on “Convert to GPT Disk”**

You will now have access to the full capacity of your 2+ TB disk.

