



COMMUNICATOR D2

Combo Dual HDD Docking Station

Quick Installation

User's Manual

1. Introduction

Communicator D2 HDD Combo is a multi purpose storage device which including HDD/ Flash Disk Option with Advance Wireless input for data storage. Application for system backup / video editing / enlarge drive capacity from two different size HDD appear to one drive. Create diverse value-added applications besides flash card reader such as E-commerce, phone book/ SMS edit/ save/ backup for mobile SIM cards through the smart card interface. Convenience communication through Bluetooth /WiFi for data transfer from Communicator D2 Combo to other devices such as Mobile phone/ MP3 etc...

2. System Requirements

PC Systems

- Intel Pentium-III 500MHz equivalent or faster
- CD-ROM Drive / 256MB (Minimum) / 500MB of free disk space
- SVGA (800x600) or higher resolution with at least 256 colors
- Windows 2K/XP/2003/Vista with the latest Service Packs
- SATA connection: SATA host controller with Port Multiplier support
- USB connection: USB 2.0 Port

Macintosh Systems

- PowerMac G5, MacBook Pro or Mac Pro
- MacOS X,10.4.8 (or later) / CD-ROM Drive
- SATA connection: SATA host controller with Port Multiplier support
- USB connection: USB 2.0 Port

3. Features

- Available for 2 x 2.5" and 3.5" SATA HDD up to 1.5TB
- e-SATA / USB 2.0 IN ONE
- Compatible with all 2.5" and 3.5" SATA I/II HDDs
- Compliments with USB 2.0 Transfer up to 480Mbps
- Compliments with e-SATA Transfer up to 3Gbps
- Flash Media Card Reader (SD+MS/ M2+SM/ XD / Smart Card)
- SIM card reader/writer Supported
- Built-in 2 ports USB 2.0 High Performance NEC Hub
- OTB Files/System Backup Program with Backup Button
- HDD and Power LED indicators
- Optional: Wi-Fi/Bluetooth/DVI Multi-Display Interface

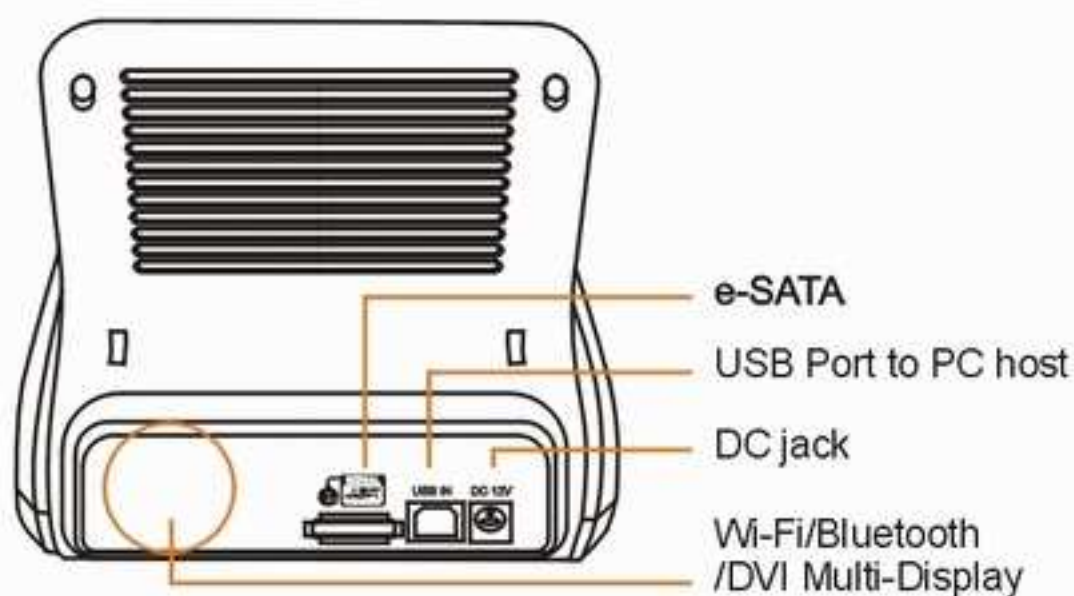
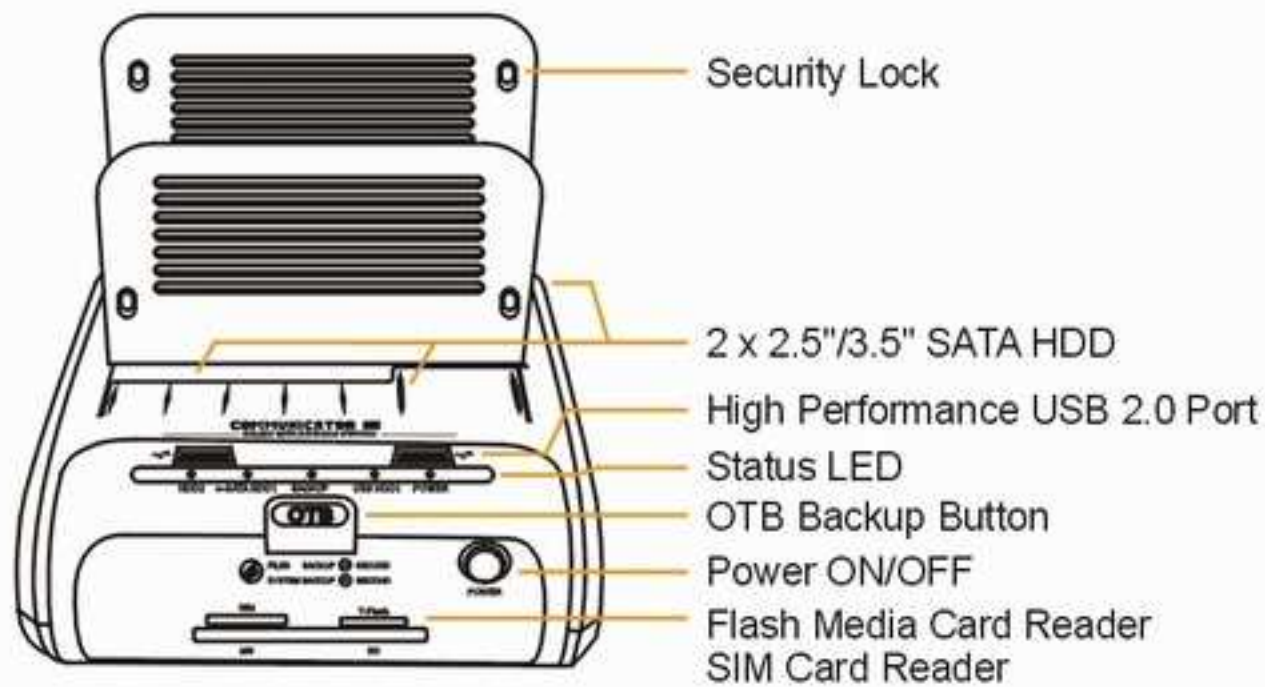
Package Includes

- 1 x Dual HDD Combo Docking Station
- 1 x Power Adapter & Cable 12V
- 1 x USB 2.0 Cable
- 1 x e-SATA Cable
- 1 x Drivers & Software CD
- 1 x Quick Install Guide
- Optional : WiFi / Bluetooth / Display

4. Installation

- Connect the Attached power adapter to the Communicator D2.
- Connect the USB or eSATA Cable to the Communicator D2 and attach the other end to your computer.

Note: For eSATA connections, the system must support Port Multiplier (PM) specifications to read both hard drives.



Insert 2.5" or 3.5" SATA HDD into the slot



Simplify plug in the HDD upright
Secure the HDD with attached screw is optional



5. Removal

Warning: Please power down the Communicator D2 by pressing the power button to ensure safe removal of the hard drive(s). Do not remove the hard drive(s) when the disc is reading or writing.



6. Driver & Utility Installation

Drivers Installation

Windows 2000/XP/VISTA

No drivers are necessary when using Windows 2000/XP/VISTA. If the hard drive does not appear under My Computer, be sure to enter disc management in your control panel to partition your hard drive.

Windows ME

- The first time you plug in the Communicator D2 into a USB port or e-SATA of your computer, the "Add New Hardware Wizard" dialog box will appear.
- Click on [Next]. Check the [Search for the best driver for your device] and click on [Next again.]
- After the needed files are copied into your system, click on [Finish].
- You should now be able to see the new hard drives under My Computer. A green Unplug or Eject hardware icon will appear in the system tray as well. If the drive does not appear, you may need to partition your hard drive first.

Mac OS 9.0 or later

No drivers are necessary when using Mac OS 9.0 above. If the hard drive does not appear on the desktop, be sure to partition your hard drive.

Mac OS 8.6

- Unplug the Communicator D2 if you currently have it connected.
- USB Mass Storage Support 1.3.5 must be installed on your system. If it is not, you can download the USB Mass Storage Support 1.3.5 from the Apple Software Updates website: <http://www.apple.com/support>.
- Follow the direction associated with the USB Mass Storage Support driver to install.
- Repeat the steps listed under “Connecting the Communicator D2 to your Computer”.

Utility Installation

Please insert Drivers CD and click “Setup.exe”



COMMUNICATOR D2
Combo Dual HDD Docking Station

 High-Speed Storage Processor

 OneTouchBackup

Install D2 HDD Docking Drivers

Install One Touch Backup Utility

Install SIM Editor Utility

Quick Installation Guide

Advance Function >>

Browse CD **Exit**

To install the One Touch Backup Utility

Click the “**Install D2 HDD Docking Drivers**” from the setup cover page

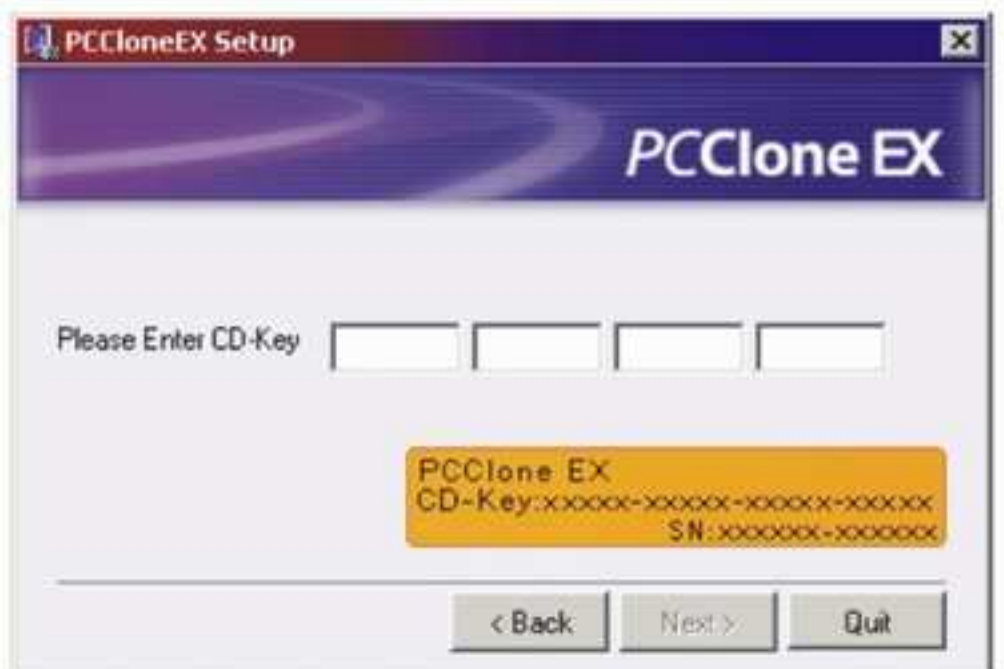


Then click the “**Install One Touch Backup Utility**” from the setup cover page



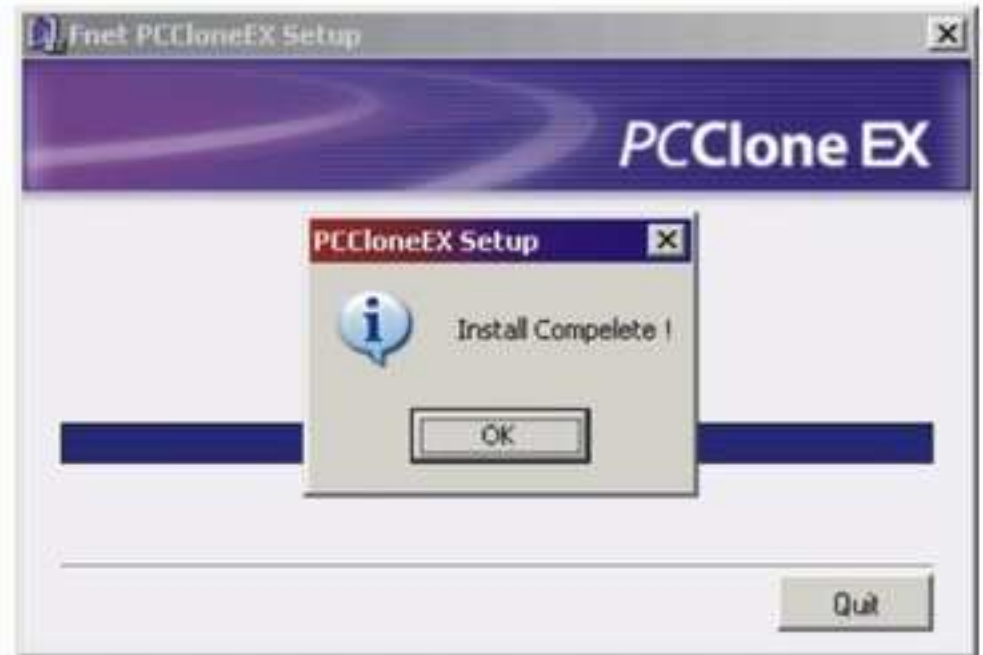
Click "install".

Before installing, please read the License and Warranty Agreement. Click "Agree" for next steps.

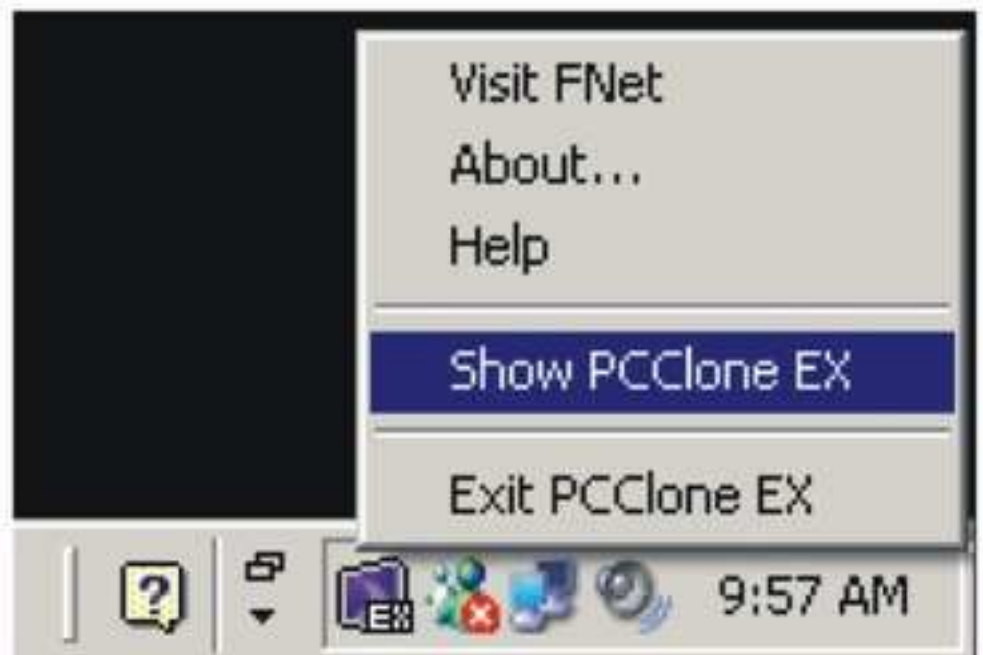


Key in the digital characters that is shown on the yellow label of licensing code (located at the back of Communicator D2).

PCClone EX installation is completed, and click "OK" to quit.



The "PCClone EX" icon will be displayed at the notification area after installation, double-click the icon or right-click the mouse to show and execute its functions.



1. Quick Launch.
2. System Backup.
3. File Backup.
4. File Manager.
5. Setup.
6. System Backup.
7. File Backup.
8. Minimized.
9. About.
10. Help.

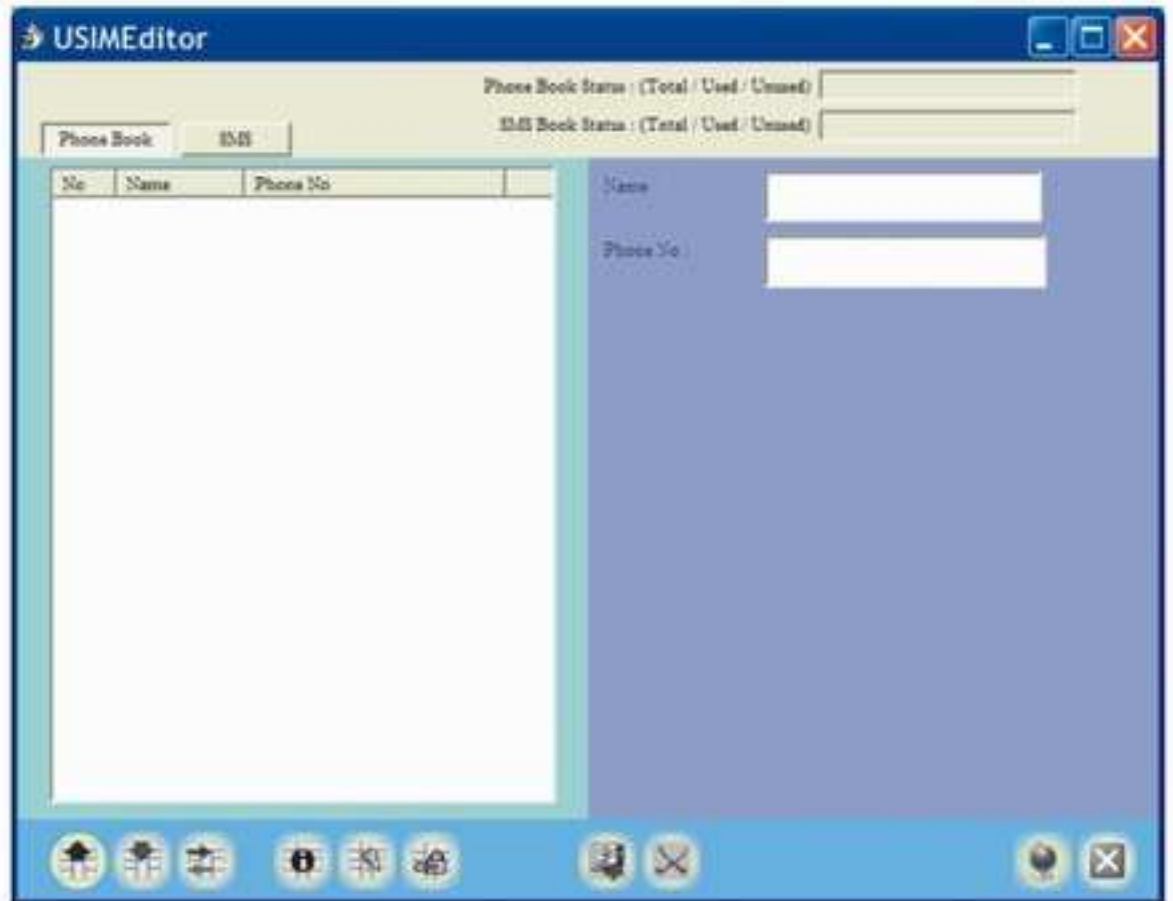


For detail information on how to use the "PCClone EX" program, please click on the "10" key for guideline.

To install the SIM Editor Utility

from the setup cover page, select and Click the “Install SIM Editor Utility” button

When finish the installation, the “SIM Editor” quick star icon will appear at your desktop.



To install the Advance Function

Advance Function Include :

- SteelVine Manager User's Guide (Windows, MAC OS, Linux)
- SteelVine Storage Policies (BIG, JOB Mode Setting)...



COMMUNICATOR D2
Combo Dual HDD Docking Station

Silicon Image
High-Speed Storage Processor

OneTouchBackup

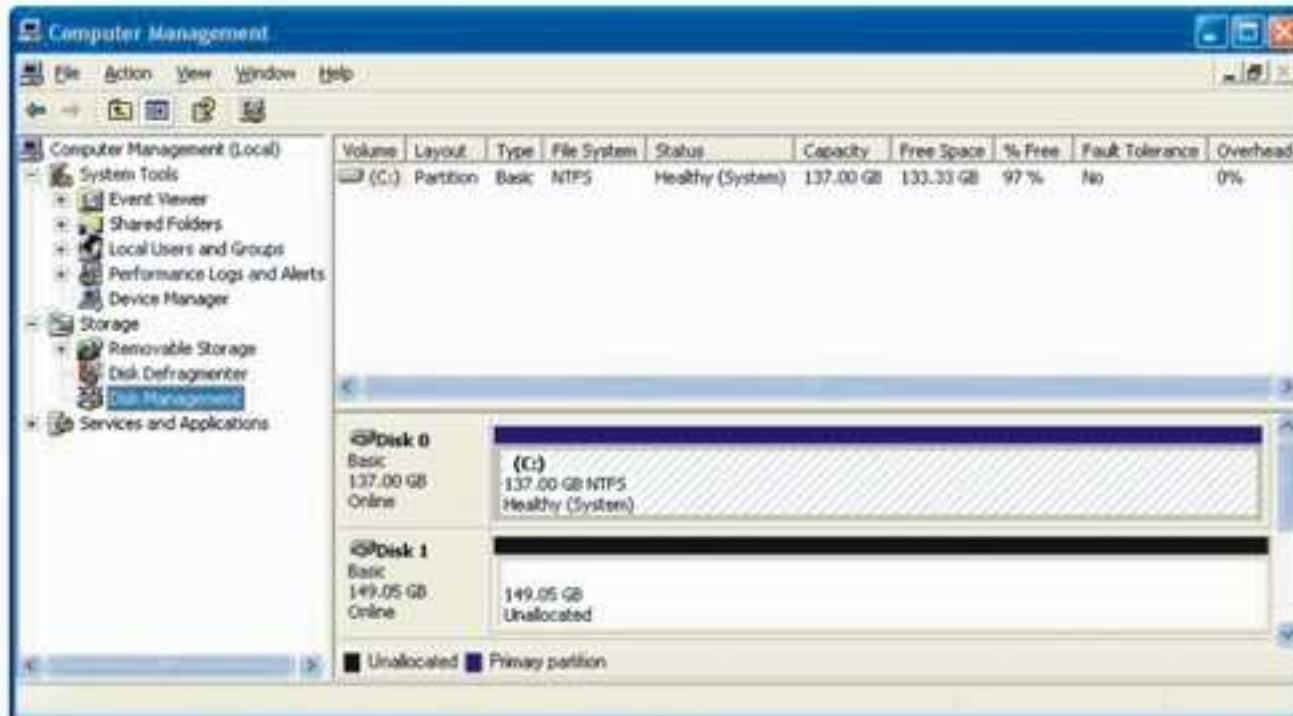
Advance Function Utility

Advance Function User Guide

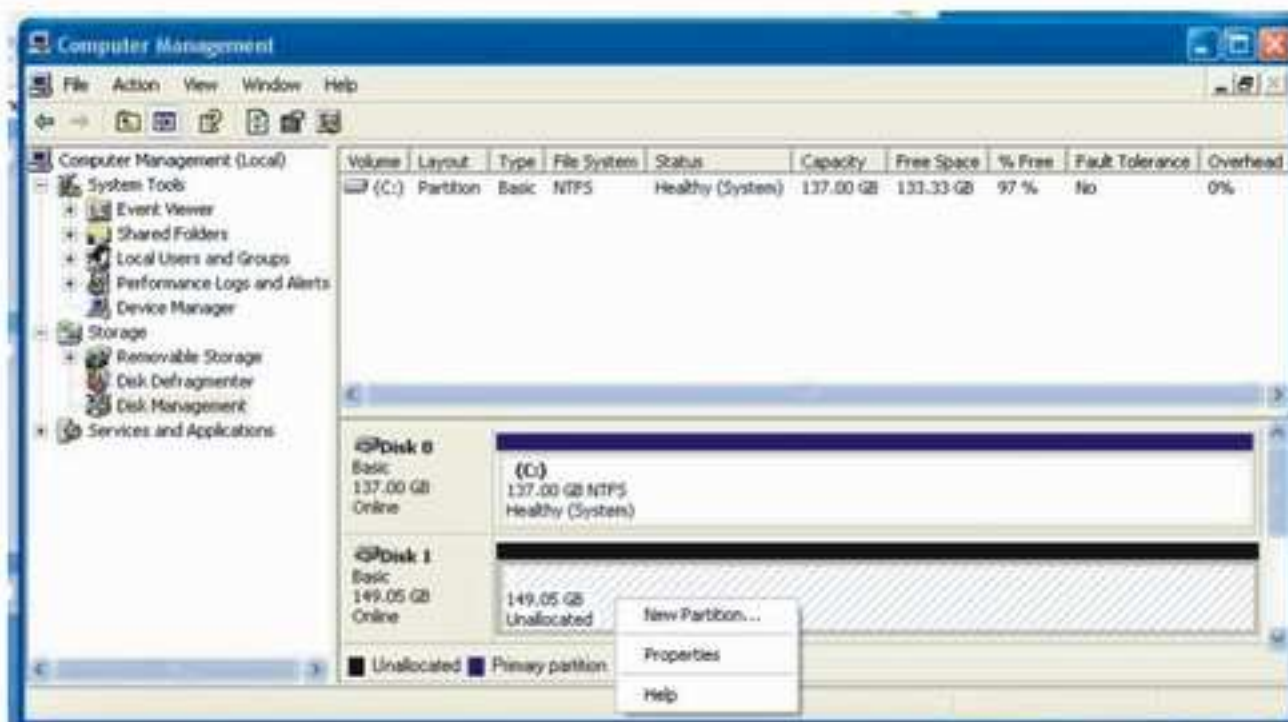
<< Back

7. Preparing the Hard Drives for Use

- 1). Right click on the My Computer icon and select Manage. In the left pane of the Computer Management window, click Disk Management.
- 2). In the bottom right pane of the Computer Management window, you should see your drives listed as unallocated. Click on the unallocated drive



and select New Partition. The New Partition Wizard will launch.



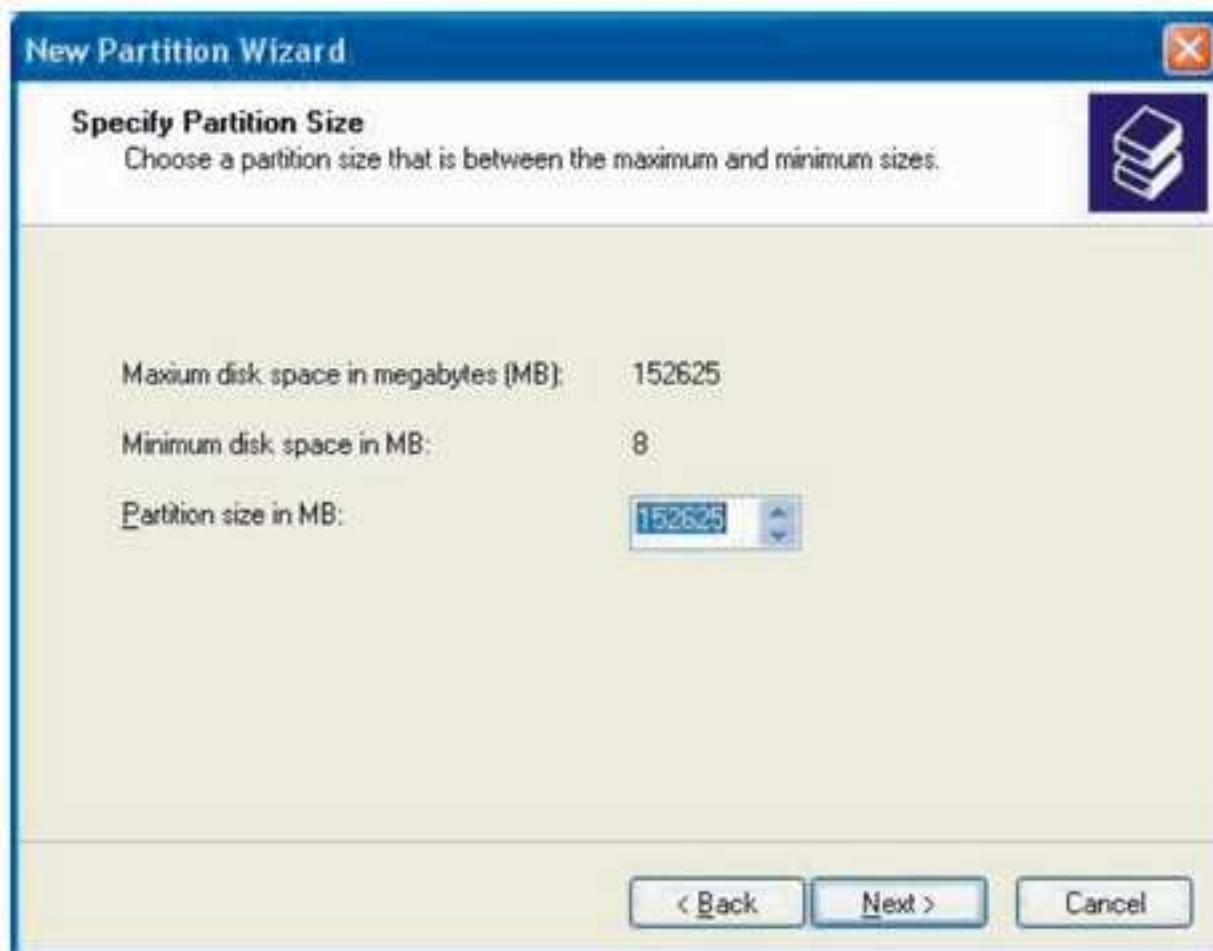
3).When the New Partition Wizard appears, click Next to continue.



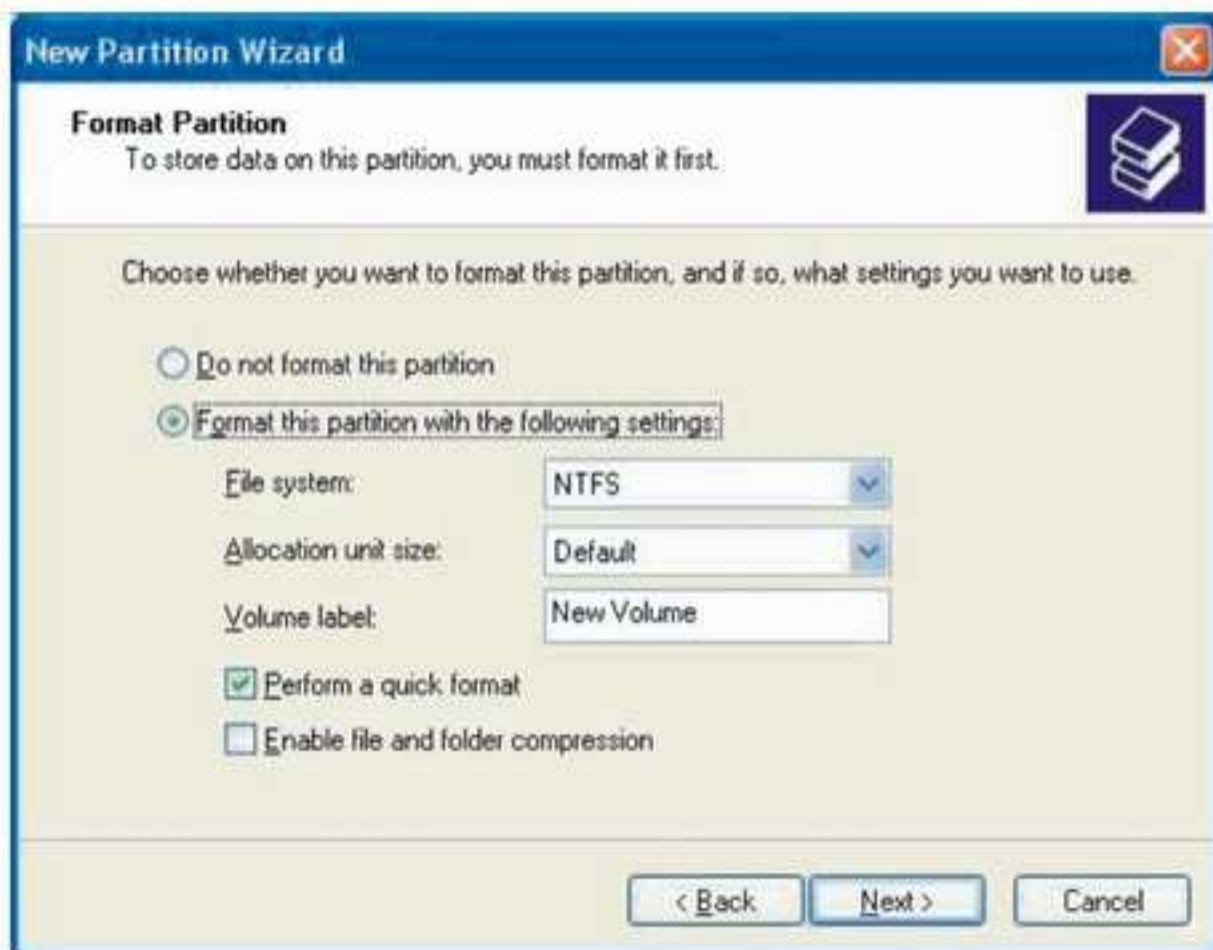
4).Select the partition type you wish to create by clicking on Primary or Extended, as appropriate. When you have made your selection, click Next to continue.



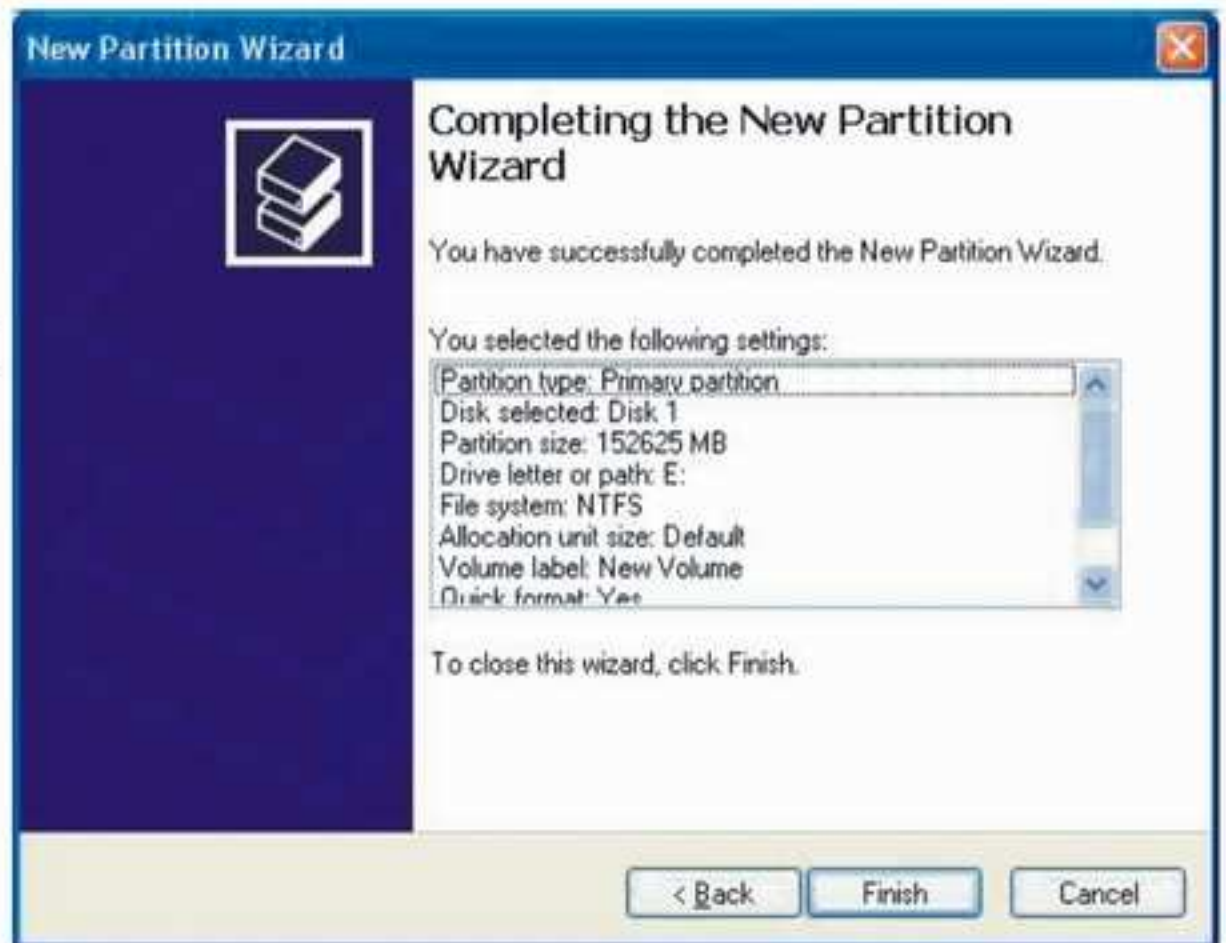
5).Specify the size of the partition you wish to create. You must select a partition size that is between the maximum and minimum sizes (typically the maximum disk space available). Once you have done so, click Next to continue.



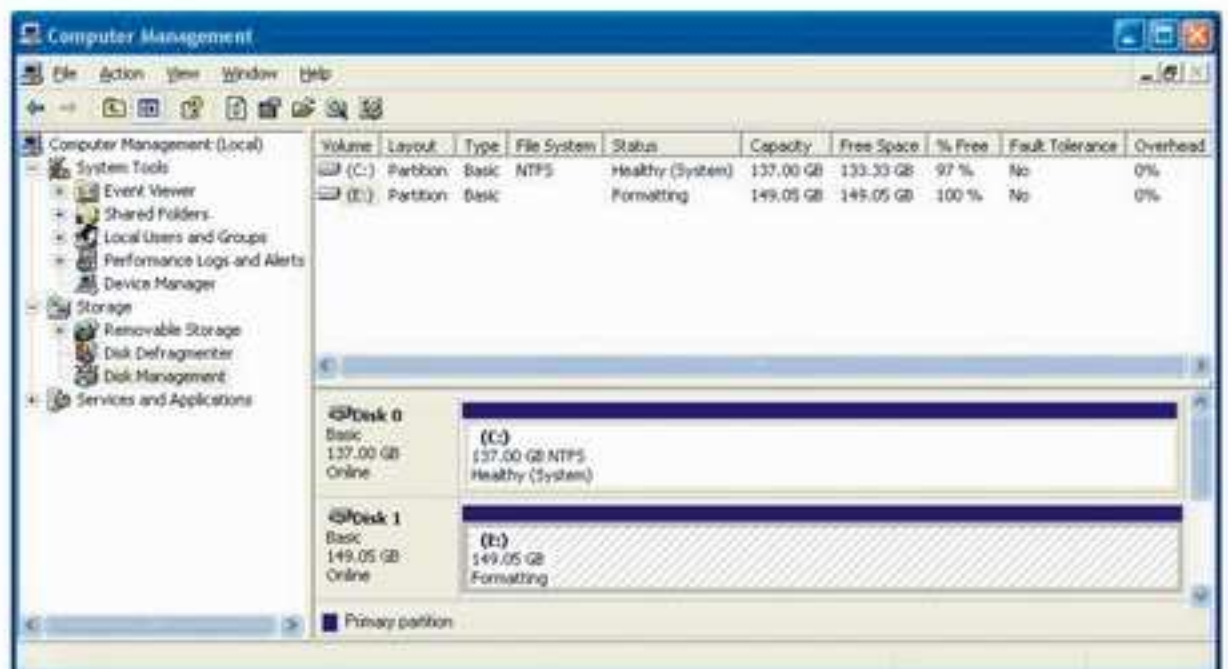
6).Select Format this partition with the following settings. Using the drop down buttons, select the file system, allocation unit size, and volume label you wish to use. Select Perform a Quick Format and click Next to continue.



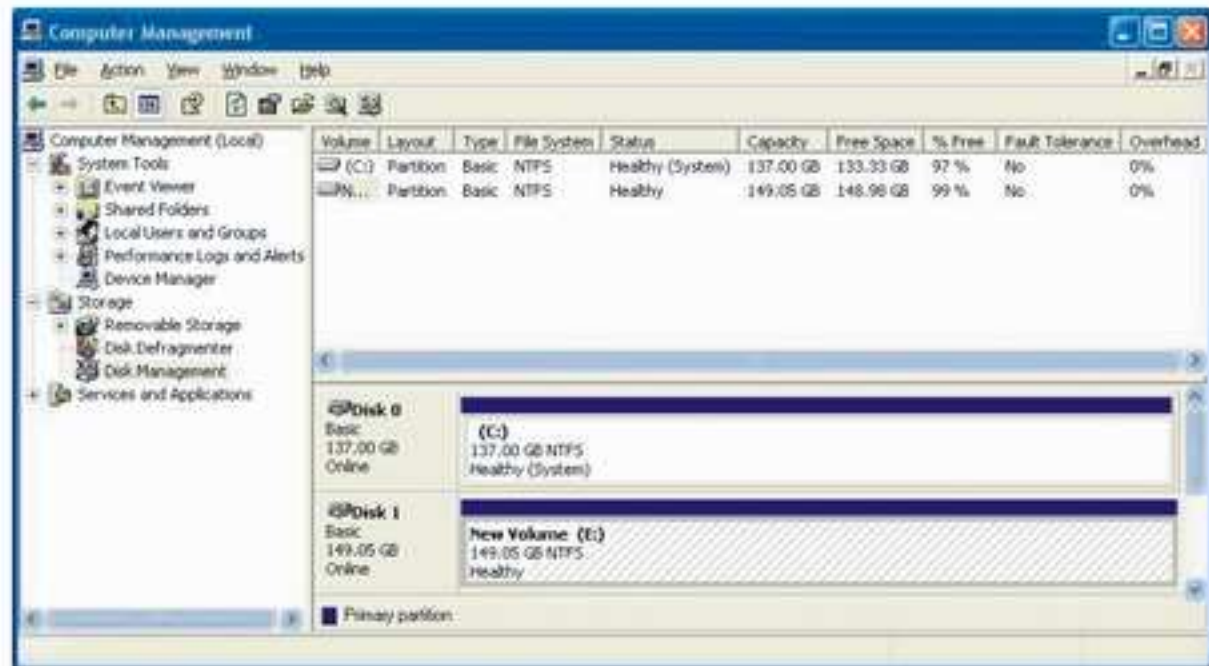
7).A notification window will appear indicating that you have successfully completed the New Partition Wizard. Click Finish to commence the formatting of the drive.



8).The status of the drive, as shown in the Computer Management window, will be updated to reflect the selections you have made. Please wait while the drive is being formatted.



9).Once the drive has been successfully partitioned and formatted, it will display as Healthy.



10).To access your newly partitioned drive(s), open My Computer. Your drive(s) should be displayed below the heading Hard Disk Drives.

