



MINI USB 2.0 BLUETOOTH WIRELESS ADAPTER

CONNECT YOUR PC TO OTHER BLUETOOTH DEVICES
(SUPPORTS VOICE & DATA)



USER MANUAL
BT-USBT

SABRENT USB BLUETOOTH ADAPTER

Add Bluetooth wireless technology to your Desktop or Notebook at a fraction of the size of normal Bluetooth USB adapters. Simply connect your Wireless Bluetooth Dongle to an available USB port to easily pair up to seven (7) Bluetooth devices, such as cell phones, PDAs, mice and keyboards. The Sabrent adapter features Bluetooth 2.0 EDR (Enhanced Data Rate) technology for transfer rates that are 3 times faster than traditional Bluetooth 1.1 and 1.2 adapters, data transfer up to 3Mbps.

FEATURES

- Share/Edit/Print documents via Bluetooth
- Enable wireless connectivity between a notebook computer and a cellular phone
- Access internet via Bluetooth Mobile phone with GPRS/ CDMA or Bluetooth-enabled PC with internet connection
- Connect a Bluetooth headset to your PC
- Supports up to 7 ACL connections and 3 SCO connections
- Built-in Link controller and Link Manager Protocol
- USB interface works with desktop and notebook computers

SYSTEM REQUIREMENTS

- Available USB port
- Windows XP, Windows VISTA, Windows 7
- Mac OS X v 10.1.2 and Higher
- Linux OS

PRODUCT LIST

- USB Bluetooth Adapter
- Driver/Software CD

SABRENT BT-USBT USER MANUAL

DRIVER INSTALLATION

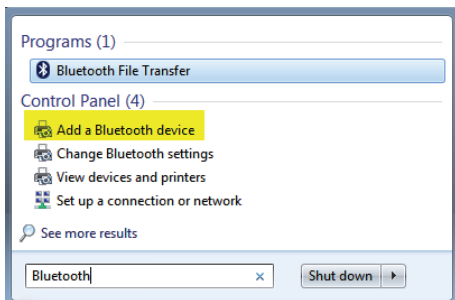
Note: This depiction is based on Vista/7, but under other operating systems, it may be slightly different.

1. Insert the Sabrent Bluetooth Adapter into an available USB port on your computer.
2. Windows Vista/7 will automatically find and install drivers for the Adapter. If Windows prompts you to search for latest drivers online, select OK to complete the driver installation.
3. At this point you should see the Adapter fully installed in Device Manager:



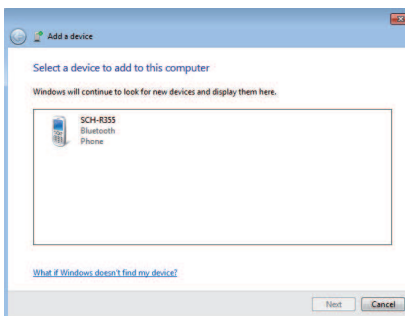
Networking Bluetooth Devices:

1. Windows Vista/7, click the Start button and type "Bluetooth" into the search box. This will bring up several options; select Add a Bluetooth device.

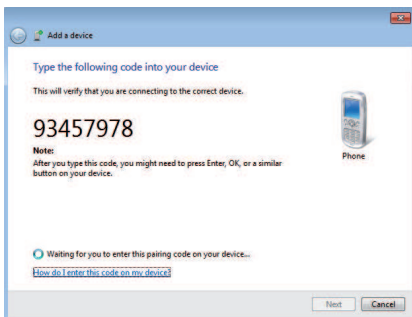


SABRENT BT-USBT USER MANUAL

2. Set up your Bluetooth device to Discovery mode. Your device will then appear in the list of available device.



3. Select the Device and select Next:



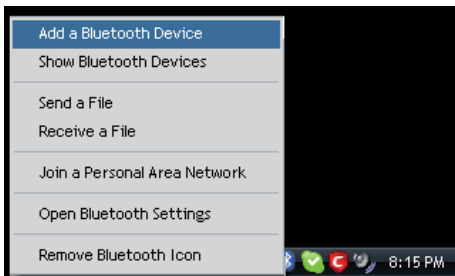
4. Your Bluetooth device will ask confirm that you want to pair the device to the network. You will have the option of using a code or not. (Please refer to the device's manual: most often the password will be 0000 or 1234.)



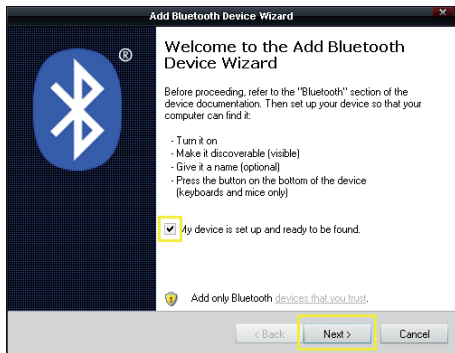
DRIVER INSTALLATION FOR WINDOWS XP:

1. Insert the Sabrent Bluetooth Adapter into an available USB port on your computer.
2. Windows XP will automatically find and install drivers for the Adapter. If Windows prompts you to search for latest drivers online, select OK to complete the driver installation.

3. At this point you should see a small Bluetooth icon in your System Tray next to your clock. Right click on the icon; this will open up a new menu. Click on Add a Bluetooth Device.

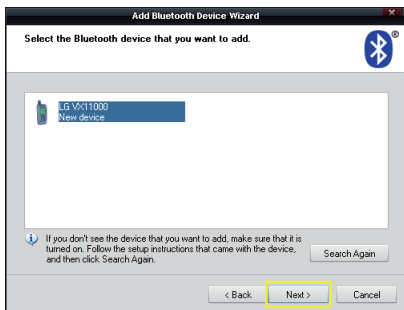


4. Click the Checkbox and Set up your Bluetooth device to Discovery mode. Click Next:

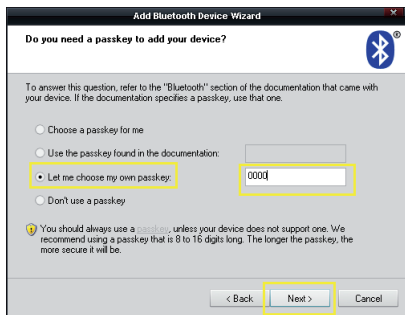


SABRENT BT-USBT USER MANUAL

5. Your device will then appear in the list of available devices. Select the Device and select Next:

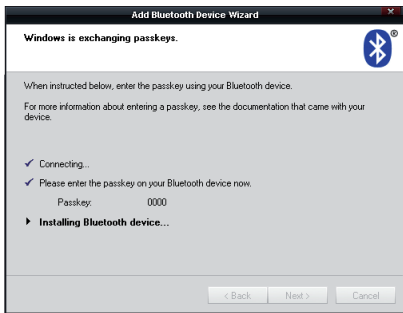


6. You will be given the option of using a code or not. Click on Let me choose my own passkey and type in either 0000 or 1234. Your Bluetooth device will confirm that you want to pair the device to the network. Type the same code into the device if necessary.



SABRENT BT-USBT USER MANUAL

7. Wait for the device to be fully installed.



DRIVER INSTALLATION FOR MAC OS X:

1. Insert the Sabrent Bluetooth Adapter into an available USB port on your computer.
2. Mac OS X will automatically find and install drivers for the Adapter. If OS X prompts you to search for latest drivers online, select OK to complete the driver installation.

Networking Bluetooth Devices:

1. Click the Apple button and select the Bluetooth button. This will bring up a new page:

2. Click on the Bluetooth button:



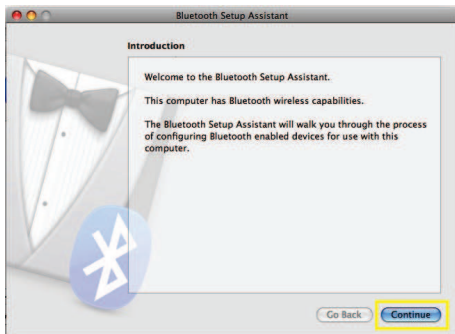
3. Click the checkbox to turn your Bluetooth device On.

4. Click on Set Up New Device:

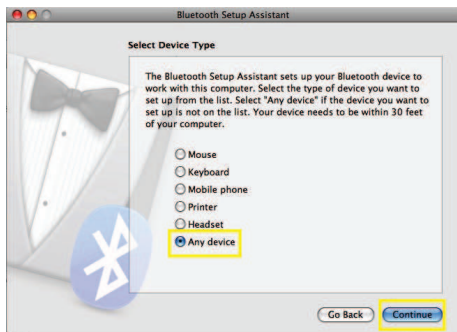


SABRENT BT-USBT USER MANUAL

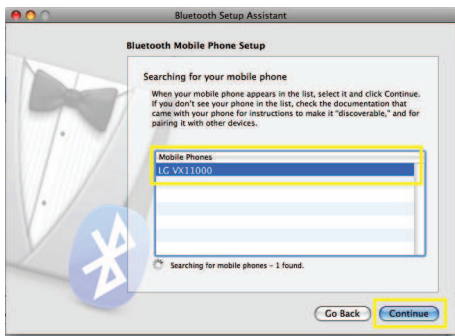
5. You should be prompted to the Bluetooth Setup Assistant; click Continue to go through the Setup:



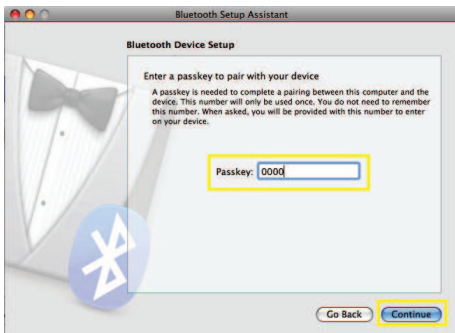
6. Under Device Type select Any Device and hit Continue:



7. Set up your Bluetooth device to Discovery mode. Your device will then appear in the list of available devices”



8. You will be prompted to enter a Passkey for your device. Your Bluetooth device will ask to confirm that you want to pair the device to the network. You will have to retype the same code on your device:



SABRENT BT-USBT USER MANUAL

