

# 2mm PROGRAMMING JUMPERS

## FEATURES

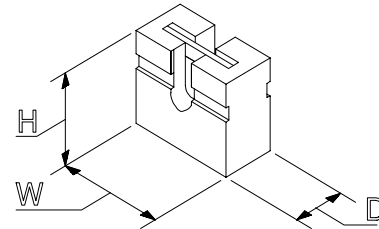
- Mates with 0,50mm (0.020") square or round posts on 2mm centers
- Side and end stackable
- Dual wipe contact design
- Reliable, cost effective alternative to switches
- Both closed and open top versions available

## STANDARD PART DIMENSIONS

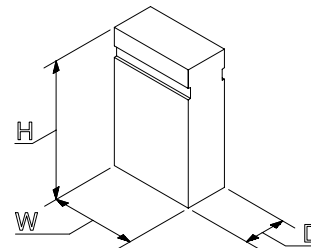
INSULATOR BODY		Open Top	Closed Top
<b>W</b>	WIDTH	3,95mm / 0.156"	3,95mm / 0.156"
<b>H</b>	HEIGHT	3,5mm / 0.138"	5,0mm / 0.195"
<b>D</b>	DEPTH	1,95mm / 0.077"	1,95mm / 0.077"
INSERTION DEPTH		Open Top	Closed Top
	Minimum	3,0mm / 0.115"	3,76mm / 0.148"
	Maximum	N/A	4,5mm / 0.177"
MATERIALS			
INSULATOR BODY		Glass Filled Polyester (UL94V-O)	
POST		Phosphor Bronze	

See SPECIFICATIONS and PERFORMANCE DATA for more detail

## OPEN TOP

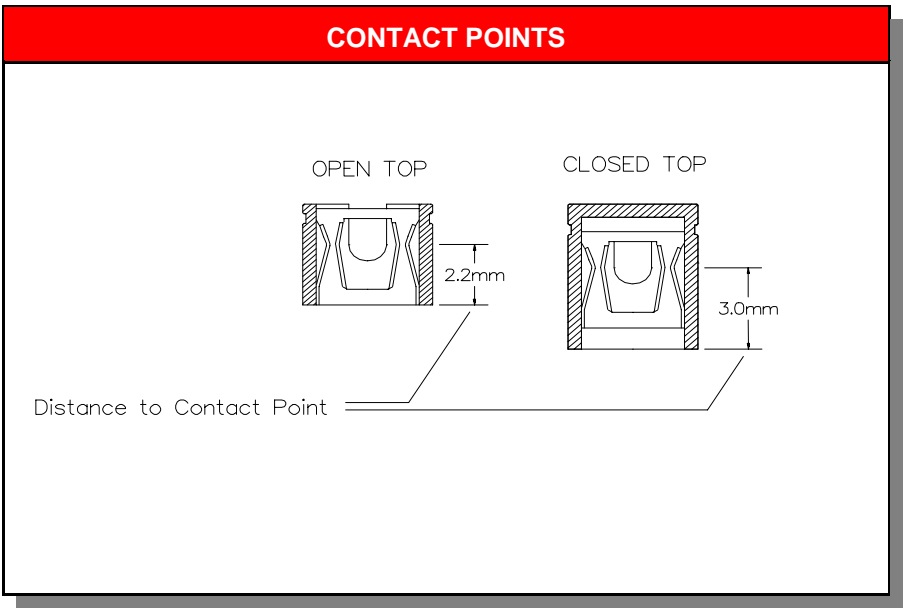


## CLOSED TOP



**SAMPLE HOTLINE: 1-800-676-7644**

<b>2,0mm (0.079") Centers To Mate With 0,50mm (0.020") Posts</b>	<b>HOW TO ORDER CRANE'S JNM SERIES</b>							
	<b>STANDARD PART NUMBER</b>							
<b>PRODUCT SERIES</b>	JNM				--			
<b>TOTAL NUMBER OF POSITIONS</b>	POSITIONS	02						
<b>NUMBER OF ROWS</b>	SINGLE		S					
<b>TYPE OF JUMPER</b>	STRAIGHT		S					
<b>CONTACT PLATING (See Specs At Bottom Of Page)</b>	G,T or H, F							
NOTE: Some platings may be subject to minimums.								
<b>BODY TYPE</b>	CLOSED TOP					C	B	
	OPEN TOP					O	B	



**SAMPLE HOTLINE: 1-800-676-7644**

# CRANE CONNECTORS - PLATING SPECIFICATIONS

PLATING OPTIONS		CONTACT AREA Inches (Millimeters)	PC TAIL Inches (Millimeters)	UNDERPLATE Inches (Millimeters)
<b>G</b>	Selective	15 $\mu$ " (0,00038) Gold	100 $\mu$ " (0,00254) Tin/Lead - Min	50 $\mu$ " (0,00127) Nickel - Min.
<b>T</b>	Tin / Lead	100 $\mu$ " (0,00254) Tin / Lead	100 $\mu$ " (0,00254) Tin/Lead - Min	50 $\mu$ " (0,00127) Nickel - Min.
<b>M</b>	Selective	50 $\mu$ " (0,00127) Gold	100 $\mu$ " (0,00254) Tin/Lead - Min	50 $\mu$ " (0,00127) Nickel - Min.
<b>H</b>	Selective	30 $\mu$ " (0,00076) Gold	100 $\mu$ " (0,00254) Tin/Lead - Min	50 $\mu$ " (0,00127) Nickel - Min.
<b>L</b>	Selective	10 $\mu$ " (0,00025) Gold	100 $\mu$ " (0,00254) Tin/Lead - Min	50 $\mu$ " (0,00127) Nickel - Min.
<b>F</b>	Selective	3 $\mu$ " (0,00008) Gold	100 $\mu$ " (0,00254) Tin/Lead - Min	50 $\mu$ " (0,00127) Nickel - Min.

## STANDARDS

ISO9001



Crane Connectors  
File No. A-3620

Registered by UL to ISO9001 under UL's accreditation by Raad voor de Certificatie (RvC), the Dutch Council for Certification.

**ENGINEERING NOTE:** The information presented in this catalog page is accurate to the best of our knowledge. Due to ongoing efforts to advance design and material performance, the information is subject to change without notice.

**SAMPLE HOTLINE: 1-800-676-7644**

**CRANE CONNECTORS** • 4700 Smith Road • Cincinnati, Ohio 45212 USA • E-mail Address: info@craneconnectors.com  
Phone: (513) 631-4700 • Fax (513) 631-5700 • Toll Free US (800) 676-7644 • Canada (800) 420-7310