

Exclusively designed for parallel printers

# Print Server

## SX-PS-3200P



Multiple computers can share one parallel printer

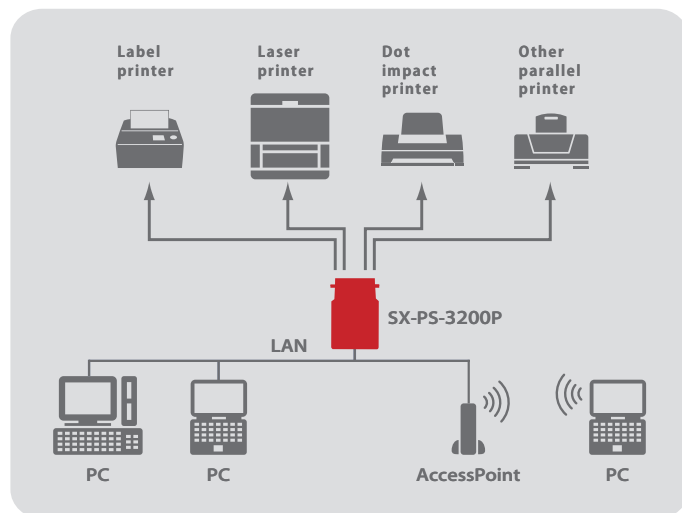
## High print server standard for business use

### Outline

10BASE-T/100BASE-TX supported SX-PS-3200P allows easy over-the-network printer sharing. Just directly connect it to a printer with a parallel interface. This also supports IPv6 - next generation protocol - offering an easy and simple network printing solution for business.

### Features

- 1 **Share a parallel printer over the network.**  
Multiple computers can share a parallel printer over the network.

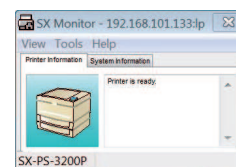


- 2 **No printer cable is required**  
As the SX-PS-3200P can be directly connected to a parallel interface, no printer cable is required.

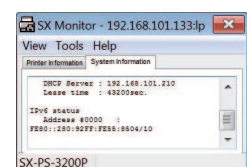
- 3 **Client software for printing is also available**  
"SX-Print" - client software for printing comes with the SX-PS-3200P, makes printing more stable than OS standard printing protocols.

### 4 Remote status checking

"SX Monitor" - printer status monitoring software - allows to check the printer status such as "paper out" or "printing" in a pop-up message at real time.



Printer information



System information

### 5 IPv6 supported

IPv6 - next generation protocol - is supported (IPv4/IPv6 Dual Protocol Stack supported) Even in the IPv6 only environment, SX-PS-3200P can be set up and allows printing. Note: IPv6 is not supported on Windows XP.

### 6 Security feature (IP filter)

Setting an IP address range accessible to SX-PS-3200P, you can control which computers to use printers or MFPs.

### Technical data

Product name	SX-PS-3200P
Article number	E1271
Network interface	10BASE-T, 100BASE-TX (automatic detection)
Printer interface	Parallel interface (36pin amphenol/IEEE1284 compliant)
Supported protocol	TCP/IP
Supported OS	Windows 8, Windows 7, Windows Vista, Windows XP, Windows Sever 2012, Windows Sever 2008, Windows Server 2003, UNIX/Linux
Configuration method	Set-Up utility, Web Browser, TELNET, SNMP
Dimensions	W:62.0mm x D:91.1mm x H:22.5mm
Weight	75g
Approvals	VCCI/FCC/CE Class-B
Contents of package	Main unit, power supply, CD-ROM (setup program, user manual), setup instructions, warranty card

silex technology is a registered trademark of silex technology, Inc. Other products or trade names are the registered trademarks of their owners. Changes to technical specifications and data may be made with no prior notice. © 2013 silex technology europe GmbH. All rights retained.

### Global marketing and support locations:



**Europe**  
silex technology europe GmbH  
+49-2151-65009-10  
Toll-free hotline in Germany:  
0800-7453938  
www.silexeurope.com  
> contact@silexeurope.com

**Japan**  
silex technology, Inc.  
+81-774-98-3782  
www.silex.jp  
> support@silex.jp

**USA**  
silex technology america, Inc.  
+1-801-747-0656  
Kostenfreie Hotline USA:  
866-765-8761  
www.silexamerica.com  
> contact@silexamerica.com

