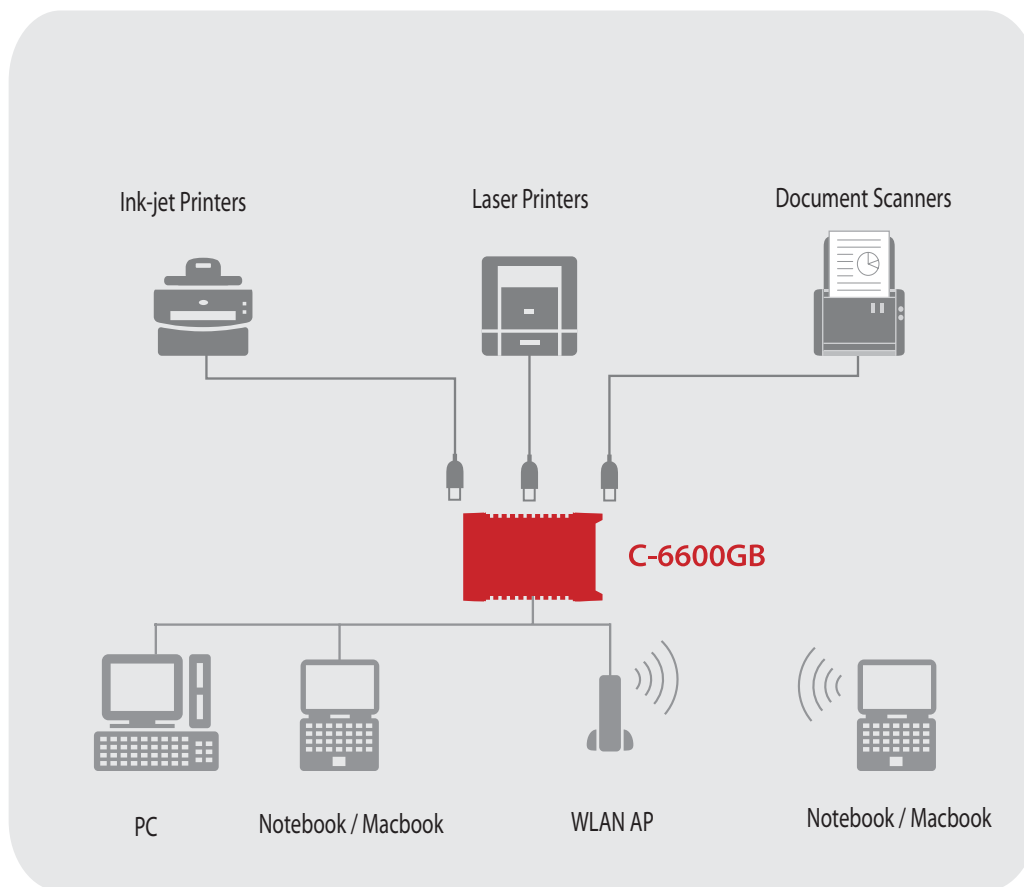


Hi-Speed Gigabit Print- and Scan Server for Canon **C-6600GB**



Ideal for	Canon PIXMA Ink-jet	Canon imageCLASS CAPT Laser Printers	Canon PIXMA Multi-Function Printers	Canon DR-series Document Scanners
-----------	---------------------	--------------------------------------	-------------------------------------	-----------------------------------

Ideal solution to share Canon printers + scanners over Gigabit-Ethernet



The C-6600 GB provides convenience and flexibility to share your Canon Multi-function-printers and document scanners over Gigabit Ethernet

Like the rest of silex's C-series products, the C-6600GB is developed in close association with Canon.

Enjoy all functions of your Canon printers and Canon scanners over the network - as if they were locally connected.

Key features

- ⦿ Printing, scanning, memory card storing and PC fax over LAN with Gigabit speed.
- ⦿ Compatible with most Canon Multi-Function-printers and document scanners.
- ⦿ Canon printer status monitoring support.
- ⦿ Support for scan button manager "CaptureOnTouch".

- Bi-directional communication with printers
- MFP/AIO-Server
- Printserver
- Scanserver
- Storage-server
- Multi-language Support
- USB 2.0 Hi-Speed
- IP Filtering Enhanced Security
- 1 USB-Port
- Canon-Status Monitor
- 1000/100/100 Mbit
- IPP Internet Printing Protocol

Share your Canon printer and scanner over Gigabit Ethernet

Features

Up-to-date Gigabit technology

The C-6600GB has a Gigabit Ethernet interface. The device also supports the 10 and 100 Mbit standard.

Convert your Canon -MFP and -printer into a network resource

With the C-6600GB a Canon USB- or -Multifunction printer can be shared with colleagues or family members across the home or company network.

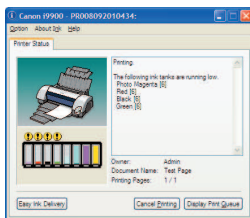
Network printing, scanning, memory card sharing and PC Fax.

The C-6600GB shares all functions of your Canon devices over the network

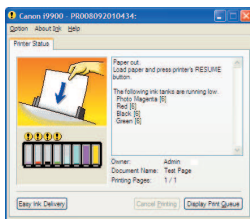
Real-time Canon printer status monitoring support

The convenience of the Canon status monitoring function is available on the network as if it was locally connected to your PC. You can remotely monitor various defined printer operating conditions such as ink levels and paper empty on a real-time basis.

PIXMA All-In-One printer

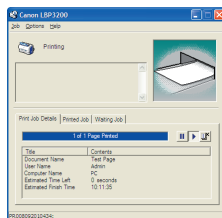


▲ printing

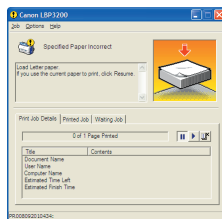


▲ Ink cartridge empty / Paper out

CAPT Laser printer



▲ printing



▲ paper out

With Device Server feature also compatible with Mac OS

To enable you to use your Canon printer, your document Scanner or other USB devices also on Mac OS the C-6600GB has the "device server mode" feature.

That means that you can use the device with the software SX-Virtual Link as a Device Server. You can connect to your USB device over the network and use it as if it was locally connected. This feature is of course also available on Windows OS. Configuration of this feature is available via webinterface.

Maximize productivity of your scanner

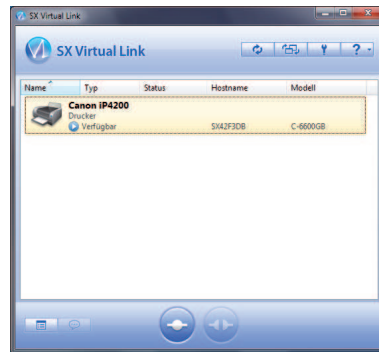
With help of the C-6600GB several users can share a high quality Canon document scanner over the network. The C-6600GB also shares a scanner for a virtual machine (VM).

The software SX-Virtual Link supports "request of use" of a scanner that is already connected to another user and can disconnect the first user upon request after a time out to make the scanner available for the next user.

Application Example

Software SX- Virtual Link

Client software for the virtual USB connection in Device Server mode and for scanners



Specification

Supported Operating Systems	Windows 8.1,8,7,Vista, XP, Server 2003 and 2008 (32/64 Bit);Mac OS X v10.3-10.6
Supported Protocols	TCP/IP
Configuration	Quick Setup,Webbrower, telnet, AdminManager
Device Interface	1x USB 2.0 Hi-Speed (A-Type)
Network Interfaces	10/100/1000 Mbps (auto-detection)
Current to USB connection	up to 2000 mA
Power Supply	12V, universal AC adapter (AC 100-240 V)
Power Consumption	3W + USB-power
Languages (setup program)	German, English, French, Spanish, Italian, Portuguese, Chinese, Japanese
Guarantee	2 years
Approvals	FCC, CE, VCCI Klasse B
Package contents	C-6600GB, setup guide, AC adapter, warranty booklet, CD-ROM, manual
Dimensions	60 x 100 x 28mm
Weight	100g

Software

Deviceserver-Setup	Wizard style quick setup utility
CXPrint	Client Software for Windows Printing
SX Virtual Link	For networking USB devices



sillex technology,Inc.



sillex technology,Inc.
Design & Manufacture Center

Canon® is a registered trademark of Canon Inc. sillex technology is a registered trademark of sillex technology, Inc. Other company or product names may be trademarks or registered trademarks of their respective owners. Technical information and specifications are subject to change without notice. ©2010 sillex technology europe GmbH. All rights reserved.

Global offices:



Europe
sillex technology europe GmbH
+49-2151-650090
Toll-free Hotline in Germany:
0800-7453938
www.sillexeurope.com
contact@sillexeurope.com

Japan
sillex technology, Inc.
+81-774-98-3782
www.sillex.jp
contact@sillex.jp

USA
sillex technology america, Inc.
+1-801-748-1199
Toll-free Hotline in the USA:
866-765-8761
www.sillexamerica.com
contact@sillexamerica.com

China
sillex technology beijing, Inc.
+86-10-6440-3958
www.sillex.com.cn
contact@sillex.com.cn