

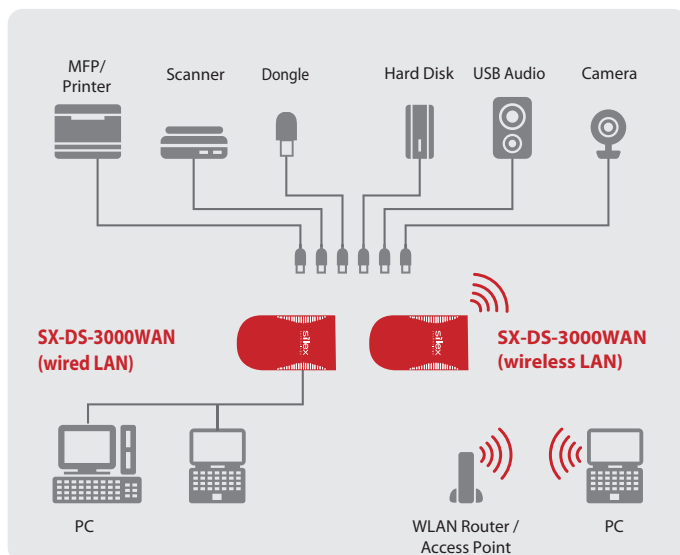
# USB Device Server with High-Speed-WLAN-Support SX-DS-3000WAN



USB Device Server with up to 300Mbit WLAN at 2,4 and 5 GHz band

The fast SX-DS-3000WAN is a powerful USB device server for wireless or wired networks. The USB Virtual Link technology from silex technology makes any kind of USB device network-capable in the simplest of manners. Printers, scanners, hard drives, dongles and card readers can be used over the network via a total of 2 USB Hi-Speed ports with the SX-DS-3000WAN through a wireless or wired network, just as though they were connected to the local computer. Multiple people can use the same USB device one after the other, and it can be located further away from them.

## Connection example



## Features

### Supports IEEE 802.11 a/b/g/n

The device supports IEEE 802.11 a/b/g/n. It is suitable for fast wireless data transfer using WLAN (2.4 and 5-GHz band, up to 300 Mbps) for business or home use.

### Support for Gigabit Ethernet and USB 2.0 HiSpeed

It also provides Gigabit Ethernet (1000 BASE-T) and two USB 2.0 Hi-Speed ports. This means it can also be used in environments without a WLAN. The simultaneous use of wireless LAN (WLAN) and wired LAN is not supported.

### Easy setup

The SX-DS-3000WAN supports WPS (Wi-Fi protected setup), permitting the fast, easy setup of a secure connection to the WLAN router or access point.

### Print server function

Supports standard TCP/IP printing (LPR/RAW). The product supports the normal network printing protocols for RAW mode and LPR mode. When the product is connected to a printer, the standard Windows print function can be used to print.

## Function for automatic printer connection

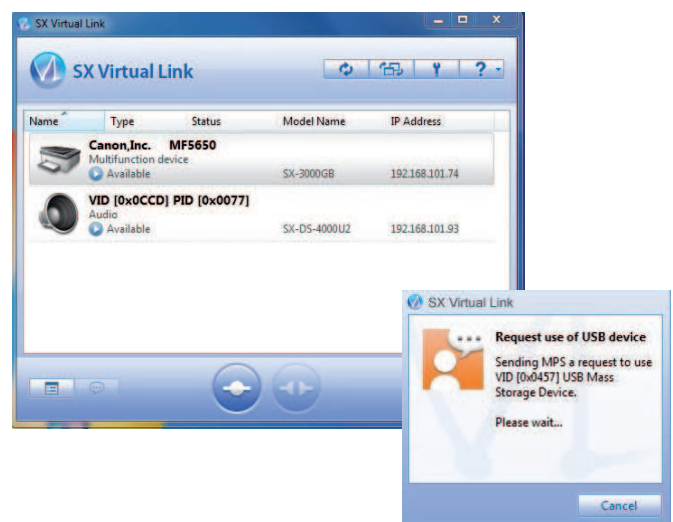
By setting up this function using SX Virtual Link, a print job is automatically detected for a configured printer: The connection to the printer is established, the print process is executed and the connection is released again. Thus the device server function simultaneously includes a print server function that is also suitable for GDI printers.

## What is a USB Device Server?

It is a network device that uses the USB Virtual Link technology to make USB devices network-ready. Thanks to the USB Virtual Link technology from silex technology, a variety of USB devices can be used on a network, just as though they were connected with a USB cable.

## What is SX Virtual Link?

SX Virtual Link is a software application for the use of the USB Virtual Link technology. With SX Virtual Link, the computer can make a remote connection over the network to any USB device connected to the USB device server.



The network is searched for the product and the connected USB devices; the search results are shown in an overview on the main screen.

If another user is using a shared USB device, a request for disconnection can be sent. It can also be specified that failure to respond to this request will automatically lead to a disconnection after a timeout.

## Features, continued

**With the SX-DS-3000WAN you can connect** a variety of USB devices over the network, like USB dongles, MP3 players, CD/DVD/Zip drives, USB drives and other storage media, scanners, printers, digital cameras, USB sound cards, USB LCD monitors, telescopes, mixing consoles, and many more. The productivity of USB devices is increased by their availability as network resources.

**Virtual environments:** The USB Device Server is compatible with the following virtualisation programs and environments: VMware, Citrix, Microsoft Terminal Server, and Hyper-V.

**No special drivers or applications** are needed to use the USB devices: The drivers and applications that worked locally will continue to work.

**For manufacturers:** silex technology offers manufacturers the USB Virtual Link technology as an OEM product. On the hardware side there is an embedded module and on the software side there are two powerful SDK systems available to integrate the mature USB Virtual Link technology into any product, such as routers, access points, NAS systems or home gateways.



**Two USB 2.0 Hi-Speed ports and control LEDs;**

using an optional USB hub, a maximum of 15 USB connections are possible



**Gigabit Ethernet connection and WPS Button**

## Other USB Device Servers

Devices such as printers, scanners and dongles are connected over the network.

### High-performance USB device server SX-DS-4000U2

- 10 BASE-T/100 BASE-TX/1000 BASE-T (automatic detection)
- Processor power of 800 MHz
- USB 2.0 Hi-Speed-(Typ A)-Port × 2
- Support for isochronous transfer (full speed/Hi-Speed)
- Print server function:  
Supports standard TCP/IP printing (LPR/IPP/RAW)



Win Mac

### USB Device Server with Gigabit support SX-3000GB

- 10 BASE-T/100 BASE-TX/1000 BASE-T (automatic detection)
- 2x USB 2.0 Hi-Speed-(Typ A)-Port
- Processor power of 250 MHz
- Print server function:  
Supports standard TCP/IP printing (LPR/IPP/RAW)



Win Mac

## Technical specification

|                             |   |
|-----------------------------|---|
| Product name                | SX-DS-3000WAN   |
| Part number                 | E1237   |
| Wired LAN                   | 10 BASE-T/100 BASE-TX/1000 BASE-T (automatic detection)   |
| Wireless LAN (WLAN)         | IEEE 802.11a/b/g/n, built-in antenna (2T2R)   |
| Device interface            | USB 2.0 Hi-Speed-(Typ A)-Port × 2 *1  |
| WLAN security               | WEP(64/128), WPA-PSK(TKIP/AES), WPA2-PSK(AES)   |
| Operating systems supported | Windows 8.1,8.7 (32/64bit), Vista (32/64bit), XP, 2000, Windows Server 2012,2008,2003 (32/64bit - R1/R2). *<br>MacOS X [ PowerPC : Ver 10.3x ~ Ver 10.5x<br>Intel : Ver 10.4.4 ~ Ver 10.9.x ] * |
| Protocols supported         | TCP/IP  |
| Configuration               | Setup program, Webbrowser, WPS  |
| Dimensions                  | B: 126,4 mm × D: 71,5 mm × H: 24,2 mm ( ±2 mm)  |
| Weight                      | 105 g   |
| Maximum power consumption   | 2,5 W (5 V DC 0,5 A) without USB bus power supply   |
| Contents of package         | Main unit, power supply, CD-ROM (setup program, user manual), setup instructions  |
| Approvals                   | VCCI class B / FCC class B / CE class B   |

\*1 The bus power supply for both connections together is 1 A.

\* The current technical data can be found on our Web site at [www.silexeurope.com](http://www.silexeurope.com).

## High-Speed-WLAN USB Device Server



**SX-DS-3000WAN**

## About silex

Since 2000, silex technology europe GmbH has been a subsidiary of the Japanese company silex technology, Inc. The parent company in Japan has been involved in development and production since 1973. Thus silex technology can look back on nearly 40 years of experience and quality work. In addition to the central company headquarters in Kyoto, there are locations in Tokyo, the USA, China and Europe.

Today, the silex group is not only a world market leader in integrated network printing technology, but also a leading supplier of connectivity in the areas of USB, serial and WLAN. Many well-known manufacturers of computer peripherals rely on the technologies of silex technology and use them as OEM suppliers for their own products.

Their product line includes print, USB and serial device servers, as well as modular WLAN solutions. In addition to mature technologies and quality products, the company also offers a complete ranges of services, such as lifetime free support by telephone, email or remote access for all customers.

All rights retained.



JQA-QMA2667  
silex technology, Inc.



JQA-EMS813  
silex technology, Inc.  
Design & Manufaktur Center

silex technology is a registered trademark of silex technology, Inc. Other products or trade names are the registered trademarks of their owners. Changes to technical specifications and data may be made with no prior notice. © 2012 silex technology europe GmbH. All rights retained.

## Global marketing and support locations:

**Europe**  
silex technology europe GmbH  
+49-2151-65009-10  
Toll-free hotline in Germany  
0800-7453938  
[www.silexeurope.com](http://www.silexeurope.com)  
> [contact@silexeurope.com](mailto:contact@silexeurope.com)

**Japan**  
silex technology, Inc.  
+81-774-98-3782  
[www.silex.jp](http://www.silex.jp)  
> [support@silex.jp](mailto:support@silex.jp)

**USA**  
silex technology america, Inc.  
+1-801-747-0656  
Kostenfreie Hotline USA:  
866-765-8761  
[www.silexamerica.com](http://www.silexamerica.com)  
> [contact@silexamerica.com](mailto:contact@silexamerica.com)

**China**  
silex technology beijing, Inc.  
+86-10-8497-1430  
[www.silex.com.cn](http://www.silex.com.cn)  
> [contact@silex.com.cn](mailto:contact@silex.com.cn)

