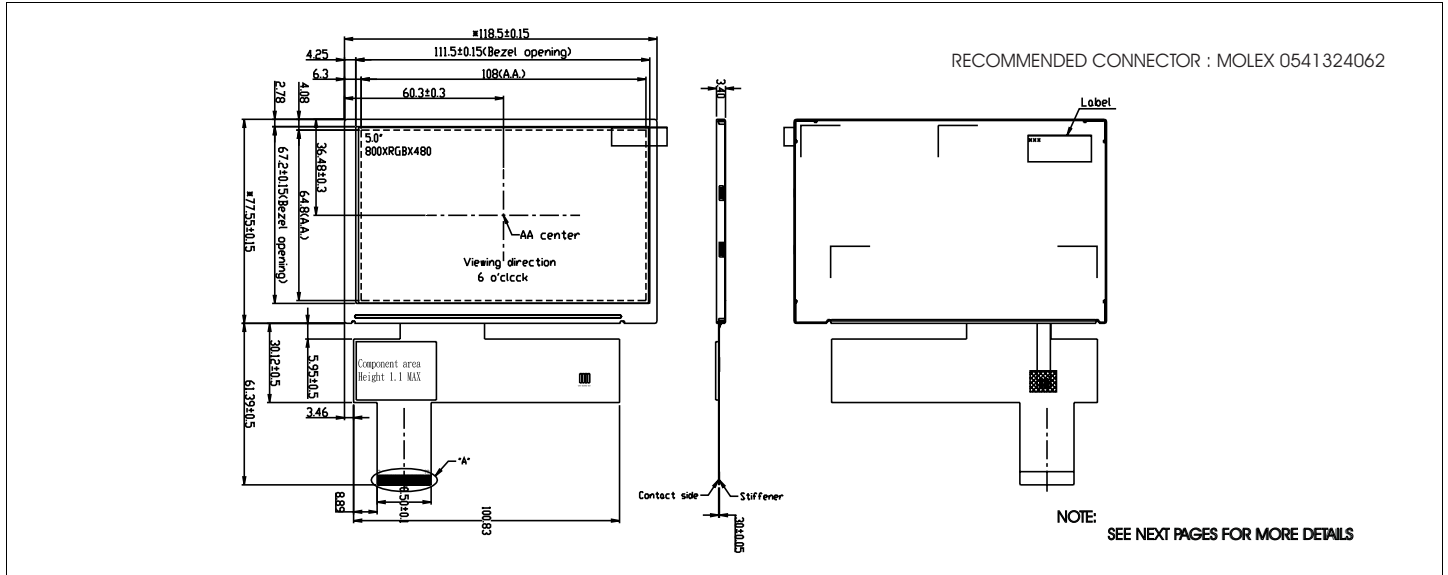


HDA500-GH

Dimensional Drawing

5", WVGA(800X480) TFT, Transmissive, Color, White LED Backlight



Features

- Viewing Angle(H/V).....150/130 degrees
- High Contrast.....600.
- Fast Response Time.....10 msec
- Built-in DC-DC Converter
- Built-in Controller.....none
- Touch screenoptional
- High Brightness500 Cd/m

Electrical Characteristics (VDD=3.3±0.125V 25°C)

PARAMETER	SYM	CONDITION	MIN	TYP	MAX	UNIT
OPERATING VOLTAGE	V _{DD}	-	3.0	3.3	3.6	V
INPUT HIGH VOLTAGE	V _{HI}	-	0.7V _{DD}	-	V _{DD}	V
INPUT LOW VOLTAGE	V _{LI}	-	0	-	0.3V _{DD}	V
OPERATING CURRENT	I _{DD}	-	-	220	-	mA
LED OPERATING VOLTAGE	V _{LED}	-	-	23.1	-	V
OPERATING CURRENT	I _{FLED}	-	-	40	-	mA
POWER CONSUMPTION	P _D	-	-	924	-	mW
BRIGHTNESS	L	-	400	500	-	cd/m ²

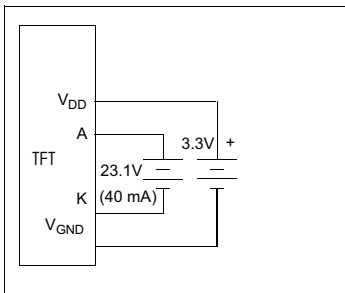
Physical Data

- Module Size.....118.5W x77.55H x 3.4T mm
- Viewing Area Size.....111.5W x67.2 H mm
- Dot Pitch.....0.135W x 0.135H mm
- Weight.....62g

Pin Connections

PIN NO.	SYMBOL	FUNCTION
1	VLED -	LED Cathode
2	VLED +	LED Anode
3	GND	Ground
4	VDD	+ 3.3V Power Supply
5	R0	Red Data Bit 0
6	R1	Red Data Bit 1
7	R2	Red Data Bit 2
8	R3	Red Data Bit 3
9	R4	Red Data Bit 4
10	R5	Red Data Bit 5
11	R6	Red Data Bit 6
12	R7	Red Data Bit 7
13	G0	Green Data Bit 0
14	G1	Green Data Bit 1
15	G2	Green Data Bit 2
16	G3	Green Data Bit 3
17	G4	Green Data Bit 4
18	G5	Green Data Bit 5
19	G6	Green Data Bit 6
20	G7	Green Data Bit 7
21	B0	Blue Data Bit 0
22	B1	Blue Data Bit 1
23	B2	Blue Data Bit 2
24	B3	Blue Data Bit 3
25	B4	Blue Data Bit 4
26	B5	Blue Data Bit 5
27	B6	Blue Data Bit 6
28	B7	Blue Data Bit 7
29	DGND	Ground
30	DCLK	Data Clock
31	DISP	Display ON/OFF (H/L)
32	HSYNC	Horizontal Sync
33	VSYNC	Vertical Sync
34	DE	Data Enable
35	NC	No Connect
36	GND	GND
37-40	NC	No Connection

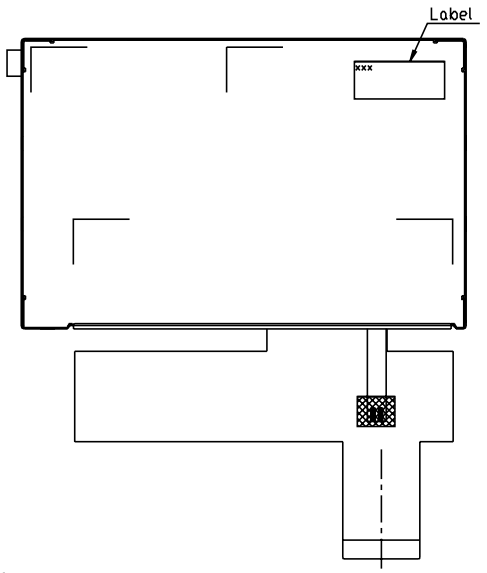
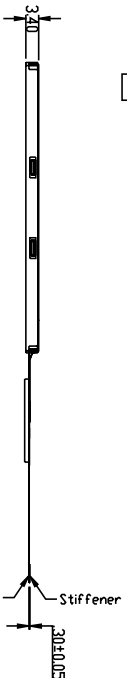
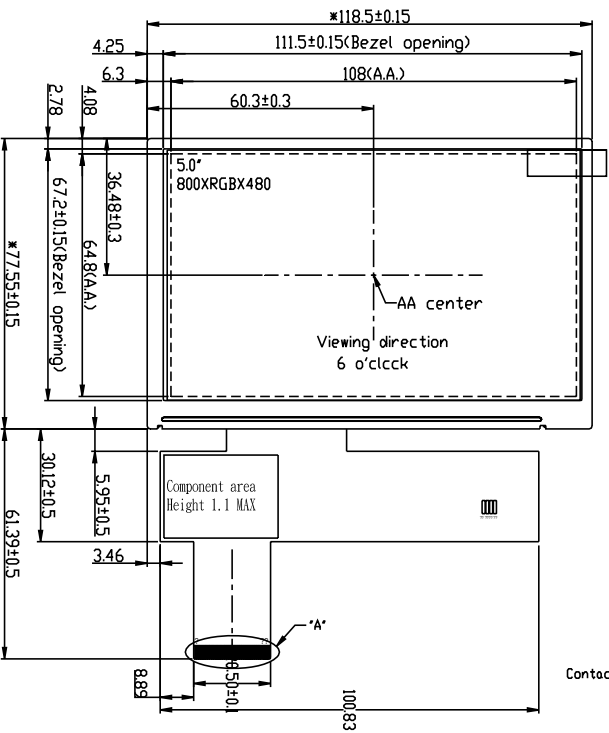
Power Supply



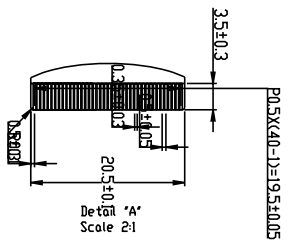
Absolute Maximum Ratings

PARAMETER	SYMBOL	MIN	MAX	UNIT
SUPPLY VOLTAGE	V _{DD}	-0.5	5.0	V
BACKLIGHT CURRENT (LED)	I _{LED}	-	50	mA
INPUT VOLTAGE	V _{IN}	-0.3	V _{DD} +0.3	V
OPERATING TEMPERATURE	T _{OP}	-20	70	°C
STORAGE TEMPERATURE	T _{STG}	-30	80	°C

8. Dimensional Outlines



FPC PIN ASSIGNMENT			
NO	SYMBLE	NO	SYMBLE
1	VLED -	21	B0
2	VLED +	22	B1
3	GND	23	B2
4	VDD	24	B3
5	R0	25	B4
6	R1	26	B5
7	R2	27	B6
8	R3	28	B7
9	R4	29	DGND
10	R5	30	DCLK
11	R6	31	DISP
12	R7	32	HSYNC
13	G0	33	VSYNC
14	G1	34	DE
15	G2	35	NC
16	G3	36	GND
17	G4	37	NC(XR)
18	G5	38	NC(YB)
19	G6	39	NC(XL)
20	G7	40	NC(YT)

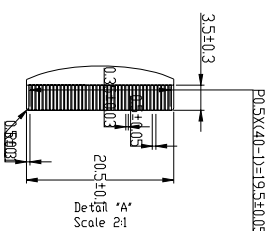
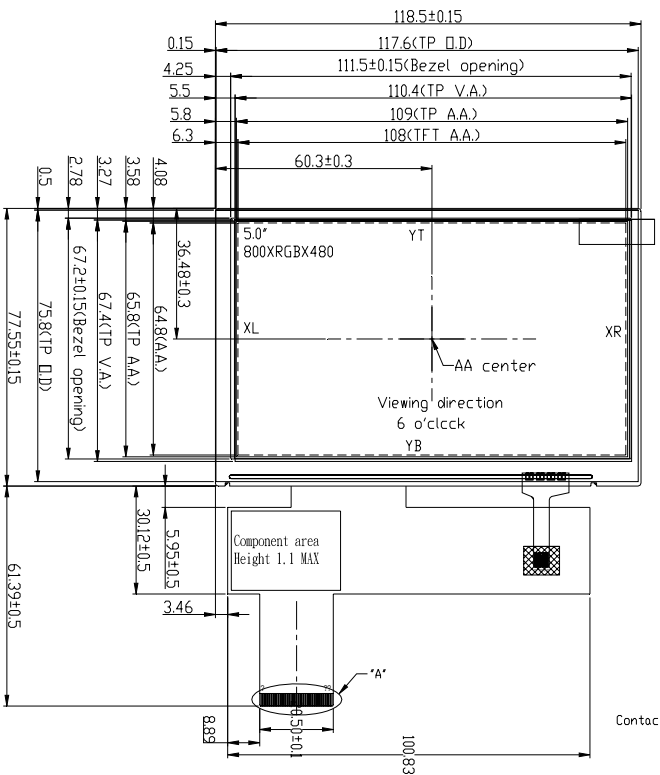
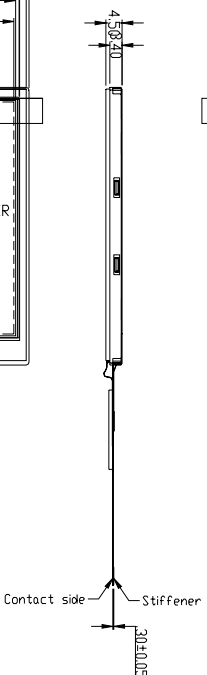
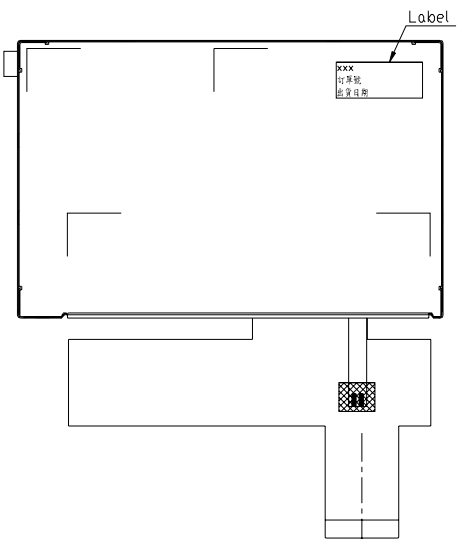


PINTRONIX

With TOUCH SCREEN

9. Dimensional Outlines

FPC PIN ASSIGNMENT			
NO	SYMBLE	NO	SYMBLE
1	VLED -	21	B0
2	VLED +	22	B1
3	GND	23	B2
4	VDD	24	B3
5	R0	25	B4
6	R1	26	B5
7	R2	27	B6
8	R3	28	B7
9	R4	29	DGND
10	R5	30	DCLK
11	R6	31	DISP
12	R7	32	HSYNC
13	G0	33	VSYNC
14	G1	34	DE
15	G2	35	NC
16	G3	36	GND
17	G4	37	XR
18	G5	38	YB
19	G6	39	XL
20	G7	40	YT



HPNTRONIX