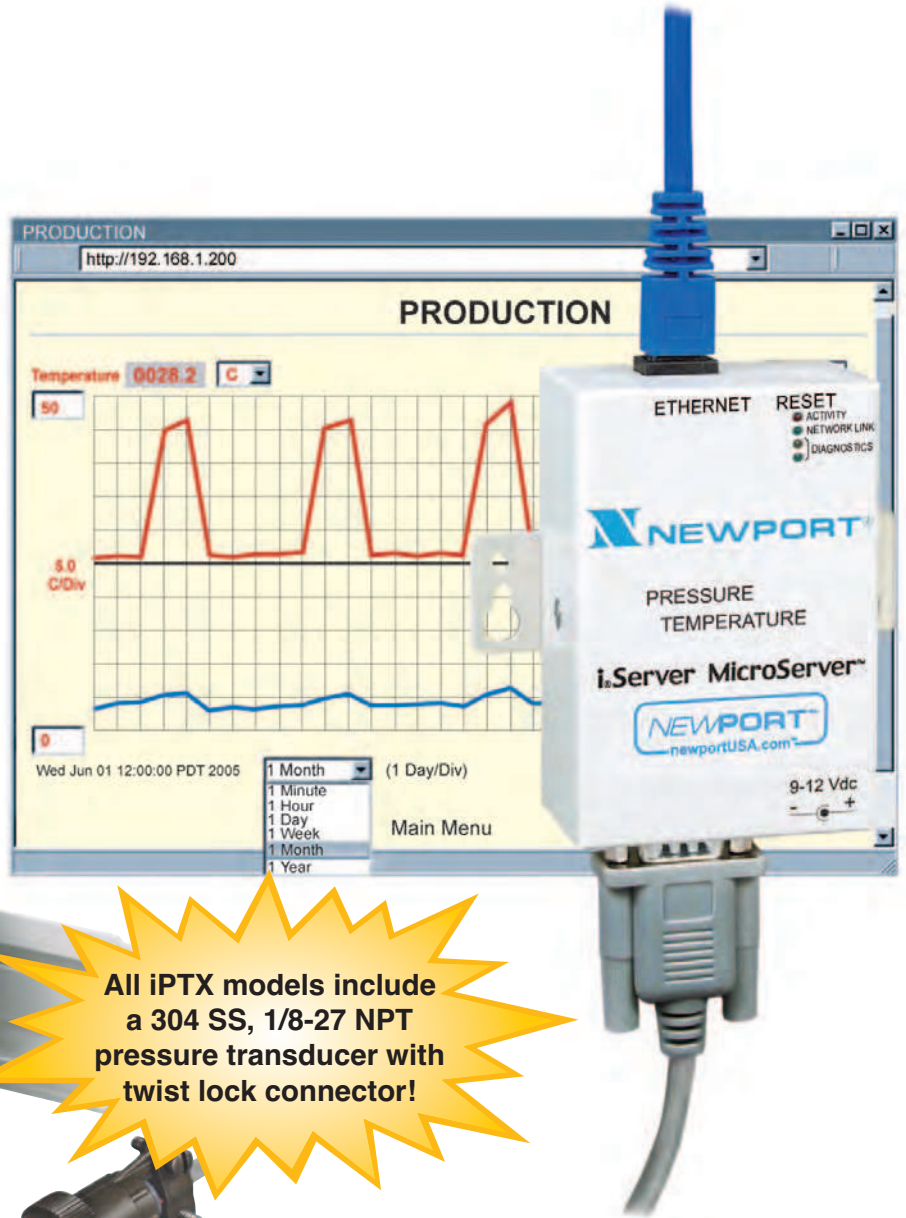




- ✓ Virtual Chart Recorder
- ✓ Web Server
- ✓ Accurate
- ✓ Email Alarms
- ✓ Data Logging
- ✓ No Special Software Required



All IPTX models include a 304 SS, 1/8-27 NPT pressure transducer with twist lock connector!

View Air (inert gas) Pressure + Temperature with a Web Browser

The **NEWPORT®** IPTX transmitter let's you monitor and record Air (inert gas) Pressure (0-200 psi) and Temperature over an Ethernet network or the Internet with no special software except a Web Browser.

The NEWPORT IPTX serves Active Web Pages to display real time readings, display charts of air pressure and temperature, or log data in standard data formats for use in a spreadsheet or data acquisition program such as Excel or Visual Basic.

The virtual chart viewed on the web page is a **JAVA™** Applet that records a chart over the LAN or Internet in real time. With the NEWPORT IPTX, there is no need to invest time and money learning a proprietary software program to log or chart the data.

iDRN-PS-1000

- ✓ 24Vdc Supply
- ✓ Switching Power Supply powers up to 7 units



Mounts to 35mm DIN rails

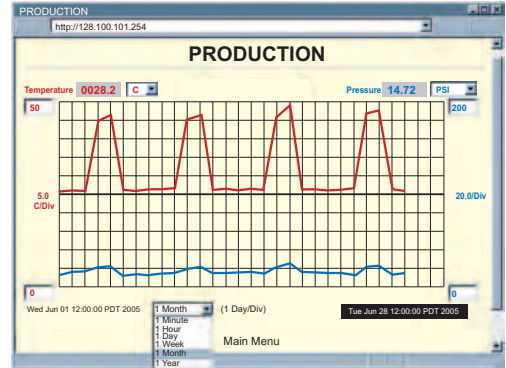


Adjustable Charts

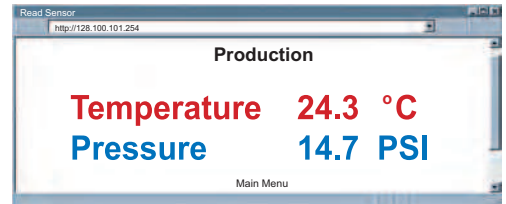
Chart scales are fully adjustable on the fly. For example, the chart can display one minute, one hour, one day, one week, one month or one year.

Temperature can be charted across the full span (0 to 70°C) or within any narrow range (such as 20 to 30°C).

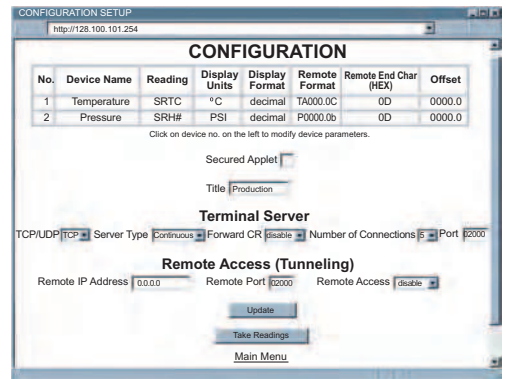
Air (inert gas) Pressure can be displayed in kilopascals (kPa), pounds per square inch (psi) or kilograms per square centimeter (Kg/cm²).



Adjustable Chart Web Page



Reading Sensor Web Page



iPTX-W and iPTX-D Device Configuration Web Page

Time	Temp.	Press.	RH	Dew	Error
5 15:2006 5:11:54 PM	75.56	101.600	0.00	32.00	0.00
6 15:2006 5:12:04 PM	75.56	101.600	0.00	32.00	0.00
7 15:2006 5:12:15 PM	75.56	101.600	0.00	32.00	0.00
8 15:2006 5:12:26 PM	75.56	101.600	0.00	32.00	0.00
9 15:2006 5:12:36 PM	75.56	101.600	0.00	32.00	0.00
10 15:2006 5:12:47 PM	75.56	101.600	0.00	32.00	0.00
11 15:2006 5:12:57 PM	75.56	101.600	0.00	32.00	0.00
12 15:2006 5:13:08 PM	75.56	101.600	0.00	32.00	0.00
13 15:2006 5:13:19 PM	75.56	101.600	0.00	32.00	0.00
14 15:2006 5:13:29 PM	75.56	101.700	0.00	32.00	0.00
15 15:2006 5:13:40 PM	75.56	101.600	0.00	32.00	0.00
16 15:2006 5:13:50 PM	75.56	101.600	0.00	32.00	0.00
17 15:2006 5:14:01 PM	75.56	101.600	0.00	32.00	0.00
18 15:2006 5:14:11 PM	75.56	101.700	0.00	32.00	0.00
19 15:2006 5:14:22 PM	75.56	101.600	0.00	32.00	0.00
20 15:2006 5:14:32 PM	75.56	101.600	0.00	32.00	0.00
21 15:2006 5:14:43 PM	75.56	101.700	0.00	32.00	0.00
22 15:2006 5:14:54 PM	75.56	101.700	0.00	32.00	0.00
23 15:2006 5:15:04 PM	75.56	101.600	0.00	32.00	0.00
24 15:2006 5:15:15 PM	75.56	101.600	0.00	32.00	0.00
25 15:2006 5:15:26 PM	75.56	101.600	0.00	32.00	0.00

Datalogging Spreadsheet

ETHERNET



View Air Pressure and Temperature over the Ethernet or Internet

Display and Chart Measurements

The iPTX transmitters come complete with a air pressure / temperature probe for measurement of a single location.

Award-winning Technology

The NEWPORT iPTX is simple to install and use, and features NEWPORT's award-winning iServer technology that requires no special software except a Web Browser.

The iPTX connects to an Ethernet Network with a standard RJ45 connector and sends data in standard TCP/IP packets. It is easily configured with a simple menu using a Web Browser and can be password protected.

From within an Ethernet LAN or over the Internet, the user simply types its IP address or an easy to remember name such as "Cleanroom 5" or "Midwest Server Room" in any Web Browser, and the iPTX serves a Web Page with the current readings.

Typical Applications

The NEWPORT iPTX is great for monitoring air (inert gas) pressure and temperature in applications such as: HVAC systems, pharmaceutical and food processing and storage, hospitals, laboratories, semiconductor fabs, electronic assembly, warehousing, manufacturing, greenhouses, farm animal shelters, and many more.

SENSOR SPECIFICATIONS

AIR (INERT GAS) PRESSURE (P)

Accuracy/Range:

0-200 psi ± 2.4 (0-14 bar ± 0.2)

Resolution: 0.006 psi (0.4 mbar)

Maximum safe pressure:
250 psi absolute (17 bar abs)

TEMPERATURE (T)

Accuracy: $\pm 2^{\circ}\text{C}$ ($\pm 3.6^{\circ}\text{F}$)

Range: 0 to 70°C (32 to 158°F)

Response Time: 5 seconds

Resolution: 0.01°C, 14bit

PROBE PHYSICAL DIMENSIONS

Probe: 99.0 mm lg x 19.0mm dia
(3.9" x 0.75" dia) assembled

Pressure Port: 304 SST, 1/8-27 NPT

Twist Lock Type Connector:
PTIH-10-6P and PT06F-10-6S

Cable with DB9 or Stripped Leads:
3m long (10')

Cable operating temperature:
0 to 105°C (32 to 221°F)

iSERVER SPECIFICATIONS

INTERFACES

Ethernet: 10Base-T (RJ45)

SUPPORTED PROTOCOLS

TCP/IP, UDP/IP, ARP, ICMP, DHCP,
DNS, HTTP, and Telnet

INDICATORS (LED's)

Network Activity, Network Link,
Transmit and Receive/Diagnostics

MANAGEMENT

Device configuration and monitoring
through embedded WEB server.

SOFTWARE

Firmware upgradeable. Including an
Excel program for automatic data
logging within definable time intervals,
compatible with all Windows operating
systems.

EMBEDDED WEB SERVER

Serves WEB pages containing
real-time data and live updated
charts within definable time intervals.

POWER

Input:

9-12 Vdc **iPTX-W**

10-32 Vdc **iPTX-D**

Safety Qualified ac power adapter:
Nominal Output: 9 Vdc @ 0.5A;
Input: 100 - 240Vac, 50/60 Hz included
for **iPTX-W**

Switching Power Supply sold separately
for **iPTX-D**

Consumption: 2.5 W max.

ENVIRONMENTAL

Operating Temperature:

0 to 70°C (32 to 158°F)

PACKAGING

Material: Metal case with flange mount
for **iPTX-W**. Polycarbonate case with
DIN Rail mount for **iPTX-D**

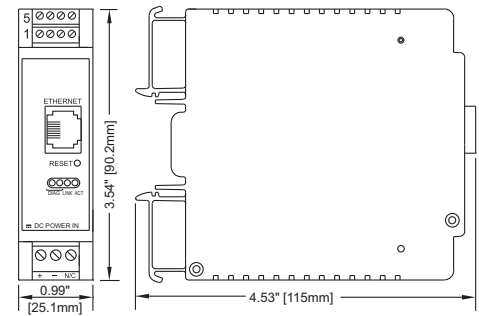
Weight: 272 g (0.60 lbs) **iPTX-D**

363 g (0.80 lbs) **iPTX-W**;

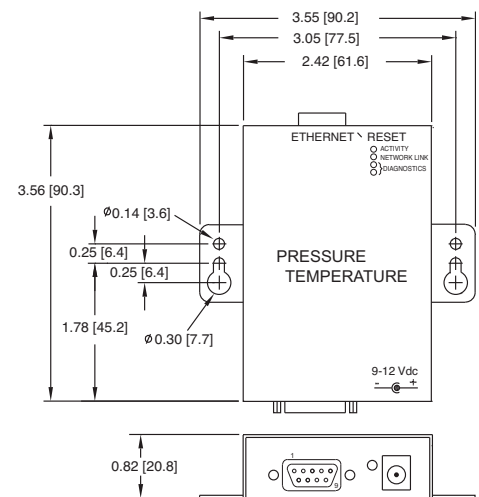
Dimensions: Refer to Mechanical
Specifications page.

MECHANICAL SPECIFICATIONS

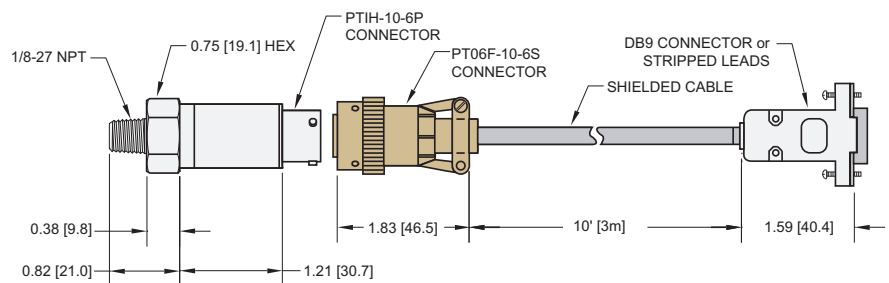
Dimensions shown in inches (mm)



iPTX-D



iPTX-W



iPTP / iPTP-DB9

Model No.	Description
iPTX-D	DIN rail iServer industrial MicroServer™ for air (inert gas) pressure (0-200 psi) and temperature. Includes probe with 3m (10') cable, stripped wire leads
iPTX-W	iServer MicroServer™ for air (inert gas) pressure (0-200 psi) and temperature. Includes probe with 3m (10') cable, DB9 connector and universal (100-240 Vac) power adapter
Accessories	
iPTP	Replacement probe with 3m (10') cable, stripped wire leads (for iPTX-D)
iPTP-DB9	Replacement probe with 3m (10') cable, DB9 connector (for iPTX-W)
iDRN-PS-1000	Power supply (switching), 95 to 240 Vac input, 24 Vdc output @ 850 mA, powers up to 7 units (for iPTX-D)
CAL-3-A	NIST traceable calibration certificate. 3 pressure points, temperature 25°C (for new units)