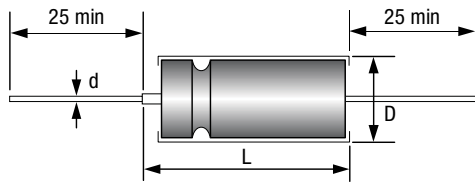


HERMETICALLY SEALED TANTALUM CASES AXIAL LEADS – POLARIZED TYPES



DIMENSIONS WITH INSULATING SLEEVE (in mm)

Case code	L Max.	D Max.	d ^{+10%} _{-0.05}
A	18	5.6	0.6
B	23	7.4	0.6
C	26	10.1	0.6
D	34	10.1	0.6



MARKING, PACKAGING, CONSTRUCTION: see general characteristics

ELECTRICAL AND ENVIRONMENTAL CHARACTERISTICS

	DCT79	DCT79E
Operating temperature	-55°C +125°C	-55°C +125°C
Humidity	56 days	56 days
Capacitance range	1.7 µF - 1200 µF	5.6 µF - 2200 µF
Tolerance	20%...10%	20%...10%
Voltage range	6 V...125 V	6 V...150 V
MAXIMUM CAPACITANCE CHANGE		
-55°C	see table	see table
+85°C	see table	see table
+125°C	see table	see table
MAXIMUM DF		
+20°C	see table	see table
+85°C	= lim 20°C	= lim 20°C
+125°C	= lim 20°C	= lim 20°C
MAXIMUM IMPEDANCE		
-55°C (100Hz)	see table	see table
MAXIMUM LEAKAGE CURRENT		
+20°C	see table	see table
+85°C	see table	see table
+125°C	= lim +85°C	= lim +85°C
MAXIMUM RIPPLE CURRENT		
+85°C (40kHz)	see table	see table
MAXIMUM REVERSE VOLTAGE		
+20°C	3 V	3 V
+85°C	3 V	3 V
+125°C	3 V	3 V
MAXIMUM SURGE VOLTAGE		
+85°C	1.15 x U _R	1.15 x U _R
+125°C	1.15 x U _C	1.15 x U _C

STANDARD RATINGS – ELECTRICAL CHARACTERISTICS

DCT79 / DCT79 SMD									
Capacitance 100Hz +20°C (µF)	Case Code	Maximum Capacitance Change			Max. DF +20°C (%)	Max. Imped. 100Hz -55°C (Ω)	Maximum Leakage Current		Max. I rms 40kHz +85°C (mA)
		-55°C (%)	+85°C (%)	+125°C (%)			+20°C (µA)	+85°C (µA)	
RATED VOLTAGE (+85°C) 6 V - 6.3 V - CATEGORY VOLTAGE (+125°C) 4 V									
30	A	-40	+10	+12	9	100	1	2	820
68	A	-40	+14	+16	15	60	1	2	960
140	B	-40	+14	+16	21	40	1	3	1200
220	B	-44	+16	+18	36	30	1	6.5	1370
270	B	-44	+17	+20	41	25	1	6.5	1375
330	C	-44	+14	+16	36	20	2	7.9	1800
560	C	-64	+17.5	+20	50	25	2	13	1900
1000	D	-80	+25	+25	68	22	3	14	2388
1200	D	-80	+25	+25	86	20	3	14	2388
RATED VOLTAGE (+85°C) 8 V - CATEGORY VOLTAGE (+125°C) 5 V									
25	A	-40	+10.5	+12	7.5	100	1	2	820
56	A	-40	+14	+16	14	59	1	2	900
120	B	-44	+17.5	+20	20	50	1	2	1230
220	B	-44	+16	+18	37	30	1	7	1370
290	C	-64	+17.5	+20	34	25	2	6	1770
430	C	-64	+17.5	+20	46	25	2	14	1825
850	D	-80	+25	+25	60	22	3	16	2456
RATED VOLTAGE (+85°C) 10 V - CATEGORY VOLTAGE (+125°C) 6.3 V									
20	A	-32	+10.5	+12	6	175	1	2	820
47	A	-36	+14	+16	13	100	1	2	855
100	B	-36	+14	+16	15	60	1	4	1200
150	B	-32	+14	+16	28	45	1	7	1271
180	B	-35	+14	+16	29	40	1	7	1365
250	C	-40	+14	+16	30	30	2	10	1720
390	C	-64	+17.5	+20	44	25	2	15	1800
680	D	-80	+25	+25	42	20	3	16	2487
750	D	-80	+25	+25	50	23	3	16	2487
820	D	-80	+25	+25	53	22	3	16	2360
RATED VOLTAGE (+85°C) 15 V - 16 V - CATEGORY VOLTAGE (+125°C) 10 V									
15	A	-24	+10.5	+12	5	155	1	2	780
33	A	-28	+14	+16	10	90	1	2	820
70	B	-28	+14	+16	13	75	1	4	1150
120	B	-28	+14	+16	18	50	1	7	1450
170	C	-32	+14	+16	25	35	2	10	1480
220	C	-41	+13	+15	21	40	2	6	1490
270	C	-56	+17.5	+20	32	30	2	14	1740
330	C	-58	+18	+20	40	30	2	14	1760
470	D	-75	+25	+25	33	24	3	18	2100
540	D	-80	+25	+25	40	23	3	18	2300
560	D	-80	+25	+25	36	23	3	18	2300
RATED VOLTAGE (+85°C) 25 V - CATEGORY VOLTAGE (+125°C) 16 V									
10	A	-16	+8	+9	4	220	1	2	715
22	A	-20	+10	+12	6.6	140	1	2	825
50	B	-28	+13	+15	11	70	1	2	1130
100	B	-28	+13	+15	15	50	1	9	1435
120	C	-32	+13	+15	21	38	2	6	1450
180	C	-48	+13	+15	26	32	2	13	1700
330	D	-60	+25	+25	28	27	3	20	2000
350	D	-64	+25	+25	35	24	3	20	2246
390	D	-68	+25	+25	32	24	3	20	2025
560	D	-65	+25	+30	46	15	9	36	2040
RATED VOLTAGE (+85°C) 30 V - CATEGORY VOLTAGE (+125°C) 20 V									
8	A	-16	+8	+12	4	275	1	2	640
15	A	-20	+10	+12	5	175	1	2	780
40	B	-24	+10.5	+12	10	65	1	5	1120
68	B	-24	+13	+15	13	60	1	8	1285
100	C	-28	+10.5	+12	17	40	2	12	1477
150	C	-48	+13	+15	23	35	2	12	1525
300	D	-60	+25	+25	30	25	3	20	2100
RATED VOLTAGE (+85°C) 40 V - CATEGORY VOLTAGE (+125°C) 25 V									
12	A	-24	+8	+10	6	234	1	2	450
56	B	-28	+13	+15	14	78	1	9	1100
100	C	-40	+13	+15	18	48	2	17	1450
220	D	-55	+23	+23	22	27	3	22	1900

HERMETICALLY SEALED TANTALUM CASES

AXIAL LEADS – POLARIZED TYPES

STANDARD RATINGS – ELECTRICAL CHARACTERISTICS

DCT79 / DCT79 SMD									
Capacitance 100Hz +20°C (µF)	Case Code	Maximum Capacitance Change			Max. DF +20°C (%)	Max. Imped. 100Hz -55°C (Ω)	Maximum Leakage Current		Max. I rms 40kHz +85°C (mA)
		-55°C (%)	+85°C (%)	+125°C (%)			+20°C (µA)	+85°C (µA)	
RATED VOLTAGE (+85°C) 50 V - CATEGORY VOLTAGE (+125°C) 30 V									
5	A	-16	+5	+6	3	400	1	2	580
10	A	-20	+8	+9	4	250	1	2	715
25	B	-20	+10.5	+12	8	95	1	5	1065
47	B	-24	+13	+15	11	70	1	9	1215
60	C	-16	+10.5	+12	12	45	2	12	1335
82	C	-32	+13	+15	15	45	2	10	1460
160	D	-50	+23	+23	17	27	3	22	2040
RATED VOLTAGE (+85°C) 60 V - 63 V - CATEGORY VOLTAGE (+125°C) 40 V									
4	A	-16	+5	+6	2.8	550	1	2	525
8.2	A	-20	+8	+9	4	275	1	2	625
20	B	-16	+10.5	+12	+7	105	1	5	1026
39	B	-24	+10	+12	10	90	1	9	1185
50	C	-16	+10.5	+12	10	50	2	12	1341
68	C	-30	+10.5	+12	13	50	2	10	1393
140	D	-40	+20	+20	16	28	3	22	1990
150	D	-40	+20	+20	17	27	3	22	1865
RATED VOLTAGE (+85°C) 75 V - 80 V - CATEGORY VOLTAGE (+125°C) 50 V									
3.5	A	-16	+5	+6	2.5	650	1	2	525
6.8	A	-20	+8	+9	3	300	1	2	610
15	B	-16	+8	+9	6	150	1	5	1000
33	B	-24	+10	+12	10	90	1	9	1079
40	C	-16	+10.5	+12	9	60	2	12	1293
56	C	-28	+10.5	+15	11	60	2	10	1396
68	C	-30	+14	+15	13	50	2	10	1522
100	D	-35	+20	+20	12	36	9	36	1500
110	D	-35	+20	+20	11	29	3	24	1990
120	D	-36	+20	+20	12	28	3	24	1914
150	D	-48	+21	+22	17	30	9	36	1914
RATED VOLTAGE (+85°C) 100 V - CATEGORY VOLTAGE (+125°C) 65 V									
2.5	A	-16	+7	+8	2	950	1	2	505
4.7	A	-16	+7	+8	3	500	1	2	565
11	B	-16	+8	+8	5	200	1	4	835
22	B	-16	+7	+8	7.5	100	1	9	1065
30	C	-16	+8	+8	7	80	2	12	1240
33	C	-16	+8	+8	7	93	2	10	1200
39	C	-16	+8	+8	8	90	2	10	1282
43	C	-20	+8	+8	8	70	2	10	1389
47	C	-20	+7	+8	8	70	2	10	1389
68	D	-24	+15	+15	8	42	3	26	1859
82	D	-24	+15	+15	10	39	3	24	1859
86	D	-24	+15	+15	10	30	3	24	1859
RATED VOLTAGE (+85°C) 125 V - CATEGORY VOLTAGE (+125°C) 85 V									
1.7	A	-16	+7	+8	2	1250	1	2	415
2.2	A	-16	+7	+8	2	1250	1	2	452
2.7	A	-16	+7	+8	3	780	1	2	452
3.3	A	-16	+7	+8	3	600	1	2	495
3.6	A	-16	+7	+8	2.7	600	1	2	520
3.9	A	-16	+7	+8	3.5	557	1	2	495
9	B	-16	+7	+8	5	240	1	5	755
14	B	-16	+7	+8	6	167	1	7	1050
15	B	-16	+7	+8	6	167	1	7	1050
18	C	-16	+7	+8	5	129	2	9	1130
25	C	-16	+7	+8	6	93	2	10	1335
27	C	-16	+7	+8	6	106	2	13	1282
56	D	-25	+15	+15	6	32	3	28	1859

STANDARD RATINGS – ELECTRICAL CHARACTERISTICS (EXTENDED RANGE)

DCT79E / DCT79E SMD									
Capacitance 100Hz +20°C (µF)	Case Code	Maximum Capacitance Change			Max. DF +20°C (%)	Max. Imped. 100Hz -55°C (Ω)	Maximum Leakage Current		Max. I rms 40kHz +85°C (mA)
		-55°C (%)	+85°C (%)	+125°C (%)			+20°C (µA)	+85°C (µA)	
RATED VOLTAGE (+85°C) 6 V - 6.3 V - CATEGORY VOLTAGE (+125°C) 4 V									
120	A	-41	+15	+16	21	81	1.5	3	820
150	A	-42	+16	+16	34	80	2	9	820
160	A	-42	+16	+16	41	80	2	9	820
220	A	-64	+13	+16	50	36	2	9	1000
470	B	-60	+20	+20	90	46	2	10	1281
560	B	-68	+20	+20	106	48	2	10	1255
820	B	-88	+16	+20	155	18	3	14	1500
1500	C	-90	+20	+25	172	18	5	20	1900
2200	D	-90	+25	+25	170	13	6	24	2300
RATED VOLTAGE (+85°C) 8 V - CATEGORY VOLTAGE (+125°C) 5 V									
120	A	-44	+17.5	+20	32	80	2	6	820
180	A	-60	+13	+16	41	45	2	9	1000
430	B	-64	+17.5	+20	64	54	2	10	1230
680	B	-83	+16	+20	130	22	3	14	1500
1500	C	-90	+20	+25	170	18	5	20	1900
1800	D	-90	+25	+30	138	14	7	25	2300
RATED VOLTAGE (+85°C) 10 V - CATEGORY VOLTAGE (+125°C) 6.3 V									
68	A	-40	+15	+16	21	85	1.5	3	820
82	A	-40	+16	+16	25	84	2	6	820
100	A	-40	+16	+16	30	82	2	6	820
150	A	-55	+13	+13	34	54	2	9	900
300	B	-54	+16	+18	60	52	2	10	1195
330	B	-54	+17	+18	65	52	2	10	1195
350	B	-60	+18	+18	68	52	2	10	1195
390	B	-60	+19	+20	74	54	2	10	1195
470	C	-65	+18	+20	44	25	2	15	1800
560	B	-77	+16	+20	106	27	3	16	1450
850	C	-84	+25	+25	111	36	4	16	1720
1000	C	-80	+25	+25	92	36	4	16	1720
1200	C	-80	+20	+25	137	18	5	20	1850
1500	D	-88	+25	+30	114	15	7	25	2360
1800	D	-88	+30	+30	138	24	7	25	2360
2200	D	-88	+30	+30	170	22	8	26	2360
RATED VOLTAGE (+85°C) 15 V - 16 V - CATEGORY VOLTAGE (+125°C) 10 V									
47	A	-28	+16	+16	20	100	1.5	3	760
56	A	-28	+16	+16	22	100	1.5	3	760
82	A	-35	+12	+16	20	43	2	6	915
100	A	-44	+13	+16	30	72	2	9	900
220	B	-35	+16	+16	42	62	2	10	1215
270	B	-45	+18	+18	55	60	2	12	1215
290	B	-54	+18	+18	60	65	2	12	1215
330	C	-58	+18	+20	40	30	2	14	1760
390	B	-66	+16	+20	74	31	3	16	1450
680	C	-80	+25	+25	80	42	5	20	1582
750	C	-80	+25	+25	95	42	6	24	1582
820	C	-77	+20	+25	95	22	6	24	1800
850	D	-80	+25	+25	95	24	8	32	2300
1000	D	-77	+25	+25	92	17	8	32	2300
1200	D	-84	+25	+30	103	25	8	32	2300
RATED VOLTAGE (+85°C) 25 V - CATEGORY VOLTAGE (+125°C) 16 V									
27	A	-20	+12	+12	11	140	1.5	3	715
33	A	-24	+14	+14	13	130	1.5	3	715
39	A	-28	+16	+16	16	120	2	9	715
43	A	-28	+16	+16	18	120	2	9	715
68	A	-40	+12	+15	22	90	2	9	850
150	B	-35	+15	+15	32	62	2	10	1130
160	B	-35	+15	+15	34	60	2	10	1130
180	B	-48	+14	+15	34	60	2	10	1130
220	C	-52	+18	+20	33	33	2	13	1614
270	B	-62	+13	+16	55	33	2	16	1400
390	C	-70	+25	+25	48	48	7	28	1396
470	C	-76	+25	+25	48	48	7	28	1398
540	C	-80	+25	+25	60	48	7	28	1398
560	C	-72	+20	+25	60	24	7	28	1750
680	D	-72	+25	+25	60	19	8	32	2100
820	D	-80	+25	+25	82	26	8	32	1862
850	D	-80	+25	+25	95	26	8	32	1970

HERMETICALLY SEALED TANTALUM CASES

AXIAL LEADS – POLARIZED TYPES

STANDARD RATINGS – ELECTRICAL CHARACTERISTICS (EXTENDED RANGE)

DCT79E / DCT79E SMD									
Capacitance 100Hz +20°C (µF)	Case Code	Maximum Capacitance Change			Max. DF +20°C (%)	Max. Imped. 100Hz -55°C (Ω)	Maximum Leakage Current		Max. I rms 40kHz +85°C (mA)
		-55°C (%)	+85°C (%)	+125°C (%)			+20°C (µA)	+85°C (µA)	
RATED VOLTAGE (+85°C) 30 V - CATEGORY VOLTAGE (+125°C) 20 V									
25	A	-24	+12	+12	11	160	1.5	3	640
33	A	-30	+12	+14	12	160	2	9	640
47	A	-23	+12	+15	20	57	2	6	830
56	A	-38	+12	+15	22	100	2	9	800
120	B	-32	+15	+15	30	60	2	10	1185
150	B	-35	+15	+15	32	60	2	10	1185
170	B	-48	+15	+15	34	65	2	12	1185
220	B	-60	+13	+16	42	36	3	16	1200
300	C	-60	+15	+15	43	44	6	24	1559
330	C	-65	+25	+25	45	52	6	24	1373
350	C	-70	+25	+25	48	52	8	32	1477
390	C	-75	+25	+25	55	52	8	32	1477
430	C	-80	+25	+25	60	54	8	32	1477
470	C	-65	+20	+25	64	25	8	32	1500
560	D	-65	+25	+30	40	20	9	36	2000
RATED VOLTAGE (+85°C) 40 V - CATEGORY VOLTAGE (+125°C) 25 V									
15	A	-20	+10	+12	7	140	1	2	660
18	A	-20	+12	+12	10	200	1.5	4	580
22	A	-24	+12	+12	11	190	1.5	4	580
33	A	-20	+10	+12	12	88	3	8	795
68	B	-24	+13	+15	15	60	1	8	1285
100	B	-40	+15	+15	25	60	2	10	1285
120	B	-32	+15	+15	30	62	2	12	1241
150	C	-48	+14	+15	23	35	2	12	1525
270	C	-60	+25	+25	37	52	7	28	1373
330	C	-65	+25	+25	43	52	8	32	1373
390	D	-75	+25	+25	43	30	8	32	1900
470	D	-80	+25	+25	45	30	9	36	1900
RATED VOLTAGE (+85°C) 50 V - CATEGORY VOLTAGE (+125°C) 30 V									
18	A	-24	+12	+12	10	200	1.5	3	580
22	A	-24	+12	+12	11	190	2	9	580
33	A	-29	+10	+12	12	135	2	9	700
100	B	-40	+15	+15	25	67	3	15	1150
120	B	-42	+12	+15	22.5	49	4	24	1200
270	C	-46	+20	+25	37	29	8	32	1450
330	D	-46	+25	+30	38	22	9	36	1900
350	D	-70	+25	+25	40	30	9	36	1900
390	D	-75	+25	+25	43	30	9	36	1900
430	D	-80	+25	+25	45	31	10	40	1900
RATED VOLTAGE (+85°C) 60 V - 63 V - CATEGORY VOLTAGE (+125°C) 40 V									
10	A	-20	+8	+9	4	250	1	2	572
12	A	-20	+8	+9	7	233	2	4	572
15	A	-22	+9	+9	8	220	2	9	562
27	A	-24	+10	+12	10	144	3	12	700
47	B	-24	+13	+15	13	70	1	9	1150
56	B	-26	+14	+15	18	72	2	12	1150
82	B	-36	+15	+15	22	70	2	12	1150
100	B	-36	+12	+15	19	54	4	20	1100
100	C	-37	+14	+15	18	42	2	11	1420
120	C	-40	+18	+18	20	49	3	18	1420
220	C	-40	+16	+20	30	29	8	32	1400
270	D	-45	+20	+25	26	23	9	36	1850
330	D	-72	+25	+25	32	31	10	40	1850

STANDARD RATINGS – ELECTRICAL CHARACTERISTICS (EXTENDED RANGE)

DCT79E / DCT79E SMD									
Capacitance 100Hz +20°C (μF)	Case Code	Maximum Capacitance Change			Max. DF +20°C (%)	Max. Imped. 100Hz -55°C (Ω)	Maximum Leakage Current		Max. I rms 40kHz +85°C (mA)
		-55°C (%)	+85°C (%)	+125°C (%)			+20°C (μA)	+85°C (μA)	
RATED VOLTAGE (+85°C) 75 V - 80 V - CATEGORY VOLTAGE (+125°C) 50 V									
8.2	A	-22	+9	+9	6	280	1.5	3	610
9	A	-22	+9	+9	6	280	2	4	572
22	A	-19	+10	+12	8.5	157	3	12	600
43	B	-24	+10.5	+12	15	89	2	10	1051
47	B	-30	+14	+14	15	87	2	10	1051
56	B	-28	+10.5	+15	11	72	2	12	1051
68	B	-36	+15	+15	21	86	2	12	1051
82	B	-30	+12	+15	15	63	4	24	1000
82	C	-32	+14	+15	15	45	2	10	1335
100	C	-36	+17	+18	19	60	8	32	1335
150	C	-40	+20	+20	25	60	9	36	1335
180	C	-35	+16	+20	28	30	9	36	1335
220	D	-40	+20	+22	24.4	24	10	40	1850
250	D	-68	+25	+25	40	33	10	40	1850
270	D	-68	+25	+25	42	35	11	44	1850
RATED VOLTAGE (+85°C) 100 V - CATEGORY VOLTAGE (+125°C) 65 V									
5.6	A	-17	+8	+8	6	475	2	5	530
10	A	-17	+10	+12	4.5	200	3	12	800
30	B	-16	+8	+8	10	99	3	15	1065
33	B	-16	+8	+8	14	95	3	15	1065
39	B	-20	+12	+12	10	80	2	12	1300
56	C	-28	+14	+15	11	60	2	10	1335
68	C	-30	+14	+15	11.3	40	10	40	1600
100	D	-35	+20	+20	11	36	3	24	1859
120	D	-35	+15	+17	25	30	12	48	2000
RATED VOLTAGE (+85°C) 125 V - CATEGORY VOLTAGE (+125°C) 85 V									
6.8	A	-14	+10	+12	6	300	3	12	700
18	B	-16	+8	+8	8	133	2	10	1065
27	B	-18	+12	+15	7.2	90	5	24	1200
39	C	-16	+8	+8	8	90	2	10	1282
47	C	-23	+10	+10	7.9	50	2	10	1500
68	D	-24	+15	+15	8	42	3	26	1859
82	D	-24	+15	+17	10	32	3	24	1900
RATED VOLTAGE (+85°C) 150 V - CATEGORY VOLTAGE (+125°C) 100 V									
1.7	A	-16	+8	+8	3	780	1	3	495
2.5	A	-16	+8	+8	3	780	1	3	495
3.0	A	-16	+8	+8	3	600	1	3	495
3.3	A	-16	+8	+8	3	600	1	3	495
14	B	-16	+8	+8	10	167	2	10	1065
18	B	-16	+8	+8	10	133	2	10	1065
25	C	-16	+8	+8	20	93	2	20	1335
47	C	-24	+10	+10	20	70	2	20	1335
56	D	-24	+15	+15	30	47	3	30	1860
82	D	-24	+18	+18	30	39	3	30	1860

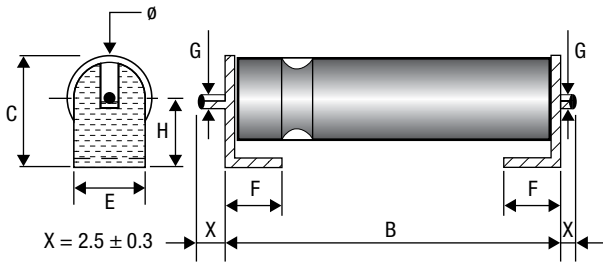
Note: Voltage 6 V, 8 V, 15 V, 30 V, 50 V, 60 V and 75 V concern the MIL standard range.

HERMETICALLY SEALED TANTALUM CASES FOR SURFACE MOUNT SMD – POLARIZED TYPES



DIMENSIONS WITH INSULATING SLEEVE (in mm)

Case code	A max.	B ±0.5	F ±0.5	H Max.	E ±0.4	C Max.	G Max.	Ø Max.
A	17.7	13.5	4.0	4.8	3.8	7.5	2.0	5.8
B	22.0	18.5	4.0	5.9	5.3	9.5	2.0	7.4
C	26.6	21.5	4.0	7.5	8.4	12.5	2.0	10.1
D	34.0	29.5	4.0	7.5	8.4	12.5	2.0	10.1



MARKING, PACKAGING, CONSTRUCTION: see general characteristics

ELECTRICAL AND ENVIRONMENTAL CHARACTERISTICS

	DCT79 SMD	DCT79E SMD
Operating temperature	-55°C +125°C	-55°C +125°C
Humidity	56 days	56 days
Capacitance range	1.7 µF - 1200 µF	5.6 µF - 2200 µF
Tolerance	20%...10%	20%...10%
Voltage range	6 V...125 V	6 V...150 V
MAXIMUM CAPACITANCE CHANGE		
-55°C	see table	see table
+85°C	see table	see table
+125°C	see table	see table
MAXIMUM DF		
+20°C	see table	see table
+85°C	= lim 20°C	= lim 20°C
+125°C	= lim 20°C	= lim 20°C
MAXIMUM IMPEDANCE		
-55°C (100Hz)	see table	see table
MAXIMUM LEAKAGE CURRENT		
+20°C	see table	see table
+85°C	see table	see table
+125°C	= lim +85°C	= lim +85°C
MAXIMUM RIPPLE CURRENT		
+85°C (40kHz)	see table	see table
MAXIMUM REVERSE VOLTAGE		
+20°C	3 V	3 V
+85°C	3 V	3 V
+125°C	3 V	3 V
MAXIMUM SURGE VOLTAGE		
+85°C	1.15 x U _R	1.15 x U _R
+125°C	1.15 x U _C	1.15 x U _C