

Through-hole LED

ø 3mm green



- high luminosity
- long lifetime up to 75'000 hours
- high quality for professional application
- application: TV set, Monitor, Computer, PC-Board
- RoHS compliant



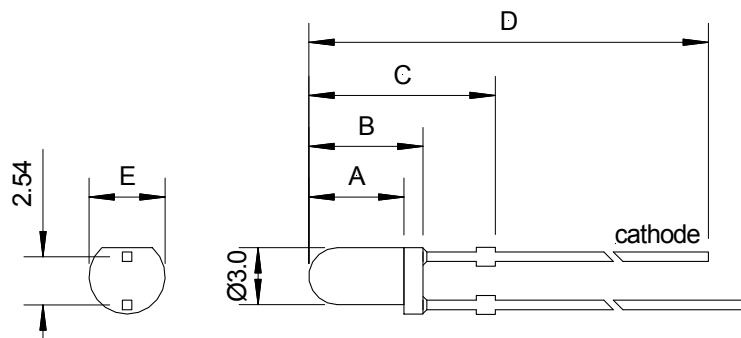
Part Number	Peak Wavelength	Intensity (mcd)			Angle (deg)	Voltage (V)		Lens Colour	Type
		min	typ	max		min	typ		
L3-G41N-GVW	525	24640	34800	49500	15°	3.2	3.6	waterclear	1
L3-G51N-GUV	525	7400	-	14000	30°	-	3.6	waterclear	2
L3-G310-1	555	10	20	40	20°	2.1	2.8	waterclear	3
L3-G301	568	30	40	50	40°	2.2	2.6	green diffused	4

Electro-Optical-Characteristics Ta=25°C, Forward Current: IF Typical = 20mA,
 1/10-1/20 Duty Cycle, 0.1ms-10ms Pulse Width: up to 100mA, depending on type number.
 Storage Temp. -40 ~+100 (°C) Operating Temp. -40 ~+85 (°C)

Detailed data sheets are available on request

Dimensions (mm)

Type	A	B	C	D	E
1	5.0	6.0	11.0	27.5	3.8
2	4.4	5.4	10.4	26.9	3.8
3	4.0	4.7	No stopper	32.0	3.8
4	4.5	5.3	No stopper	30.7	3.8



1. All specifications according to information from our manufacturers, without additional guarantee on our part
2. All dimensions are in millimetres
3. Tolerance is ±0.25mm unless otherwise specified
4. Specifications are subject to change without notice