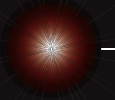


Flat lamp with power LED



# Flat lamp with power LED

*compact, robust and very efficient lamps for interiors*

These extremely flat, built-in lamps can be used throughout the entire living area, particularly as lights in boats, caravans, under kitchen cabinets, in furniture, display windows or wood panelling.

The appealing design of the lamp housing, in combination with perfect light direction, is not only aesthetically pleasing from an artistic point of view, it has also been executed to perfection in terms of light technology.

The textured acrylic glasses in version Wave (longitudinal prism) and version Diamond (square prism) produce a playful emission behaviour, which changes form depending on the perspective of the observer.

With an installation depth of only 25 millimetres, this super-flat lamp can be installed in an extremely space-saving way.

In order for it to be used in various applications, the lamp is available in four different sizes and is equipped with either a warm white (3500°K) or cold white (8000°K) power LED.

Another highlight is the weight. With a maximum weight of only 1.4 kilograms (Type D), the lamp is also perfect for installation in light or filigree constructions.

The colourless, anodized aluminium frame completes this modern product's elegant design.

Due to extremely low energy consumption, the power LED produces a considerably better energy balance than ordinary filament or halogen lamps.

The lamp is supplied already wired for connection with a 1.5-metre cable. Because it does not generate much heat, and also because of its long life, the module is ideally suited for installation in places that are difficult to reach.

The flat lamp is operated by the power supply that is provided with it.



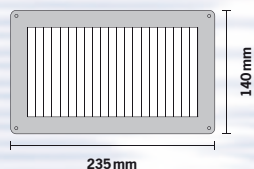
Type A (Version Diamond)



Type D (Version Wave)



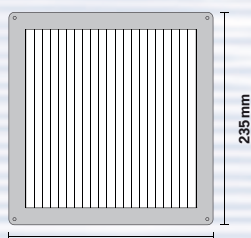
Type C (Version Diamond)



235 mm

140 mm

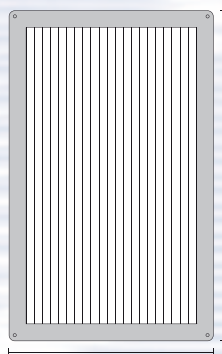
Type A



235 mm

235 mm

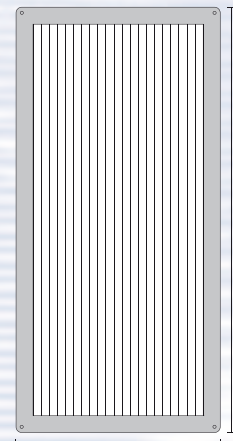
Type B



235 mm

382 mm

Type C



235 mm

498 mm

Type D

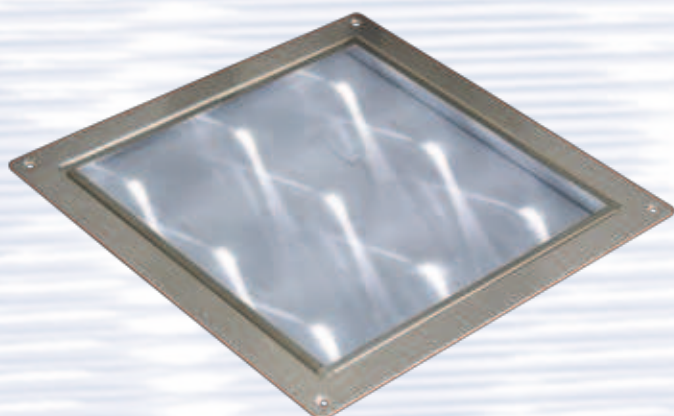
**Power Supply**

|                     |                 |
|---------------------|-----------------|
| Input Voltage       | 190V – 265V AC  |
| Output Current      | 1 x 350mA       |
| Output Current Vmax | 48V             |
| Weight              | 65 g            |
| L x W x H           | 122 x 33 x 20mm |

**Power Supply**

|                     |                 |
|---------------------|-----------------|
| Input Voltage       | 190V – 265V AC  |
| Output Current      | 3 x 350mA       |
| Output Current Vmax | 40V             |
| Weight              | 255 g           |
| L x W x H           | 147 x 75 x 29mm |

| Part Number | Type | Colour          | Version | Luminance / LED | Alimentation | Power Consumption | Weight |
|-------------|------|-----------------|---------|-----------------|--------------|-------------------|--------|
| 201 00 000  | A    | warm-white      | Wave    | 6 x 65lm        | 1 x 350mA    | 8W                | 0,5 kg |
| 201 00 100  |      | 2500°K – 3000°K | Diamond |                 |              |                   |        |
| 201 00 010  |      | cold-white      | Wave    | 6 x 80lm        |              |                   |        |
| 201 00 110  |      | 5000°K – 9000°K | Diamond |                 |              |                   |        |
| 201 10 000  | B    | warm-white      | Wave    | 9 x 65lm        | 1 x 350mA    | 12W               | 0,7 kg |
| 201 10 100  |      | 2500°K – 3000°K | Diamond |                 |              |                   |        |
| 201 10 010  |      | cold-white      | Wave    | 9 x 80lm        |              |                   |        |
| 201 10 110  |      | 5000°K – 9000°K | Diamond |                 |              |                   |        |
| 201 20 000  | C    | warm-white      | Wave    | 15 x 65lm       | 3 x 350mA    | 20W               | 1,1 kg |
| 201 20 100  |      | 2500°K – 3000°K | Diamond |                 |              |                   |        |
| 201 20 010  |      | cold-white      | Wave    | 15 x 80lm       |              |                   |        |
| 201 20 110  |      | 5000°K – 9000°K | Diamond |                 |              |                   |        |
| 201 30 000  | D    | warm-white      | Wave    | 18 x 65lm       | 3 x 350mA    | 24W               | 1,4 kg |
| 201 30 100  |      | 2500°K – 3000°K | Diamond |                 |              |                   |        |
| 201 30 010  |      | cold-white      | Wave    | 18 x 80lm       |              |                   |        |
| 201 30 110  |      | 5000°K – 9000°K | Diamond |                 |              |                   |        |



Type B (Version Wave)

**Warning:**

All lamps are driven by a constant current.  
 The provided power supply has to be connected in between the lamp and the mains voltage (190–265V AC).  
 Never connect the lamp direct to 230V AC!



Request our standard catalogues for LED and signal lights with fittings or visit us at [www.sloan.ch](http://www.sloan.ch).

#### SLOAN Catalogue 1

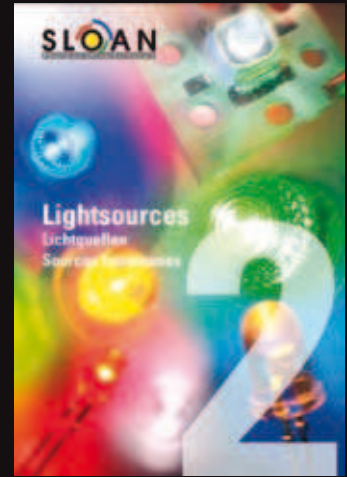
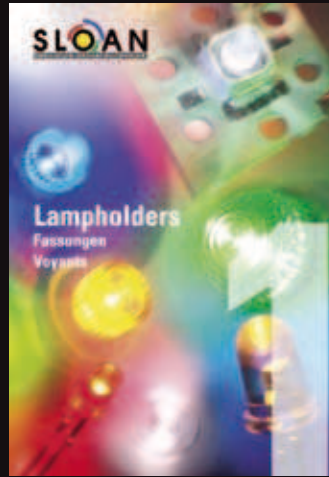
Standard lights such as flat lights, signal lights with reflectors and LED products with BA9S, E10 and other bases.

#### SLOAN Catalogue 2

Standard LED Product line ranging from 3 mm, 5 mm and advanced lifetime LEDs to SMD and power LEDs as well as LED products with BA9S, E10 and other bases.

#### SLOAN Custom Solutions

Individually designed LED light solutions for specific requirements. From initial concept and development through design and production; a full service from one source.



#### SLOAN AG

Birmannsgasse 8  
CH-4009 Basel  
Switzerland

Tel. +41 61 264 10 60

Fax. +41 61 264 10 75

[sloan@sloan-basel.com](mailto:sloan@sloan-basel.com)

[www.sloan.ch](http://www.sloan.ch)