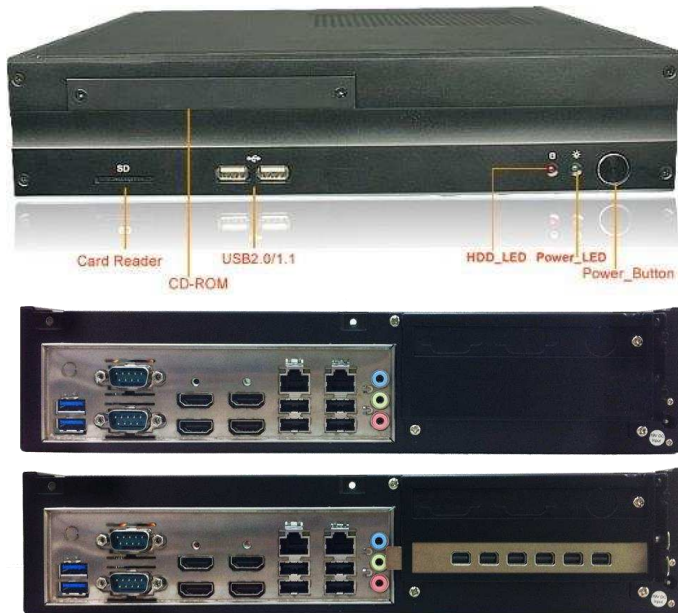


# JBC128F83 Series

**AMD eTrinity Barebone System**  
**Supports AMD R-Series APU (FS1r2)**  
**4 HDMI Ports / 2 GbE / PCIE x16 Slot**



## Industrial class embedded barebone system

- Available with your choice of installed embedded AMD APU and embedded AMD Radeon video card

Available Models	CPU	Video Card	Total Displays
HBJC128F83-B	FS1r2 Socket	PCIE x16 Slot	4
HBJC128F83-464-B	R-464L	PCIE x16 Slot	4
HBJC128F83-4647-B	R-464L	E6760 6-port	10
HBJC128F83-272-B	R-272F	PCIE x16 Slot	4
HBJC128F83-2724-B	R-272F	E6460 4-port	8

## Barebone Specifications

<b>Processor</b>	■ Supports AMD R-Series APU, Socket FS1r2, heatsink/Fan included
<b>Chipset</b>	■ AMD A75 Chipset
<b>Video</b>	■ Built-in AMD Radeon HD 7000G series graphics (Optional AMD Radeon E6760 or E6460)
<b>Memory</b>	■ 2 * 204-pin DDR3-1600 Dual Channel SO-DIMM up to 16GB total
<b>Expansion Slots</b>	■ 1 * PCI Express 2.0 x16 slot (supports full-height single slot cards), 1 * Mini-PCIE slot
<b>Storage</b>	■ 6 * SATA3 6Gb/s ports supporting RAID 0, 1, 10, JBOD
<b>Other Features</b>	■ Support ACPI S3, CPU Smart FAN, Watchdog Timer 10-255 min/sec, GPIO, TPM 1.2 header
<b>Rear Panel I/O</b>	■ 2 * USB 3.0 ports, 4 * USB 2.0 ports, 4 * HDMI ports, 2 * Serial (RS232) ports, 2 * RJ45 ports, 3 * audio jacks (line-out, line-in, mic), Antenna hole, 2 * DB9 punchouts, 19V DC In jack
<b>Front Panel I/O</b>	■ Power button, Power LED, HDD LED, 2 * USB 2.0 ports, All-in-one card reader, Slim optical bay (can install additional 2.5" drive if no optical is installed)
<b>BIOS</b>	■ AMI UEFI 16MB DIP Flash ROM
<b>Box Contents</b>	■ 120W 19V AC Adapter, US Power Cord, 2 * COM cables, Wall Mount Kit, Manual, Driver disk
<b>Compliance</b>	■ CE, FCC, RoHS, ErP Ready
<b>Temperature</b>	■ Operating Temperature 0~40 ° C, Storage Temperature -20-85 ° C
<b>Dimensions</b>	■ 273 x 300 x 65mm (DxWxH)
<b>Warranty</b>	■ 1 Years Limited Warranty

\*Specifications subject to change without notice, not responsible for typographical errors.



**Jetway Computer Corporation**  
 Phone: 510-857-0130 Fax: 510-857-0138  
 38507 Cherry St., Suite E, Newark, CA 94560  
[www.jetwaycomputer.com](http://www.jetwaycomputer.com)