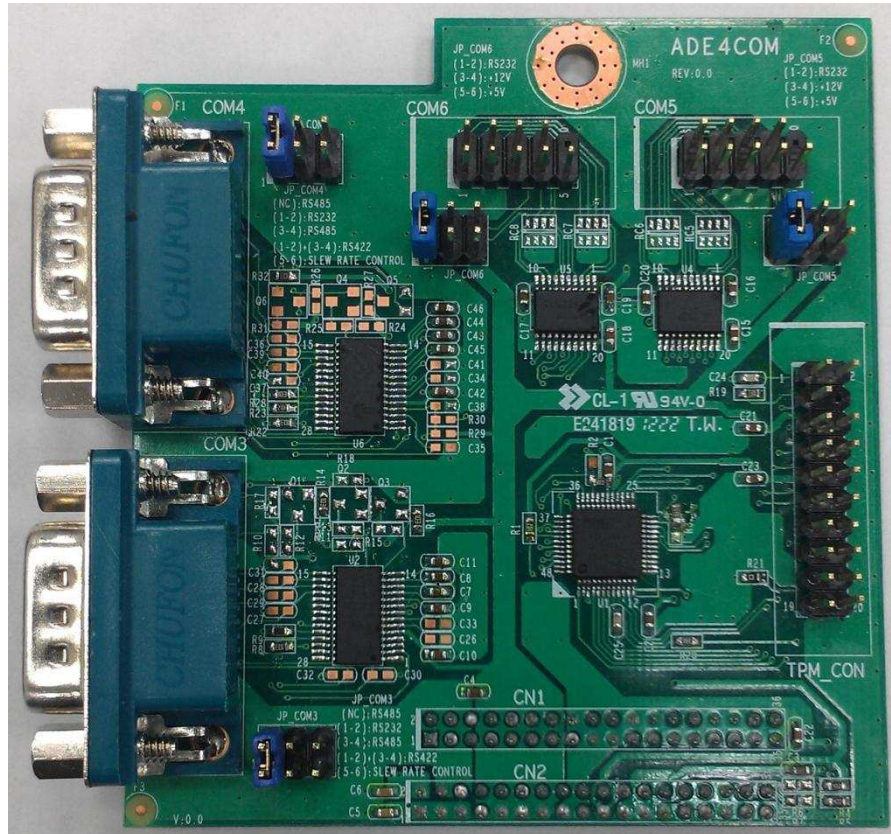


# ADE4COM

## Mini-ITX 4 serial ports Adapter



Dimension : 75 × 82 mm

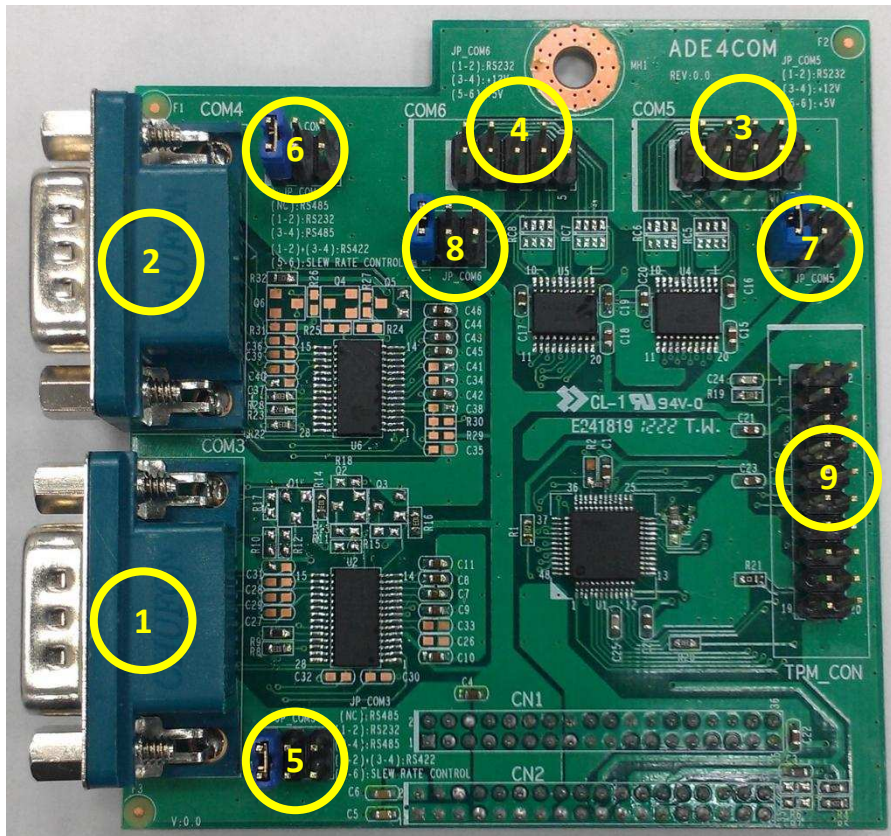
Chipset : Fintek F81216AD LPC to 4 UART

Features :

- Totally provides 4 UART (16550 asynchronous) ports
- Each UART includes 16-byte send/receive FIFO, a programmable baud rate generator, complete modem control capability and an interrupt system.
- Baud rate up to 115.2K

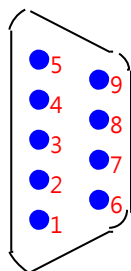
- Support 9-bit protocol
- Support RS422/485 function

Connectors & Pin Definition :



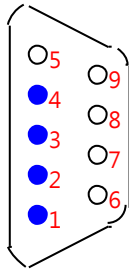
1. COM\_A :

- RS232



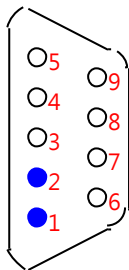
Pin No.	Pin Definition	Pin No.	Pin Definition
1	DCD#	6	DSR#
2	SIN	7	RTS#
3	SOUT	8	CTS#
4	DTR#	9	RI#
5	GND		

- RS422



Pin No.	Pin Definition	Pin No.	Pin Definition
1	TX-(B)	6	NC
2	TX+(A)	7	NC
3	RX+(A)	8	NC
4	RX-(B)	9	NC
5	GND		

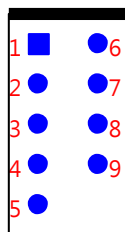
- RS485



Pin No.	Pin Definition	Pin No.	Pin Definition
1	D-(B)	6	NC
2	D+(A)	7	NC
3	NC	8	NC
4	NC	9	NC
5	GND		

2. COM\_B : Please refer to COM\_A

3. COM\_C : RS232 only

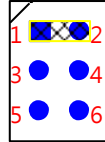


Pin No.	Pin Definition	Pin No.	Pin Definition
1	DCD#	6	DSR#
2	SIN	7	RTS#
3	SOUT	8	CTS#
4	DTR#	9	RI#/+12V/+5V
5	GND		

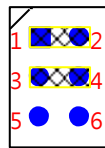
4. COM\_D : RS232 only, please refer to COM\_C

5. JP\_COM\_A : Select RS232/RS422/RS485

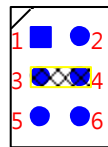
- RS232 : 1-2 close



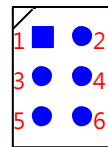
- RS422 : 1-2 and 3-4 close together



- RS485 : 3-4 close or all open



Driver



Receiver

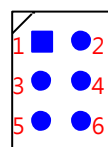
- SLEW RATE CONTROL : 5-6

Open : Maximum data rate

Close : Data rate is 250Kbps

6. JP\_COM\_B : Select RS232/RS422/RS485, please refer to JP\_COM\_A

7. JP\_COM\_C : Select RI#/+12V/+5V



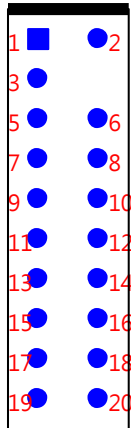
1-2 Close = RS232

3-4 Close = +12V

5-6 Close = +5V

8. JP\_COM\_D : Select RI#/+12V/+5V, please refer to JP\_COM\_C

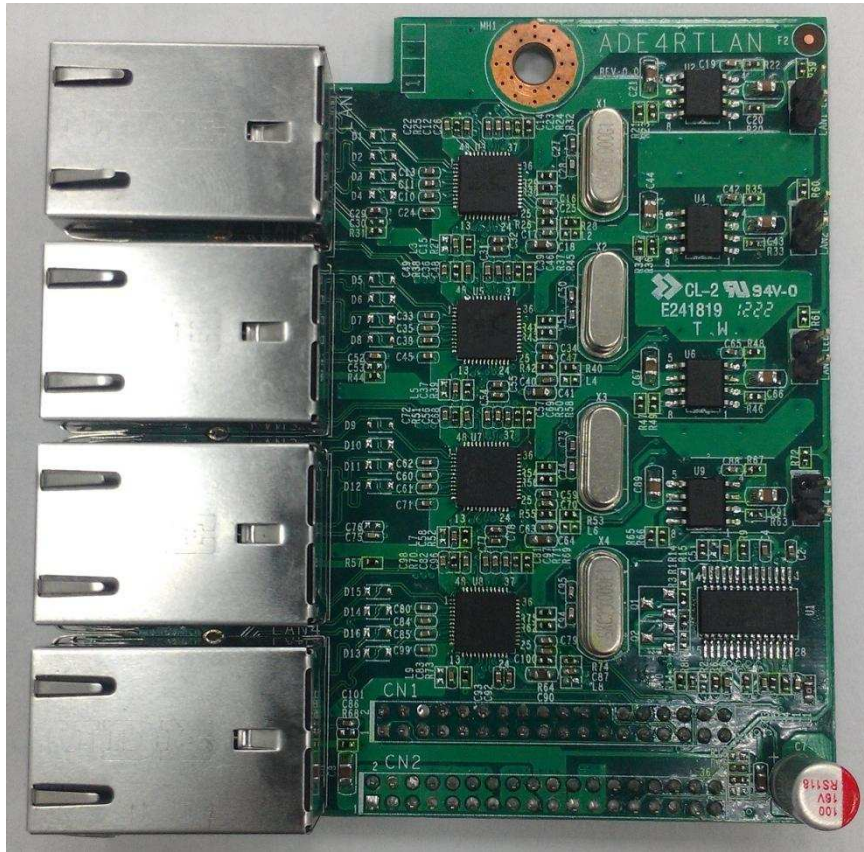
9. TPM\_CON ( Option ) :



Pin No.	Pin Definition	Pin No.	Pin Definition
1	PCICLK	11	LAD0
2	GND	12	GND
3	LFRAME#	13	NC
		14	NC
5	PLTRST#	15	+3.3VSB
6	+5V	16	SERIRQ
7	LAD3	17	GND
8	LAD2	18	GND
9	+3.3V	19	GPIO0
10	LAD1	20	GPIO1

# ADE4RTLAN

Mini-ITX 4 LAN ports Adapter



Dimension : 75 × 82 mm

Chipset : Realtek RTL8111E-VL-CG PCI Express Gigabit Ethernet Controller

Features :

- Integrated 10/100/1000 transceiver
- Auto-Negotiation with Nxt Page capability
- Supports PCI Express 1.1
- Supports pair swap/polarity/skew correction
- Crossover Detection & Auto-Correction

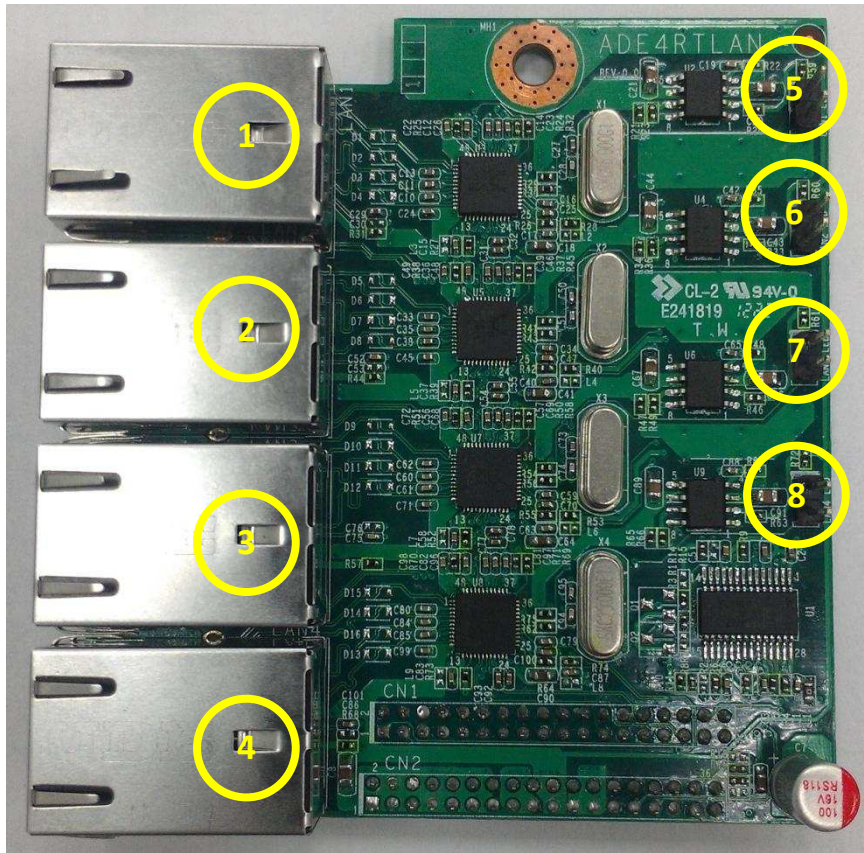
- Wake-on-LAN and remote wake-up support
- Microsoft NDIS5, NDIS6 Checksum Offload (IPv4, IPv6, TCP, UDP)

and Segmentation Task-offload (Large send v1 and Large send v2)

support

- Support Full Duplex flow control (IEEE 802.3x)
- Support jumbo frame to 9K bytes
- Fully compliant with IEEE 802.3, IEEE 802.3u, IEEE 802.3ab
- Support IEEE 802.1P Layer 2 Priority Encoding
- Support IEEE 802.1Q VLAN tagging
- Support IEEE 802.3az Draft 3.0 (EEE)
- Transmit/Receive on-chip buffer support
- Support power down/link down power saving
- Support PCI MSI (Message Signaled Interrupt) and MSI-X
- Support quad core Receive-Side Scaling (RSS)
- Support Protocol Offload (ARP & NS)

Connectors & Pin Definition :



1 ~ 4 : LANA ~ LAND, 4 RJ45 LAN connectors

5 ~ 8 : LANA\_LED ~ LAND\_LED



# ADE4INLAN

Mini-ITX 4 LAN ports Adapter



Dimension : 75 × 82 mm

Chipset : Intel 82574 GbE Controller

Features :

- Programmable host memory receive buffers (256 bytes to 16 KB)
- Intelligent interrupt generation features to enhance driver performance
- Message Signaled Interrupts (MSI and MSI-X)
- Configurable receive and transmit data FIFO, programmable in

## 1KB increments

- Flow Control Support compliant with the 802.3X Specification
- VLAN support compliant with the 802.1Q Specification
- Compliant with the 1Gb/s IEEE 802.3 802.3u 802.3ab

## Specifications

- IEEE 802.3ab auto negotiation support
- Full duplex operation at 10/100/1000 Mb/s
- Half duplex at 10/100 Mb/s
- Auto MDI, MDI-X crossover at all speeds
- TCP segmentation capability compatible with Large Send

## offloading features

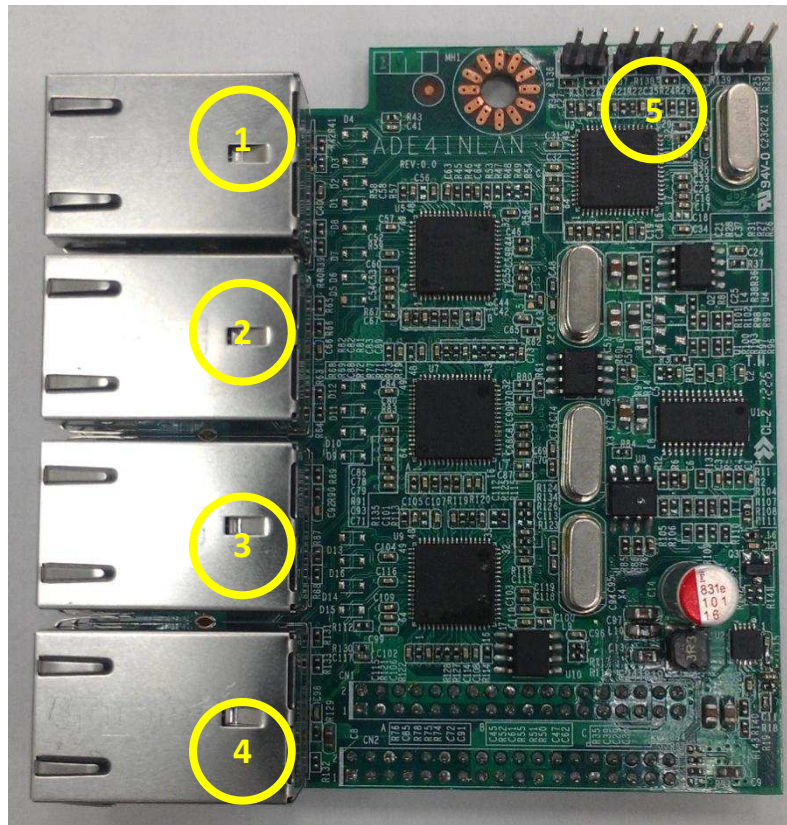
- Support up to 256 KB TCP segmentation (TSOv2)
- Fragmented UDP checksum offload for packet reassemble
- IPv4 and IPv6 checksum offload support (receive, transmit, and

## large send)

- Receive Side Scaling (RSS) with two hardware receive queues
- 9 KB jumbo frame support
- 40 KB packet buffer size
- NC-SI for remote management core

- Magic Packet\* wake-up enable with unique MAC address
- ACPI register set and power down functionality supporting D0 and D3 states
- Full wake up support (APM and ACPI 2.0)
- Smart power down at S0 no link and Sx no link

Connectors & Pin Definition :



1 ~ 4 : LANA ~ LAND, 4 RJ45 LAN connectors

5 : LANA\_LED ~ LAND\_LED

