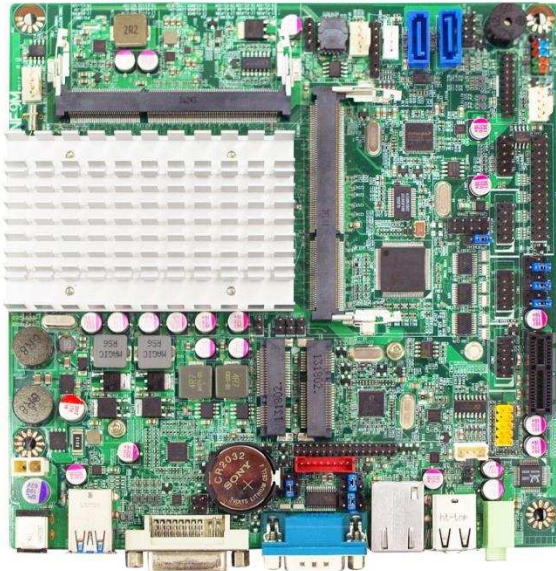


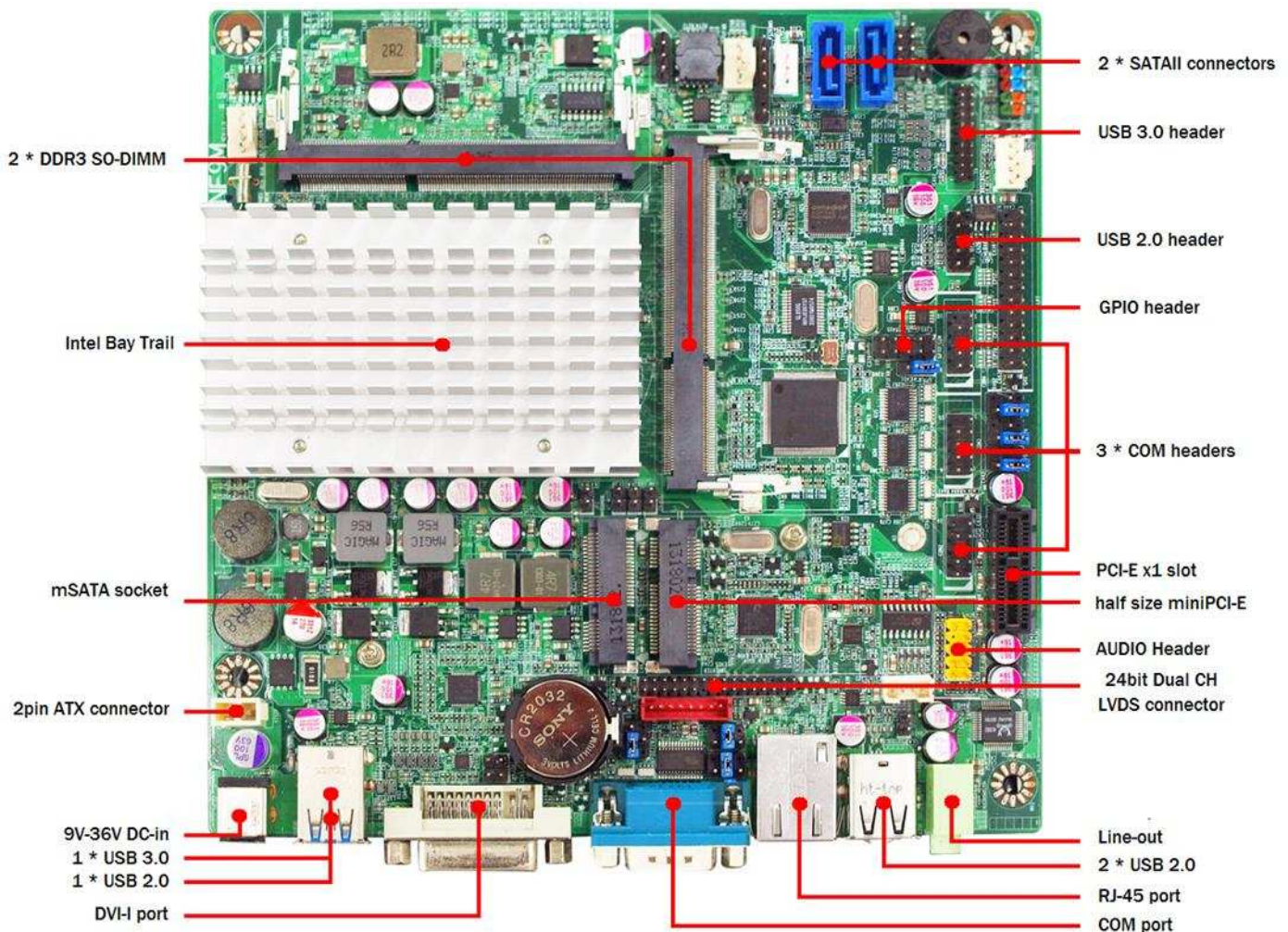
NF9M

Thin Mini-ITX Industrial Motherboard (Bay Trail) DDR3L / DVI-I / LVDS / 3COM / 8USB / 9V~36V



Features

1. Long-Life Embedded Industrial Motherboard with Planned Lifecycle Through Q1'2019
2. Less than 20mm z-Height
3. Intel Bay Trail Platform
4. Supports up to 2 Displays, DVI-I, 24bit LVDS
5. Supports DDR3L-1333 SODIMM up to 8GB Total
6. 2 * SATA2 3Gb/s Ports, 1 * Full-size mSATA Slot,
7. 1 * PCI Express 2.0 x1, 1 * Half-size mini-PCIE Slot
8. Gigabit LAN, 2-ch HD Audio, 3 * Serial Ports (1-EXT, 2-INT)
9. 3 * USB 3.0 Ports, 5 * USB 2.0 Ports, Watchdog Timer, GPIO
10. +9V ~ +36V DC or Alternate 2-pin Internal Power Connector
11. Thin Mini-ITX Form Factor (170mm x 170mm)
12. Available CPU Models: Celeron N2930 & Atom E3827 CPU



Model / Series	<ul style="list-style-type: none"> NF9M
Part No	<ul style="list-style-type: none"> JNF9M-2930 JNF9M-3827
Processor	<ul style="list-style-type: none"> Intel Celeron N2930 SoC, Quad-Core, 1.83GHz, 2.16GHz Burst, 7.5W TDP / 4.5W SDP Intel Atom E3827 SoC, Dual-Core, 1.75GHz, 8W TDP, with AES-NI support
Chipset	<ul style="list-style-type: none"> None
Video	<ul style="list-style-type: none"> Intel HD Graphics in processor
Memory	<ul style="list-style-type: none"> 2 * 204-pin SO-DIMM slots supporting dual channel DDR3L-1333 up to 8GB total 1.35V Memory required
Expansion Slots	<ul style="list-style-type: none"> 1 * PCI Express 2.0 x1 Slot, 1 * PCI Express mini card slot (half-size)
Storage	<ul style="list-style-type: none"> 2 * SATA2 3Gb/s ports, 1 * mSATA slot (Full-size)
Audio	<ul style="list-style-type: none"> Realtek ALC662 2-Channel HD Audio, 3W Amplifier
Network	<ul style="list-style-type: none"> 1 * Realtek RTL8111G Gigabit LAN
Other Features	<ul style="list-style-type: none"> Support AHCI, ACPI S3, CPU Smart FAN, Watchdog Timer 10-255 min/sec
Rear Panel I/O	<ul style="list-style-type: none"> 1 * USB 3.0 Ports, 3 * USB 2.0 Ports, 1 * RJ-45 Port 1 * Serial Port (RS232/422/485) 1 * DVI-I 1 * Audio Jack (Line Out) +9 ~ +36V DC-in jack
Internal I/O	<ul style="list-style-type: none"> 1 * USB Header for 2 * USB 3.0 Ports 1 * USB Headers for 2 * USB 2.0 Ports 1 * 24bit dual channel LVDS & Inverter 1 * AT/ATX power switch mode select jumper 3 * Serial Port Headers (RS232), 1 * PS2 KB/MS Header, SMBUS Header 8-bit GPIO Header, Chassis Intrusion Header, Parallel port Header 2-pin Alternate internal power connector
BIOS	<ul style="list-style-type: none"> AMI 64MB SMT Flash ROM
Box Contents	<ul style="list-style-type: none"> NF9M Motherboard, SATA Cable, Manual, DVD Driver Disk, Thin & Standard I/O Shields
Certification	<ul style="list-style-type: none"> CE, FCC, RoHS, ErP/EuP
Temperature	<ul style="list-style-type: none"> Operating Temperature 0~60 ° C, Storage Temperature -20-85 ° C
Form Factor	<ul style="list-style-type: none"> Thin Mini-ITX Form Factor (170mm x 170mm)
Warranty	<ul style="list-style-type: none"> 2 Years Limited Warranty

*Specifications subject to change without notice, not responsible for typographical errors.



Jetway Computer Corporation
Phone: 510-857-0130 Fax: 510-857-0138
38507 Cherry St., Suite E, Newark, CA 94560
www.jetwaycomputer.com

