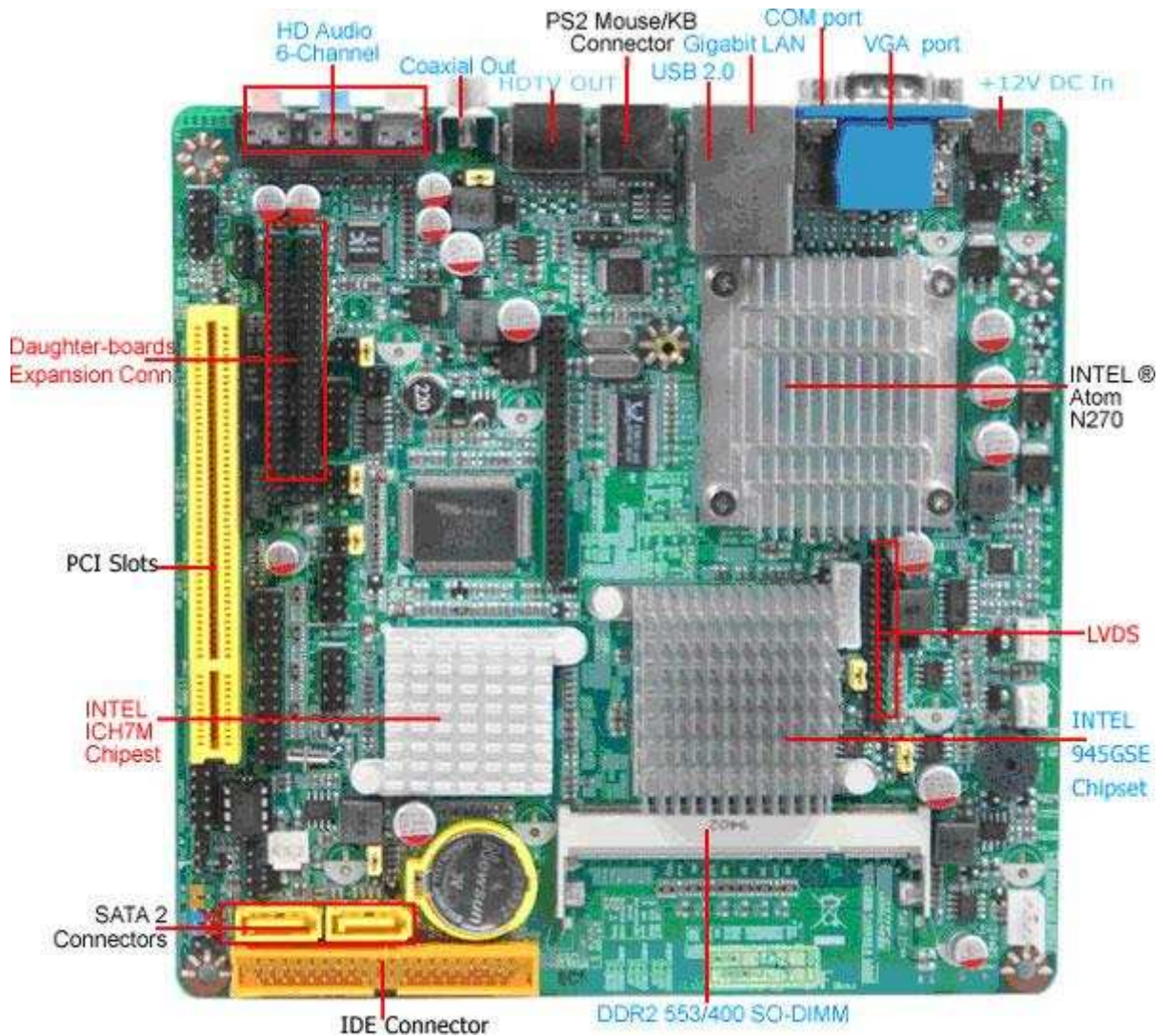


NF92-270-LF



1. INTEL®945GSE +ICH7M Chipset
2. Built-in INTEL® GMA 950 HD Graphics Core
3. Embedded INTEL® Atom N270 CPU
4. Built-in Gigabit LAN
5. Power On Board
6. Integrated ALC662 HD Audio CODEC with 6-CH
7. Onboard 18-bit dual channel LVDS connector
8. Support Watch dog Technology
9. Mini-ITX Form Factor (170mm x 170mm)



Board Specifications

■ CPU	■ INTEL [®] Atom N270 CPU (45nm,512K Cache, 1.60 GHz, 533 MHz FSB)
■ Chipset	<ul style="list-style-type: none"> ■ INTEL[®] 945GSE + ICH7M chipset ■ Build-in INTEL[®] GMA 950 Graphics Core (Share Memory Size: 128/224MB) ■ Front Side Bus 533MHz
■ Memory	■ 1 * SO-DIMM Sockets for un-buffered Single Channel DDR2 533/400 SDRAM up to 2 GB
■ Expansion Slots	■ 1 * PCI slot
■ Storage	<ul style="list-style-type: none"> ■ 2 * Serial ATA2 3Gb/s connectors ■ 1 * Ultra DMA 100 / 66 IDE connector
■ Audio	■ Realtek ALC662 6-Channel HD Audio CODEC
■ Ethernet LAN	■ Realtek RTL8111DL PCI-E Gigabit Ethernet LAN
■ LVDS	■ Onboard 18-bit dual channel LVDS connector
■ USB	■ Embedded 6 * USB 2.0/1.1
■ Special Features	<ul style="list-style-type: none"> ■ Intel Diamondville Platform ■ Support ACPI S3 ■ Support CPU Smart FAN ■ Support DC FAN
■ Rear Panel I / O	<ul style="list-style-type: none"> ■ 2 * USB 2.0/1.1 ports ■ 1 * Keyboard connector ■ 1 * RJ-45 port ■ 3 * Audio I/O ports (Line-in, MIC and line-out) ■ 1 * VGA port ■ 1 * COM port for RS-232 ■ 1 * HDTV-OUT ■ 1 * Coaxial S/PDIF out ■ 1 * +12V DC In
■ Internal I / O	<ul style="list-style-type: none"> ■ 2 * USB 2.0/1.1 headers for 4 USB 2.0 ports ■ NB / Chassis Fan connectors; ■ 1 * 4-pin Power connector ■ 1 * 32-pin LVDS header & 1 * GPIO header ■ 1 * COM header (COM2 for RS-422/485) ■ 1 * AUDIO header ■ 1 * JWDB Pin Header & 1 * Parallel port
■ BIOS	■ Award 8MB DIP Flash ROM
■ Form Factor	■ Mini ITX Form Factor (170mm x 170mm)

*For further information please visit the website at <http://www.jetwaycomputer.com/>

*The Specification may be changed without further notice.