

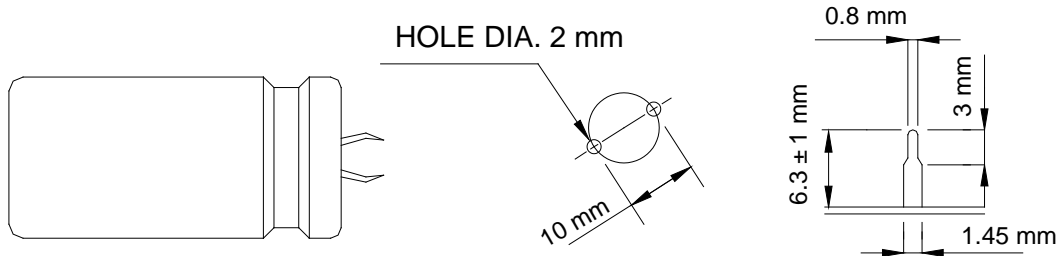
## TH SERIES

基板自立型輔強端子品適用於各式電子產品之整流濾波電路，如電源供應器、音響、電視機等  
 Withstand high ripple current. Suitable for filter of consumer electronic products,  
 Such as TV sets, power supplies and high power stereos, etc./Large capacitance

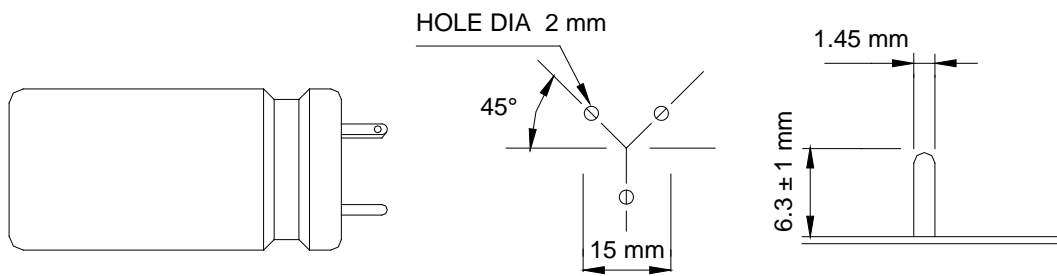
### SPECIFICATION :

ITEMS	CHARACTERISTIC									
Rated Voltage Range(vdc) 额定电压	-40°C ~ +105°C					-25°C ~ +105°C				
Operating Temperature Range 使用温度范围	6.3v ~ 100v DC					160v ~ 500v DC				
Capacitance Tolerance 电容量容许差	±20% (M) 120Hz 20°C									
Leakage Current 漏泄电流	I = 0.03CV + 15 (uA) Whichever is smaller after 5 minutes where I = Leakage Current , C = Rated Capacitance , V = rated DC working voltage									
Dissipation Factor (tanδ) 120Hz, 20°C 损失角之正接	at 120Hz , 20°C									
	WV(vdc)	6.3	10	16	25	35	50	63 to 100	160 to 250	315 to 500
	DF(tan δ)	0.60	0.50	0.45	0.35	0.30	0.25	0.20	0.15	0.25
Low Characteristics 低温特性	Impedance ratio at 120Hz									
	Rated Voltage (v)	6.3~16	25	35	50~63	80~100	160~400	450~500		
	-25 °C / +20 °C	4	3	3	2	2	4	8		
	-40 °C / +20 °C	15	10	8	6	5	--	--		
Load Life 高温负载寿命	*The following specifications shall be satisfied when the capacitors are restored to 20°C after the rated voltage applied for 2000 hrs at 105°C.									
	Test Time					2000 Hrs				
	Capacitance Change					≤ ±25% of initial value				
	Dissipation Factor					Less than 200% of specified value				
Leakage Current					Within specified value					
Shelf Life 高温无负载寿命	* The following specifications shall be satisfied when the capacitors are restored to 20°C after exposing them for 500 hrs at 105°C without voltage applied.									
	Test Time					500Hrs				
	Capacitance Change					≤ ±25%				
	Dissipation Factor					Less than 200% of specified value				
Leakage Current					Less than 200% of specified value					

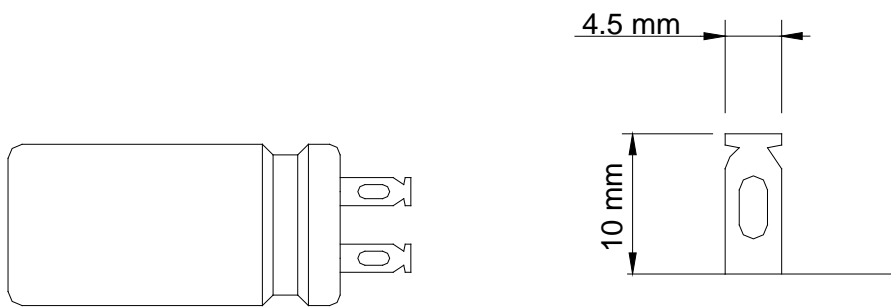
**STANDARD MOUNTING DIMENSIONS**



**OPTION PS**  
**TWO TERMINAL SNAP-IN TYPE    PCB HOLE POSITION    LUG DIMENSIONS**



**OPTION PC3**  
**THREE TERMINAL PC TYPE    PCB HOLE POSITION    PIN DIMENSIONS**



**OPTION SL**  
**SOLDER LUG TYPE    LUG DIMENSIONS**

**OTHER TYPES AVAILABLE UPON REQUEST**

Standard Products Table

额定电压	容量	尺寸	涟波电流 Arms	额定电压	容量	尺寸	涟波电流 Arms	
WV(vdc)	$\mu F$	$\phi$ DxL(mm)	105 °C,120Hz	WV(vdc)	$\mu F$	$\phi$ DxL(mm)	105 °C,120Hz	
6.3v	18000	25X25	1.9	16v	33000	30X45	4.3	
	22000	25X30	2.2		33000	35X35	4.2	
	22000	30X25	2.2		39000	30X50	4.8	
	27000	25X35	2.5		39000	35X40	4.7	
	27000	30X25	2.5		47000	35X45	5.4	
	33000	25X40	2.9		25v	6800	25X25	1.8
	33000	30X30	2.8	8200		25X30	2.1	
	33000	35X25	2.9	10000		25X35	2.4	
	39000	25X40	3.1	10000		30X25	2.3	
	39000	30X35	3.2	12000		25X40	2.7	
	39000	35X30	3.4	12000		30X30	2.7	
	47000	25X50	3.6	12000		35X25	2.7	
	47000	30X40	3.6	15000		25X45	3.1	
	47000	35X30	3.7	15000		30X35	3.1	
	56000	30X45	4.1	15000		35X30	3.2	
	56000	35X35	4.1	18000		25X50	3.5	
	68000	30X50	4.7	18000		30X40	3.5	
	68000	35X40	4.6	18000		35X30	3.5	
	82000	35X45	5.3	22000		30X45	4.0	
	10v	15000	25X25	1.9		22000	35X35	3.6
18000		25X30	2.2	27000		35X45	4.7	
22000		25X35	2.5	33000		35X50	5.3	
22000		30X25	2.4	35v		4700	25X25	1.8
27000		25X40	2.9			5600	25X30	1.9
27000		30X30	2.8			5600	30X25	1.9
33000		25X45	3.3		6800	25X35	2.2	
33000		30X35	3.2		8200	25X40	2.5	
33000		35X30	3.1		8200	30X30	2.7	
39000		25X50	3.6		8200	35X25	2.7	
39000		30X40	3.9		10000	25X45	2.8	
39000		35X30	3.4		10000	30X35	2.9	
47000		30X45	4.1		10000	35X30	2.9	
47000		35X35	3.7		12000	25X50	3.2	
56000		30X50	4.6		12000	30X40	3.2	
56000		35X40	4.6		12000	35X30	2.9	
68000	35X50	5.4	15000		30X45	3.7		
16v	10000	25X25	1.9		15000	35X35	3.6	
	12000	25X30	2.2		18000	35X40	4.3	
	12000	30X25	2.4	22000	35X50	4.9		
	15000	25X35	2.5	50v	2700	25X25	1.7	
	15000	30X25	2.5		3300	25X30	1.8	
	18000	25X40	2.9		3900	25X35	2.1	
	18000	30X30	2.8		3900	30X25	1.9	
	18000	35X25	2.9		4700	25X35	2.3	
	22000	25X45	3.3		4700	30X30	2.2	
	22000	30X35	3.2		4700	35X25	2.4	
	22000	35X25	3.2		5600	25X40	2.7	
	27000	25X50	3.7		5600	30X35	2.7	
	27000	30X40	3.7		5600	35X30	2.7	
	27000	35X30	3.4		6800	25X50	3.3	

Standard Products Table

额定电压	容量	尺寸	涟波电流 Arms	额定电压	容量	尺寸	涟波电流 Arms
WV(vdc)	$\mu F$	$\phi$ DxL(mm)	105 °C, 120Hz	WV(vdc)	$\mu F$	$\phi$ DxL(mm)	105 °C, 120Hz
50v	6800	30X40	3.3	100v	1500	35X25	1.9
	6800	35X30	3.2		1800	25X45	2.2
	8200	30X45	3.6		1800	30X35	2.5
	8200	35X35	3.5		1800	35X25	2.1
	10000	30X50	4.0		2200	25X50	2.5
	10000	35X40	4.0		2200	30X40	2.7
	12000	35X45	4.5		2200	35X30	2.5
63v	1800	25X25	1.5		2700	30X45	2.8
	2200	25X30	1.7		2700	35X35	2.8
	2700	25X35	1.9		3300	30X50	3.2
	2700	30X25	1.7		3300	35X40	3.2
	3300	25X40	2.2		3900	35X45	3.6
	3300	30X30	2.2		4700	35X50	3.8
	3300	35X25	2.0		160v	390	25X25
	3900	25X45	2.5	470		25X25	1.5
	3900	30X35	2.5	560		22X35	1.6
	4700	25X50	2.8	560		25X30	1.6
	4700	30X40	2.8	680		25X35	1.8
	4700	35X30	2.7	680		30X25	1.8
	5600	30X45	3.2	820		25X40	2.0
	5600	35X35	3.1	820		30X30	2.0
6800	30X50	3.6	820	35X25		2.0	
6800	35X40	3.6	1000	25X45		2.2	
8200	35X45	3.9	1000	30X35		2.2	
10000	35X50	4.4	1000	35X30		2.2	
80v	1200	25X25	1.3	1200		25X50	2.4
	1500	25X30	1.6	1200		30X40	2.4
	1800	25X30	1.7	1200	35X30	2.4	
	1800	30X25	1.6	1500	25X55	2.9	
	2200	25X35	2.0	1500	30X45	2.8	
	2200	30X30	2.0	1500	35X35	2.8	
	2200	35X25	2.0	1800	30X50	3.3	
	2700	25X45	2.3	1800	35X45	3.0	
	2700	30X35	2.3	2200	30X60	3.8	
	2700	35X25	2.2	2200	35X50	3.5	
	3300	25X50	2.6	2700	35X60	4.0	
	3300	30X40	2.6	3300	35X70	4.6	
	3300	35X30	2.4	200v	330	25X25	1.2
	3900	30X45	3.0		390	25X25	1.3
3900	35X35	2.9	470		25X30	1.5	
4700	30X50	3.3	470		30X25	1.5	
4700	35X40	3.3	560		25X35	1.6	
5600	35X45	3.8	560		30X30	1.6	
6800	35X50	3.9	680		25X40	1.7	
100v	820	25X25	1.3		680	30X35	1.7
	1000	25X30	1.5		680	35X30	1.7
	1200	25X35	1.7		820	25X50	2.0
	1200	30X25	1.6		820	30X35	2.0
	1500	25X40	1.9		820	35X30	2.0
	1500	30X30	1.9		1000	25X60	2.3

Standard Products Table

额定电压	容量	尺寸	涟波电流 Arms	额定电压	容量	尺寸	涟波电流 Arms	
WV(vdc)	$\mu F$	$\phi$ DxL(mm)	105 °C,120Hz	WV(vdc)	$\mu F$	$\phi$ DxL(mm)	105 °C,120Hz	
200v	1000	30X45	2.1	300v	560	30X55	2.0	
	1000	35X35	2.2		560	35X45	2.0	
	1200	25X60	2.2		680	30X60	2.1	
	1200	30X50	2.2		680	35X50	2.1	
	1200	35X40	2.4		820	35X45	2.2	
	1500	30X55	2.6		1000	35X70	2.5	
	1500	35X45	2.6		350v	120	25X25	0.7
	1800	30X60	2.7			150	25X30	0.8
	1800	35X50	2.7			180	25X35	0.9
	2200	35X60	3.2			180	30X30	0.9
250v	220	25X25	0.9	220		25X40	1.0	
	270	25X30	1.1	220		30X30	1.0	
	330	25X30	1.3	270		25X50	1.1	
	390	25X35	1.4	270		30X35	1.1	
	390	30X30	1.4	270		35X30	1.1	
	470	25X40	1.6	330		25X55	1.2	
	470	30X30	1.3	330		30X45	1.2	
	470	35X25	1.4	330		35X35	1.2	
	560	25X45	1.6	390		25X60	1.3	
	560	30X35	1.6	390		30X50	1.3	
	560	35X30	1.6	390		35X40	1.3	
	680	25X50	1.7	470		25X70	1.4	
	680	30X40	1.8	470		30X55	1.4	
	680	35X35	1.8	470		35X45	1.4	
	820	25X60	1.9	560		30X60	1.6	
	820	30X45	1.9	560		35X50	1.6	
	820	35X35	1.9	680	30X70	1.8		
	1000	30X50	2.0	680	35X60	1.9		
	1000	35X40	2.0	820	35X70	2.1		
	1200	30X60	2.2	400v	100	25X25	0.7	
1200	35X45	2.2	120		25X30	0.7		
1500	35X60	2.4	120		30X25	0.7		
1800	35X70	2.7	150		25X35	0.8		
300v	150	25X30	0.8		150	30X30	0.8	
	180	25X35	0.9		180	25X40	0.9	
	180	30X30	0.9		180	30X30	0.9	
	220	25X40	1.0		180	35X25	0.9	
	220	30X30	1.0		220	25X45	1.0	
	270	25X45	1.1		220	30X35	1.0	
	270	30X35	1.1		220	35X30	1.0	
	270	35X30	1.1		270	25X50	1.1	
	330	25X50	1.3		270	30X40	1.1	
	330	30X40	1.3		270	35X35	1.1	
	330	35X35	1.3		330	25X60	1.2	
	390	25X50	1.4		330	30X45	1.2	
	390	30X45	1.4		330	35X35	1.2	
	390	35X35	1.4		390	25X60	1.2	
	470	25X60	1.7		390	30X50	1.2	
	470	30X50	1.7		390	35X40	1.3	
	470	35X40	1.7	470	30X50	1.3		

Standard Products Table

额定电压	容量	尺寸	涟波电流 Arms
WV(vdc)	$\mu F$	$\phi$ DxL(mm)	105 °C,120Hz
400v	470	35X45	1.4
	560	30X60	1.5
	560	35X50	1.5
	680	35X60	1.6
	820	40X80	1.8
	1000	40X100	2.0
450v	68	25X25	0.5
	82	25X25	0.6
	100	25X30	0.6
	100	30X25	0.6
	120	25X35	0.8
	120	30X30	0.8
	120	35X25	0.7
	150	25X40	0.8
	150	30X30	0.8
	150	35X25	0.7
	180	25X45	0.9
	180	30X35	0.9
	220	25X50	1.0
	220	30X40	1.0
	220	35X30	1.0
	270	25X60	1.1
	270	30X45	1.2
	270	35X35	1.2
	330	30X50	1.2
	330	35X40	1.3
390	30X60	1.4	
390	35X45	1.4	
470	35X50	1.5	
560	35X60	1.8	
500v	100	25X60	0.7
	120	35X40	0.8
	150	35X45	0.9
	180	35X50	1.0
	220	35X55	1.1
	270	35X60	1.2