

# TRH SERIES

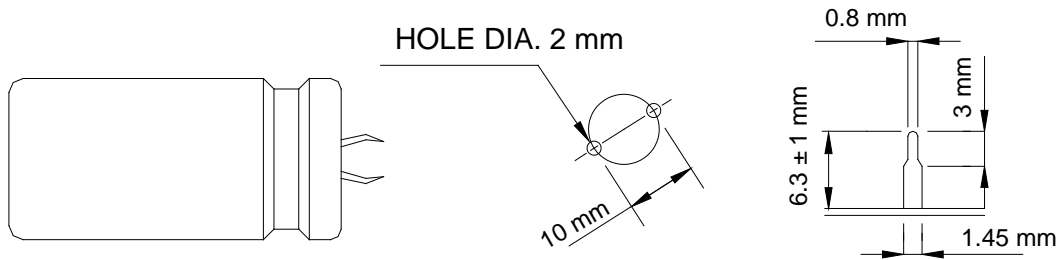
基板自立型輔強端子品，適用於各式電子產品之整流濾波電路，如電源供應器、音響、電視機等

Withstand high ripple current. Suitable for filter of consumer electronic products, Such as TV sets, power supplies and high power stereos, etc./Large capacitance

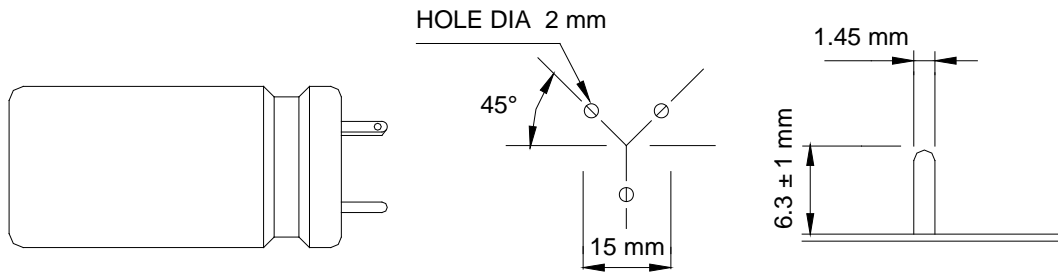
## SPECIFICATION :

ITEMS	CHARACTERISTIC									
Rated Voltage Range 额定电压	6.3v ~ 100v DC					160v ~ 500v DC				
Operating Temperature Range 使用温度范围	-40°C ~ +105°C					-25°C ~ +105°C				
Capacitance Tolerance 电容量容许差	±20(M), 120Hz 20 °C									
Leakage Current 漏泄电流	I = 0.03CV + 15 (uA) Whichever is smaller after 5 minutes where I = Leakage Current , C = Rated Capacitance , V = rated DC working voltage									
Dissipation Factor (tanδ) 120Hz, 20°C 损失角之正接	at 120Hz , 20°C									
	WV(vdc)	6.3	10	16	25	35	50	63 to 100	160 to 250	300 to 500
Low Characteristics 低温特性	Impedance ratio at 120Hz									
	Rated Voltage (v)	6.3~16		25	35	50~63	80~100	160~400	450~500	
	-25 °C / +20 °C	4		3	3	2	2	4	8	
Load Life 高温负载寿命	The following specifications shall be satisfied when the capacitors are restored to 20 °C after the rated voltage applied for 1000 hrs at 105°C.									
	Test Time					1000 Hrs				
	Capacitance Change					≤±25% of initial value				
	Dissipation Factor					Less than 200% of specified value				
Leakage Current					Within specified value					
Shelf Life 高温无负载寿命	The following specifications shall be satisfied when the capacitors are restored to 20 °C after exposing them for 500 hrs at 105°C without voltage applied.									
	Test Time					500Hrs				
	Capacitance Change					≤±25%				
	Dissipation Factor					Less than 200% of specified value				
Leakage Current					Less than 200% of specified value					

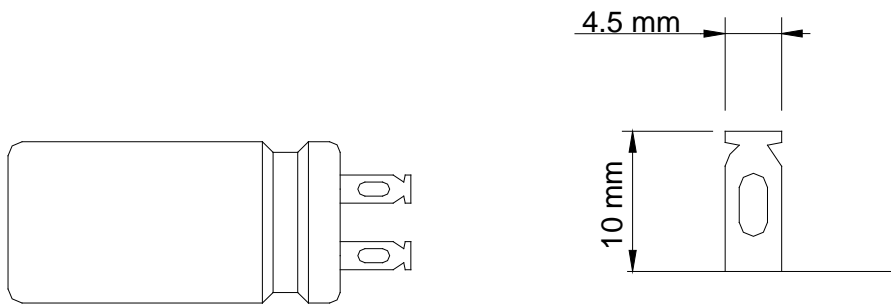
**STANDARD MOUNTING DIMENSIONS**



OPTION PS  
TWO TERMINAL SNAP-IN TYPE      PCB HOLE POSITION      LUG DIMENSIONS



OPTION PC3  
THREE TERMINAL PC TYPE      PCB HOLE POSITION      PIN DIMENSIONS



OPTION SL  
SOLDER LUG TYPE      LUG DIMENSIONS

**OTHER TYPES AVAILABLE UPON REQUEST**

Standard Products Table

额定电压	容量	尺寸	涟波电流 Arms	额定电压	容量	尺寸	涟波电流 Arms	
WV(vdc)	$\mu F$	$\phi$ DxL(mm)	105 °C,120Hz	WV(vdc)	$\mu F$	$\phi$ DxL(mm)	105 °C,120Hz	
6.3v	18000	25X25	1.9	16v	33000	30X45	4.3	
	22000	25X30	2.2		33000	35X35	4.2	
	22000	30X25	2.2		39000	30X50	4.8	
	27000	25X35	2.5		39000	35X40	4.7	
	27000	30X25	2.5		47000	35X45	5.4	
	33000	25X40	2.9		25v	6800	25X25	1.8
	33000	30X30	2.8	8200		25X30	2.1	
	33000	35X25	2.9	10000		25X35	2.4	
	39000	25X40	3.1	10000		30X25	2.3	
	39000	30X35	3.2	12000		25X40	2.7	
	39000	35X30	3.4	12000		30X30	2.7	
	47000	25X50	3.6	12000		35X25	2.7	
	47000	30X40	3.6	15000		25X45	3.1	
	47000	35X30	3.7	15000		30X35	3.1	
	56000	30X45	4.1	15000		35X30	3.2	
	56000	35X35	4.1	18000		25X50	3.5	
	68000	30X50	4.7	18000		30X40	3.5	
	68000	35X40	4.6	18000		35X30	3.5	
	82000	35X45	5.3	22000		30X45	4.0	
	10v	15000	25X25	1.9		22000	35X35	3.6
18000		25X30	2.2	27000		35X45	4.7	
22000		25X35	2.5	33000		35X50	5.3	
22000		30X25	2.4	35v		4700	25X25	1.8
27000		25X40	2.9			5600	25X30	1.9
27000		30X30	2.8			5600	30X25	1.9
33000		25X45	3.3		6800	25X35	2.1	
33000		30X35	3.2		8200	25X40	2.5	
33000		35X30	3.1		8200	30X30	2.7	
39000		25X50	3.6		8200	35X25	2.7	
39000		30X40	3.6		10000	25X45	2.8	
39000		35X30	3.4		10000	30X35	2.9	
47000		30X45	4.1		10000	35X30	2.9	
47000		35X35	3.7		12000	25X50	3.2	
56000		30X50	4.6		12000	30X40	3.2	
56000		35X40	4.6		12000	35X30	2.9	
68000	35X50	5.4	15000		30X45	3.7		
16v	10000	25X25	1.9		15000	35X35	3.6	
	12000	25X30	2.2		18000	35X40	4.3	
	12000	30X25	2.4	22000	35X50	4.9		
	15000	25X35	2.5	50v	2700	25X25	1.7	
	15000	30X25	2.5		3300	25X30	1.8	
	18000	25X40	2.9		3900	25X35	2.1	
	18000	30X30	2.8		3900	30X25	1.9	
	18000	35X25	2.9		4700	25X35	2.3	
	22000	25X45	3.3		4700	30X30	2.2	
	22000	30X35	3.2		4700	35X25	2.4	
	22000	35X25	3.2		5600	25X40	2.7	
	27000	25X50	3.7		5600	30X35	2.7	
	27000	30X40	3.7		5600	35X25	2.7	
	27000	35X30	3.4		6800	25X50	3.3	

Standard Products Table

额定电压	容量	尺寸	涟波电流 Arms	额定电压	容量	尺寸	涟波电流 Arms
WV(vdc)	$\mu F$	$\phi$ DxL(mm)	105 °C,120Hz	WV(vdc)	$\mu F$	$\phi$ DxL(mm)	105 °C,120Hz
50v	6800	30X40	3.3	100v	1500	35X25	1.9
	6800	35X30	3.2		1800	25X45	2.2
	8200	30X45	3.6		1800	30X35	2.5
	8200	35X35	3.5		1800	35X25	2.1
	10000	30X50	4.0		2200	25X50	2.5
	10000	35X40	4.0		2200	30X40	2.7
	12000	35X45	4.5		2200	35X30	2.5
63v	1800	25X25	1.5		2700	30X45	2.8
	2200	25X30	1.7		2700	35X35	2.8
	2700	25X35	1.9		3300	30X50	3.2
	2700	30X25	1.7		3300	35X40	3.2
	3300	25X40	2.2		3900	35X45	3.6
	3300	30X30	2.2		4700	35X50	3.8
	3300	35X25	2.0		160v	680	25X25
	3900	25X45	2.5	820		25X30	2.0
	3900	30X35	2.5	820		30X25	2.0
	3900	35X25	2.2	1000		25X35	2.2
	4700	25X50	2.8	1000		30X25	2.2
	4700	30X40	2.8	1200		25X40	2.3
	4700	35X30	2.7	1200		30X30	2.3
	5600	30X45	3.2	1200		35X25	2.3
5600	35X35	3.1	1500	25X45		2.5	
6800	30X50	3.6	1500	30X35		2.5	
6800	35X40	3.6	1500	35X30		2.5	
8200	35X45	3.9	1800	25X50		2.7	
10000	35X50	4.4	1800	30X40		2.7	
80v	1200	25X25	1.3	1800		35X30	2.7
	1500	25X30	1.6	2200	30X45	2.9	
	1800	25X30	1.7	2200	35X35	2.9	
	1800	30X25	1.6	2700	30X50	3.1	
	2200	25X35	2.0	2700	35X40	3.1	
	2200	30X30	2.0	3300	35X50	3.3	
	2200	35X25	2.0	200v	560	25X25	1.6
	2700	25X45	2.3		680	25X30	1.7
	2700	30X35	2.3		820	25X35	2.0
	3300	25X50	2.6		1000	25X45	2.3
	3300	30X40	2.6		1000	30X30	2.3
	3300	35X30	2.4		1000	35X25	2.3
	3900	30X45	3.0		1200	25X50	2.6
	3900	35X35	2.9		1200	30X35	2.6
4700	30X50	3.3	1200		35X30	2.6	
4700	35X40	3.3	1500		30X40	2.8	
5600	35X45	3.8	1500		35X30	2.8	
6800	35X50	3.9	1800		30X45	3.0	
100v	820	25X25	1.3		1800	35X40	3.0
	1000	25X30	1.5		2200	35X45	3.4
	1200	25X35	1.7	250v	330	25X25	1.2
	1200	30X25	1.6		390	25X25	1.3
	1500	25X40	1.9		470	25X30	1.4
	1500	30X30	1.9		470	30X25	1.4

Standard Products Table

额定电压	容量	尺寸	涟波电流 Arms	额定电压	容量	尺寸	涟波电流 Arms
WV(vdc)	$\mu F$	$\phi$ DxL(mm)	105 °C,120Hz	WV(vdc)	$\mu F$	$\phi$ DxL(mm)	105 °C,120Hz
250v	560	25X35	1.5	400v	220	30X25	1.1
	680	25X40	1.7		270	30X30	1.2
	680	30X30	1.7		270	35X25	1.2
	680	35X25	1.7		330	25X45	1.4
	820	25X45	2.0		330	30X35	1.4
	820	30X35	2.0		330	35X30	1.4
	820	35X30	2.0		390	25X50	1.5
	1000	30X40	2.2		390	30X40	1.5
	1000	35X30	2.2		390	35X30	1.5
	1200	30X45	2.3		470	30X45	1.6
	1200	35X35	2.3		470	35X35	1.6
	1500	35X45	2.5		560	30X60	1.9
	1800	35X50	2.7		560	35X50	1.9
	300v	220	25X25		1.0	450v	680
270		25X30	1.1	100	25X25		0.6
330		25X35	1.2	120	25X30		0.7
390		25X40	1.3	150	25X30		0.7
390		30X30	1.3	180	25X40		0.8
390		35X25	1.3	180	30X30		0.8
470		25X45	1.4	220	25X45		1.0
470		30X35	1.4	220	30X30		1.0
470		35X25	1.4	220	35X25		1.0
560		25X50	1.5	270	25X50		1.1
560		30X40	1.5	270	30X40		1.1
560		35X30	1.5	270	35X30		1.1
680		30X45	1.7	330	30X45		1.3
680		35X35	1.7	330	35X35		1.3
820	30X50	2.0	390	30X50	1.5		
820	35X40	2.0	390	35X40	1.5		
1000	35X45	2.3	470	35X45	1.7		
350v	180	25X25	0.9	500v	560	35X50	1.9
	220	25X30	1.0		82	25X40	0.6
	270	25X30	1.1		100	25X45	0.7
	270	30X25	1.1		120	25X50	0.8
	330	25X40	1.2		120	35X30	0.8
	330	30X30	1.2		150	30X40	0.9
	390	25X45	1.3		180	30X50	1.0
	390	30X35	1.3		220	35X45	1.1
	470	25X50	1.4		270	35X50	1.2
	470	30X35	1.4				
	470	35X30	1.4				
	560	30X45	1.5				
	560	35X35	1.5				
	680	30X50	1.7				
680	35X40	1.7					
820	35X45	1.9					
400v	150	25X25	0.8				
	180	25X30	0.9				
	220	25X35	1.1				