

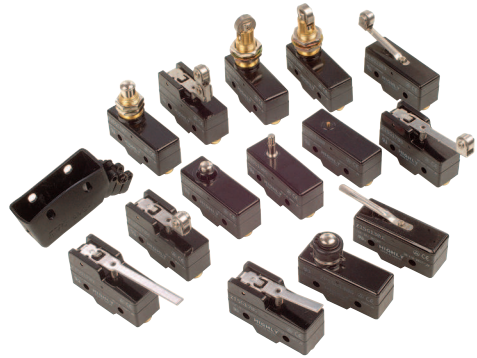
# SNAP ACTION SWITCH

## Features

- High precision basic switch in a variety of styles
- Wide margins of operating conditions increase the operating speed range
- Available in general purpose



• BAUART  
GEPRÜFT  
• TYPE  
APPROVED



## Specifications

Item	Standard	H SERIES
<b>Rating</b>	20(4)A 250VAC EN 61058-1 15A 125VAC or 250VAC UL 1054 1/2A 125VDC 1/4A 250VDC 1/8HP 125VAC 1/4HP 250VAC	20A(12A) 125/250VAC 0.5A 125/250VDC UL 61058-1
<b>Contact Resistance</b>	15mΩ max. (initial)	
<b>Insulation Resistance</b>	100MΩ min. (at 500V DC)	
<b>Dielectric Strength</b>	Between terminals of same polarity AC 1000V (50/60Hz for 1minute)	
<b>Electrically Life</b>	100,000 operations min.	
<b>Mechanically Life</b>	1,000,000 operations min.	

## Product Selection

Z15G

1 2

### 1.SOLDER ACTUATOR TYPES

- 1100: Pin plunger
- 1101: Hinge lever
- 1103: Short hinge roller lever
- 1105: Slim spring plunger
- 1106: Short spring plunger
- 1107: Panel mount plunger
- 1108: Panel mount roller plunger
- 1118: Panel mount cross roller plunger
- 1501: Hinge lever
- 1502: Short Hinge lever
- 1503: Hinge roller lever
- 1504: Short hinge roller lever
- 1544: Unidirectional short hinge roller lever

### SCREW ACTUATOR TYPES

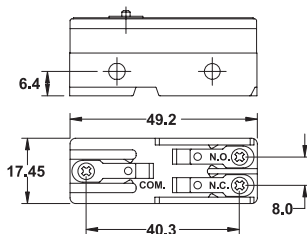
- 1300: Pin plunger
- 1301: Hinge lever
- 1303: Short hinge roller lever
- 1305: Slim spring plunger
- 1306: Short spring plunger
- 1307: Panel mount plunger
- 1308: Panel mount roller plunger
- 1318: Panel mount cross roller plunger
- 1701: Hinge lever
- 1702: Short Hinge lever
- 1703: Hinge roller lever
- 1704: Short hinge roller lever
- 1744: Unidirectional short hinge roller lever

### 2.Standard

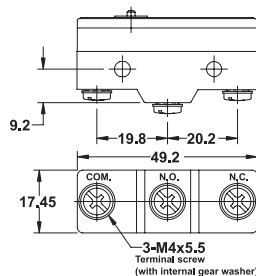
- 20(4)A 250VAC EN 61058-1
- 15A 125VAC or 250VAC UL 1054
- 1/2A 125VDC 1/4A 250VDC
- 1/8HP 125VAC 1/4HP 250VAC
- 20A(12A) 125/250VAC
- H 0.5A 125/250VDC
- UL 61058-1

## Terminals

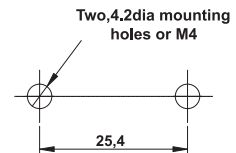
### Solder Terminal



### Screw Terminal



### Mounting Hole



**HIGHLY**

B5

Design, specifications are subject to change without notice.

# SNAP ACTION SWITCH

## Operating Characteristics

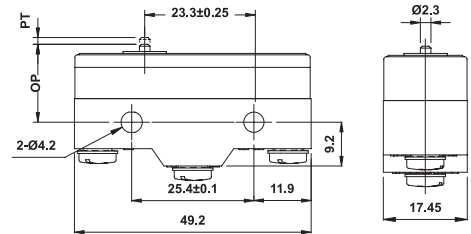
Unit: mm

Item Operating Characteristics Dimensions

### Z15G1300



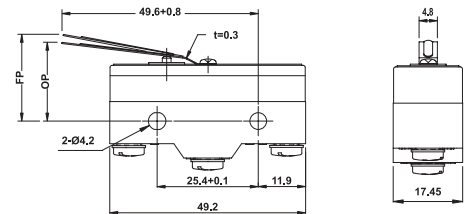
Terminal	Item No.
Solder	Z15G1100
Screw	Z15G1300
OF	250—350g
RF min.	114g
PT max.	0.4 mm
OT min.	0.13 mm
MD max.	0.05 mm
OP	15.9±0.4 mm



### Z15G1301



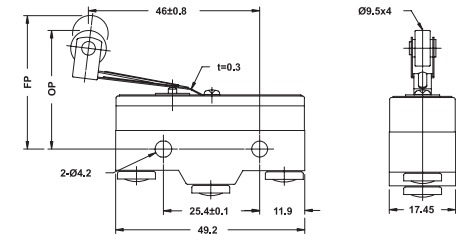
Terminal	Item No.
Solder	Z15G1101
Screw	Z15G1301
OF max.	141g
RF min.	14g
PT max.	4 mm*
OT min.	1.6 mm
MD max.	1.3 mm
FP max.	20.6 mm
OP	17.4±0.8 mm



### Z15G1303



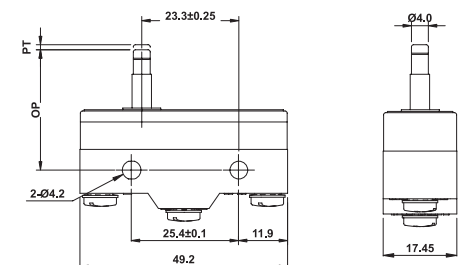
Terminal	Item No.
Solder	Z15G1103
Screw	Z15G1303
OF max.	141g
RF min.	14g
PT max.	4 mm*
OT min.	1.6 mm
MD max.	1.3 mm
FP max.	31.8 mm
OP	28.6±0.8 mm



### Z15G1305



Terminal	Item No.
Solder	Z15G1105
Screw	Z15G1305
OF	250—350g
RF min.	114g
PT max.	0.4 mm
OT min.	1.6 mm
MD max.	0.05 mm
OP	28.2±0.5 mm



# SNAP ACTION SWITCH

## Operating Characteristics

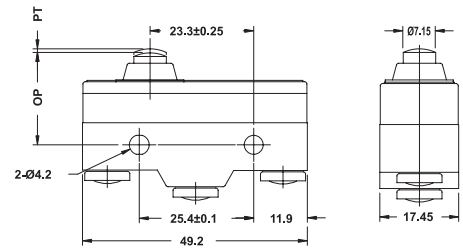
Unit: mm

Item Operating Characteristics Dimensions

### Z15G1306



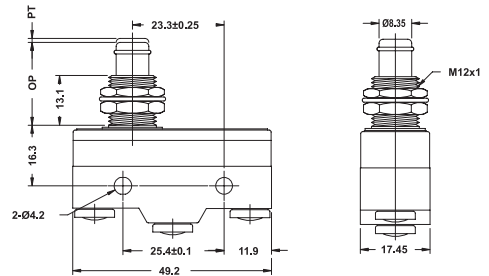
Terminal	Item No.
Solder	Z15G1106
Screw	Z15G1306
OF	250—350g
RF min.	114g
PT max.	0.4 mm
OT min.	1.6 mm
MD max.	0.05 mm
OP	21.5 ± 0.5 mm



### Z15G1307



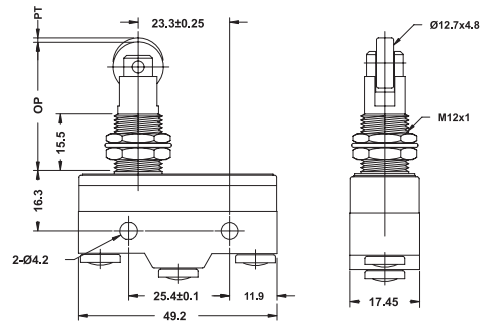
Terminal	Item No.
Solder	Z15G1107
Screw	Z15G1307
OF	250—350g
RF min.	114g
PT max.	0.4 mm
OT min.	5.5 mm
MD max.	0.05 mm
OP	21.8 ± 0.8 mm



### Z15G1308



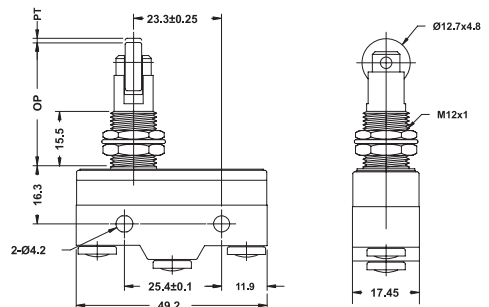
Terminal	Item No.
Solder	Z15G1108
Screw	Z15G1308
OF	250—350g
RF min.	114g
PT max.	0.4 mm
OT min.	3.58 mm
MD max.	0.05 mm
OP	33.4 ± 1.2 mm



### Z15G1318



Terminal	Item No.
Solder	Z15G1118
Screw	Z15G1318
OF	250—350g
RF min.	114g
PT max.	0.4 mm
OT min.	3.58 mm
MD max.	0.05 mm
OP	33.4 ± 1.2 mm



# SNAP ACTION SWITCH

## Operating Characteristics

Unit: mm

Item

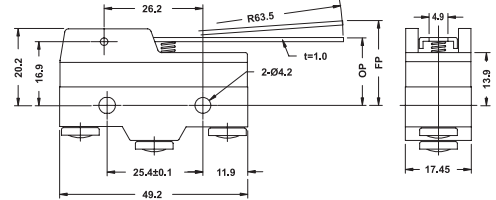
Operating Characteristics

Dimensions

### Z15G1701



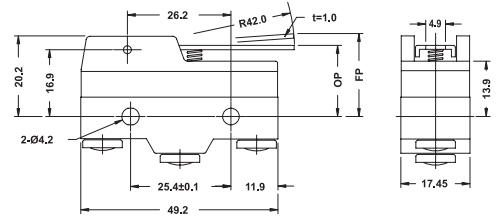
Terminal	Item No.
Solder	Z15G1501
Screw	Z15G1701
OF max.	70g
RF min.	14g
PT max.	10 mm*
OT min.	5.6 mm
MD max.	1.27 mm
FP max.	28.2 mm
OP	19±0.8 mm



### Z15G1702



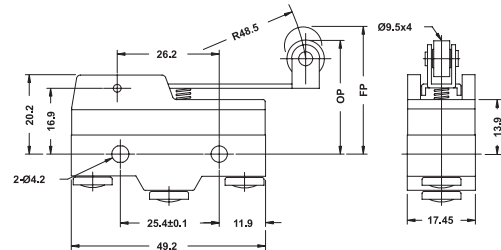
Terminal	Item No.
Solder	Z15G1502
Screw	Z15G1702
OF max.	90g
RF min.	18g
PT max.	7 mm
OT min.	3.5 mm
MD max.	1 mm
FP max.	26.2 mm
OP	19.8±0.8 mm



### Z15G1703



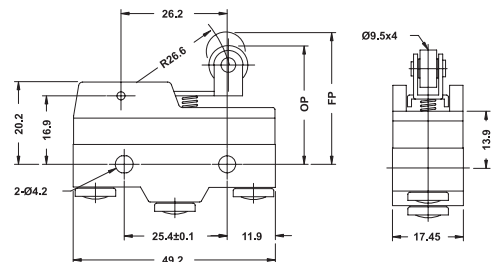
Terminal	Item No.
Solder	Z15G1503
Screw	Z15G1703
OF max.	100g
RF min.	22g
PT max.	7.1 mm
OT min.	4 mm
MD max.	1.02 mm
FP max.	36.5 mm
OP	30.2±0.8mm



### Z15G1704



Terminal	Item No.
Solder	Z15G1504
Screw	Z15G1704
OF max.	160g
RF min.	42g
PT max.	2.7 mm
OT min.	2.4 mm
MD max.	0.5 mm
FP max.	32.5 mm
OP	30.2±0.4mm



# SNAP ACTION SWITCH

## Operating Characteristics

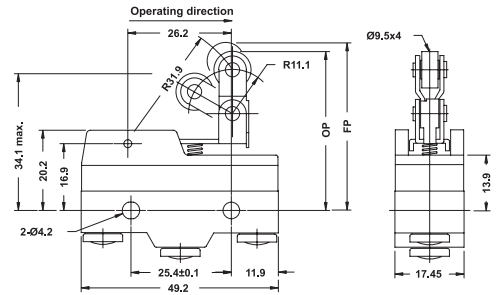
Unit: mm

Item Operating Characteristics Dimensions

### Z15G1744



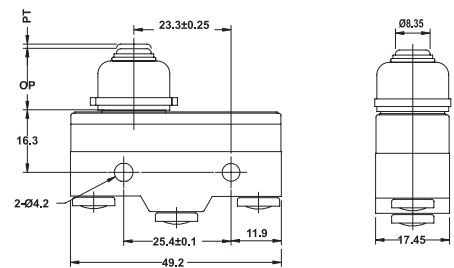
Terminal	Item No.
Solder	Z15G1544
Screw	Z15G1744
OF max.	170g
RF min.	42g
PT max.	2.7 mm*
OT min.	2.4 mm
MD max.	0.51 mm
FP max.	43.6 mm
OP	41.3±0.8 mm



### ZP15G1306



Terminal	Item No.
Solder	ZP15G1106
Screw	ZP15G1306
OF max.	540g
RF min.	114g
PT max.	2.3 mm
OT min.	1.6 mm
MD max.	0.06 mm
OP	28.2±0.5 mm



## TERMINAL ENCLOSURES AA8000

