

VIKING

TECHNICAL Practice

TELECOM SOLUTIONS FOR THE 21ST CENTURY

LPL-1

**Line Powered Off Hook,
Ring and Message
Waiting Indicator**

December 28, 2012

Provide Line Powered Visual “Ring”, “Off Hook” and Message Waiting Indication



The Viking model **LPL-1** connects to any standard analog phone line or phone system's analog station port* to provide visual “Ring” Indication, “On The Phone” indication and “Message Waiting**” indication. The **LPL-1** won't have you guessing which phone is ringing in busy offices. The large flashing LED can be seen up to 100 feet away. When used with a headset on an analog phone, you can end those nagging interruptions that occur when associates don't realize you are on the phone because you are using a headset. The **LPL-1** will light steady indicating to everyone that you are on the phone, flash during ringing or fast flash to indicate message waiting**.

*Caution: The **LPL-1** is not compatible with digital station ports.

**When installed on phone systems with standard 90VDC message waiting voltage.

Important: The **LPL-1** is not designed to recognize stutter dial tone from any analog telephone company line or PABX.

Features

- Displays “Ringing”, “On-The-Phone” or “Message Waiting” on PABX stations with 90V message waiting
- LED visible up to 100 ft (30m)
- Telephone line powered
- Attractive new compact package
- Connects with a modular cord or screw terminals
- Easy to install
- Easy wall mounting with included double-back tape

Phone...715.386.8861

info@vikingelectronics.com

http://www.vikingelectronics.com

Applications

- Hearing impaired locations
- Call centers
- Telemarketing
- Product support groups
- Office cubicles
- Purchasing departments
- Sales offices

Specifications

Input: 80V DC to 150V DC message waiting voltage, minimum 40V AC ring voltage

Viewing Distance: 100 ft typical

Viewing Angle: 180° typical

Visual Indicator: 19mm (0.75”) high intensity red LED

Dimensions: 65mm x 35mm x 20mm (2.56” x 1.38” x .79”)

Shipping Weight: 0.45 kg (1 lbs)

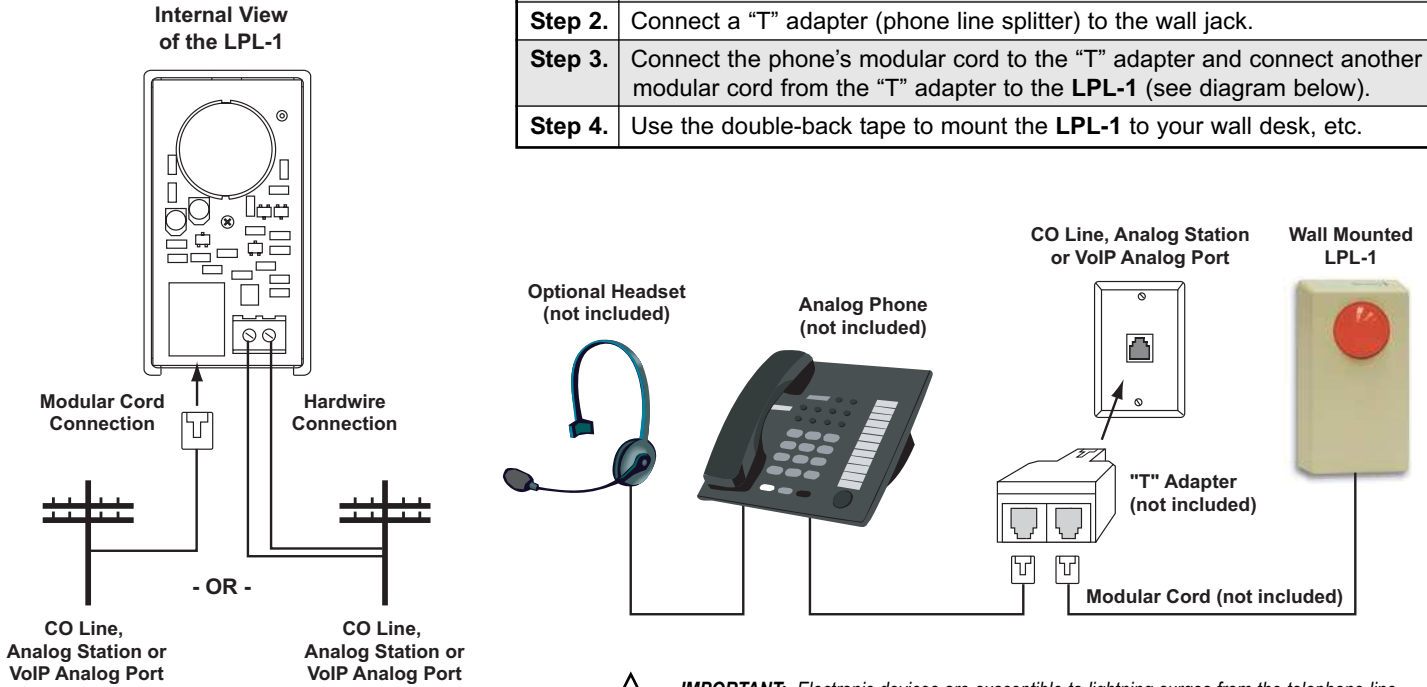
Environmental: 0° C to 32° C (32° F to 90° F) with 5% to 95% non-condensing humidity

Cover Color: Beige

Connections: (1) RJ11 jack, (2) cage clamp terminals

Installation

Step 1.	Disconnect the phone's modular line cord from the wall jack.
Step 2.	Connect a "T" adapter (phone line splitter) to the wall jack.
Step 3.	Connect the phone's modular cord to the "T" adapter and connect another modular cord from the "T" adapter to the LPL-1 (see diagram below).
Step 4.	Use the double-back tape to mount the LPL-1 to your wall desk, etc.



IMPORTANT: Electronic devices are susceptible to lightning surges from the telephone line. It is recommended that a surge protector be installed to protect against such surges.

Warranty

IF YOU HAVE A PROBLEM WITH A VIKING PRODUCT, PLEASE CONTACT: VIKING TECHNICAL SUPPORT AT (715) 386-8666

Our Technical Support Department is available for assistance Monday 8am - 4pm and Tuesday through Friday 8am - 5pm central time. So that we can give you better service, before you call please:

1. Know the model number, the serial number and what software version you have (see serial label).
2. Have your Technical Practice in front of you.
3. It is best if you are on site.

RETURNING PRODUCT FOR REPAIR

The following procedure is for equipment that needs repair:

1. Customer must contact Viking's Technical Support Department at 715-386-8666 to obtain a Return Authorization (RA) number. The customer MUST have a complete description of the problem, with all pertinent information regarding the defect, such as options set, conditions, symptoms, methods to duplicate problem, frequency of failure, etc.
2. Packing: Return equipment in original box or in proper packing so that damage will not occur while in transit. Static sensitive equipment such as a circuit board should be in an anti-static bag, sandwiched between foam and individually boxed. All equipment should be wrapped to avoid packing material lodging in or sticking to the equipment. Include ALL parts of the equipment. C.O.D. or freight collect shipments cannot be accepted. Ship cartons prepaid to: **Viking Electronics, 1531 Industrial Street, Hudson, WI 54016**
3. Return shipping address: Be sure to include your return shipping address inside the box. We cannot ship to a PO Box.
4. RA number on carton: In large printing, write the R.A. number on the outside of each carton being returned.

RETURNING PRODUCT FOR EXCHANGE

The following procedure is for equipment that has failed out-of-box (within 10 days of purchase):

1. Customer MUST contact Viking's Technical Support at 715-386-8666 to determine possible causes for the problem. The customer MUST be able to step through recommended tests for diagnosis.
2. If the Technical Support Product Specialist determines that the equipment is defective based on the customer's input and troubleshooting, a Return Authorization (R.A.) number will be issued. This number is valid for fourteen (14) calendar days from the date of issue.
3. After obtaining the R.A. number, return the approved equipment to your distributor, referencing the R.A. number. Your distributor will then replace the product over the counter at no charge. The distributor will then return the product to Viking using the same R.A. number.
4. **The distributor will NOT exchange this product without first obtaining the R.A. number from you. If you haven't followed the steps listed in 1, 2 and 3, be aware that you will have to pay a restocking charge.**

LIMITED WARRANTY

Viking warrants its products to be free from defects in the workmanship or materials, under normal use and service, for a period of one year from the date of purchase from any authorized Viking distributor or 18 months from the date manufactured, whichever ever is greater. If at any time during the warranty period, the product is deemed defective or malfunctions, return the product to Viking Electronics, Inc., 1531 Industrial Street, Hudson, WI., 54016. Customer must contact Viking's Technical Support Department at 715-386-8666 to obtain a Return Authorization (R.A.) number.

This warranty does not cover any damage to the product due to lightning, over voltage, under voltage, accident, misuse, abuse, negligence or any damage caused by use of the product by the purchaser or others.

NO OTHER WARRANTIES. VIKING MAKES NO WARRANTIES RELATING TO ITS PRODUCTS OTHER THAN AS DESCRIBED ABOVE AND DISCLAIMS ANY EXPRESS OR IMPLIED WARRANTIES OR MERCHANTABILITY OR FITNESS FOR ANY PARTICULAR PURPOSE.

EXCLUSION OF CONSEQUENTIAL DAMAGES. VIKING SHALL NOT, UNDER ANY CIRCUMSTANCES, BE LIABLE TO PURCHASER, OR ANY OTHER PARTY, FOR CONSEQUENTIAL, INCIDENTAL, SPECIAL OR EXEMPLARY DAMAGES ARISING OUT OF OR RELATED TO THE SALE OR USE OF THE PRODUCT SOLD HEREUNDER.

EXCLUSIVE REMEDY AND LIMITATION OF LIABILITY. WHETHER IN AN ACTION BASED ON CONTRACT, TORT (INCLUDING NEGLIGENCE OR STRICT LIABILITY) OR ANY OTHER LEGAL THEORY, ANY LIABILITY OF VIKING SHALL BE LIMITED TO REPAIR OR REPLACEMENT OF THE PRODUCT, OR AT VIKING'S OPTION, REFUND OF THE PURCHASE PRICE AS THE EXCLUSIVE REMEDY AND ANY LIABILITY OF VIKING SHALL BE SO LIMITED.

IT IS EXPRESSLY UNDERSTOOD AND AGREED THAT EACH AND EVERY PROVISION OF THIS AGREEMENT WHICH PROVIDES FOR DISCLAIMER OF WARRANTIES, EXCLUSION OF CONSEQUENTIAL DAMAGES, AND EXCLUSIVE REMEDY AND LIMITATION OF LIABILITY, ARE SEVERABLE FROM ANY OTHER PROVISION AND EACH PROVISION IS A SEPARABLE AND INDEPENDENT ELEMENT OF RISK ALLOCATION AND IS INTENDED TO BE ENFORCED AS SUCH.

Product Support Line...715.386.8666

Fax Back Line...715.386.4345

Due to the dynamic nature of the product design, the information contained in this document is subject to change without notice. Viking Electronics, and its affiliates and/or subsidiaries assume no responsibility for errors and omissions contained in this information. Revisions of this document or new editions of it may be issued to incorporate such changes.