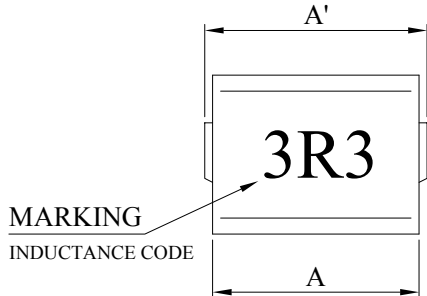


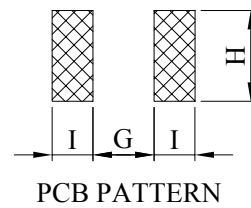
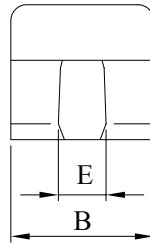
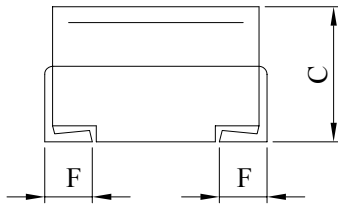
SPECIFICATION FOR APPROVAL

Product Name	MOLDED WIREWOUND CHIP INDUCTOR (LEAD FREE)	Page	1
Tai-Tech Part No.	HWI322522 SERIES		

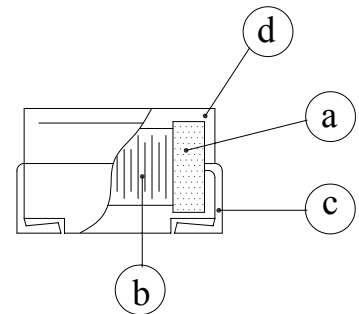
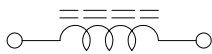
1. CONFIGURATION & DIMENSIONS :



- A : 3.2±0.4 mm
- B : 2.5±0.2 mm
- C : 2.2±0.2 mm
- E : 1.0±0.3 mm
- F : 0.6±0.2 mm
- G : 1.8 REF mm
- H : 1.4 REF mm
- I : 1.0 REF mm



2. SCHEMATIC DIAGRAM :



3. MATERIALS :

NO.	DESCRIPTION	SPECIFICATION	REMARK
a.	CORE	DR FERRITE CORE	
b.	WIRE	ENAMELLED COPPER WIRE	
c.	TERMINAL	TINNED COPPER PLATE	
d.	CAPSULATE	EPOXY NOVOLAC MOLDING COMPOUND	



RoHS Compliant

NOTE : Specifications subject to change without notice. Please check our website for latest information.

24.08.2007



TAI-TECH ADVANCED ELECTRONICS (S) PTE LTD

SPECIFICATION FOR APPROVAL

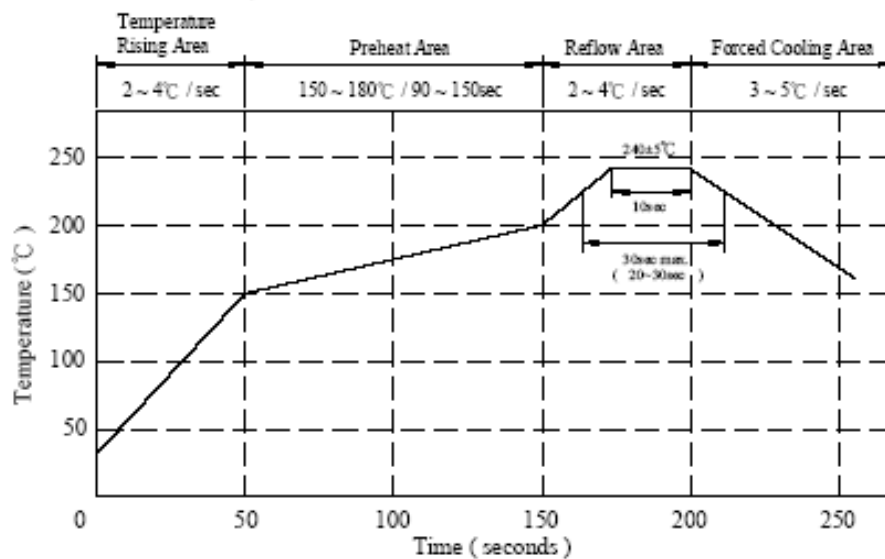
Product Name	MOLDED WIREWOUND CHIP INDUCTOR (LEAD FREE)	Page	2
Tai-Tech Part No.	HWI322522 SERIES		

4. GENERAL SPECIFICATION :

- a) TEMP. RISE : 20°C MAX
- b) AMBIENT TEMP. : 100°C MAX
- c) STORAGE TEMP. : -40°C ----- +125°C
- d) OPERATING TEMP. : -40°C ----- +125°C
- e) TERMINAL STRENGTH : 0.5 KG MIN
- f) RATED CURRENT : CURRENT CAUSE INDUCTANCE DROP WITHIN 10%
- g) RESISTANCE TO SOLDER HEAT : 260°C FOR 10 SECS.
- h) RESISTANCE TO SOLVENT : PER MIL-STD-202F

5. CHARACTERISTICS CURVE :

Peak Temp : 245°C max.
 Max time above 225°C : 30sec max.
 Max time above 200°C : 50sec max.



RoHS Compliant

NOTE : Specifications subject to change without notice. Please check our website for latest information.

24.08.2007



TAI-TECH ADVANCED ELECTRONICS (S) PTE LTD

SPECIFICATION FOR APPROVAL

Product Name	MOLDED WIREWOUND CHIP INDUCTOR (LEAD FREE)	Page	3
Tai-Tech Part No.	HWI322522 SERIES		

6. ELECTRICAL CHARACTERISTICS :

PART NO.	INDUCTANCE (μ H)	Q MIN	TEST FREQ (MHz)	SRF (MHz) MIN	RDC (Ohm) MAX	IDC (mA) MAX
HWI322522-1R0□F	1.00	10	7.96	100	0.156	770
HWI322522-1R5□F	1.50	10	7.96	80	0.195	580
HWI322522-2R2□F	2.20	10	7.96	65	0.260	480
HWI322522-3R3□F	3.30	10	7.96	55	0.325	400
HWI322522-4R7□F	4.70	10	7.96	45	0.520	320
HWI322522-6R8□F	6.80	10	7.96	35	0.650	280
HWI322522-100□F	10.00	15	2.52	28	1.105	220
HWI322522-150□F	15.00	15	2.52	25	1.690	180
HWI322522-220□F	22.00	15	2.52	20	2.600	145
HWI322522-330□F	33.00	15	2.52	15	3.640	115
HWI322522-470□F	47.00	20	2.52	13	5.460	105
HWI322522-680□F	68.00	20	2.52	10	8.450	85
HWI322522-820□F	82.00	20	2.52	9	8.710	80
HWI322522-101□F	100.00	20	0.796	8	10.140	75

INDUCTANCE TOLERANCE :

- : J : $\pm 5\%$
- K : $\pm 10\%$
- M : $\pm 20\%$



RoHS Compliant

NOTE : Specifications subject to change without notice. Please check our website for latest information.

24.08.2007



TAI-TECH ADVANCED ELECTRONICS (S) PTE LTD