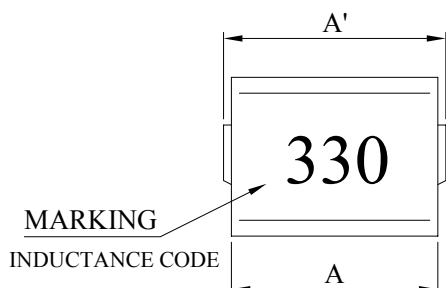


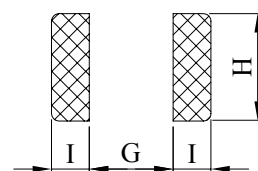
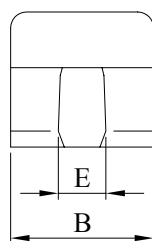
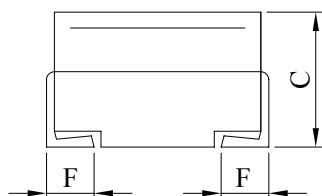
# SPECIFICATION FOR APPROVAL

Product Name	MOLDED WIREWOUND CHIP INDUCTOR (LEAD FREE)	Page	1
Tai-Tech Part No.	WI453232 SERIES		

## 1. CONFIGURATION & DIMENSIONS :

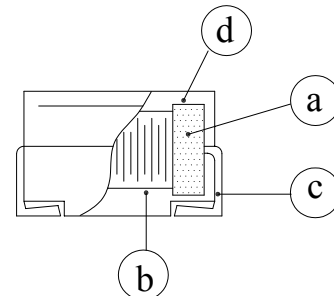


A' :	4.5±0.3	mm
A :	4.2±0.2	mm
B :	3.2±0.2	mm
C :	3.2±0.2	mm
E :	1.2±0.2	mm
F :	1.0±0.2	mm
G :	2.2 REF	mm
H :	1.6 REF	mm
I :	1.5 REF	mm



PCB PATTERN

## 2. SCHEMATIC DIAGRAM :



## 3. MATERIALS :

NO.	DESCRIPTION	SPECIFICATION	REMARK
a.	CORE	DR FERRITE CORE	
b.	WIRE	ENAMELLED COPPER WIRE	
c.	TERMINAL	TINNED COPPER PLATE	
d.	CAPSULATE	EPOXY NOVOLAC MOLDING COMPOUND	



**RoHS Compliant**

*NOTE : Specifications subject to change without notice. Please check our website for latest information.*

23.08.2007



**TAI-TECH ADVANCED ELECTRONICS (S) PTE LTD**

# SPECIFICATION FOR APPROVAL

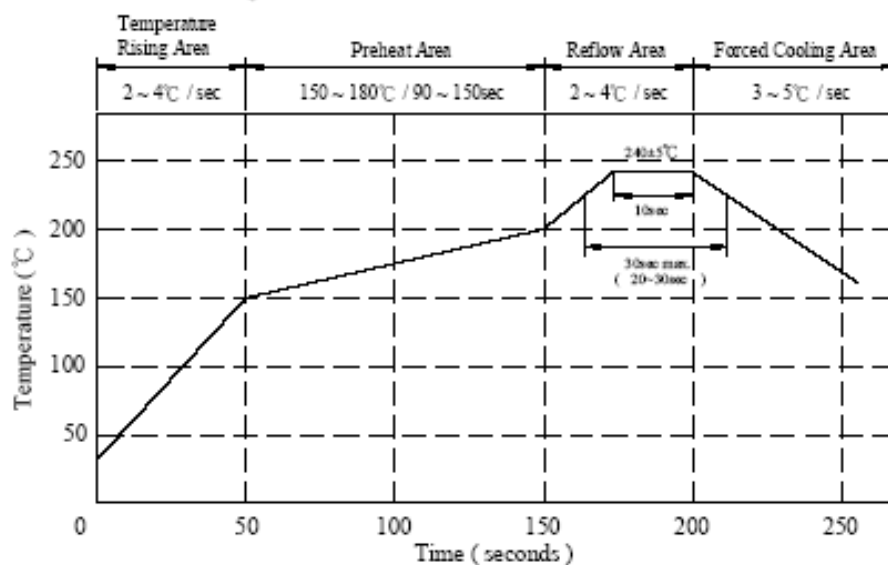
Product Name	MOLDED WIREWOUND CHIP INDUCTOR (LEAD FREE)	Page	2
Tai-Tech Part No.	WI453232 SERIES		

## 4. GENERAL SPECIFICATION :

- a) TEMP. RISE : 20°C MAX
- b) AMBIENT TEMP. : 100°C MAX
- c) STORAGE TEMP. : -40°C ----- +125°C
- d) OPERATING TEMP. : -40°C ----- +125°C
- e) TERMINAL STRENGTH : 0.5 KG MIN
- f) RATED CURRENT : CURRENT CAUSE INDUCTANCE DROP WITHIN 10%
- g) RESISTANCE TO SOLDER HEAT : 260°C FOR 10 SECS.
- h) RESISTANCE TO SOLVENT : PER MIL-STD-202F

## 5. CHARACTERISTICS CURVE :

Peak Temp : 245°C max.  
 Max time above 225°C : 30sec max.  
 Max time above 200°C : 50sec max.



**RoHS Compliant**

NOTE : Specifications subject to change without notice. Please check our website for latest information.

23.08.2007



**TAI-TECH ADVANCED ELECTRONICS (S) PTE LTD**

# SPECIFICATION FOR APPROVAL

Product Name	MOLDED WIREWOUND CHIP INDUCTOR (LEAD FREE)	Page	3
Tai-Tech Part No.	WI453232 SERIES		

## 6. ELECTRICAL CHARACTERISTICS :

PART NO.	INDUCTANCE ( $\mu$ H)	Q MIN.	TEST FREQ. (MHz)	SRF (MHz) MIN	RDC (Ohm) MAX	IDC (mA) MAX
WI453232-R10□F	0.10	35	25.2	300	0.18	800
WI453232-R12□F	0.12	35	25.2	280	0.20	770
WI453232-R15□F	0.15	35	25.2	250	0.22	730
WI453232-R18□F	0.18	35	25.2	220	0.24	700
WI453232-R22□F	0.22	40	25.2	200	0.25	665
WI453232-R27□F	0.27	40	25.2	180	0.26	635
WI453232-R33□F	0.33	40	25.2	165	0.28	605
WI453232-R39□F	0.39	40	25.2	150	0.30	575
WI453232-R47□F	0.47	40	25.2	145	0.32	545
WI453232-R56□F	0.56	40	25.2	140	0.36	520
WI453232-R68□F	0.68	40	25.2	135	0.40	500
WI453232-R82□F	0.82	40	25.2	130	0.45	475
WI453232-1R0□F	1.00	50	7.96	100	0.50	450
WI453232-1R2□F	1.20	50	7.96	80	0.55	430
WI453232-1R5□F	1.50	50	7.96	70	0.60	410
WI453232-1R8□F	1.80	50	7.96	60	0.65	390
WI453232-2R2□F	2.20	50	7.96	55	0.70	380
WI453232-2R7□F	2.70	50	7.96	50	0.75	370
WI453232-3R3□F	3.30	50	7.96	45	0.80	355
WI453232-3R9□F	3.90	50	7.96	40	0.90	330
WI453232-4R7□F	4.70	50	7.96	35	1.00	315
WI453232-5R6□F	5.60	50	7.96	33	1.10	300
WI453232-6R8□F	6.80	50	7.96	27	1.20	285
WI453232-8R2□F	8.20	50	7.96	25	1.40	270
WI453232-100□F	10.00	50	2.52	20	1.60	250
WI453232-120□F	12.00	50	2.52	18	2.00	225
WI453232-150□F	15.00	50	2.52	17	2.50	200
WI453232-180□F	18.00	50	2.52	15	2.80	190
WI453232-220□F	22.00	50	2.52	13	3.20	180
WI453232-270□F	27.00	50	2.52	12	3.60	170
WI453232-330□F	33.00	50	2.52	11	4.00	160
WI453232-390□F	39.00	50	2.52	10	4.50	150
WI453232-470□F	47.00	50	2.52	10	5.00	140
WI453232-560□F	56.00	50	2.52	9.0	5.50	135
WI453232-680□F	68.00	50	2.52	9.0	6.00	130
WI453232-820□F	82.00	50	2.52	8.0	7.00	120
WI453232-101□F	100.00	40	0.796	8.0	8.00	110
WI453232-121□F	120.00	40	0.796	6.0	8.00	110
WI453232-151□F	150.00	40	0.796	5.0	9.00	105
WI453232-181□F	180.00	40	0.796	5.0	9.50	102
WI453232-221□F	220.00	40	0.796	4.0	10.00	100
WI453232-271□F	270.00	40	0.796	4.0	12.00	92
WI453232-331□F	330.00	40	0.796	3.5	14.00	85
WI453232-391□F	390.00	40	0.796	3.0	18.00	80
WI453232-471□F	470.00	40	0.796	3.0	26.00	62
WI453232-561□F	560.00	30	0.796	3.0	30.00	50
WI453232-681□F	680.00	30	0.796	3.0	30.00	50
WI453232-821□F	820.00	30	0.796	2.5	35.00	30
WI453232-102□F	1000.00	20	0.252	2.5	40.00	30

INDUCTANCE TOLERANCE :

- : J :  $\pm$ 5%
- K :  $\pm$ 10%
- M :  $\pm$ 20%



**RoHS Compliant**

NOTE : Specifications subject to change without notice. Please check our website for latest information.

23.08.2007



TAI-TECH ADVANCED ELECTRONICS (S) PTE LTD