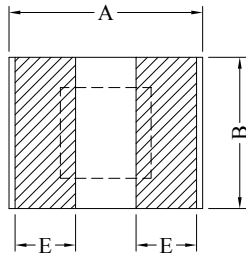


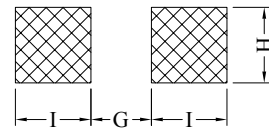
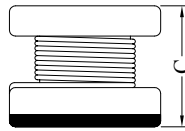
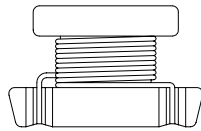
SPECIFICATION FOR APPROVAL

Product Name	WIREWOUND CHIP INDUCTOR (STANDARD TYPE) (LEAD FREE)	Page	1
Tai-tech Part No.	SDI3225 Series	Rev. No.	0

1. CONFIGURATION & DIMENSIONS :

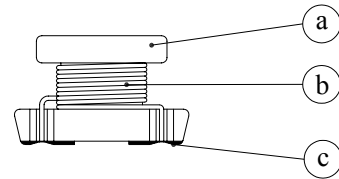
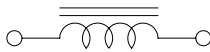


A	: 3.20± 0.30	m/m
B	: 2.50± 0.30	m/m
C	: 2.20± 0.30	m/m
E	: 1.15± 0.20	m/m
G	: 1.00 REF	m/m
H	: 2.50 REF	m/m
I	: 1.10 REF	m/m



PCB PATTERN

2. SCHEMATIC :



3. MATERIALS :

NO.	DESCRIPTION	SPECIFICATION	REMARK
a.	CORE	DR FERRITE CORE	
b.	WIRE	ENAMELLED COPPER WIRE	
c.	TERMINAL	Ag + Cu + Ni + Sn	

4. GENERAL SPECIFICATIONS :

- a. STORAGE TEMPERATURE : -40° C ---- +125° C
- b. OPERATING TEMPERATURE : -40° C ---- +85° C
- c. TEMPERATURE RISE : 40° C MAX AT RATED CURRENT
- d. RATED CURRENT : BASED ON TEMP RISE $\Delta L/L_0A=10\%$ MAX
- e. RESISTANCE TO SOLDER HEAT : 260° C. 10 SEC



RoHS Compliant



SPECIFICATION FOR APPROVAL

Product Name	WIREWOUND CHIP INDUCTOR (STANDARD TYPE) (LEAD FREE)	Page	2
Tai-tech Part No.	SDI3225 Series	Rev. No.	0

5. ELECTRICAL CHARACTERISTICS :

Part No.	Inductance (μ H)	Test Frequency (Hz)	Q min.	Test Frequency (Hz)	SRF (MHz) min.	DCR (Ohm) max.	IDC (mA) max.
SDI3225-1R0MF	1.0 \pm 20%	1M	20	1M	100	0.50	445
SDI3225-1R2MF	1.2 \pm 20%	1M	20	1M	100	0.60	425
SDI3225-1R5KF	1.5 \pm 10%	1M	20	1M	75	0.60	400
SDI3225-1R8KF	1.8 \pm 10%	1M	20	1M	60	0.70	390
SDI3225-2R2KF	2.2 \pm 10%	1M	20	1M	50	0.80	370
SDI3225-2R7KF	2.7 \pm 10%	1M	20	1M	43	0.90	320
SDI3225-3R3KF	3.3 \pm 10%	1M	20	1M	38	1.00	300
SDI3225-3R9KF	3.9 \pm 10%	1M	20	1M	35	1.10	290
SDI3225-4R7KF	4.7 \pm 10%	1M	20	1M	31	1.20	270
SDI3225-5R6KF	5.6 \pm 10%	1M	20	1M	28	1.30	250
SDI3225-6R8KF	6.8 \pm 10%	1M	20	1M	25	1.50	240
SDI3225-8R2KF	8.2 \pm 10%	1M	20	1M	23	1.60	225
SDI3225-100KF	10 \pm 10%	1M	35	1M	20	1.80	190
SDI3225-120KF	12 \pm 10%	1M	35	1M	18	2.00	180
SDI3225-150KF	15 \pm 10%	1M	35	1M	16	2.20	170
SDI3225-180KF	18 \pm 10%	1M	35	1M	15	2.50	165
SDI3225-220KF	22 \pm 10%	1M	35	1M	14	2.80	150
SDI3225-270KF	27 \pm 10%	1M	40	1M	13	3.10	125
SDI3225-330KF	33 \pm 10%	1M	40	1M	12	3.50	115
SDI3225-390KF	39 \pm 10%	1M	40	1M	11	3.90	110
SDI3225-470KF	47 \pm 10%	1M	40	1M	11	4.30	100
SDI3225-560KF	56 \pm 10%	1M	40	1M	10	4.90	85
SDI3225-680KF	68 \pm 10%	1M	40	1M	9.0	5.50	80
SDI3225-820KF	82 \pm 10%	1M	40	1M	8.5	6.20	70



RoHS Compliant



SPECIFICATION FOR APPROVAL

Product Name	WIREWOUND CHIP INDUCTOR (STANDARD TYPE) (LEAD FREE)	Page	3
Tai-tech Part No.	SDI3225 Series	Rev. No.	0

5. ELECTRICAL CHARACTERISTICS :

Part No.	Inductance (μ H)	Test Frequency (Hz)	Q min.	Test Frequency (Hz)	SRF (MHz) min.	DCR (Ohm) max.	IDC (mA) max.
SDI3225-101KF	100 \pm 10%	1M	40	0.76M	8.0	7.00	80
SDI3225-121KF	120 \pm 10%	1M	40	0.76M	7.5	8.00	75
SDI3225-151KF	150 \pm 10%	1M	40	0.76M	7.0	9.30	70
SDI3225-181KF	180 \pm 10%	1M	40	0.76M	6.0	10.20	65
SDI3225-221KF	220 \pm 10%	1M	40	0.76M	5.5	11.80	65
SDI3225-271KF	270 \pm 10%	1M	40	0.76M	5.0	12.50	65
SDI3225-331KF	330 \pm 10%	1M	40	0.76M	5.0	13.00	65
SDI3225-391KF	390 \pm 10%	1M	50	0.76M	5.0	22.00	50
SDI3225-471KF	470 \pm 10%	1K	50	0.76M	5.0	25.00	45
SDI3225-561KF	560 \pm 10%	1K	50	0.76M	5.0	28.00	40



RoHS Compliant

