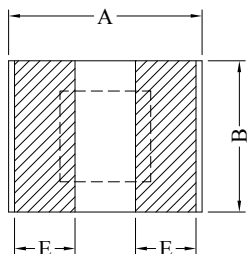


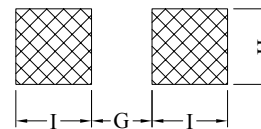
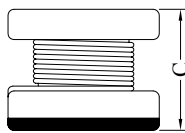
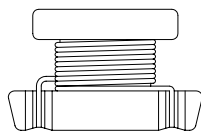
SPECIFICATION FOR APPROVAL

Product Name	WIREWOUND CHIP INDUCTOR (STANDARD TYPE) (LEAD FREE)	Page	1
Tai-tech Part No.	SDI4532 Series	Rev. No.	0

1. CONFIGURATION & DIMENSIONS :

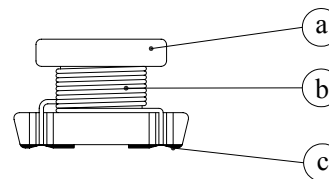
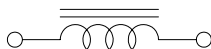


A	: 4.50± 0.30	m/m
B	: 3.20± 0.30	m/m
C	: 2.60± 0.30	m/m
E	: 1.75 MIN	m/m
G	: 1.50 REF	m/m
H	: 3.20 REF	m/m
I	: 1.50 REF	m/m



PCB PATTERN

2. SCHEMATIC :



3. MATERIALS :

NO.	DESCRIPTION	SPECIFICATION	REMARK
a.	CORE	DR FERRITE CORE	
b.	WIRE	ENAMELLED COPPER WIRE	
c.	TERMINAL	Ag + Cu + Ni + Sn	

4. GENERAL SPECIFICATIONS :

- a. STORAGE TEMPERATURE : -40° C ---- +125° C
- b. OPERATING TEMPERATURE : -40° C ---- +85° C
- c. TEMPERATURE RISE : 40° C MAX AT RATED CURRENT
- d. RATED CURRENT : BASED ON TEMP RISE $\Delta L/L0A=10\%$ MAX
- e. RESISTANCE TO SOLDER HEAT : 260° C. 10 SEC



RoHS Compliant



SPECIFICATION FOR APPROVAL

Product Name	WIREWOUND CHIP INDUCTOR (STANDARD TYPE) (LEAD FREE)	Page	2
Tai-tech Part No.	SDI4532 Series	Rev. No.	0

5. ELECTRICAL CHARACTERISTICS :

Part No.	Inductance (μ H)	Test Frequency (Hz)	Q min.	Test Frequency (Hz)	SRF (MHz) min.	DCR (Ohm) max.	IDC (mA) max.
SDI4532-1R0MF	1.0 \pm 20%	1M	20	1M	120	0.20	500
SDI4532-1R2MF	1.2 \pm 20%	1M	20	1M	100	0.20	500
SDI4532-1R5MF	1.5 \pm 20%	1M	20	1M	85	0.30	500
SDI4532-1R8MF	1.8 \pm 20%	1M	20	1M	75	0.30	500
SDI4532-2R2MF	2.2 \pm 20%	1M	20	1M	62	0.30	500
SDI4532-2R7MF	2.7 \pm 20%	1M	20	1M	53	0.32	500
SDI4532-3R3MF	3.3 \pm 20%	1M	20	1M	47	0.35	500
SDI4532-3R9MF	3.9 \pm 20%	1M	20	1M	41	0.38	500
SDI4532-4R7KF	4.7 \pm 10%	1M	30	1M	38	0.40	500
SDI4532-5R6KF	5.6 \pm 10%	1M	30	1M	33	0.47	500
SDI4532-6R8KF	6.8 \pm 10%	1M	30	1M	31	0.50	450
SDI4532-8R2KF	8.2 \pm 10%	1M	30	1M	27	0.56	450
SDI4532-100KF	10 \pm 10%	1M	35	1M	23	0.56	400
SDI4532-120KF	12 \pm 10%	1M	35	1M	21	0.62	380
SDI4532-150KF	15 \pm 10%	1M	35	1M	19	0.73	360
SDI4532-180KF	18 \pm 10%	1M	35	1M	17	0.82	340
SDI4532-220KF	22 \pm 10%	1M	35	1M	15	0.94	320
SDI4532-270KF	27 \pm 10%	1M	35	1M	14	1.10	300
SDI4532-330KF	33 \pm 10%	1M	35	1M	12	1.20	270
SDI4532-390KF	39 \pm 10%	1M	35	1M	11	1.40	240
SDI4532-470KF	47 \pm 10%	1M	35	1M	10	1.50	220
SDI4532-560KF	56 \pm 10%	1M	35	1M	9.3	1.70	200
SDI4532-680KF	68 \pm 10%	1M	35	1M	8.4	1.90	180
SDI4532-820KF	82 \pm 10%	1M	35	1M	7.5	2.20	170



RoHS Compliant



SPECIFICATION FOR APPROVAL

Product Name	WIREWOUND CHIP INDUCTOR (STANDARD TYPE) (LEAD FREE)	Page	3
Tai-tech Part No.	SDI4532 Series	Rev. No.	0

5. ELECTRICAL CHARACTERISTICS :

Part No.	Inductance (μ H)	Test Frequency (Hz)	Q min.	Test Frequency (Hz)	SRF (MHz) min.	DCR (Ohm) max.	IDC (mA) max.
SDI4532-101KF	100 \pm 10%	1M	40	0.796M	6.8	2.50	160
SDI4532-121KF	120 \pm 10%	1M	40	0.796M	6.2	3.00	150
SDI4532-151KF	150 \pm 10%	1M	40	0.796M	5.5	3.70	130
SDI4532-181KF	180 \pm 10%	1M	40	0.796M	5.0	4.50	120
SDI4532-221KF	220 \pm 10%	1M	40	0.796M	4.5	5.40	110
SDI4532-271KF	270 \pm 10%	1M	40	0.796M	4.0	6.80	100
SDI4532-331KF	330 \pm 10%	1M	40	0.796M	3.6	8.20	95
SDI4532-391KF	390 \pm 10%	1M	40	0.796M	3.3	9.70	90
SDI4532-471KF	470 \pm 10%	1K	40	0.796M	3.0	11.8	80
SDI4532-561KF	560 \pm 10%	1K	40	0.796M	2.7	14.5	70
SDI4532-681KF	680 \pm 10%	1K	40	0.796M	2.5	17.0	65
SDI4532-821KF	820 \pm 10%	1K	40	0.796M	2.2	20.5	60
SDI4532-102KF	1000 \pm 10%	1K	40	0.252M	2.0	25.0	50
SDI4532-122KF	1200 \pm 10%	1K	40	0.252M	1.8	30.0	45
SDI4532-152KF	1500 \pm 10%	1K	40	0.252M	1.6	37.0	40
SDI4532-182KF	1800 \pm 10%	1K	40	0.252M	1.5	45.0	35
SDI4532-222KF	2200 \pm 10%	1K	40	0.252M	1.3	50.0	30



RoHS Compliant

