

# SERIES HC26

# Dynapar™ brand

## Integral Coupling Encoder

### Key Features

- High 5000PPR Resolution Available
- Integral Coupling and Flange Provide Thermal and Electrical Isolation
- Field Replaceable Coupling



## SPECIFICATIONS

### STANDARD OPERATING CHARACTERISTICS

**Code:** Incremental

**Resolution:** 3000 to 5000 PPR (pulses/revolution)

**Accuracy:** (worst case any edge to any other edge)  $\pm 10.8^\circ$ /PPR

**Format:** Two channel quadrature (AB) with optional Index (Z) and complementary outputs

**Phase Sense:** A leads B for CW or CCW shaft rotation as viewed from the shaft end of the encoder; see Ordering Information

**Quadrature Phasing:**  $90^\circ \pm 25^\circ$  electrical

**Symmetry:**  $180^\circ \pm 25^\circ$  electrical

**Index:**  $90^\circ \pm 25^\circ$  electrical (gated with B low)

**Waveforms:** Squarewave with rise and fall times less than 1 microsecond into a load capacitance of 1000 pf

### ELECTRICAL

**Input Power:**

4.5 min. to 26 VDC max. at 80 mA max., not including output loads

**Outputs:**

7273 Open Collector: 30 VDC max., 40 mA sink max.

7272 Push-Pull and Differential Line Driver: 40 mA sink or source

**Frequency Response:** 250 kHz min.

**Electrical Protection:** Overvoltage, reverse voltage and output short circuit protected

**Noise Immunity:** Tested to EN61326 (Industrial) for Electro Static Discharge, Radio Frequency Interference, Electrical Fast Transients, Conducted and Magnetic Interference

**Mating Connector:**

7 pin, style MS3106A-16S-1S (MCN-N5);

10 pin, style MS3106A-18-1S (MCN-N6)

5 pin, style M12: Cable with connector available

8 pin, style M12: Cable with connector available

### MECHANICAL

**Shafts coupling:** accepts 1/4", 3/8" and 1/2" motor or machinery shafts

**Shafts alignment:** 0.002" max. TIR runout; 0.005" max. radial offset; 3° max. angular

**Shaft Speed:** 10,000 RPM max.

**Starting Torque:** (max at 25 °C) 1.0 oz-in

**Moment of Inertia:**  $4.3 \times 10^{-4}$  oz-in-sec<sup>2</sup>

### ENVIRONMENTAL

**Operating Temperature:**

Standard: 0 to +70 °C;

Extended: -40 to +85 °C

**Storage Temperature:** -40 to +90 °C

**Shock:** 50 G's for 11 milliseconds duration

**Vibration:** 5 to 2000 Hz at 20 G's

**Humidity:** to 98% without condensation

**Enclosure Rating:** NEMA12/IP54 (dirt tight, splashproof)

**Ordering Information**

To order, complete the model number with code numbers from the table below:

Code 1: Model	Code 2: PPR	Code 3: Mechanical	Code 4: Output	Code 5: Electrical	Code 6: Termination	Code 7: Options
<b>HC526</b>	<input type="checkbox"/> <input type="checkbox"/> <input type="checkbox"/> <input type="checkbox"/>	<input type="checkbox"/>	<input type="checkbox"/>	<input type="checkbox"/>	<input type="checkbox"/>	<input type="checkbox"/> <input type="checkbox"/>

Ordering Information						
<b>HC526</b> Size 25 Enclosed with Integral Coupling and Flange Adapter	<b>3000</b> 3,000 <b>3600</b> 3,600 <b>4096</b> 4,096 <b>5000</b> 5,000	<b>A</b> Flange Adapter with Pilot <b>B</b> Flange Adapter without Pilot <b>C</b> Flange Adapter for NEMA Size 42 Motors	<b>7 Pin Connector or Cable</b> <b>0</b> Single Ended, no Index, Format A, Table 1 <b>1</b> Single Ended, with Index, Format A, Table 1 <b>4</b> Single Ended, with Index, Format B, Table 1 <b>A</b> Single Ended, with Index, Format C, Table 1 <b>C</b> Single Ended, no Index, Format C, Table 1 <b>G</b> Single Ended, with Index, Format D, Table 1	<b>0</b> 5-26V in; 5-26V Open Collector with 2.2kΩ Pullup out <b>1</b> 5-26V in; 5-26V Open Collector out <b>2</b> 5-26V in; 5V Totem Pole out <b>3</b> 5-26V in; 5V Differential Line Driver out (7272) <b>4</b> 5-26V in; 5-26V Differential Line Driver out (7272)	<b>0</b> End Mount Connector <b>1</b> Side Mount Connector <b>2</b> 18" Cable, Side <b>3</b> 3' Cable, Side <b>4</b> 6' Cable, Side <b>5</b> 10' Cable, Side <b>6</b> 15' Cable, Side	available when Code 4 is 0 thru G, and Code 6 is 0 or 1:  <b>PS</b> LED Output Indicator
			<b>10 Pin Connector or Cable</b> <b>2</b> Differential, no Index, Format A, Table 2 <b>3</b> Differential, with Index, Format A, Table 2 <b>5</b> Differential, with Index, Format B, Table 2 <b>B</b> Differential, with Index Format C, Table 2 <b>D</b> Differential, no Index, Format C, Table 2			
			<b>5 Pin M12 Connector</b> <b>H</b> Single ended, no index, Format A, Table 4 <b>J</b> Single ended, with index, Format A, Table 4 <b>K</b> Single ended, with index, Format B, Table 4 <b>L</b> Single ended, with index, Format C, Table 4 <b>M</b> Single ended, no index, Format C, Table 4 <b>N</b> Single ended, with index, Format D, Table 4	<b>A</b> Same as "0" with extend. temp range <b>B</b> Same as "1" with extend. temp range <b>C</b> Same as "2" with extend. temp range <b>D</b> Same as "3" with extend. temp range <b>E</b> Same as "4" with extend. temp range		
			<b>8 Pin M12 Connector</b> <b>P</b> Single ended, no index, Format A, Table 5 <b>Q</b> Single ended, with index, Format A, Table 5 <b>R</b> Single ended, with index, Format B, Table 5 <b>S</b> Single ended, with index, Format C, Table 5 <b>T</b> Single ended, no index, Format C, Table 5 <b>U</b> Single ended, with index, Format D, Table 5 <b>V</b> Differential, no index, Format A, Table 6 <b>W</b> Differential, with index, Format A, Table 6 <b>X</b> Differential, with index, Format B, Table 6 <b>Y</b> Differential, with index, Format C, Table 6 <b>Z</b> Differential, no index, Format C, Table 6			
CPLX1250375 Flexible Coupling 3/8" to 1/4", 3/8" or 1/2"						

**10 foot Cable Assemblies with MS Connector**

- 1400431-0010** 7 Pin MS, Cable Assy. For Use with Single Ended w/Index Outputs
- 1400635-0010** 10 Pin MS, Cable Assy. For Use with Differential Line Driver with Index Outputs

**15 foot Cable Assemblies with M12 Connector**

- 112859-0015** 5 Pin M12, Cable Assy. For Use with Single Ended Outputs
- 112860-0015** 8 Pin M12, Cable Assy. For Use with Single Ended Outputs
- 112860-0015** 8 Pin M12, Cable Assy. For Use with Differential Line Driver Outputs

**Mating Connectors (no cable)**

- 7 pin, style MS3106A-16S-1S (MCN-N5)
- 10 pin, style MS3106A-18-1S (MCN-N6)

# SERIES HC26



## ELECTRICAL CONNECTIONS

### Prewired Cable or Accessory Cables with 7 or 10 Pin MS Connector - when Code 4= 0 to 5, or A, B, C, D or G

Note: Wire color codes are referenced here for models that are specified with pre-wired cable. Connector/cables are described in the Encoder Accessories section of this catalog and color-coding information is provided here for reference.

Table 1 – Single Ended			
Pin	Function (If Used)	Wire Color Code	Cable* Accessory Color Code
A	Signal A	BRN	RED
B	Signal B	ORN	BLUE
C	Signal Z	YEL	YEL
D	Power Source	RED	WHT
E	No Connection	—	GRN
F	Common	BLK	BLK
G	Case	GRN	SHIELD

\*Cable Accessory: P/N 14004310010

Table 2 – Differential			
Pin	Function (If Used)	Wire Color Code	Cable* Accessory Color Code
A	Signal A	BRN	BRN
B	Signal B	ORN	ORN
C	Signal Z	YEL	YEL
D	Power Source	RED	RED
E	No Connection	—	—
F	Common	BLK	BLK
G	Case	GRN	GRN
H	Signal $\bar{A}$	BRN/WH	BRN/WH
I	Signal $\bar{B}$	ORN/WH	ORN/WH
J	Signal $\bar{Z}$	YEL/WH	YEL/WH

\*Cable Accessory: P/N 14006350010

**Cable Configuration:** PVC jacket, 105 °C rated, overall foil shield; 3 twisted pairs 26 AWG (output signals), plus 2 twisted pairs 24 AWG (input power)

Connector pin numbers and cable assembly wire color information is provided here for reference.

Encoder Function	Table 4 5 Pin Single Ended		Table 5 8 Pin Single Ended		Table 6 8 Pin Differential	
	Pin	Wire Color	Pin	Wire Color	Pin	Wire Color
Sig. A	4	BLK	1	BRN	1	BRN
Sig. B	2	WHT	4	ORG	4	ORG
†Sig. Z	5	GRY	6	YEL	6	YEL
Power +V	1	BRN	2	RED	2	RED
Com	3	BLU	7	BLK	7	BLK
Sig. $\bar{A}$	—	—	—	—	3	BRN/WHT
Sig. $\bar{B}$	—	—	—	—	5	ORG/WHT
†Sig. $\bar{Z}$	—	—	—	—	8	YEL/WHT

**Cable Configuration:** PVC jacket, 105 °C rated, overall foil shield; 24 AWG conductors, minimum

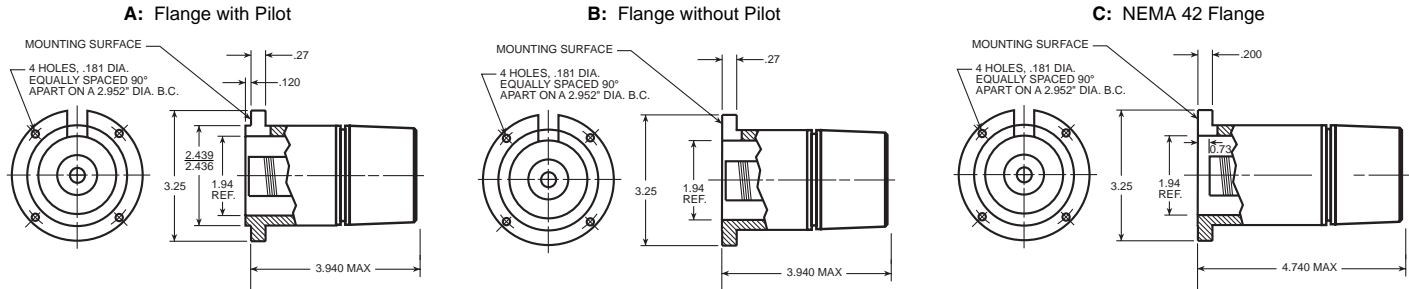
\*Note: Standard cable length is 10 feet but may be ordered in any length in 5 foot increment. For example, -0020 is a 20 foot cable.

†Note: Index not provided on all models. See ordering information

See “Accessories” Section for Connectors and Cable Assemblies Ordering Information

**DIMENSIONS**

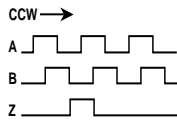
**Code 3: Mechanical**



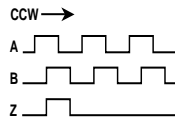
**Mating shaft lengths:** Typically: 0.5" max. available into the coupling as measured from the A/B mounting surface.  
 1.3" max. available into the coupling as measured from the C mounting surface.

**Code 4: Output**

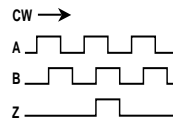
**0 - 3: Format A**



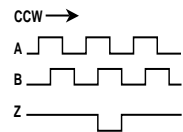
**4 - 5: Format B**



**6 - D: Format C**



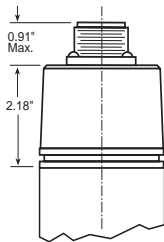
**G: Format D**



**Code 6: Termination**

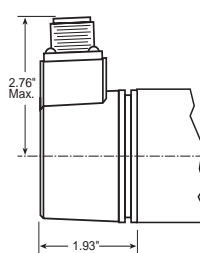
**0: End MS Connector**

When Code 5 is 0 to 5 or A to G

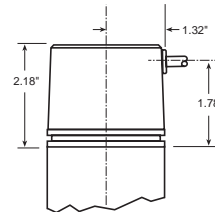


**1: Side MS Connector**

When Code 5 is 0 to 5 or A to G

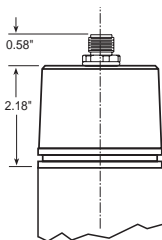


**2 - A: Side Cable**



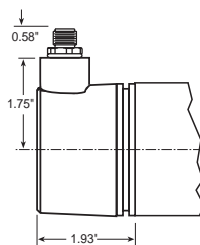
**0: End M12 Connector**

When Code 5 is H to Z



**1: Side M12 Connector**

When Code 5 is H to Z



**Worldwide Brands: NorthStar™ • Acuro™ • Dynapar™ • Hengstler™ • Harowe™**  
 Headquarters: 1675 Delany Road • Gurnee, IL 60031-1282 • USA • Phone: 1.847.662.2666 • Fax: 1.847.662.6633

**Satellite Locations:**

- **North America:** North Carolina, South Carolina, Connecticut, Massachusetts, New York, Canada, British Virgin Islands
- **West Indies:** St. Kitts • **Europe:** United Kingdom, Italy, France, Germany, Spain, Slovakia
- **South America:** Brazil • **Asia:** China, Japan, Korea, Singapore

**Customer Service:**

Tel.: +1.800.873.8731  
 Fax: +1.847.662.4150  
 custserv@dynapar.com

**Technical Support**

Tel.: +1.800.234.8731  
 Fax: +1.847.782.5277  
 dynapar.techsupport@dynapar.com

**European Sales Representative**

Hengstler GmbH  
 Uhlandstrasse 49, 78554 Aldingen  
 Germany  
 www.hengstler.de