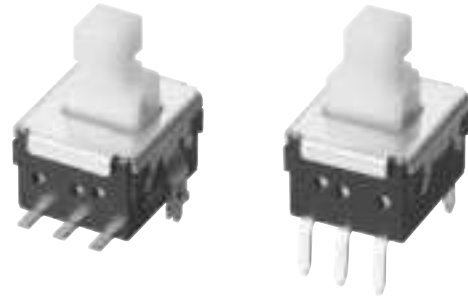


ESB33 Vertical Push Switches

Type: **ESB33 (H=6.0 mm)**

■ Features

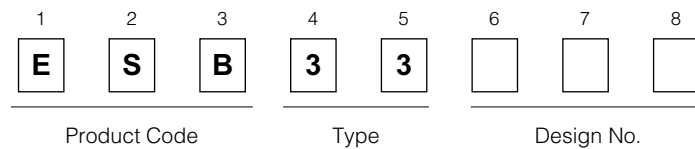
- Low profile (H=6.0 mm)
- 3 N and 5 N operating force availables



■ Recommended Applications

- Operation switches for automobiles (heater control switches etc.)
- Secondary power switches for lower voltage in consumer electronic equipment and different types of mode switches

■ Explanation of Part Numbers



■ Specifications

| | |
|-------------------------------|---|
| Rating | 50 μ A 3 Vdc to 0.2 A 14 Vdc (Resistive load) |
| Travel | Lock travel=1.5 mm Full travel=2.3 mm |
| Mounting Height | 6.0 mm |
| Poles and Throws | 2-poles 2-throws |
| Operating Mode | Self-lock, Non-lock |
| Switching Mode | Non-shorting |
| Minimum Quantity/Packing Unit | 100 pcs. Polyethylene Bag (Bulk) / 300 pcs. Embossed Taping (Reel Pack) |
| Quantity/Carton | 2000 pcs. Polyethylene Bag (Bulk) / 1800 pcs. Embossed Taping (Reel Pack) |

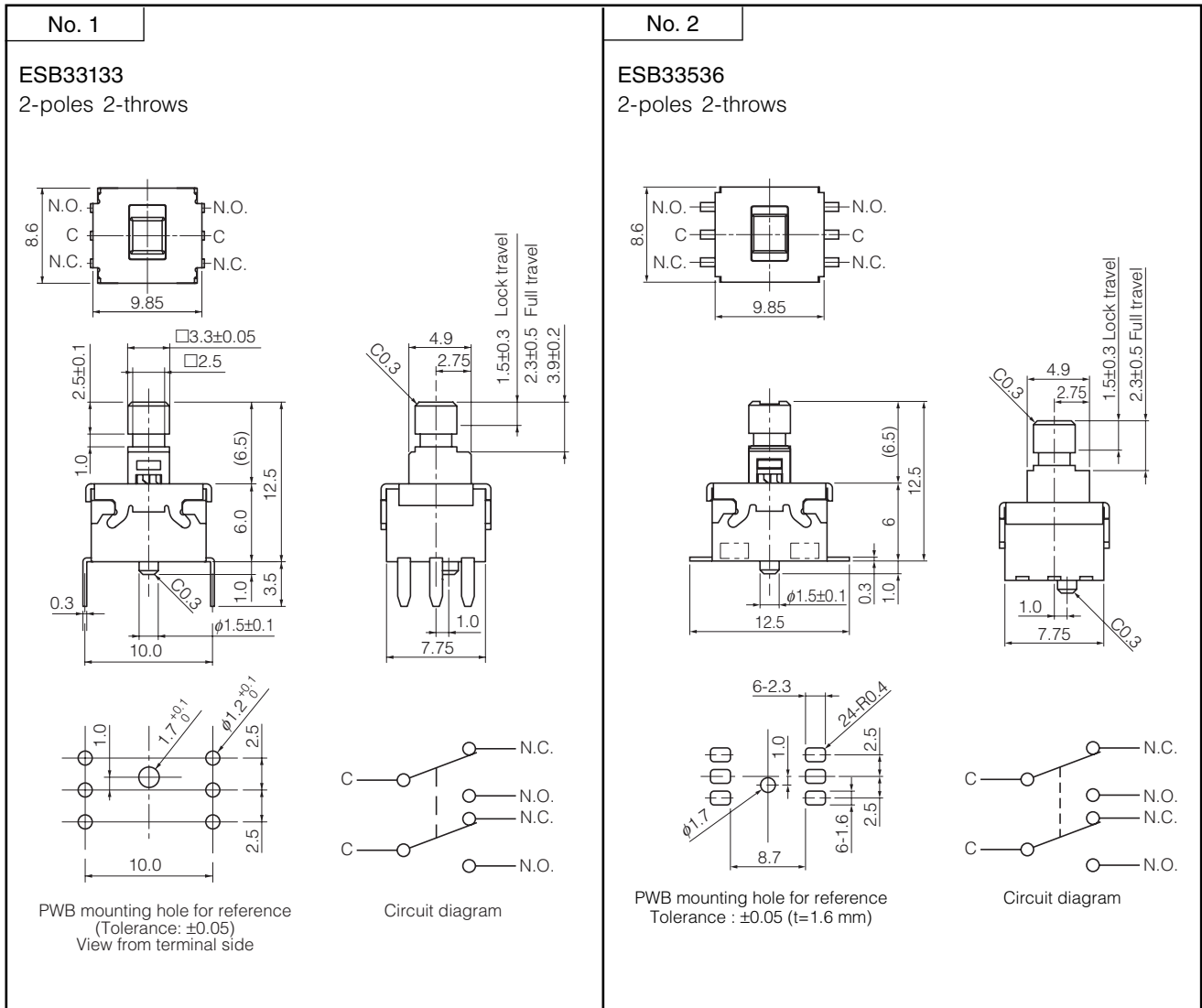
■ Standard Products

| Operating Mode | Terminals | Packaging | Operating Force | Part Numbers | Lever Color |
|----------------|----------------|-------------------------|-------------------|--------------|--------------|
| PP | Wave Soldering | Polyethylene Bag (Bulk) | 3.0 N \pm 1.0 N | ESB33133 | Light Yellow |
| NL | | | | ESB33134 | |
| PP | Surface Mount | Embossed Taping (Reel) | 3.0 N \pm 1.0 N | ESB33535 | Light Yellow |
| NL | | | | ESB33536 | |

Note: PP=Self-lock NL=Non-lock

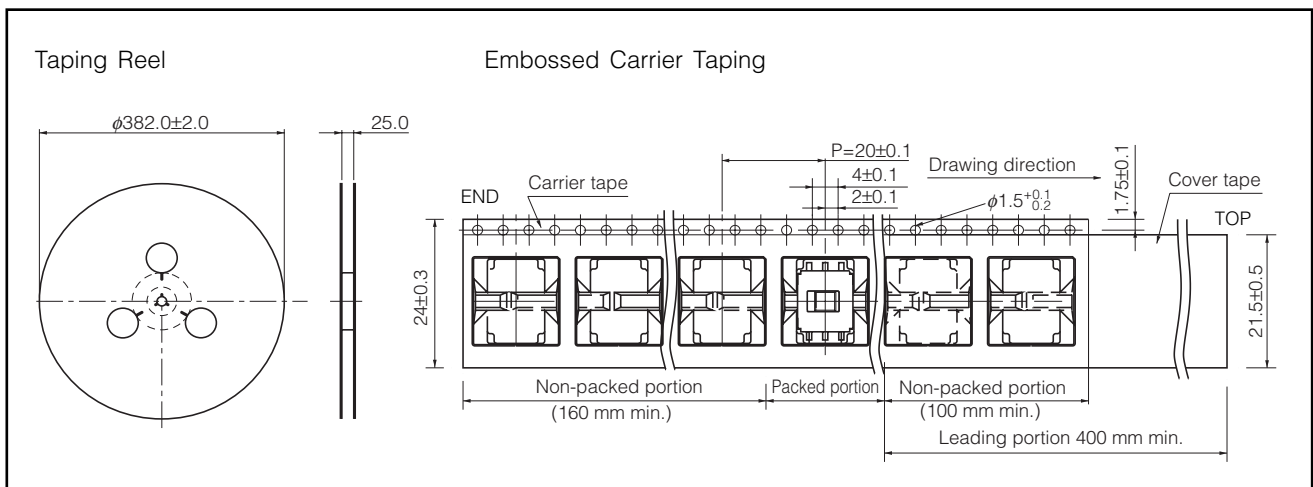
Design and specifications are each subject to change without notice. Ask factory for the current technical specifications before purchase and/or use. Should a safety concern arise regarding this product, please be sure to contact us immediately.

■ Dimensions in mm (not to scale)



■ Packaging Specifications

Standard Reel Dimensions in mm (not to scale)



■ Application Notes:

- Operating force should be applied at the center of the lever.

Design and specifications are each subject to change without notice. Ask factory for the current technical specifications before purchase and/or use. Should a safety concern arise regarding this product, please be sure to contact us immediately.