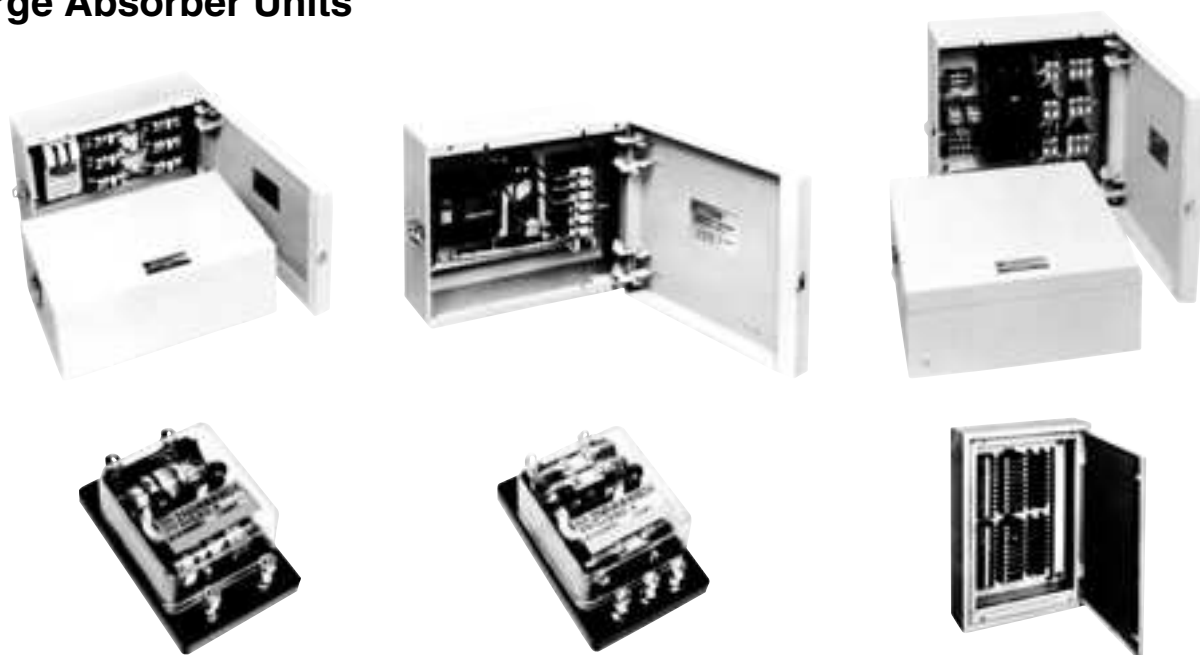


“ZNR” Surge Absorber Units



The Surge Absorber Unit contains Y, Δ or π connected ZNRs surge absorbers (and, if necessary, a circuit breaker) in a box.

These Surge Absorber Units are designed for surge protection of industrial electric equipment where reliability is essential.

- RoHS compliant

■ Recommended Applications

Surge Protection of

- Railway/traffic signal control systems
- Distribution line control systems
- Broadcasting systems, communication systems
- Measuring instruments
- Controllers of low voltage distribution line
- Controllers of waterworks
- RoHS compliant

■ Minimum Quantity / Packing Unit

Please see Related Information

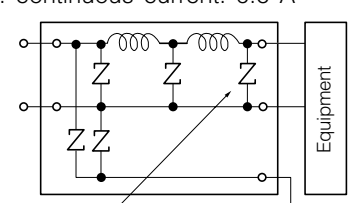
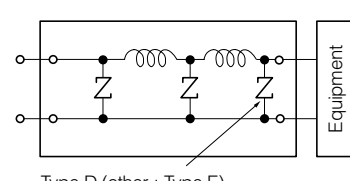
Note: Ask our factory for Product Specification before use.

■ ZNR Surge Absorber Units

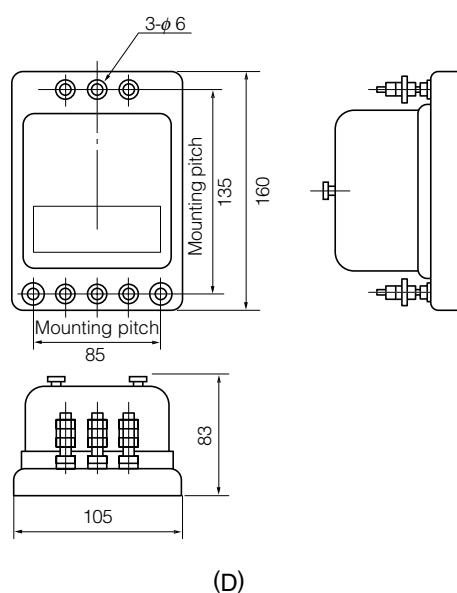
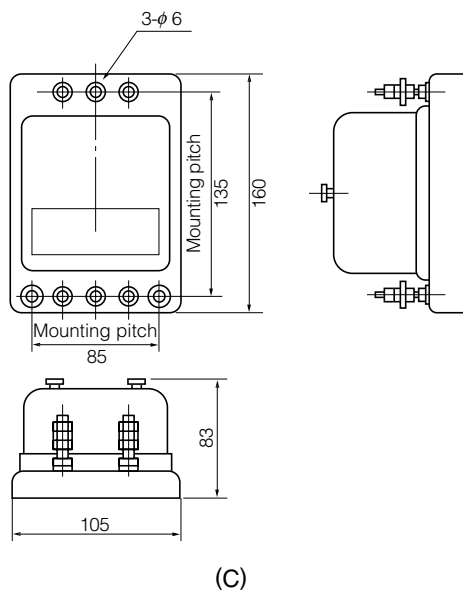
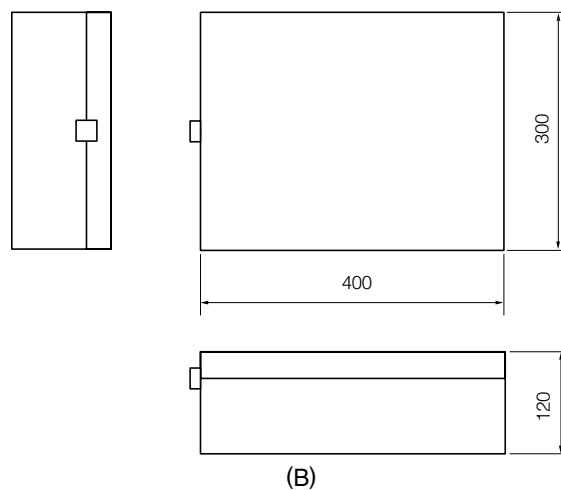
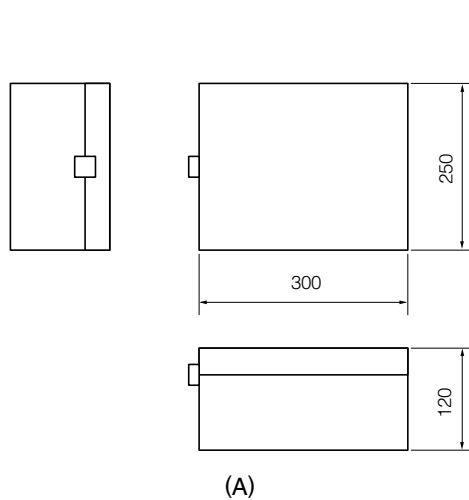
Application	Maximum Peak Current	Rated Voltage	Circuits							
			Single-phase two-wire system		Single-phase three-wire system		Three-phase three-wire system		Three-phase four-wire system	
			Part No.	Dim. Connection	Part No.	Dim. Connection	Part No.	Dim. Connection	Part No.	Dim. Connection
For Power Source	5000 A	AC 100/120 V	ERZA1P251ASA	A 1	ERZA2P251ASA	B 2			ERZA4P251ASA	B 4
			ERZA1P251BC*	C 5						
			ERZA1P251AR**	C 6						
		AC 200/220/240 V	ERZA1P501AS	A 1	ERZA2P501AS	B 2	ERZA3P501AS	B 3	ERZA4P501AS	B 4
			ERZA1P102AS	B 1			ERZA3P102AS	B 3	ERZA4P102AS	B 4
		AC 400/440 V								
	20000 A	AC 100/120 V	ERZA1E271ASA	A 7	ERZA2E271AS	B 8			ERZA4E271AS	B 10
			ERZA1E471ASA	A 7	ERZA2E471AS	B 8	ERZA3E471AS	B 9	ERZA4E471AS	B 10
		AC 200/220/240 V								
			ERZA1E102AS	B 7			ERZA3E102AS	B 9	ERZA4E102AS	B 10
		AC 400/440 V								
	50000 A	AC 100/120 V	ERZA1E271BS	B 7	ERZA2E271BS	B 8			ERZA4E271BS	B 10
			ERZA1E471BS	B 7	ERZA2E471BS	B 8	ERZA3E471BS	B 9	ERZA4E471BS	B 10
		AC 200/220/240 V								
		AC 400/440 V								

* π connection with inductors (specified current: 2 A)

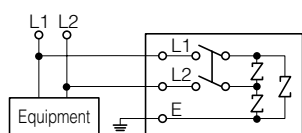
** π connection with resistors (specified current: 2 A)

Application	Maximum Peak Current	Rated Voltage	Part No.	Dimensions	Connection
For signal system (Line to Line and Line to Ground use)	5000 A	DC 12 V	ERZA5F220AC	D	Coil: 1 mH max. Max. continuous current: 0.6 A  Type D (other : Type E)
		DC 24 V	ERZA5F390AC		
		DC 48 V	ERZA5F680AC		
		DC 80 V	ERZA5F101AC		
		DC 100 V	ERZA5F201ACA		
For signal system (Line to Line use only)	5000 A	DC 12 V	ERZA5F220BC	C	Coil: 1 mH max. Max. continuous current: 0.6 A  Type D (other : Type E)
		DC 24 V	ERZA5F390BC		
		DC 48 V	ERZA5F680BC		
		DC 80 V	ERZA5F101BC		
		DC 100 V	ERZA5F201BC		

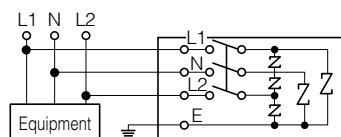
■ Dimensions in mm (not to scale)



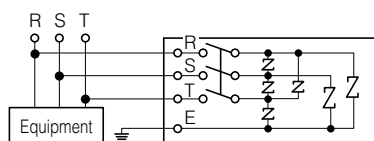
■ Circuit Diagrams



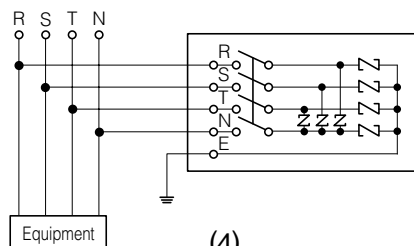
(1)



(2)

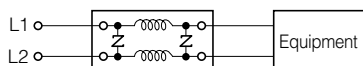


(3)



(4)

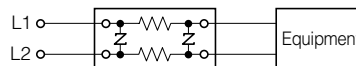
Inductance : 1 mH max.



Max. continuous current : 2 A

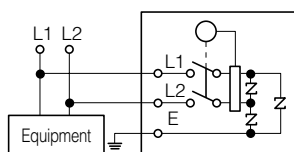
(5)

Resistance : 0.3 Ω

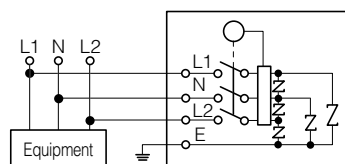


Max. continuous current : 2 A

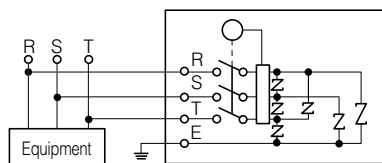
(6)



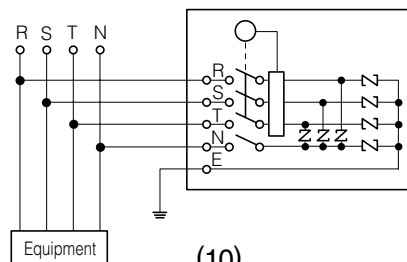
(7)



(8)



(9)



(10)